

# JUSTICE

**VOTE 08**  
**DEPARTMENT OF JUSTICE**

**MINISTER**

**Hon. J. Edzerza**

**DEPUTY MINISTER**

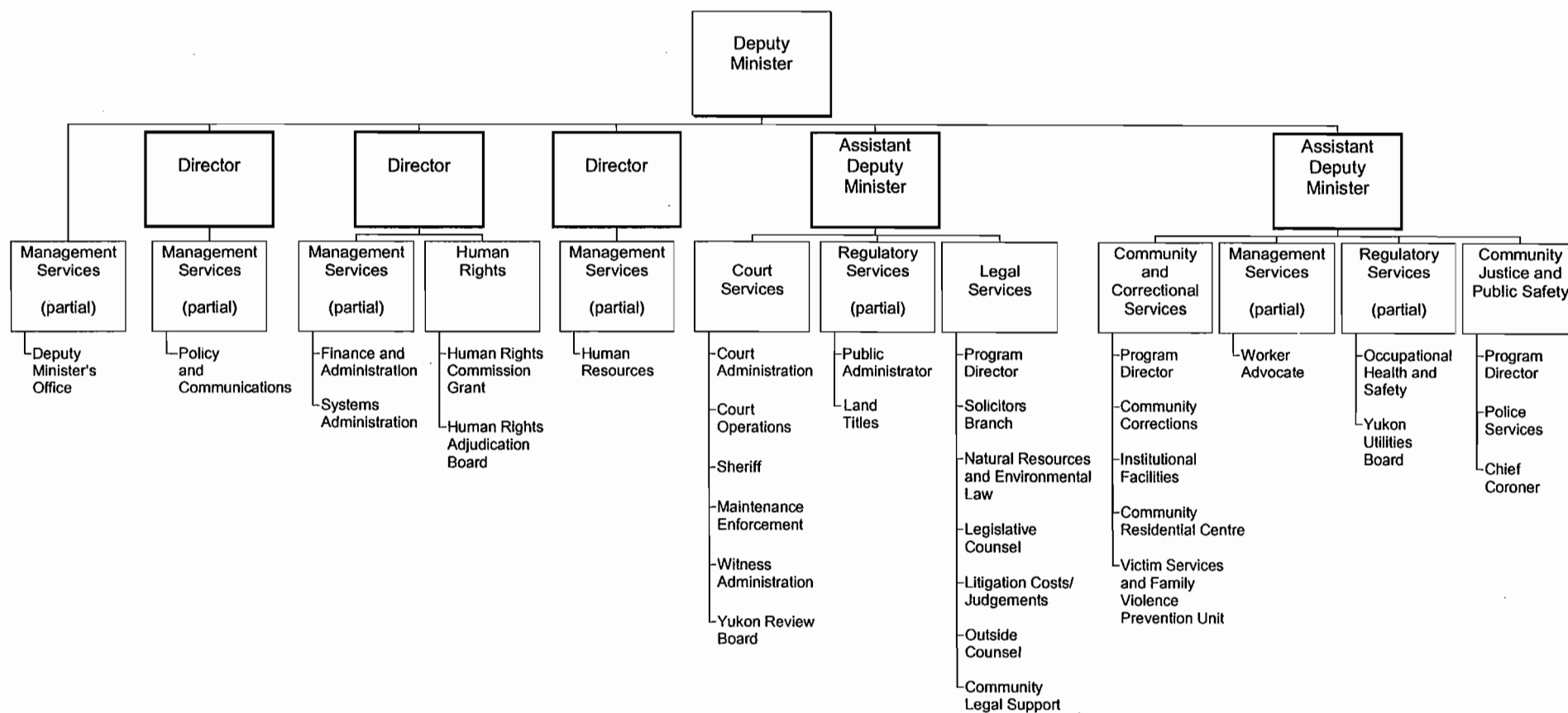
**D. Cooley**

**DEPARTMENTAL OBJECTIVE**

- The Yukon Department of Justice operates to:
  - enhance public confidence in, and respect for, the law and society;
  - promote an open and accessible system of justice that provides fair and equal services to all Yukon citizens;
  - ensure that the administration of justice operates for the benefit of all persons in Yukon;
  - work toward an effective and responsive correctional system to manage offenders in ways that promote rehabilitation and ensure public safety;
  - ensure that the Government of Yukon receives high quality and cost-effective legal services;
  - promote effective policing, crime prevention and community justice initiatives in our communities; and
  - encourage respect for individual, collective and human rights.

# DEPARTMENT OF JUSTICE

## RELATIONSHIP BETWEEN ORGANIZATION AND PROGRAMS



Note: Dark outlined boxes represent positions reporting directly to the Deputy Minister. Other boxes represent programs. Activities/elements are listed below the programs. Programs identified as "partial" represent responsibility for the program being shared by two or more positions reporting directly to the Deputy Minister.

**VOTE 08**  
**DEPARTMENT OF JUSTICE**

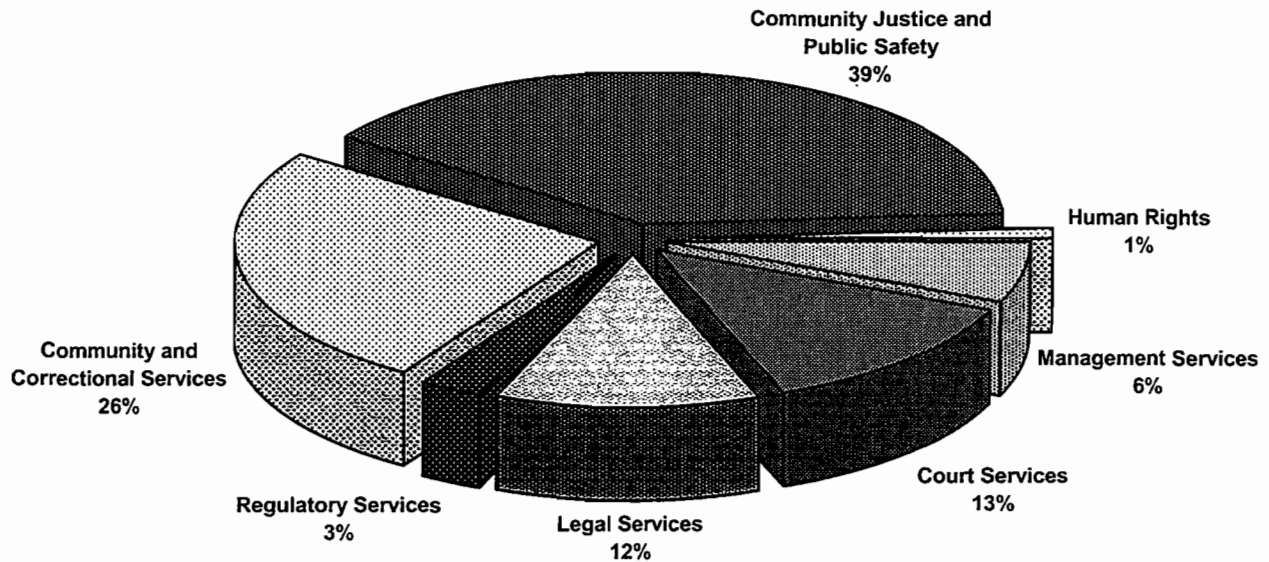
<b>FINANCIAL SUMMARY (\$000s)</b>	<b>2006-07 ESTIMATE</b>	<b>2005-06 FORECAST</b>	<b>% CHANGE</b>	<b>2004-05 ACTUAL</b>
<b>Operation and Maintenance Expenditures</b>				
Management Services	2,514	2,461	2%	2,275
Court Services	5,112	5,106	0%	4,720
Legal Services	4,663	4,734	-1%	4,374
Regulatory Services	1,177	1,203	-2%	1,653
Community and Correctional Services	10,232	9,879	4%	9,242
Community Justice and Public Safety	15,442	15,633	-1%	14,572
Human Rights	489	489	0%	531
<b>Total Operation and Maintenance Vote 08</b>	<b>39,629</b>	<b>39,505</b>	<b>0%</b>	<b>37,367</b>
<b>Amortization Expense</b>	<b>735</b>	<b>573</b>	<b>28%</b>	<b>563</b>
<b>Revenues</b>				
Taxes and General Revenues	608	608	0%	658
Third-Party Recoveries	516	507	2%	469
Recoveries from Canada	1,519	1,826	-17%	1,776
<b>Total Revenues</b>	<b>2,643</b>	<b>2,941</b>	<b>-10%</b>	<b>2,903</b>
<b>Allotments</b>				
Personnel	17,559	17,260	2%	15,642
Other	18,261	18,429	-1%	17,091
Transfer Payments	3,809	3,816	0%	4,634
<b>Total Allotments</b>	<b>39,629</b>	<b>39,505</b>	<b>0%</b>	<b>37,367</b>

Note:

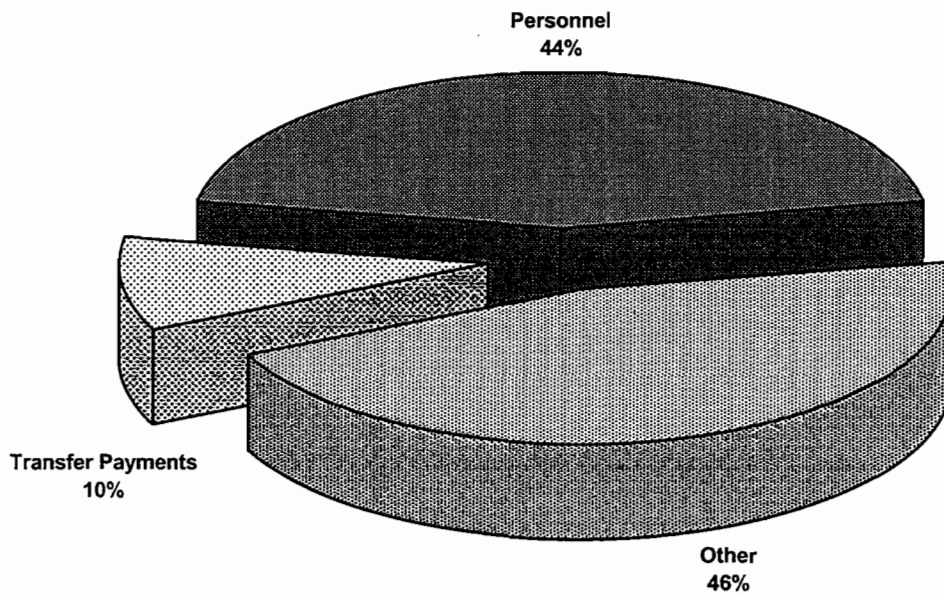
Restated 2005-06 Forecast and 2004-05 Actual to be consistent with the 2006-07 Estimate presentation.

**VOTE 08**  
**DEPARTMENT OF JUSTICE**

**2006-07 Estimate**  
**Distribution of O&M Expenditures by Program**



**2006-07 Estimate**  
**Distribution of O&M Expenditures by Allotment**



## JUSTICE

## MANAGEMENT SERVICES

### PROGRAM OBJECTIVES

- To assist and support appropriate and consistent departmental policy and program delivery through the provision of planning, analysis, information and communications, as well as financial, human and physical resource management to program branches.
- To maintain and support a worker advocate program that assists injured workers.

O&M EXPENDITURES (\$000s)	2006-07 ESTIMATE	2005-06 FORECAST	% CHANGE	2004-05 ACTUAL
<b>Activity</b>				
Management Services	2,514	2,461	2%	2,275
<b>Total Management Services</b>	2,514	2,461	2%	2,275
<b>Allotments</b>				
Personnel	2,116	2,063	3%	1,907
Other	398	398	0%	368
Transfer Payments	0	0	0%	0
<b>Total Allotments</b>	2,514	2,461	2%	2,275

## JUSTICE

## COURT SERVICES

### PROGRAM OBJECTIVES

- To enhance and facilitate the integrity and efficient operation of the court system through the provision of administrative, enforcement and support services to the courts, the judiciary and other participants in judicial processes.
- To enforce court orders to ensure that child maintenance payments are received and support payments are issued.
- To enforce court orders, provide jury management, serve civil and criminal documents, and provide security for courts, the public, judiciary and court services staff.

O&M EXPENDITURES (\$000s)	2006-07 ESTIMATE	2005-06 FORECAST	% CHANGE	2004-05 ACTUAL
<b>Activities</b>				
Court Administration	715	758	-6%	620
Court Operations	3,464	3,481	0%	3,305
Sheriff	277	266	4%	230
Maintenance Enforcement	483	442	9%	463
Witness Administration	135	122	11%	70
Yukon Review Board	38	37	3%	32
<b>Total Court Services</b>	<b>5,112</b>	<b>5,106</b>	<b>0%</b>	<b>4,720</b>
<b>Allotments</b>				
Personnel	3,815	3,812	0%	3,263
Other	1,297	1,294	0%	1,457
Transfer Payments	0	0	0%	0
<b>Total Allotments</b>	<b>5,112</b>	<b>5,106</b>	<b>0%</b>	<b>4,720</b>

# JUSTICE

## COURT SERVICES

### STATISTICS

	2006-07 ESTIMATE	2005-06 FORECAST	% CHANGE	2004-05 ACTUAL
<b>Supreme Court</b>				
Civil Files Opened (#)	500	500	0%	511
Civil Documents Filed (#)	7,000	7,000	0%	6,843
Summary Conviction Appeals (#)	10	10	0%	10
<b>Court of Appeal</b>				
Files Opened (#)	25	25	0%	15
Appeal Documents Filed (#)	350	350	0%	156
<b>Federal Court of Canada Files</b>				
Files Opened (#)	10	8	25%	9
Federal Documents Filed (#)	60	50	20%	58
<b>Territorial Court</b>				
Civil Files Opened (#)	150	150	0%	145
Civil Documents Filed (#)	1,700	1,700	0%	1,426
Adult Charges Laid (#)	3,500	3,500	0%	2,965
Young Offender Charges Laid (#)	350	300	17%	326
S.C.O.T.* Tickets (Adult and Youth)	4,500	4,500	0%	3,299
Territorial Applications	80	80	0%	51
<b>Small Claims Court</b>				
Files Opened (#)	225	225	0%	203
Documents Filed (#)	2,400	2,400	0%	2,296
<b>Witness Administration</b>				
Witnesses (#)	600	600	0%	639
<b>Maintenance Enforcement Program</b>				
Files Opened (#)	90	90	0%	115
Files Active (#)	600	610	-2%	603
<b>Sheriff</b>				
Documents Served (#)	450	450	0%	410
Seizures of Goods and Chattels (#)	65	80	-19%	45
Judge and Jury Trials (#)	8	10	-20%	6
Jurors Served (#)	3,500	3,000	17%	3,000

\* Summary Conviction Ordinance Tickets.



## JUSTICE

## LEGAL SERVICES

### PROGRAM OBJECTIVES

- To ensure that the Minister of Justice and Cabinet receive timely and effective legal advice.
- To ensure that a comprehensive range of legal services is provided to government departments, including representation before all courts and tribunals in civil and criminal matters, legislative drafting in both official languages and advice on a wide variety of matters.
- To provide community legal support through funding to the Yukon Legal Services Society, the Aboriginal Courtworker Program and the Yukon Public Legal Education Association.

<b>O&amp;M EXPENDITURES (\$000s)</b>	<b>2006-07 ESTIMATE</b>	<b>2005-06 FORECAST</b>	<b>% CHANGE</b>	<b>2004-05 ACTUAL</b>
<b>Activities</b>				
Program Director	254	252	1%	227
Solicitors Branch	1,430	1,416	1%	1,220
Natural Resources and Environmental Law	328	305	8%	282
Legislative Counsel	553	663	-17%	541
Litigation Costs/Judgements	6	6	0%	2
Outside Counsel	94	94	0%	55
Community Legal Support	1,998	1,998	0%	2,047
<b>Total Legal Services</b>	<b>4,663</b>	<b>4,734</b>	<b>-1%</b>	<b>4,374</b>
<b>Allotments</b>				
Personnel	2,430	2,501	-3%	2,137
Other	235	235	0%	190
Transfer Payments	1,998	1,998	0%	2,047
<b>Total Allotments</b>	<b>4,663</b>	<b>4,734</b>	<b>-1%</b>	<b>4,374</b>

## JUSTICE

## REGULATORY SERVICES

### PROGRAM OBJECTIVES

- To administer estates of Yukoners who die where a legal representative has not assumed responsibility; to act as trustee of the estates of minor children, mentally incompetent persons, and missing persons; and to protect the rights and interests of minor children.
- To serve as the court-appointed guardian for incapable adults, where there is no-one else able to do so, and investigate allegations of financial abuse of vulnerable adults.
- To administer a land titles system within Yukon.
- To provide funds for the operation of the Yukon Utilities Board as provided for in the *Public Utilities Act*.

O&M EXPENDITURES (\$000s)	2006-07 ESTIMATE	2005-06 FORECAST	% CHANGE	2004-05 ACTUAL
<b>Activities</b>				
Occupational Health and Safety	330	330	0%	858
Public Administrator	268	319	-16%	267
Land Titles	399	362	10%	409
Yukon Utilities Board	180	192	-6%	119
<b>Total Regulatory Services</b>	<b>1,177</b>	<b>1,203</b>	<b>-2%</b>	<b>1,653</b>
<b>Allotments</b>				
Personnel	603	602	0%	578
Other	144	159	-9%	129
Transfer Payments	430	442	-3%	946
<b>Total Allotments</b>	<b>1,177</b>	<b>1,203</b>	<b>-2%</b>	<b>1,653</b>

## JUSTICE

### REGULATORY SERVICES Public Administrator

## STATISTICS

- To protect the assets of estates on behalf of beneficiaries, minors, and mentally incapacitated persons.
- To protect the personal and property interests of minor children.

	2006-07 ESTIMATE	2005-06 FORECAST	% CHANGE	2004-05 ACTUAL
Missing Persons (#)	1	1	0%	1
Minor Children (#)	26	26	0%	24
Estate Files Opened in Period (#)	10	10	0%	44
Total Estate Files Open (#)*	100	120	-17%	174
Official Guardian Files (#)	75	75	0%	90
Private Guardianship Applications (#)	15	10	50%	0
PGT Guardianship Applications (#)	15	10	50%	0
Financial Abuse (#)	20	15	33%	0
Temporary Guardianship (#)	5	5	0%	0
Statutory Guardianship (#)	5	5	0%	0
Public Administrator Estate Fees (\$) **	-	-	n/a	9,297
Public Guardian and Trustee Fees (\$) **	25,000	20,000	25%	-
<b>Funds in Trust at March 31, 2005</b>				
Savings (\$)	865,237			
Guaranteed Investment Certificates (\$)	251,560			

\* Total Minor Children included in Total Estate Files Open.

\*\* Public Administrator Fees are no longer taken on Estate files, these fees are now reported as Public Guardian and Trustee Fees due to the new legislation.

## JUSTICE

### REGULATORY SERVICES Land Titles

#### STATISTICS

- To provide a guaranteed, accurate title of land and any interests registered against it under the Torrens System of Land.
- To ensure the integrity of the titles, all documents and survey plans are examined and registered in the Land Titles Office.

	2006-07 ESTIMATE	2005-06 FORECAST	% CHANGE	2004-05 ACTUAL
Land Titles Registered (#)	1,600	1,500	7%	1,342
Condominium Titles Registered (#)	300	250	20%	160
Road Titles Registered (#)	15	15	0%	19
Survey Plans Registered - Land (#)	150	140	7%	223
Survey Plans Registered - Condominium (#)	20	15	33%	5
Transfers Registered (#) *	1,700	1,600	6%	1,440
Mortgages Registered (#)	1,600	1,500	7%	1,313
Caveats Registered (#)	150	140	7%	140
Misc. Documents Registered (#) **	2,500	2,000	25%	1,927
Total Documents Registered (#)	8,035	7,160	12%	6,569
Parcel Files Created (#)	350	300	17%	396
Condominium Files Created (#)	200	150	33%	26
Certificates of Search (#) ***	6,600	6,500	2%	6,197
General Registry Certificates (#)	1,700	1,600	6%	1,460
Photocopies (#) ****	47,000	46,000	2%	44,300

\* One Transfer Document may create several Certificates of Title, such as Enlargements.

\*\* Discharges, Name Changes, Writs of Seizure and Sale, Power of Attorney, etc.

\*\*\* Certified True Copies of Certificates of Title.

\*\*\*\* Certificates of Title, Instruments, Historical Searches, Survey Parcels, etc.

## JUSTICE

### COMMUNITY AND CORRECTIONAL SERVICES

#### PROGRAM OBJECTIVES

- To contribute to the protection of society and the health of communities and individuals by providing community and institutional based opportunities for healing and reparation.
- To provide programs and services for offenders that have as their primary goal the safe integration into communities as law-abiding citizens.
- To support victims and provide programs and services for preventing and responding to family violence.

O&M EXPENDITURES (\$000s)	2006-07 ESTIMATE	2005-06 FORECAST	% CHANGE	2004-05 ACTUAL
<b>Activities</b>				
Program Director	293	275	7%	196
Community Corrections	1,300	1,257	3%	1,057
Institutional Facilities	6,706	6,494	3%	6,211
Community Residential Centre	450	450	0%	411
Victim Services and Family Violence Prevention Unit	1,483	1,403	6%	1,367
<b>Total Community and Correctional Services</b>	<b>10,232</b>	<b>9,879</b>	<b>4%</b>	<b>9,242</b>
<b>Allotments</b>				
Personnel	7,918	7,625	4%	7,037
Other	1,864	1,804	3%	1,550
Transfer Payments	450	450	0%	655
<b>Total Allotments</b>	<b>10,232</b>	<b>9,879</b>	<b>4%</b>	<b>9,242</b>

## JUSTICE

### COMMUNITY AND CORRECTIONAL SERVICES Community Corrections

#### STATISTICS

- Community Corrections administers community based corrections programs. These programs enable the courts to consider a range of alternatives to imprisonment in the sentencing process. They are designed primarily for low risk offenders who present minimal danger to the public at the time of sentencing, or for offenders for whom it has been determined risk can be managed in a community setting.

	2006-07 ESTIMATE	2005-06 FORECAST	% CHANGE	2004-05 ACTUAL
<b>Probation</b>				
Average Offender Count (#) *	420	410	2%	413
New Admissions (#)	550	600	-8%	462
Pre-Sentence Reports (#) **	450	425	6%	439
Fine Option Program (#)	15	15	0%	23
Conditional Sentences (#)	95	85	12%	76

\* Based on average monthly counts.

\*\* Includes both Pre-Sentence and Bail Supervision Reports.

## JUSTICE

### COMMUNITY AND CORRECTIONAL SERVICES Institutional Facilities Whitehorse Correctional Centre

#### STATISTICS

- The Whitehorse Correctional Centre is a medium security correctional facility for adult men and women. The centre accommodates inmates serving sentences of less than two years.

	2006-07 ESTIMATE	2005-06 FORECAST	% CHANGE	2004-05 ACTUAL
<b>Yukon Adults Average Daily Inmate Cost</b>				
Daily Costs (\$)	300	316	-5%	264
Total Days Stay (#)	21,900	20,440	7%	22,748
<b>Average Offenders on Register and Actual, by Inmate Status</b>				
On Register (#)	60	56	7%	62
Sentenced (#)	28	26	8%	30
Remand (#)	32	30	7%	32
<b>Total Admissions</b>				
Sentenced Admissions (#)	200	190	5%	188
Remand Admissions (#)	320	320	0%	373

## JUSTICE

### COMMUNITY AND CORRECTIONAL SERVICES Victim Services and Family Violence Prevention Unit Spousal Abuse Program

#### STATISTICS

- Individual and group counselling and support services are provided for perpetrators of spousal abuse. Men and women undergo an assessment process and are then provided services as outlined in the case plan and assessment.
- The program is a court driven treatment program, therefore the numbers are directly influenced by disclosures, charges and sentencing practices.

	2006-07 ESTIMATE	2005-06 FORECAST	% CHANGE	2004-05 ACTUAL
New male clients	110	110	0%	108
Male client carry over	90	95	-5%	79
<b>Total</b>	<b>200</b>	<b>205</b>	<b>-2%</b>	<b>187</b>
New Female clients	30	37	-19%	28
Female client carry over	30	21	43%	23
<b>Total</b>	<b>60</b>	<b>58</b>	<b>3%</b>	<b>51</b>
Community Assessments (#)	100	114	-12%	89
Number of men's group sessions	236	236	0%	236
Number of women's group sessions	82	54	52%	41
Court or Parole Referrals (#)	200	200	0%	190
Partners assessed (#)	60	60	0%	59
Training to Other Service Providers - in hours (#)	420 hrs	420 hrs	0%	420 hrs

#### 2004-05 Assessments by Community

Atlin, B. C.	3
Beaver Creek	0
Burwash	0
Carcross	7
Carmacks	2
Dawson City	10
Good Hope, B.C.	0
Haines Junction	0
Faro	6
Mayo	5
Old Crow	3
Pelly/Stewart	6
Ross River	9
Teslin	2
Watson Lake	36
<b>Total</b>	<b>89</b>

#### Notes:

- 1) Recently the Women and Violence Program has expanded up to the Whitehorse Correctional Facility.
- 2) The increase in numbers of women attending programming is partially due to an increase in RCMP laying mutual assault charges in regards to domestic violence.
- 3) Increasingly, staff are presenting to various community groups and offering training in regards to developing healthier communities and supporting resources.
- 4) The Spousal Assault Program has increased program length by two weeks to accommodate a concise psycho-educational component into the program.



## JUSTICE

### COMMUNITY AND CORRECTIONAL SERVICES Victim Services and Family Violence Prevention Unit Victims Program

#### STATISTICS

- Programs provided for victims include: the Support Group for Women in abusive relationships, Drop-In Support Group, individual counselling for victims of spousal abuse, advocacy and support services, and case management with the Spousal Abuse Program.

	2006-07 ESTIMATE	2005-06 FORECAST	% CHANGE	2004-05 ACTUAL
<b>Total Women</b>				
Clients (#)	150	150	0%	146
<b>Status</b>				
Spousal Assault (#)	140	140	0%	130
<b>Service</b>				
Individual Counselling (#)	150	150	0%	146
Court Support (#)*	15	15	0%	10
Specialized Group (#) *	3	3	0%	1
Support Group (#)	40	40	0%	34
<b>Community</b>				
Whitehorse (#)	140	140	0%	116
Other Communities (#)	35	35	0%	30
Workshop/Presentations (#)	18	18	0%	15
(Teen Parent Centre, College, Communities)				

- \* Co-facilitating groups with other non-government agencies, the Child Abuse Treatment Centre (CATC) and Whole Life Child Project.

## JUSTICE

### COMMUNITY AND CORRECTIONAL SERVICES Victim Services and Family Violence Prevention Unit Sexual Offender Risk Management Program

## STATISTICS

- The Sexual Offender Risk Management Program is a comprehensive approach to treating and monitoring sexual offenders in the Yukon Territory. It combines cognitive behavioural treatment with a monitoring and supervision component in order to minimize the risk of re-offence. Group treatment is the preferred treatment modality as it shows the best promise for reducing recidivism. Individual counseling is available in some circumstances and in accordance with a psychological and risk assessment and an overall case plan.

	2006-07 ESTIMATE	2005-06 FORECAST	% CHANGE	2004-05 ACTUAL
New Male clients (#)	20	20	0%	14
Carry Forward Male clients (#)	25	31	-19%	18
Total	45	51	-12%	32
Community Assessments (#) *	10	10	0%	7
Community Visits (#) **	25	25	0%	15
Number of Group Sessions (#) ***	96	96	0%	62

### 2004-05 Assessments by Community

Atlin, B. C.	1
Burwash	0
Carcross/Tagish	1
Carmacks	0
Dawson City	1
Haines Junction	0
Mayo	0
Old Crow	1
Pelly/Stewart	1
Ross River	0
Teslin	1
Watson Lake	1
<b>Total</b>	<b>7</b>

\* All assessments are court driven.

\*\* Community visits are dependent on either invitation by community or if there is a convicted sex offender residing in the community.

\*\*\* An additional group for cognitively delayed individuals has been added to the program. Currently, eleven clients served by the SORMP have diagnosed cognitive delays. Service is provided through regular individual session, risk management meetings, and three attend a specialized group designed to meet the needs of individuals with cognitive delays.

## JUSTICE

### COMMUNITY AND CORRECTIONAL SERVICES Victim Services and Family Violence Prevention Unit Victim Services

#### STATISTICS

- In cooperation with the R.C.M.P., the program offers services to ensure victimized persons in the Yukon receive support, information, advocacy, and appropriate referral to specialized agencies in order to limit the effect of their crisis and return their life to a desired degree of stability.

	2006-07 ESTIMATE	2005-06 FORECAST	% CHANGE	2004-05 ACTUAL
<b>File Profile (#)</b>				
Case Files Opened	280	280	0%	247
Files Carried Over	163	163	0%	169
Active Parole Files	12	12	0%	11
Short Service Contracts	200	200	0%	142
Total Number of Files Opened	655	655	0%	569
<b>Client Profile (#)</b>				
Total Number of Clients Served	860	860	0%	853
Female	77%	77%	n/a	77%
Male	23%	23%	n/a	23%
First Nations	59%	59%	n/a	59%
Non-First Nations	41%	41%	n/a	41%
<b>Case Profile (%)</b>				
Homicides	1%	1%	n/a	1%
Assaults (All levels)	65%	65%	n/a	60%
Sexual Assaults	18%	18%	n/a	22%
Peace Bonds	3%	3%	n/a	5%
Property	3%	3%	n/a	2%
Other (death notifications, vehicle accidents, miscellaneous)	10%	10%	n/a	10%
Total Spousal Related	80%	80%	n/a	77%
<b>Community Outreach (#)</b>				
Whitehorse Files	400	400	0%	352
Watson Lake (Sub Office)	80	80	0%	63
Dawson City	70	70	0%	60
Other Yukon Community Files	100	100	0%	94
Outside Yukon Files	5	5	0%	0

## JUSTICE

### COMMUNITY JUSTICE AND PUBLIC SAFETY

#### PROGRAM OBJECTIVES

- To promote public awareness, safety and respect for the law through effective policing and community justice initiatives, and to promote safer communities and improve the quality of life in Yukon.
- To investigate all sudden and unnatural deaths in order to clarify the facts, focus attention on preventable deaths and protect public health and safety.

O&M EXPENDITURES (\$000s)	2006-07 ESTIMATE	2005-06 FORECAST	% CHANGE	2004-05 ACTUAL
<b>Activities</b>				
Program Director	1,132	1,246	-9%	1,170
Police Services	14,048	14,129	-1%	13,203
Chief Coroner	262	258	2%	199
<b>Total Community Justice and Public Safety</b>	<b>15,442</b>	<b>15,633</b>	<b>-1%</b>	<b>14,572</b>
<b>Allotments</b>				
Personnel	677	657	3%	720
Other	14,285	14,501	-1%	13,377
Transfer Payments	480	475	1%	475
<b>Total Allotments</b>	<b>15,442</b>	<b>15,633</b>	<b>-1%</b>	<b>14,572</b>

## JUSTICE

### COMMUNITY JUSTICE AND PUBLIC SAFETY Police Services

#### STATISTICS

- The Royal Canadian Mounted Police (R.C.M.P.) in the Yukon ("M" Division) provides cost-shared territorial policing services to all areas and peoples of the Yukon under an agreement signed by the Solicitor General of Canada, the Commissioner of the Yukon and the Yukon Minister of Justice.
- Currently there are 176 Full Time Equivalent (FTEs) employed in Yukon ("M" Division), consisting of 121 regular R.C.M.P. members, 4 special constables, 18 civilian members, and 33 employees in the public sector. These totals include Division Headquarters staff located in Whitehorse who provide enforcement of federal statutes, executive orders and protective policing services, and Divisional administrative services.

	2005 FORECAST	2004 ACTUAL	2003 ACTUAL
<b>Criminal Code Offenders (#) *</b>			
Crimes Against Persons	1,222	1,315	1,180
Crimes Against Property	3,841	3,606	2,305
Other Criminal Code Offences	2,479	3,114	4,590
	<u>7,542</u>	<u>8,035</u>	<u>8,075</u>

#### Impaired Driving - Incidents (#) \*

- The following figures include driving while impaired, refusing breath/blood tests, refusing roadside screening, driving with more than 80 mgs. of alcohol in blood, impaired driving causing bodily harm, and impaired driving causing death.

Impaired Driving	<u>368</u>	<u>409</u>	<u>263</u>
------------------	------------	------------	------------

\* As reported by the Canadian Centre for Justice statistics. These are the total number of incidents reported to the Royal Canadian Mount Police (R.C.M.P.).

## JUSTICE

### COMMUNITY JUSTICE AND PUBLIC SAFETY Chief Coroner

#### STATISTICS

- To investigate, for the public, unexpected and sudden deaths, and to recommend changes to prevent similar deaths.
- To focus attention on preventable deaths and the public's health and safety.

	2006-07 ESTIMATE	2005-06 FORECAST	% CHANGE	2004-05 ACTUAL
<b>Case Work (#)</b>				
Coroner's Cases	54	55	-2%	44
Autopsies	35	36	-3%	25
Inquests	1	2	-50%	0
Judgements of Inquiry	7	8	-13%	7
<b>Manner of Death (#)</b>				
Natural	30	28	7%	19
Suicide	5	5	0%	3
Homicide	1	1	0%	6
Accident	17	21	-19%	16
Undetermined	1	0	100%	0
Total Coroners' Cases	54	55	-2%	44

## JUSTICE

## HUMAN RIGHTS

### PROGRAM OBJECTIVE

- To provide funds for the operation of the Human Rights Commission and the Panel of Adjudicators as provided for in the *Human Rights Act*.

O&M EXPENDITURES (\$000s)	2006-07 ESTIMATE	2005-06 FORECAST	% CHANGE	2004-05 ACTUAL
<b>Activities</b>				
Human Rights Commission Grant	451	451	0%	511
Human Rights Adjudication Board	38	38	0%	20
<b>Total Human Rights</b>	<b>489</b>	<b>489</b>	<b>0%</b>	<b>531</b>
<b>Allotments</b>				
Personnel	0	0	0%	0
Other	38	38	0%	20
Transfer Payments	451	451	0%	511
<b>Total Allotments</b>	<b>489</b>	<b>489</b>	<b>0%</b>	<b>531</b>

## JUSTICE

REVENUES (\$000s)	2006-07 ESTIMATE	2005-06 FORECAST	% CHANGE	2004-05 ACTUAL
<b>TAXES AND GENERAL REVENUES</b>				
<b>Court Services</b>				
Fines - Territorial Court	400	400	0%	432
Sheriff's Office	20	20	0%	29
<b>Regulatory Services</b>				
Public Administrator Fees	2	2	0%	9
Land Titles Fees	186	186	0%	188
<b>Total Taxes and General Revenues</b>	<b>608</b>	<b>608</b>	<b>0%</b>	<b>658</b>
<b>THIRD-PARTY RECOVERIES</b>				
<b>Management Services</b>				
Worker Advocate	387	381	2%	358
<b>Court Services</b>				
Witness Program - Videoconferencing	4	4	0%	2
<b>Regulatory Services</b>				
Public Utilities Board Hearings	100	112	-11%	88
<b>Community and Correctional Services</b>				
Outreach Worker				
- Province of British Columbia	3	10	-70%	7
Prior Years' Recoveries	0	0	0%	14
<b>Community Justice and Public Safety</b>				
Substance Abuse Coordinator	22	0	100%	0
<b>Total Third-Party Recoveries</b>	<b>516</b>	<b>507</b>	<b>2%</b>	<b>469</b>



## JUSTICE

REVENUES (\$000s)	2006-07 ESTIMATE	2005-06 FORECAST	% CHANGE	2004-05 ACTUAL
<b>RECOVERIES FROM CANADA</b>				
<b>Court Services</b>				
Child Support Guidelines	207	207	0%	167
Family Law Information Centre (FLIC)	40	0	100%	0
Prior Years' Recoveries	0	30	-100%	19
<b>Legal Services</b>				
Legal Aid	864	864	0%	947
Aboriginal Courtworker Program	158	158	0%	158
Yukon Public Legal Education Association (YPLEA)	70	70	0%	70
Prior Years' Recoveries	0	0	0%	11
<b>Community and Correctional Services</b>				
Institutional Facilities	10	10	0%	41
Parole Supervision	70	70	0%	70
Justice Canada				
- Outreach workers	50	50	0%	50
- Counselling for Kids	50	0	100%	0
Prior Years' Recoveries	0	0	0%	35
<b>Community Justice and Public Safety</b>				
Prior Years' Recoveries	0	367	-100%	208
<b>Total Recoveries from Canada</b>	<b>1,519</b>	<b>1,826</b>	<b>-17%</b>	<b>1,776</b>
<b>TOTAL REVENUES</b>	<b>2,643</b>	<b>2,941</b>	<b>-10%</b>	<b>2,903</b>

## JUSTICE

<b>TRANSFER PAYMENTS (\$000s)</b>	<b>2006-07 ESTIMATE</b>	<b>2005-06 FORECAST</b>	<b>% CHANGE</b>	<b>2004-05 ACTUAL</b>
<b>GRANTS</b>				
<b>Regulatory Services</b>				
Yukon Workers' Compensation Health and Safety Board	330	330	0%	858
<b>Community and Correctional Services</b>				
Institutional Facilities Inmate Allowance	50	50	0%	50
<b>Human Rights</b>				
Human Rights Commission *	451	451	0%	511
<b>Total Grants</b>	<b>831</b>	<b>831</b>	<b>0%</b>	<b>1,419</b>
* Paid under Authority of Legislation				
<b>CONTRIBUTIONS</b>				
<b>Legal Services</b>				
Yukon Legal Services Society (Legal Aid)	1,592	1,592	0%	1,593
Aboriginal Courtworker Program	321	321	0%	369
Yukon Public Legal Education Association (YPLEA)	85	85	0%	85
<b>Regulatory Services</b>				
Yukon Utilities Board	100	112	-11%	88
<b>Community and Correctional Services</b>				
Community Residential Centre (Salvation Army)	400	400	0%	405
Prior Years' Contributions	0	0	0%	200
<b>Community Justice and Public Safety</b>				
Youth Leadership Program	168	168	0%	166
Community Justice Projects	307	307	0%	309
Police Board Funding	5	0	100%	0
<b>Total Contributions</b>	<b>2,978</b>	<b>2,985</b>	<b>0%</b>	<b>3,215</b>
<b>TOTAL TRANSFER PAYMENTS</b>	<b>3,809</b>	<b>3,816</b>	<b>0%</b>	<b>4,634</b>