

COMMUNITY SERVICES



VOTE 51

DEPARTMENT OF COMMUNITY SERVICES

MINISTER

Hon. A. Lang

DEPUTY MINISTER

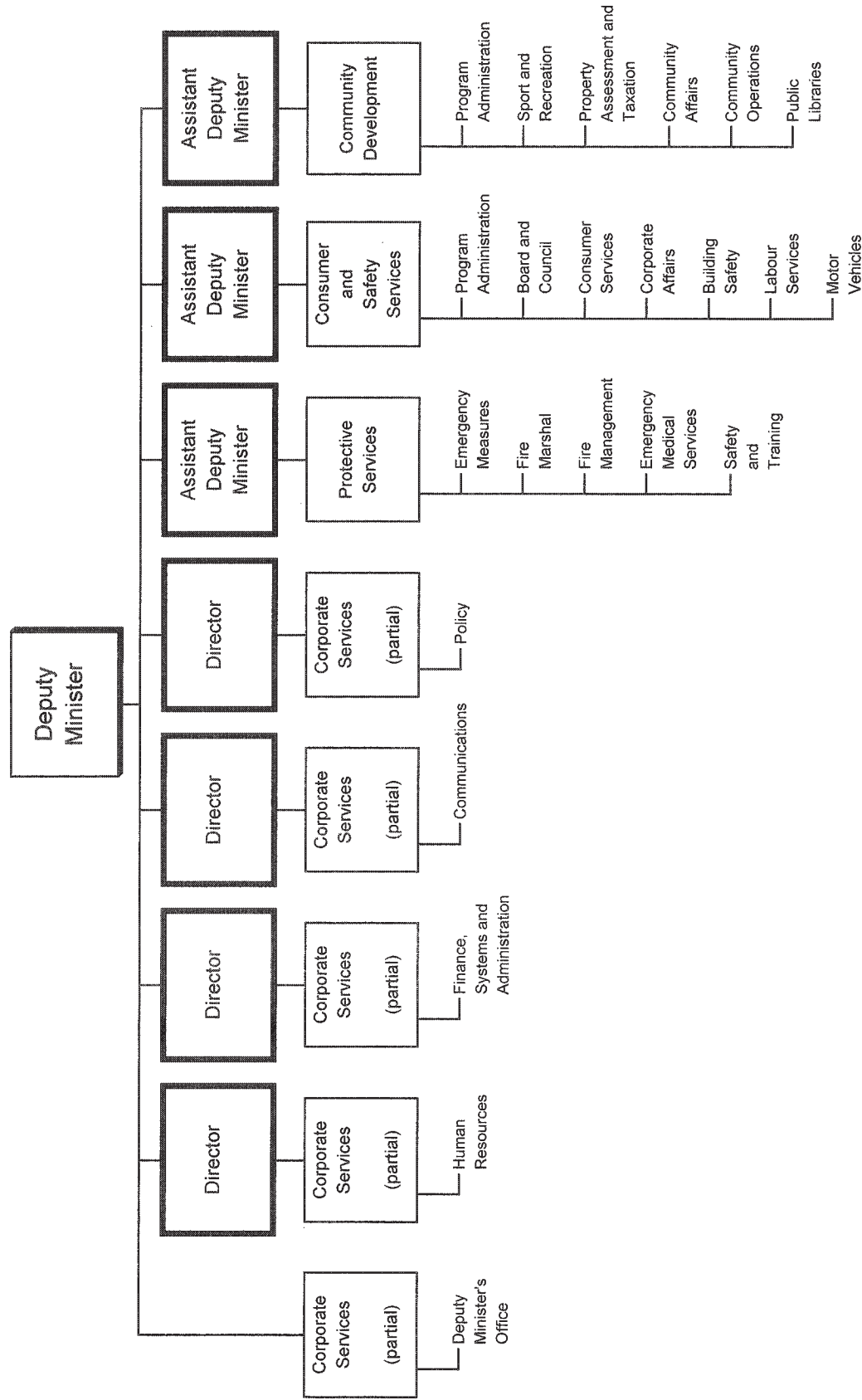
J. O'Farrell

DEPARTMENTAL OBJECTIVES

- To promote sustainable healthy communities by supporting local governments, community organizations, and the volunteer sector; encouraging active living through sport and recreation; and directly providing community services, property assessment and taxation, infrastructure and land development.
- To protect public safety through driver and vehicle programs; to provide community educational opportunities through public library programs; and to provide bilingual inquiry services to the public and Yukon government departments.
- To support the health, safety and protection of the public through programs such as the application of minimum building, electrical and mechanical codes; equitable and responsible employment practices; and orderly and accountable professional and commercial activity.
- To protect broad consumer interests through the provision of education, information and enforcement services.
- To assist and enable communities and people to protect themselves from the threat of wildland fire, structural fire and other emergencies or disasters and provision of emergency medical services.

DEPARTMENT OF COMMUNITY SERVICES

RELATIONSHIP BETWEEN ORGANIZATION AND PROGRAMS



Note: Dark outlined boxes represent positions reporting directly to the Deputy Minister. Other boxes represent programs. Activities are listed below the programs. Programs identified as "partial" represent responsibility for the program being shared by two or more positions reporting directly to the Deputy Minister.

VOTE 51
DEPARTMENT OF COMMUNITY SERVICES

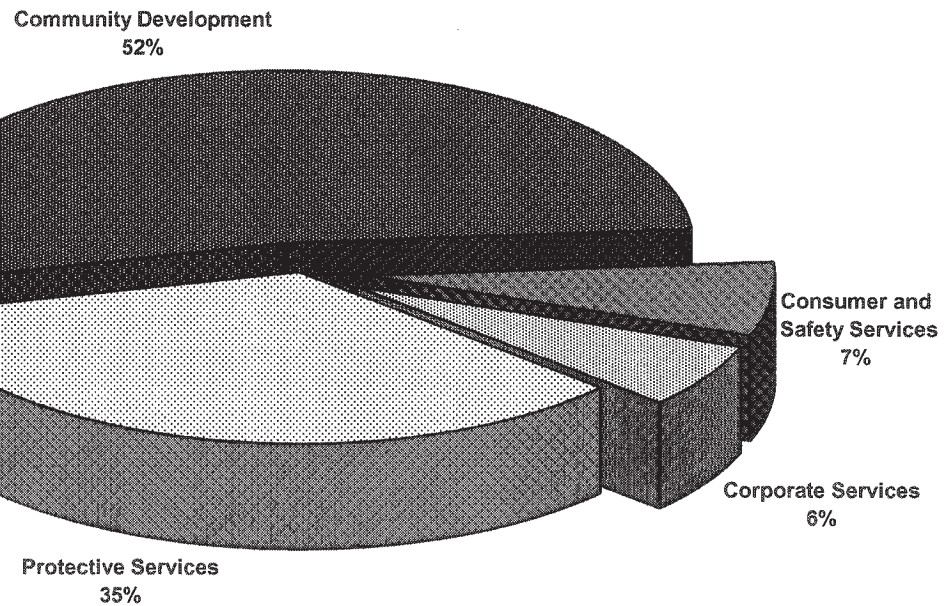
FINANCIAL SUMMARY (\$000s)	2010-11 ESTIMATE	Comparable		
		2009-10 FORECAST	2009-10 ESTIMATE	2008-09 ACTUAL
Operation and Maintenance Expenditures				
Corporate Services	3,939	3,780	3,695	3,649
Protective Services	22,713	24,405	22,316	22,373
Community Development	34,518	33,894	32,150	30,730
Consumer and Safety Services	4,593	4,533	4,533	4,428
Total Operation and Maintenance Vote 51	65,763	66,612	62,694	61,180
Amortization Expense				
	1,761	1,678	1,881	1,334
Revenues				
Taxes and General Revenues	9,968	10,011	9,536	10,155
Third-Party Recoveries	1,754	1,794	1,829	1,624
Recoveries from Canada	198	301	258	298
Amortization of Deferred Capital Contributions	235	234	242	268
Total Revenues	12,155	12,340	11,865	12,345
Allotments				
Personnel	22,854	22,777	22,094	20,637
Other	14,554	14,702	13,132	14,942
Transfer Payments	28,355	29,133	27,468	25,601
Total Allotments	65,763	66,612	62,694	61,180

Note:

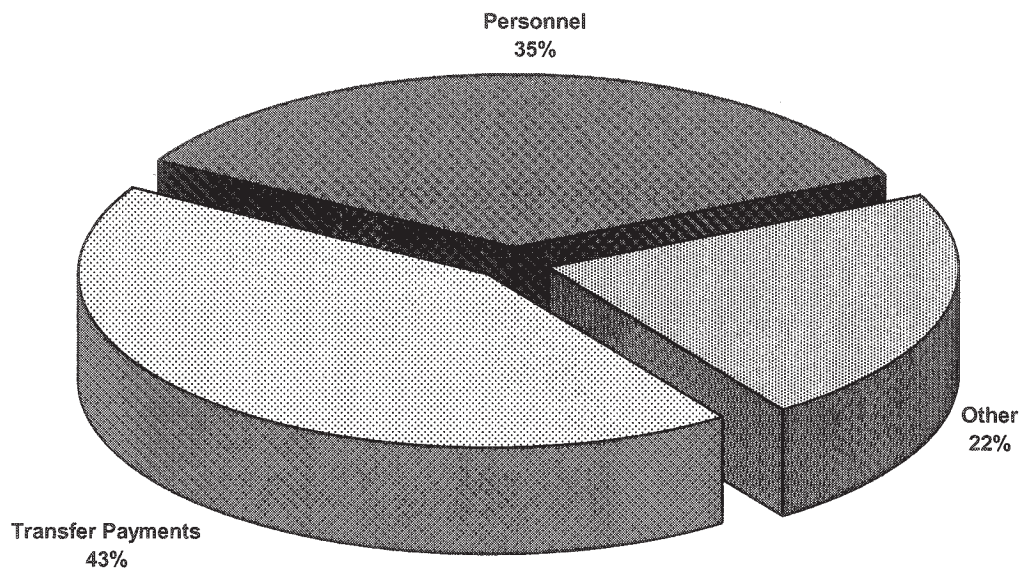
Restated 2009-10 Forecast, 2009-10 Estimate and 2008-09 Actual to be consistent with the 2010-11 Estimate presentation.

VOTE 51
DEPARTMENT OF COMMUNITY SERVICES

2010-11 Estimate
Distribution of O&M Expenditures by Program



2010-11 Estimate
Distribution of O&M Expenditures by Allotment



COMMUNITY SERVICES

CORPORATE SERVICES

PROGRAM OBJECTIVES

- To provide Community Services managers with direction, guidance and support services in the management and operation of human resource, financial and information systems and related administrative processes to ensure that resources are utilized effectively and efficiently in a coordinated manner.
- To provide legislative, policy, program development and communication support; to undertake corporate strategic and project specific planning; and to carry out program reviews and evaluations.

O&M EXPENDITURES (\$000s)	2010-11 ESTIMATE	Comparable		
		2009-10 FORECAST	2009-10 ESTIMATE	2008-09 ACTUAL
Activities				
Deputy Minister's Office	405	437	437	566
Human Resources	722	724	723	724
Finance, Systems and Administration	1,693	1,739	1,752	1,692
Policy	761	714	619	497
Communications	358	166	164	170
Total Corporate Services	3,939	3,780	3,695	3,649
Allotments				
Personnel	3,526	3,373	3,288	3,122
Other	413	407	407	527
Transfer Payments	0	0	0	0
Total Allotments	3,939	3,780	3,695	3,649

COMMUNITY SERVICES

PROTECTIVE SERVICES

PROGRAM OBJECTIVES

- To promote and foster emergency preparedness through the provision of guidance, coordination and support for the safety of people, mitigation of risk, protection of property, provision of public information, and the continuity of government in the event of disaster or major emergencies in conjunction with other levels of government, community emergency coordinators and volunteer organizations.
- To support health, safety and public protection through the administration and enforcement of the fire prevention and protection program along with other safety related programs like fuel storage and vehicle extrication response.
- To protect communities, families, individuals, property, and other natural, historic, cultural and community values from the harmful effects of wildland fire through the Wildfire Management program and policies and the FireSmart program.
- To support communities and volunteers providing emergency medical, ambulance and medevac services throughout the Yukon.

O&M EXPENDITURES (\$000s)	2010-11 ESTIMATE	Comparable		
		2009-10 FORECAST	2009-10 ESTIMATE	2008-09 ACTUAL
Activities				
Emergency Measures	434	633	433	599
Fire Marshal	861	851	794	933
Fire Management	14,165	15,666	14,841	13,921
Emergency Medical Services	6,913	7,056	6,067	6,920
Safety and Training	340	199	181	0
Total Protective Services	22,713	24,405	22,316	22,373
Allotments				
Personnel	11,430	11,485	10,628	9,983
Other	10,318	11,232	10,147	11,388
Transfer Payments	965	1,688	1,541	1,002
Total Allotments	22,713	24,405	22,316	22,373

COMMUNITY SERVICES

PROTECTIVE SERVICES Fire Marshal

STATISTICS

	2010 ESTIMATE	<i>Comparable</i>		
		2009 ACTUAL	2009 ESTIMATE	2008 ACTUAL
Fire Responses (#) *	650	554	600	650
Life Safety Inspections (#) *	30	17	50	39
Storage Tank Inspections (#)	75	72	75	78

* Statistics reported on a calendar year basis.

COMMUNITY SERVICES

PROTECTIVE SERVICES Emergency Medical Services Ambulance Services

STATISTICS

- Yukon Ambulance Services provides emergency transportation for residents and non-residents throughout the Territory. In Whitehorse, the Ambulance Station is staffed 24 hours a day. In rural communities, the service is provided by on-call volunteers with two full time Primary Care Paramedics in Dawson City and Watson Lake. The community provides the volunteers and Yukon government provides the ambulance, equipment and training.

	2010	<i>Comparable</i>		
	ESTIMATE	2009 ACTUAL	2009 ESTIMATE	2008 ACTUAL
Whitehorse				
Transfers	850	789	1,100	1,060
Medical Emergencies	4,300	3,821	3,800	3,094
Other	510	423	110	100
Total Ambulance Calls	5,660	5,033	5,010	4,254
Rural Communities				
Total Ambulance Calls	1,640	1,501	1,600	1,442
Transfer by Medevac Team *				
In Territory	395	371	450	385
Out-of-Territory	285	272	325	251
Total Medevacs	680	643	775	636

- * Medevac team is used when responding to patients with higher medical needs. A medevac team includes a medevac nurse.

Transfer by Medevac Team is the number of vehicle or aircraft movements.
Statistics are reported on a calendar year basis.

COMMUNITY SERVICES

COMMUNITY DEVELOPMENT

PROGRAM OBJECTIVES

- To encourage, strengthen, enable, and support local government in the Yukon.
- To establish and nurture partnerships with Yukon people, community organizations and the volunteer sector.
- To provide all Yukon taxing authorities with current, accurate and equitable property assessments, and establish general property tax rates for all areas outside municipalities.
- To promote health and safety in unincorporated communities throughout the Yukon by operating and maintaining community infrastructure such as landfills, water and sewer; and providing advice and project assistance to municipalities and Yukon First Nations upon request.
- To encourage and support active living and healthy lifestyles in communities through the promotion and development of recreation and sport.
- To provide bilingual inquiry services to the public and Yukon government departments.
- To support the growth and development of Yukon people, associations and communities by providing community education, information, culture and recreation opportunities and resources through public libraries.

O&M EXPENDITURES (\$000s)	2010-11 ESTIMATE	Comparable		
		2009-10 FORECAST	2009-10 ESTIMATE	2008-09 ACTUAL
Activities				
Program Administration	646	692	692	662
Sport and Recreation	4,201	4,844	3,808	3,380
Property Assessment and Taxation	3,977	3,987	3,987	3,837
Community Affairs	21,137	20,459	20,026	19,157
Public Libraries	1,795	1,737	1,737	1,615
Community Operations	2,762	2,175	1,900	2,079
Total Community Development	34,518	33,894	32,150	30,730
Allotments				
Personnel	4,044	4,026	4,285	3,778
Other	3,084	2,423	1,938	2,366
Transfer Payments	27,390	27,445	25,927	24,586
Total Allotments	34,518	33,894	32,150	30,730

COMMUNITY SERVICES

COMMUNITY DEVELOPMENT Sport and Recreation

STATISTICS

- Contributions to Summer Pool, Recreation Facility Operations, Programs, and Recreation Directors.

		Comparable		
	2010-11 ESTIMATE	2009-10 FORECAST	2009-10 ESTIMATE	2008-09 ACTUAL
Local Authorities (\$)				
Beaver Creek	33,200	33,190	33,200	33,190
Burwash Landing	7,400	7,409	7,400	7,409
Carcross	54,800	54,790	54,800	54,790
Destruction Bay	7,200	7,160	7,200	7,160
Keno City	3,200	3,200	3,200	3,200
Marsh Lake	39,600	39,600	39,600	39,600
Mount Lorne	39,400	39,390	39,400	39,390
Old Crow	46,200	46,190	46,200	46,190
Pelly Crossing	51,500	51,480	51,500	51,480
Ross River	81,600	81,570	81,600	0
Tagish	35,300	35,260	35,300	35,260
Upper Liard	18,700	18,690	18,700	18,690
	418,100	417,929	418,100	336,359

COMMUNITY SERVICES

COMMUNITY DEVELOPMENT Sport and Recreation

STATISTICS

	2010-11 ESTIMATE	Comparable		
		2009-10 FORECAST	2009-10 ESTIMATE	2008-09 ACTUAL
Sport Governing Bodies				
Yukon Sport Governing Bodies (YSGBs)				
Funded (#)	27	27	25	25
YSGB Affiliated Clubs Across Yukon (#)	105	102	101	101
YSGB Members (#)	10,500	10,318	11,000	9,608
Elite Athletes Funded (#)	25	25	20	28
Athletes Placed in Top Three International or National Competitions (#)	25	25	20	28
Active Coaches and Officials (#)	1,350	1,300	1,300	1,264
Dollars provided and claimed for administration, training, and competition. (Yukon Lotteries Commission contributes funding toward this amount.) Includes Yukon Sport Governing Bodies, Sport Yukon, Arctic Winter Games, Canada Senior Games, Elite Athletes and High Performance Coaches and Officials				
Total (\$)	2,655,000	3,322,000	2,286,000	1,949,941
Special Recreation Groups				
Yukon Special Recreation Groups Funded (#)	8	7	7	7
Members (#)	6,900	6,000	9,800	8,595
Dollars provided for administration, training and programs including: North American Indigenous Games, Special Olympics, Youth Special Recreation Groups, Active Living/Recreation and Parks Association of Yukon, Yukon Disabilities Association, and Elder Active Recreation Association.				
Total (\$)	668,000	668,000	668,000	616,314

COMMUNITY SERVICES

COMMUNITY DEVELOPMENT Property Assessment and Taxation

STATISTICS

	2010-11 ESTIMATE	Comparable		
		2009-10 FORECAST	2009-10 ESTIMATE	2008-09 ACTUAL
Assessments				
Properties Assessed (#)	21,088	20,876	20,844	20,737
Total Assessed Value (\$000s)	3,417,586	3,230,942	3,222,230	3,123,897
Cost Per Property Assessment (\$)	25	25	25	25
Complaints (#)				
- Assessment Review Board	20	20	50	10
Appeals (#)				
- Assessment Appeal Board	5	5	5	2
Taxation				
Home Owner Grants Paid (#)	7,900	7,750	7,550	7,567
Average Home Owner Grant (\$)	401	409	411	405

COMMUNITY SERVICES

COMMUNITY DEVELOPMENT Community Affairs

STATISTICS

	2010-11 ESTIMATE	<i>Comparable</i>		
		2009-10 FORECAST	2009-10 ESTIMATE	2008-09 ACTUAL
Transfer Payments (\$)				
Grant-in-Lieu of Property Taxes	5,254,000	5,465,000	4,983,077	4,982,076
Community/Local Advisory Council Operation and Maintenance Grants	70,000	70,000	70,467	54,496
Association of Yukon Communities	100,000	100,000	100,000	100,000
Comprehensive Municipal Grants	<u>14,962,000</u>	<u>14,154,000</u>	<u>14,154,010</u>	<u>13,345,510</u>
Total Transfer Payments	<u><u>20,386,000</u></u>	<u><u>19,789,000</u></u>	<u><u>19,307,554</u></u>	<u><u>18,482,082</u></u>

COMMUNITY SERVICES

COMMUNITY DEVELOPMENT Program Administration

STATISTICS

	2010-11 ESTIMATE	Comparable		
		2009-10 FORECAST	2009-10 ESTIMATE	2008-09 ACTUAL
Inquiry Centre				
Telephone Calls Answered (including 1-800)	30,266	29,568	27,515	29,182
Counter Inquiries Responded	3,080	3,415	2,800	3,099
Written Requests Responded	715	516	650	579
Building Tours Provided (tours/people)	97/200	126/269	89/154	87/189
French Calls Responded	175	221	110	142

COMMUNITY SERVICES

COMMUNITY DEVELOPMENT Community Operations

STATISTICS

	2010-11 ESTIMATE	Comparable		
		2009-10 FORECAST	2009-10 ESTIMATE	2008-09 ACTUAL
Unincorporated Community Services				
Street Lights (#)	246	243	243	240
Water Delivery Customers (#)				
Carcross	210	197	189	189
Keno City	25	23	16	16
Old Crow	111	111	126	126
Ross River	170	167	185	185
(Note: # of customers within +/- 10%)				
Sewage Eduction Services Customers (#)				
Old Crow	111	111	128	126
Sewer Systems Customers (#)				
Destruction Bay	12	12	12	12
Solid Waste Sites Operated (#)	18	20	22	20
Mosquito Control (#)				
Hectares Treated with Larvicide	700	711	935	700
Communities Participating in Larvicide Program	11	11	13	11

COMMUNITY SERVICES

COMMUNITY DEVELOPMENT Public Libraries

STATISTICS

	2010-11 ESTIMATE	Comparable		
		2009-10 FORECAST	2009-10 ESTIMATE	2008-09 ACTUAL
Library Collections (#)				
Materials Processed *	9,500	9,300	9,400	8,721
Material Distributed to Libraries	20,000	19,049	18,000	15,957
* Figures include videos, books and audio visual material catalogued for Yukon Public Libraries.				
Library Circulation (#)				
Whitehorse Public Library	150,000	148,000	145,000	138,434
Communities	25,000	26,000	35,000	30,038
Library cards (new and renewed)	10,000	23,000	11,000	9,910
Library Use (#)				
Whitehorse Public Library Visits	210,000	214,000	230,000	203,067
Library Programs - Attendance Whitehorse	4,000	4,000	4,000	4,161
Library Programs - Attendance Communities	4,000	4,000	3,300	3,349
Reference Questions (#)				
Whitehorse Public Library	20,000	21,000	16,000	14,595
Communities	5,000	5,600	8,000	7,959
External to Yukon Inter-library Loan				
- Requests Filled	1,000	900	1,200	1,101
Internet Sessions Booked *				
- Whitehorse Public Library	33,000	33,000	33,000	31,764
- Communities	23,000	23,000	28,000	25,756

* Internet use is a significant activity in Yukon Public Libraries, with public access available in all community libraries.

COMMUNITY SERVICES

CONSUMER AND SAFETY SERVICES

PROGRAM OBJECTIVES

- To encourage and maintain equitable and responsible employment practices and to promote public interest in positive labour management relations through enforcement of minimum employment standards.
- To encourage and ensure orderly and responsible commercial activity through maintenance of enabling legislation, disclosure requirements and public information registries.
- To protect and enhance the public interest in professional and commercial services, and assist in consumer protection through education, provision of information and enforcement of legislation.
- To support, administer and enforce building, plumbing, electrical and mechanical standards in conjunction with reviewing development permits and maintaining a building information repository.
- To protect public safety through appropriate driver licensing and vehicle registration programs.
- To provide the public with an appeal process on motor vehicle licensing and regulatory decisions which balances public safety with individual rights and responsibilities.

O&M EXPENDITURES (\$000s)	2010-11 ESTIMATE	Comparable		
		2009-10 FORECAST	2009-10 ESTIMATE	2008-09 ACTUAL
Activities				
Program Administration	158	181	151	135
Board and Council	118	105	105	97
Consumer Services	742	782	790	798
Corporate Affairs	425	412	416	487
Motor Vehicles	1,370	1,317	1,317	1,247
Building Safety	1,292	1,257	1,269	1,272
Labour Services	488	479	485	392
Total Consumer and Safety Services	4,593	4,533	4,533	4,428
Allotments				
Personnel	3,854	3,893	3,893	3,754
Other	739	640	640	661
Transfer Payments	0	0	0	13
Total Allotments	4,593	4,533	4,533	4,428

COMMUNITY SERVICES

CONSUMER AND SAFETY SERVICES

Consumer Services

STATISTICS

- To provide safeguards to consumers in acquiring goods and services, in order to contribute to the efficient functioning of the marketplace and to ensure that those licensed to provide services are adequately qualified.

	2010-11 ESTIMATE	Comparable		
		2009-10 FORECAST	2009-10 ESTIMATE	2008-09 ACTUAL
Yukon Professional Licences (#)				
Insurance Companies	178	178	186	186
Agents, Salespersons, Adjusters and Brokers	956	956	899	899
Medical Professionals	197	197	187	187
Medical Practice Corporations	28	28	33	31
Chiropractors	9	9	9	9
Dental Professionals	42	42	55	55
Dental Corporations	7	7	12	12
Dental Hygienists/Therapists	40	40	40	40
Denture Technicians	2	2	2	2
Optometrists	6	6	5	5
Pharmacists	36	36	40	40
Physiotherapist	37	37	34	34
Physiotherapist Corporations	2	1	2	1
Licensed Practical Nurses	95	92	78	79
Psychiatric Nurses	5	4	0	0
Collection Agencies	43	43	47	47
Collection Agency Employees	1,657	1,657	1,540	1,540
Real Estate Agencies	5	5	7	7
Real Estate Salespersons	31	31	32	31
Private Investigators and Security Guards	37	37	33	33
Security Agencies	12	12	11	11
Funeral Directors	2	2	3	3
Pawn Brokers and Second Hand Dealers	3	3	2	2

COMMUNITY SERVICES

CONSUMER AND SAFETY SERVICES

Consumer Services

STATISTICS

	2010-11	Comparable		
	ESTIMATE	2009-10 FORECAST	2009-10 ESTIMATE	2008-09 ACTUAL
Inquiries/Complaints (#)				
Consumer Inquiries	260	260	265	261
Health Professionals (all)	604	604	450	424
Insurance	380	380	379	379
Landlord and Tenant	800	800	750	798
Other	500	500	607	465
Boards of Inquiry/Arbitrations (#)				
Health Professionals (all)	1	1	1	0
Insurance	1	0	1	0
Landlord and Tenant	1	0	1	0
Other	1	0	1	0
Yukon Medical Council				
Letters to Licensing Inquiries (#)	215	209	225	211
Complaints against a Physician	4	6	2	2

COMMUNITY SERVICES

CONSUMER AND SAFETY SERVICES Consumer Services

STATISTICS

	2010-11 ESTIMATE	Comparable		
		2009-10 FORECAST	2009-10 ESTIMATE	2008-09 ACTUAL
Lotteries/Games of Chance Activities				
Licences Issued (#)	135	133	123	123
Amount Wagered:				
- Bingos (\$)	2,825,000	2,700,000	2,825,000	3,315,898
- Raffles and Sport Pools (\$)	600,000	550,000	670,000	943,771
- Casinos, gross profit (\$)	33,450	33,480	15,000	20,600
Prizes:				
- Bingos (\$)	2,000,000	1,900,000	2,105,000	2,341,091
- Raffles and Sport Pools (\$)	226,000	215,000	250,000	334,903
Expenses:				
- Bingos (\$)	199,000	190,000	220,000	238,214
- Raffles and Sport Pools (\$)	30,000	30,000	40,000	35,889
- Casinos (\$)	10,000	9,900	5,000	5,745
Net: Proceeds used for Charitable Objectives				
- Bingos (\$)	626,000	610,000	500,000	736,593
- Raffles and Sport Pools (\$)	344,000	305,000	380,000	572,979
- Casinos (\$)	23,450	23,580	10,000	14,855
Diamond Tooth Gertie's: *				
Blackjack, Wheels of Fortune, Roulette and Red Dog:				
Drop (Amount Wagered \$)	1,840,000	1,834,861	1,735,600	1,735,621
Win (Amount Paid Out \$)	1,453,000	1,447,870	1,302,600	1,302,696
Hold (Balance held by organization before expenses \$)	387,000	386,991	433,000	432,925
Poker Revenue (\$)	173,000	173,004	181,400	181,418
Slot Machines:				
Coin In (\$)	17,100,000	17,080,571	16,863,000	18,486,097
Coin Out (\$)	15,814,000	15,794,975	15,413,000	17,038,354
Gross Revenue (\$)	1,286,000	1,285,596	1,450,000	1,447,743

* Diamond Tooth Gertie's statistics reported on a calendar year basis.

COMMUNITY SERVICES

CONSUMER AND SAFETY SERVICES Corporate Affairs

STATISTICS

- To protect and enhance the public interest in professional and commercial activities.
- To establish and maintain enabling legislation and basic disclosure and information requirements related to commercial activities.

	2010-11 ESTIMATE	Comparable		
		2009-10 FORECAST	2009-10 ESTIMATE	2008-09 ACTUAL
Corporate Registry				
All Transactions (#)*	25,500	25,500	25,500	26,420
Revenue (\$)	290,000	290,000	290,000	245,666
Partnership/Business Names Registry				
All Transactions (#)*	2,800	2,800	2,800	2,935
Revenue (\$)	40,000	40,000	40,000	41,885
Personal Property Security				
Financing Statements/Changes (#)	5,400	5,400	5,400	5,349
Searches Conducted (#)	5,900	5,900	5,900	5,835
Revenue (\$)	52,000	52,000	52,000	83,405
Societies				
All Transactions (#)*	1,500	1,500	1,500	1,641
Revenue (\$)	6,900	6,900	6,900	11,108
Securities				
Annual Information Form/ Prospectuses filed (#)	3,920	3,920	3,920	3,800
Brokers/Salespersons Registration (CARS) Transactions (#)*	514	514	514	466
Other Filings (#)	602	602	602	548
Registrar's Orders (#)	15	15	15	10
Revenue (\$)	1,731,100	1,611,100	1,411,100	1,725,531

* Corporate Affairs Registry System (CARS) Transactions: these are all registrations that are tracked by the computer systems. These do not include phone calls, personal inquiries, searches etc. Includes online public searches.

COMMUNITY SERVICES

CONSUMER AND SAFETY SERVICES

Building Safety

STATISTICS

	2010	Comparable		
	ESTIMATE	2009	2009	2008
		ACTUAL	ESTIMATE	ACTUAL
Codes and Standards *				
Permits Issued (#)				
Building	700	748	476	678
Plumbing	115	91	162	147
Development	80	52	130	118
Electrical	1,100	1,082	1,100	1,150
Gas	450	478	400	377
New Boiler and Pressure Vessels	75	75	30	33
Total Permits Issued	2,520	2,526	2,298	2,503
Building File Information Requests *	1,500	1,457	1,718	1,562
Inspections (#) *				
Building	2,000	1,583	2,206	2,005
Plumbing	525	509	624	567
Electrical	1,350	1,643	1,200	1,224
Elevators	130	132	50	49
Boiler and Pressure Vessels	1,000	1,246	450	410
Gas	480	478	450	457
Total Inspections	5,485	5,591	4,980	4,712

* Statistics reported on a calendar year basis.

COMMUNITY SERVICES

CONSUMER AND SAFETY SERVICES Labour Services

STATISTICS

- To ensure compliance with minimum standards of employment for wages and working conditions in order to establish a fair and equitable work environment for the labour force.

	2010-11 ESTIMATE	<i>Comparable</i>		
		2009-10 FORECAST	2009-10 ESTIMATE	2008-09 ACTUAL
Wage Offence Complaints Investigated (#)	115	110	110	113
Wage Offences (#)	220	205	200	229
Inquiries (#)	2,500	2,500	3,200	3,670
Wages Collected (\$)	140,000	100,000	130,000	187,771
Wages Uncollected (\$)	34,000	46,000	15,000	38,158
Certificates for Wages Issued (\$) *	60,000	105,000	10,000	93,751
Certificates for Wages Filed (\$) *	25,000	45,000	5,000	44,395
Administration Fees on Certificates Issued (\$) **	1,000	750	500	2,438
Assessment of Administrative Penalty (#)	2,000	2,250	4,000	2,203

* Supplementary certificates are also included in both columns (against Directors of Corporations).

** Estimated administrative fees and penalties levied as a result of changes made in 1998 to the Employment Standards Act.

COMMUNITY SERVICES

CONSUMER AND SAFETY SERVICES Motor Vehicles

STATISTICS

	2010-11 ESTIMATE	Comparable		
		2009-10 FORECAST	2009-10 ESTIMATE	2008-09 ACTUAL
Motor Vehicles Registrations (#)				
Private	22,684	22,240	26,000	26,820
Commercial	4,841	4,793	5,600	5,559
Dealer	132	136	150	181
Motorcycles	935	926	950	979
Snow machine/ATV	933	924	1,000	1,121
Trailer	3,444	3,410	4,000	4,137
Rental	643	630	850	878
	33,612	33,059	38,550	39,675
Operators Licences (approximate)				
	25,529	25,276	24,600	24,724

- Above statistics reflect active registrations/licences in a fiscal year, not number issued.

COMMUNITY SERVICES

REVENUES (\$000s)	2010-11 ESTIMATE	Comparable		
		2009-10 FORECAST	2009-10 ESTIMATE	2008-09 ACTUAL
TAXES AND GENERAL REVENUES				
Protective Services				
Fuel Storage Tank Permits	4	4	4	3
Community Development				
Interest on Local Improvement	150	150	150	159
General Property Tax	3,300	3,350	3,300	3,029
Grant-in-Lieu	150	150	150	142
Library Fines	8	8	8	8
Photocopier Fees	5	5	5	2
Prior Years' Revenues	0	0	0	2
Consumer and Safety Services				
Professional/Consumer Licensing	347	380	235	298
Business/Corporate Licensing	2,120	2,000	1,800	2,108
Building Safety Licences and Fees	290	370	290	361
Labour Services	3	3	3	5
Private Vehicle Licences	1,198	1,198	1,198	1,283
Commercial Vehicle Licences	2,022	2,022	2,022	2,276
Miscellaneous Motor Vehicle Revenue	371	371	371	479
Total Taxes and General Revenues	9,968	10,011	9,536	10,155
THIRD-PARTY RECOVERIES				
Corporate Services				
Shared Services	481	481	481	457
Protective Services				
Emergency Medical Services	25	25	100	9
Community Development				
Community Recreation/Active Living	87	87	87	83
Sport	323	359	323	289
Community Assessments	405	409	405	410
Water and Sewer Services	412	412	412	316
Mosquito Control	21	21	21	43
Consumer and Safety Services				
Prior Years' Recoveries	0	0	0	17
Total Third-Party Recoveries	1,754	1,794	1,829	1,624

COMMUNITY SERVICES

REVENUES (\$000s)	2010-11 ESTIMATE	Comparable		
		2009-10 FORECAST	2009-10 ESTIMATE	2008-09 ACTUAL
RECOVERIES FROM CANADA				
Protective Services				
Prior Years' Recoveries	0	43	0	47
Community Development				
Sport	192	252	252	226
Author Readings	4	4	4	5
Prior Years' Recoveries	0	0	0	15
Consumer and Safety Services				
Motor Vehicle	2	2	2	5
Total Recoveries from Canada	198	301	258	298
Amortization of Deferred Capital Contributions	235	234	242	268
TOTAL REVENUES	12,155	12,340	11,865	12,345

COMMUNITY SERVICES

TRANSFER PAYMENTS (\$000s)	2010-11 ESTIMATE	Comparable		
		2009-10 FORECAST	2009-10 ESTIMATE	2008-09 ACTUAL
LEGISLATED GRANTS				
Community Development				
In-Lieu of Property Taxes	5,254	5,465	4,983	4,982
Home Owner Grants	3,170	3,170	3,170	3,065
Comprehensive Municipal Grants	14,962	14,154	14,154	13,345
Total Legislated Grants	23,386	22,789	22,307	21,392
OTHER TRANSFER PAYMENTS				
Protective Services				
Emergency Measures Preparation	5	5	5	5
Fire Management - FireSmart	850	1,350	1,350	779
Emergency Medical Services				
- Volunteer Bursary Fund	60	60	60	120
- Volunteer Awards Fund	20	20	20	40
- Volunteer Community Allowances	30	30	30	30
Prior Years' Other Transfer Payments	0	223	76	28
Community Development				
Community/Local Advisory Council				
Operation and Maintenance	70	70	70	55
Community Recreation/Active Living	668	668	668	616
Sport	1,535	2,322	2,286	1,630
2011 Canada Winter Games	120	0	0	0
2012 Arctic Winter Games	1,000	400	0	0
Association of Yukon Communities	100	100	100	100
Volunteer Bureau	67	67	67	67
Mae Bachur Animal Shelter	75	75	75	75
Dawson Humane Society	20	20	20	20
Community Library Boards	349	334	334	311
Prior Years' Other Transfer Payments	0	600	0	320
Consumer and Safety Services				
Prior Years' Other Transfer Payments	0	0	0	13
Total Other Transfer Payments	4,969	6,344	5,161	4,209
TOTAL TRANSFER PAYMENTS	28,355	29,133	27,468	25,601