

# **ELECTIONS OFFICE**



**VOTE 24  
ELECTIONS OFFICE**

**SPEAKER OF THE ASSEMBLY**

**Hon. T. Staffen**

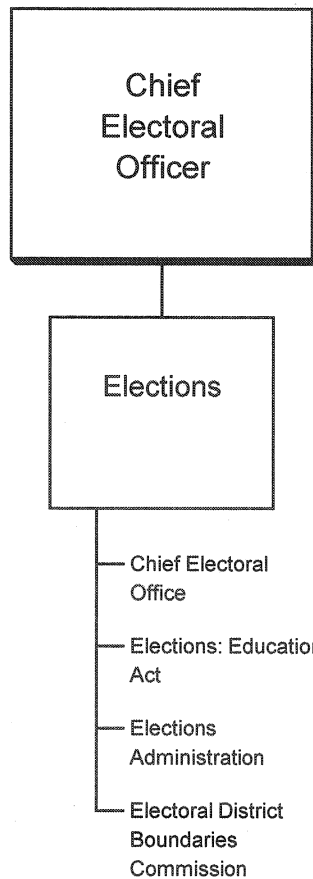
**CHIEF ELECTORAL OFFICER**

**J. Waugh**

- To manage and conduct elections of Members of the Yukon Legislative Assembly and school-governing groups.
- To provide administrative support for electoral district boundaries commission.

# ELECTIONS OFFICE

## RELATIONSHIP BETWEEN ORGANIZATION AND PROGRAMS

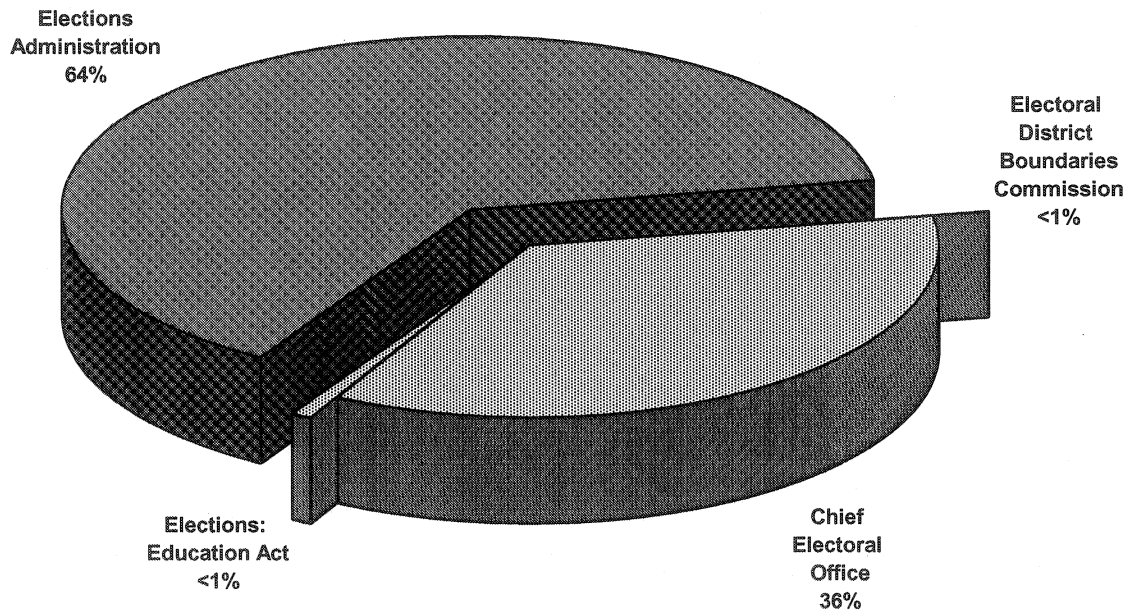


**VOTE 24  
ELECTIONS OFFICE**

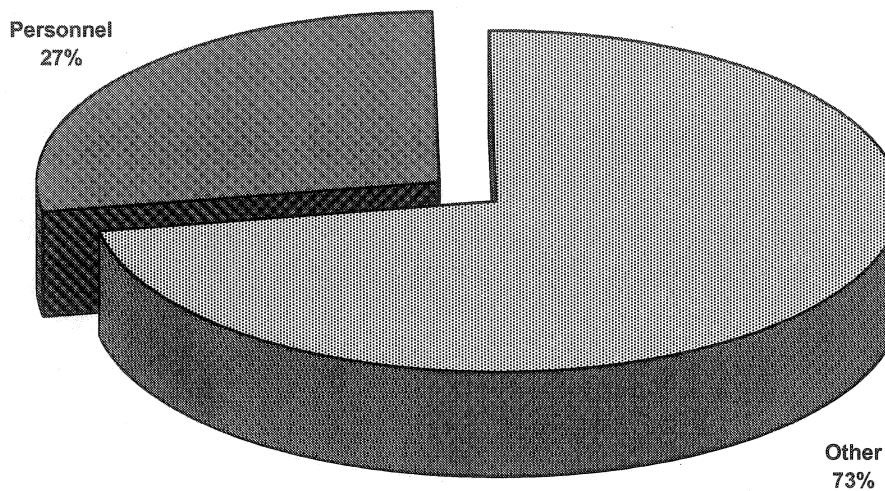
<b>FINANCIAL SUMMARY (\$000s)</b>	<b>2011-12 ESTIMATE</b>	<i>Comparable</i>		
		2010-11 FORECAST	2010-11 ESTIMATE	2009-10 ACTUAL
<b>Operation and Maintenance Expenditures</b>				
Elections	1,008	486	427	319
<b>Total Operation and Maintenance Vote 24</b>	<b>1,008</b>	<b>486</b>	<b>427</b>	<b>319</b>
<b>Amortization Expense</b>	<b>0</b>	<b>0</b>	<b>0</b>	<b>0</b>
<b>Revenues</b>	<b>0</b>	<b>0</b>	<b>0</b>	<b>0</b>
<b>Allotments</b>				
Personnel	277	247	242	241
Other	731	239	185	78
Transfer Payments	0	0	0	0
<b>Total Allotments</b>	<b>1,008</b>	<b>486</b>	<b>427</b>	<b>319</b>

**VOTE 24  
ELECTIONS OFFICE**

**2011-12 Estimate  
Distribution of O&M Expenditures by Activity**



**2011-12 Estimate  
Distribution of O&M Expenditures by Allotment**



## ELECTIONS OFFICE

## ELECTIONS

### PROGRAM DESCRIPTION

- Maintain the elections administrative structure in a state of readiness for the call of an election.
- Conduct by-elections and general elections of Members to the Yukon Legislative Assembly.
- Report to the Yukon Legislative Assembly on election-related matters.
- Conduct elections of members of School Councils and trustees of School Boards pursuant to the *Education Act*.
- Provide consultative services and resources regarding election administration to other agencies.
- Provide secretariat services to electoral district boundaries commission.

O&M EXPENDITURES (\$000s)	2011-12 ESTIMATE	Comparable		
		2010-11 FORECAST	2010-11 ESTIMATE	2009-10 ACTUAL
<b>Activities</b>				
Chief Electoral Office	360	351	351	317
Elections: Education Act	7	76	76	2
Elections Administration	641	59	one dollar	0
Electoral District Boundaries Commission	one dollar	one dollar	one dollar	0
<b>Total Elections</b>	<b>1,008</b>	<b>486</b>	<b>427</b>	<b>319</b>
<b>Allotments</b>				
Personnel	277	247	242	241
Other	731	239	185	78
Transfer Payments	0	0	0	0
<b>Total Allotments</b>	<b>1,008</b>	<b>486</b>	<b>427</b>	<b>319</b>