

WOMEN'S DIRECTORATE

VOTE 11
WOMEN'S DIRECTORATE

MINISTER

Hon. M. Horne

A/DIRECTOR

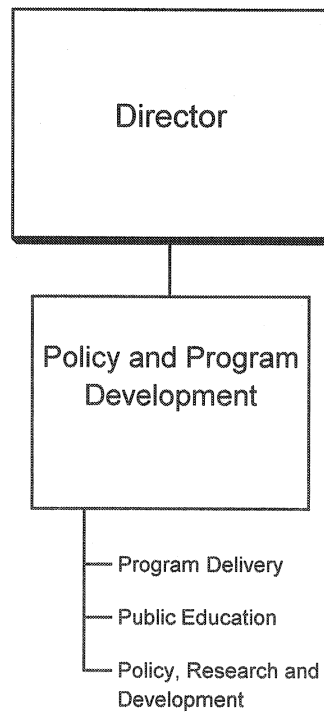
S. Curtin

DEPARTMENTAL OBJECTIVE

- To support the Government of Yukon's commitment to the economic, legal and social equality of women.

WOMEN'S DIRECTORATE

RELATIONSHIP BETWEEN ORGANIZATION AND PROGRAMS

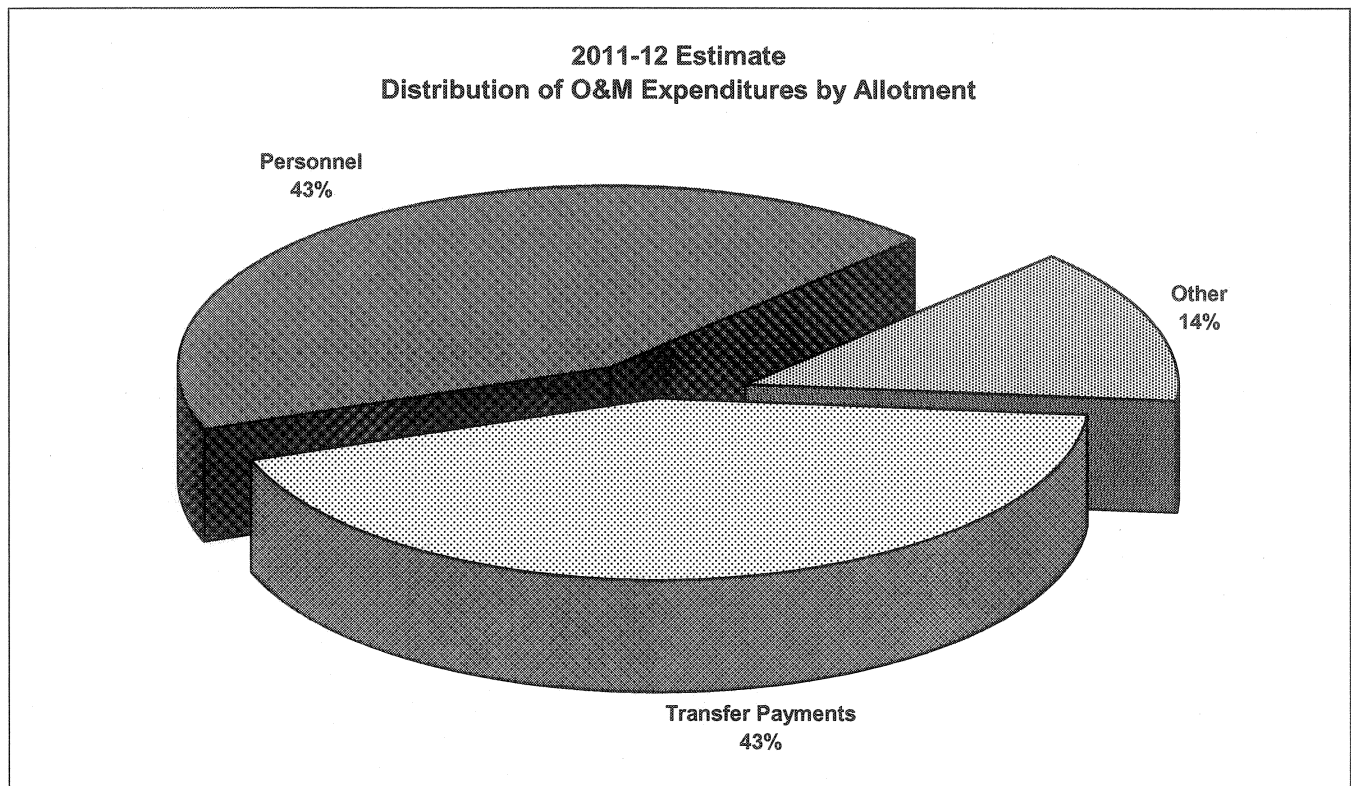
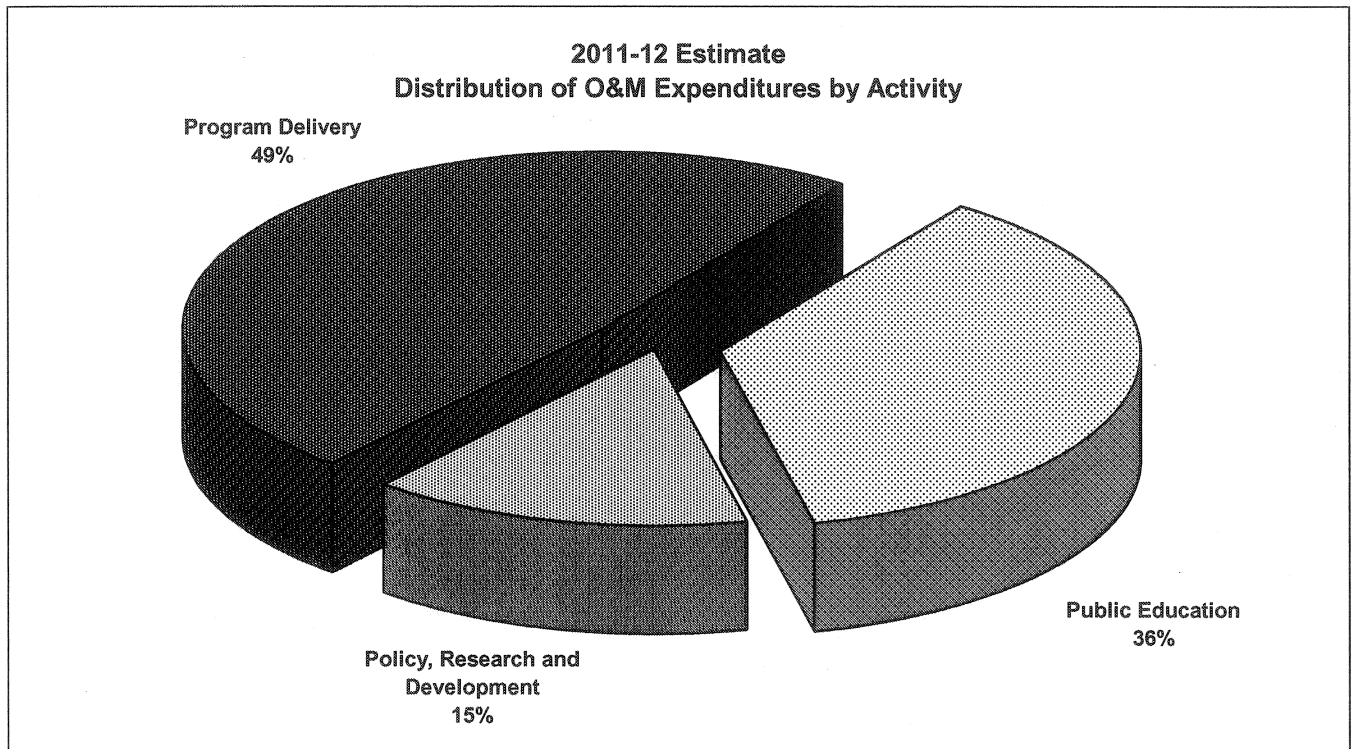


**VOTE 11
WOMEN'S DIRECTORATE**

FINANCIAL SUMMARY (\$000s)	2011-12 ESTIMATE	<i>Comparable</i>		
		2010-11 FORECAST	2010-11 ESTIMATE	2009-10 ACTUAL
Operation and Maintenance Expenditures				
Policy and Program Development	1,759	1,809	1,747	1,130
Total Operation and Maintenance Vote 11	1,759	1,809	1,747	1,130
Amortization Expense	2	0	0	0
Revenues	0	0	0	0
Allotments				
Personnel	762	753	707	590
Other	243	260	255	174
Transfer Payments	754	796	785	366
Total Allotments	1,759	1,809	1,747	1,130

Note:
Restated 2009-10 Actual to be consistent with the 2011-12 Estimate presentation.

**VOTE 11
WOMEN'S DIRECTORATE**



WOMEN'S DIRECTORATE

POLICY AND PROGRAM DEVELOPMENT

PROGRAM OBJECTIVES

- To provide leadership in policy research and development to ensure gender equitable outcomes in government legislation, policy, and programs.
- To promote women and girls' equality by raising awareness of women's issues through effective public education.
- To support community-based initiatives that enhance women and girls' equality.

O&M EXPENDITURES (\$000s)	2011-12 ESTIMATE	Comparable		
		2010-11 FORECAST	2010-11 ESTIMATE	2009-10 ACTUAL
Activities				
Program Delivery	862	855	804	691
Public Education	638	644	633	343
Policy, Research and Development	259	310	310	96
Total Policy and Program Development	1,759	1,809	1,747	1,130
Allotments				
Personnel	762	753	707	590
Other	243	260	255	174
Transfer Payments	754	796	785	366
Total Allotments	1,759	1,809	1,747	1,130

WOMEN'S DIRECTORATE

TRANSFER PAYMENTS (\$000s)	2011-12 ESTIMATE	Comparable		
		2010-11 FORECAST	2010-11 ESTIMATE	2009-10 ACTUAL
OTHER TRANSFER PAYMENTS				
Policy and Program Development				
Victoria Faulkner Women's Centre				
- Women's Advocate	60	60	60	60
Women's Equality Fund	300	300	300	206
Family Violence and Violence Against				
Women Prevention Initiatives	200	211	200	95
Women's Community Projects	10	10	10	5
Northern Strategy				
- Aboriginal Women's Programs	184	215	215	0
TOTAL TRANSFER PAYMENTS	754	796	785	366