

JUSTICE

VOTE 08
DEPARTMENT OF JUSTICE

MINISTER

Hon. M. Horne

DEPUTY MINISTER

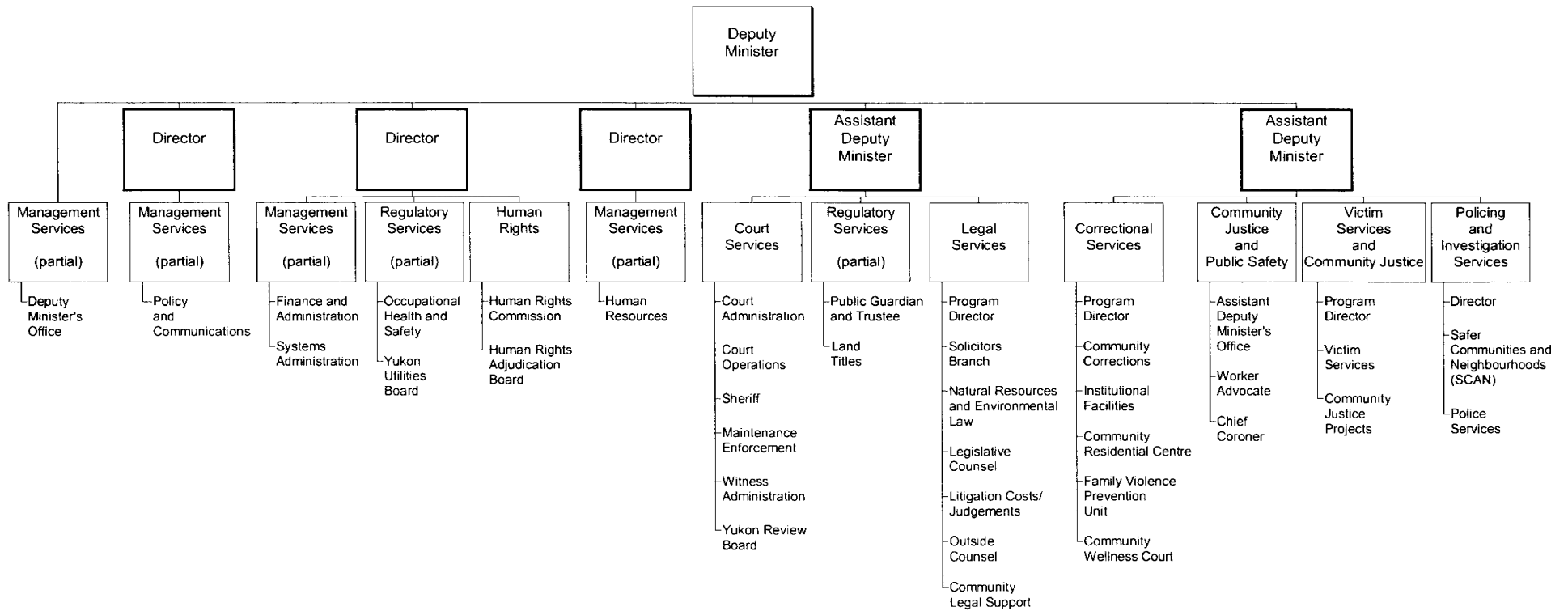
D. Cooley

DEPARTMENTAL OBJECTIVE

- The Yukon Department of Justice operates to:
 - enhance public confidence in, and respect for, the law and society;
 - promote an open and accessible system of justice that provides fair and equal services to all Yukon citizens;
 - ensure that the administration of justice operates for the benefit of all persons in Yukon;
 - work toward an effective and responsive correctional system to manage offenders in ways that offer opportunities for healing and hope for change, while ensuring public safety;
 - ensure that the Government of Yukon receives high quality and cost-effective legal services;
 - promote effective policing, crime prevention and community justice initiatives in our communities; and
 - encourage respect for individual, collective and human rights.

DEPARTMENT OF JUSTICE

RELATIONSHIP BETWEEN ORGANIZATION AND PROGRAMS



Note: Dark outlined boxes represent positions reporting directly to the Deputy Minister. Other boxes represent programs. Activities/elements are listed below the programs. Programs identified as "partial" represent responsibility for the program being shared by two or more positions reporting directly to the Deputy Minister.

VOTE 08
DEPARTMENT OF JUSTICE

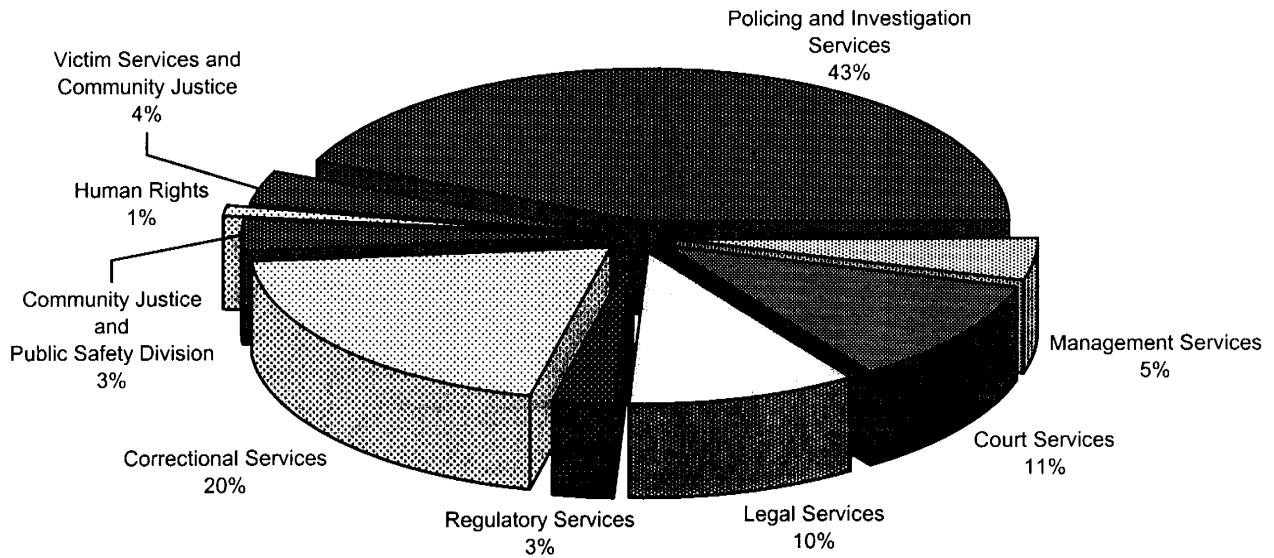
| FINANCIAL SUMMARY (\$000s) | 2009-10 ESTIMATE | 2008-09 FORECAST | % CHANGE | 2007-08 ACTUAL |
|--|-----------------------------|-----------------------------|---------------------|---------------------------|
| Operation and Maintenance Expenditures | | | | |
| Management Services | 2,390 | 2,428 | -2% | 2,301 |
| Court Services | 5,807 | 6,051 | -4% | 5,585 |
| Legal Services | 5,266 | 5,114 | 3% | 4,706 |
| Regulatory Services | 1,461 | 1,383 | 6% | 1,337 |
| Correctional Services | 10,460 | 10,214 | 2% | 9,622 |
| Community Justice and Public Safety Division | 1,804 | 1,917 | -6% | 1,714 |
| Human Rights | 516 | 516 | 0% | 695 |
| Victim Services and Community Justice | 1,941 | 2,338 | -17% | 2,195 |
| Policing and Investigation Services | 22,681 | 19,714 | 15% | 15,778 |
| Total Operation and Maintenance Vote 08 | 52,326 | 49,675 | 5% | 43,933 |
| Amortization Expense | 824 | 1,036 | -20% | 670 |
| Revenues | | | | |
| Taxes and General Revenues | 700 | 660 | 6% | 715 |
| Third-Party Recoveries | 468 | 530 | -12% | 466 |
| Recoveries from Canada | 1,507 | 1,907 | -21% | 2,100 |
| Total Revenues | 2,675 | 3,097 | -14% | 3,281 |
| Allotments | | | | |
| Personnel | 21,137 | 20,324 | 4% | 18,677 |
| Other | 27,134 | 24,992 | 9% | 21,263 |
| Transfer Payments | 4,055 | 4,359 | -7% | 3,993 |
| Total Allotments | 52,326 | 49,675 | 5% | 43,933 |

Note:

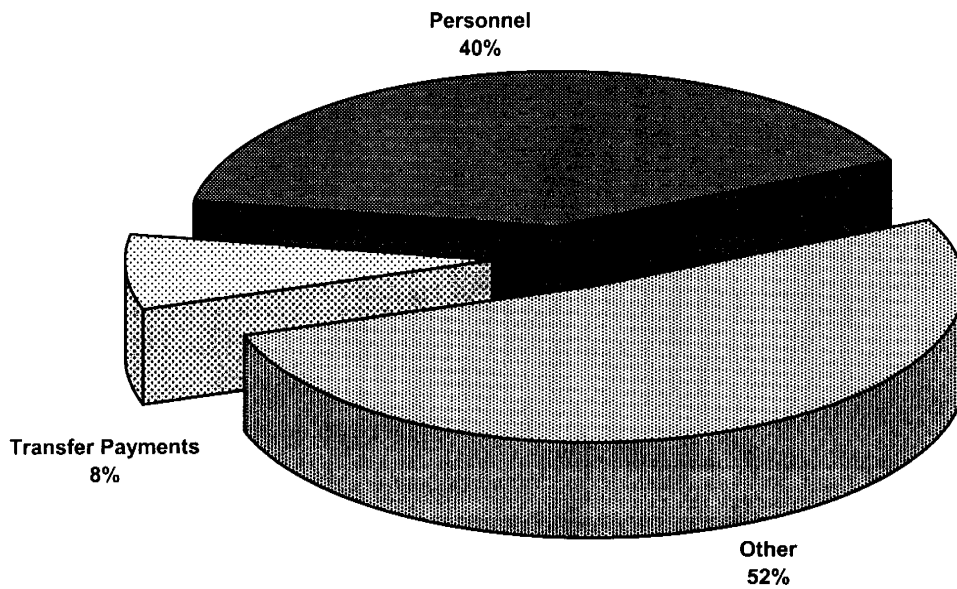
Restated 2007-08 Actual and 2008-09 Forecast to be consistent with the 2009-10 Estimate presentation.

VOTE 08
DEPARTMENT OF JUSTICE

2009-10 Estimate
Distribution of O&M Expenditures by Program



2009-10 Estimate
Distribution of O&M Expenditures by Allotment



JUSTICE

MANAGEMENT SERVICES

PROGRAM OBJECTIVES

- To assist and support appropriate and consistent departmental policy and program delivery through the provision of planning, analysis, information and communications, as well as financial, human, and physical resource management to program branches.

| O&M EXPENDITURES (\$000s) | 2009-10 ESTIMATE | 2008-09 FORECAST | % CHANGE | 2007-08 ACTUAL |
|----------------------------------|---------------------|---------------------|-------------|-------------------|
| Activity | | | | |
| Management Services | 2,390 | 2,428 | -2% | 2,301 |
| Total Management Services | 2,390 | 2,428 | -2% | 2,301 |
| Allotments | | | | |
| Personnel | 2,102 | 1,947 | 8% | 1,935 |
| Other | 288 | 481 | -40% | 366 |
| Transfer Payments | 0 | 0 | 0% | 0 |
| Total Allotments | 2,390 | 2,428 | -2% | 2,301 |

JUSTICE

COURT SERVICES

PROGRAM OBJECTIVES

- To facilitate and enhance the integrity and efficient operation of the courts system by providing administrative, enforcement and support services to the courts and other participants in judicial processes.
- To provide family law services through the Maintenance Enforcement Program and the Family Law Information Centre.
- To provide efficient court security, civil enforcement and jury management services.

| O&M EXPENDITURES (\$000s) | 2009-10 ESTIMATE | 2008-09 FORECAST | % CHANGE | 2007-08 ACTUAL |
|--------------------------------------|-----------------------------|-----------------------------|---------------------|---------------------------|
| Activities | | | | |
| Court Administration | 794 | 795 | 0% | 786 |
| Court Operations | 3,996 | 4,260 | -6% | 3,752 |
| Sheriff | 338 | 322 | 5% | 407 |
| Maintenance Enforcement | 504 | 496 | 2% | 491 |
| Witness Administration | 138 | 137 | 1% | 96 |
| Yukon Review Board | 37 | 41 | -10% | 53 |
| Total Court Services | 5,807 | 6,051 | -4% | 5,585 |
| Allotments | | | | |
| Personnel | 4,352 | 4,545 | -4% | 3,906 |
| Other | 1,455 | 1,506 | -3% | 1,679 |
| Transfer Payments | 0 | 0 | 0% | 0 |
| Total Allotments | 5,807 | 6,051 | -4% | 5,585 |

JUSTICE

COURT SERVICES

STATISTICS

| | 2009-10 ESTIMATE | 2008-09 FORECAST | % CHANGE | 2007-08 ACTUAL |
|--|---------------------|---------------------|-------------|-------------------|
| Supreme Court | | | | |
| Civil Files Opened (#) | 520 | 520 | 0% | 462 |
| Civil Documents Filed (#) | 7,300 | 7,300 | 0% | 7,042 |
| Summary Conviction Appeals (#)* | 10 | 10 | 0% | 10 |
| Court of Appeal | | | | |
| Files Opened (#) | 25 | 25 | 0% | 26 |
| Appeal Documents Filed (#) | 350 | 350 | 0% | 433 |
| Federal Court of Canada Files | | | | |
| Files Opened (#) | 5 | 5 | 0% | 0 |
| Federal Documents Filed (#) | 40 | 40 | 0% | 27 |
| Territorial Court | | | | |
| Civil Files Opened (#) | 160 | 160 | 0% | 138 |
| Civil Documents Filed (#) | 1,300 | 1,300 | 0% | 1,177 |
| Adult Charges Laid (#) | 4,200 | 4,200 | 0% | 3,776 |
| Young Offender Charges Laid (#) | 550 | 550 | 0% | 585 |
| S.C.O.T.** Tickets (Adult and Youth) | 3,800 | 3,500 | 9% | 2,290 |
| Territorial Applications | 110 | 100 | 10% | 80 |
| Small Claims Court | | | | |
| Files Opened (#) | 200 | 200 | 0% | 159 |
| Documents Filed (#) | 2,000 | 2,000 | 0% | 1,782 |
| Witness Administration | | | | |
| Witnesses (#) | 550 | 550 | 0% | 528 |
| Maintenance Enforcement Program | | | | |
| Files Opened (#) | 100 | 100 | 0% | 100 |
| Files Active (#) | 550 | 550 | 0% | 552 |
| Sheriff | | | | |
| Documents Served (#) | 500 | 500 | 0% | 53 |
| Seizures of Goods and Chattels (#) | 125 | 125 | 0% | 442 |
| Judge and Jury Trials (#) | 4 | 3 | 33% | 2 |
| Jurors Served (#) | 1,600 | 1,200 | 33% | 837 |

* Included in Total Civil Files opened.

** Summary Conviction Ordinance Tickets.

JUSTICE

LEGAL SERVICES

PROGRAM OBJECTIVES

- To ensure that the Minister of Justice and Cabinet receive timely and effective legal advice.
- To ensure that a comprehensive range of legal services is provided to government departments, including representation before all courts and tribunals in civil and criminal matters, legislative drafting in both official languages and advice on a wide variety of matters.
- To provide community legal support through funding to the Yukon Legal Services Society, the Aboriginal Courtworker Program, and the Yukon Public Legal Education Association.

| O&M EXPENDITURES (\$000s) | 2009-10 ESTIMATE | 2008-09 FORECAST | % CHANGE | 2007-08 ACTUAL |
|---|-----------------------------|-----------------------------|---------------------|---------------------------|
| Activities | | | | |
| Program Director | 651 | 465 | 40% | 383 |
| Solicitors Branch | 1,420 | 1,374 | 3% | 1,060 |
| Natural Resources and Environmental Law | 382 | 424 | -10% | 324 |
| Legislative Counsel | 735 | 583 | 26% | 451 |
| Litigation Costs/Judgements | 6 | 46 | -87% | 13 |
| Outside Counsel | 74 | 124 | -40% | 436 |
| Community Legal Support | 1,998 | 2,098 | -5% | 2,039 |
| Total Legal Services | 5,266 | 5,114 | 3% | 4,706 |
| Allotments | | | | |
| Personnel | 3,049 | 2,657 | 15% | 2,054 |
| Other | 219 | 359 | -39% | 617 |
| Transfer Payments | 1,998 | 2,098 | -5% | 2,035 |
| Total Allotments | 5,266 | 5,114 | 3% | 4,706 |

JUSTICE

REGULATORY SERVICES

PROGRAM OBJECTIVES

- To provide estate management services through the Office of the Public Guardian and Trustee to incapable adults, minor children and missing persons.
- To act as the Official Children's Guardian and retain Child Advocates as necessary.
- To act as court-appointed guardian for minor children's estates, incapable adults and investigate allegations of financial abuse of vulnerable adults.
- To maintain and enhance efficient Land Titles Office in Yukon.
- To provide funds for the operation of the Yukon Utilities Board as provided for in the *Public Utilities Act*.
- To provide funds to the Yukon Workers' Compensation Health and Safety Board to support the provision of mine safety services.

| O&M EXPENDITURES (\$000s) | 2009-10 ESTIMATE | 2008-09 FORECAST | % CHANGE | 2007-08 ACTUAL |
|----------------------------------|---------------------|---------------------|-------------|-------------------|
| Activities | | | | |
| Occupational Health and Safety | 330 | 330 | 0% | 330 |
| Public Guardian and Trustee | 477 | 437 | 9% | 402 |
| Land Titles | 474 | 436 | 9% | 436 |
| Yukon Utilities Board | 180 | 180 | 0% | 169 |
| Total Regulatory Services | 1,461 | 1,383 | 6% | 1,337 |
| Allotments | | | | |
| Personnel | 812 | 763 | 6% | 760 |
| Other | 319 | 290 | 10% | 248 |
| Transfer Payments | 330 | 330 | 0% | 329 |
| Total Allotments | 1,461 | 1,383 | 6% | 1,337 |

JUSTICE

REGULATORY SERVICES Public Guardian and Trustee

STATISTICS

- To protect the legal rights and financial interests of children.
- To act as guardian of last resort for adults who require financial and personal decision making.
- To administer the estates of deceased and missing persons where there is no-one else to do so.
- To investigate financial abuse on referral from a Designated Agency.

| | 2009-10 ESTIMATE | 2008-09 FORECAST | % CHANGE | 2007-08 ACTUAL |
|--|---------------------|---------------------|-------------|-------------------|
| Missing Persons (#) | 0 | 0 | 0% | 0 |
| Minor Children (#) | 30 | 30 | 0% | 39 |
| Deceased Assists (#) | 2 | 2 | 0% | 1 |
| Estate Files Opened in Period (#) | 5 | 5 | 0% | 8 |
| Total Estate Files Open (#)** | 20 | 30 | -33% | 33 |
| Official Guardian Files (#) | 40 | 40 | 0% | 55 |
| Private Guardianship Applications (#)* | 5 | 5 | 0% | 1 |
| Guardianship and Pending Applications (#)* | 15 | 15 | 0% | 11 |
| Financial Abuse (#)* | 5 | 5 | 0% | 0 |
| Temporary Guardianship Applications (#)* | 5 | 5 | 0% | 1 |
| Litigation Guardianship (#) | 1 | 1 | 0% | 1 |
| Statutory Guardianship (#) | 5 | 5 | 0% | 3 |
| Public Guardian and Trustee Fees (\$) | 40,000 | 40,000 | 0% | 19,839 |
| Funds in Trust at March 31, 2008 | | | | |
| Savings (\$) | 484,546 | | | |
| Guaranteed Investment Certificates (\$) | 72,807 | | | |

* Some files include more than one type of application.

** "Estate Files Opened in Period" included in "Total Estate Files Open".

JUSTICE

REGULATORY SERVICES Land Titles

STATISTICS

- To ensure validity of documents and acceptance for registration and to provide a guaranteed, accurate title of land and any interests registered against it under the Torrens System of Land.
- To ensure the integrity of the titles, all documents and survey plans are examined and registered in the Land Titles Office.

| | 2009-10 ESTIMATE | 2008-09 FORECAST | % CHANGE | 2007-08 ACTUAL |
|---|---------------------|---------------------|-------------|-------------------|
| Land Titles Registered (#) | 1,550 | 1,550 | 0% | 1,498 |
| Condominium Titles Registered (#) | 275 | 260 | 6% | 254 |
| Road Titles Registered (#) | 10 | 10 | 0% | 16 |
| Survey Plans Registered - Land (#) | 115 | 110 | 5% | 120 |
| Condominium Plans Registered (#) | 20 | 15 | 33% | 13 |
| Transfers Registered (#) * | 1,650 | 1,600 | 3% | 1,538 |
| Mortgages Registered (#) | 1,750 | 1,700 | 3% | 1,632 |
| Caveats Registered (#) | 140 | 135 | 4% | 128 |
| Miscellaneous Documents Registered (#) ** | 2,500 | 2,400 | 4% | 2,337 |
| Total Documents Registered (#) | 8,010 | 7,780 | 3% | 7,536 |
| Total Current Active Files (#) | 27,170 | 26,746 | 2% | 26,361 |
| Total Current Survey Plans (#) | 5,925 | 5,790 | 2% | 5,664 |
| Parcel Files Created (#) | 325 | 300 | 8% | 248 |
| Condominium Files Created (#) | 100 | 85 | 18% | 67 |
| Certificates of Search (#) *** | 8,200 | 8,000 | 3% | 7,910 |
| General Registry Certificates (#) | 2,750 | 2,700 | 2% | 2,607 |
| Documents Photocopied (#) **** | 51,000 | 50,000 | 2% | 49,514 |
| Documents Printed (#) **** | 28,000 | 26,000 | 8% | 25,057 |

* # of Transfers registered also consist of Notifications, Consolidations, Enlargements, Surviving Joint Tenants, etc.

** # of Miscellaneous documents registered consist of Discharges, Name Changes, Affidavits, Writs of Seizure and Sale, etc.

*** Certified True Copies of Certificates of Title.

**** Original and Duplicate Titles, Notices, Certificates, Reports, etc.

JUSTICE

CORRECTIONAL SERVICES

PROGRAM OBJECTIVES

- To provide high-quality correctional programs and services that hold offenders accountable while encouraging healing and successful reintegration into their community.

| O&M EXPENDITURES (\$000s) | 2009-10 ESTIMATE | 2008-09 FORECAST | % CHANGE | 2007-08 ACTUAL |
|------------------------------------|---------------------|---------------------|-------------|-------------------|
| Activities | | | | |
| Program Director | 452 | 620 | -27% | 447 |
| Community Corrections | 1,391 | 1,381 | 1% | 1,359 |
| Institutional Facilities | 7,049 | 6,741 | 5% | 6,430 |
| Community Residential Centre | 420 | 420 | 0% | 411 |
| Family Violence Prevention Unit | 573 | 641 | -11% | 636 |
| Community Wellness Court | 575 | 411 | 40% | 339 |
| Total Correctional Services | 10,460 | 10,214 | 2% | 9,622 |
| Allotments | | | | |
| Personnel | 7,862 | 7,708 | 2% | 7,467 |
| Other | 2,178 | 1,901 | 15% | 1,744 |
| Transfer Payments | 420 | 605 | -31% | 411 |
| Total Allotments | 10,460 | 10,214 | 2% | 9,622 |

JUSTICE

CORRECTIONAL SERVICES Community Corrections

STATISTICS

- Community Corrections administers community based corrections programs. These programs enable the courts to consider a range of alternatives to imprisonment in the sentencing process. They are designed primarily for low risk offenders who present minimal danger to the public at the time of sentencing, or for offenders for whom it has been determined risk can be managed in a community setting.

| | 2009-10 ESTIMATE | 2008-09 FORECAST | % CHANGE | 2007-08 ACTUAL |
|------------------------------|---------------------|---------------------|-------------|-------------------|
| Probation | | | | |
| Average Offender Count (#) * | 548 | 503 | 9% | 460 |
| New Admissions (#) | 1,181 | 1,074 | 10% | 976 |
| Pre-Sentence Reports (#) ** | 475 | 474 | 0% | 482 |
| Fine Option Program (#) | 20 | 20 | 0% | 5 |
| Conditional Sentences (#) | 134 | 112 | 20% | 81 |

* Based on average monthly counts.

** Includes both Pre-Sentence and Bail Supervision Reports (court driven).

JUSTICE

CORRECTIONAL SERVICES Institutional Facilities Whitehorse Correctional Centre

STATISTICS

- The Whitehorse Correctional Centre is a medium security correctional facility for adult men and women. The centre accommodates inmates serving sentences of less than two years.

| | 2009-10 ESTIMATE | 2008-09 FORECAST | % CHANGE | 2007-08 ACTUAL |
|---|---------------------|---------------------|-------------|-------------------|
| Yukon Adults Average Daily Inmate Cost | | | | |
| Daily Costs (\$) | 240 | 247 | -3% | 265 |
| Total Days Stay (#) | 28,500 | 27,000 | 6% | 25,491 |
| Average Offenders on Register and Actual, by Inmate Status | | | | |
| On Register (#) | 78 | 74 | 5% | 70 |
| Sentenced (#) | 31 | 30 | 3% | 27 |
| Remand (#) | 47 | 44 | 7% | 43 |
| Total Admissions | | | | |
| Sentenced Admissions (#) | 250 | 240 | 4% | 229 |
| Remand Admissions (#) | 485 | 460 | 5% | 449 |

JUSTICE

CORRECTIONAL SERVICES Spousal Abuse Program

STATISTICS

- Individual and group counselling and support services are provided for perpetrators of spousal abuse. Men and women undergo an assessment process and are then provided services as outlined in the case plan and assessment.
- The program is a court driven treatment program, therefore the numbers are directly influenced by disclosures, charges and sentencing practices.

| | 2009-10 ESTIMATE | 2008-09 FORECAST | % CHANGE | 2007-08 ACTUAL |
|--|---------------------|---------------------|-------------|-------------------|
| New male clients | 50 | 55 | -9% | 44 |
| Male client carry over | 60 | 102 | -41% | 102 |
| Total | 110 | 157 | -30% | 146 |
| New Female clients | 30 | 38 | -21% | 30 |
| Female client carry over | 15 | 34 | -56% | 34 |
| Total | 45 | 72 | -38% | 64 |
| Number of men's group sessions | 150 | 80 | 88% | 80 |
| Number of women's group sessions | 88 | 40 | 120% | 34 |
| Court or Parole Referrals (#) | 80 | 63 | 27% | 50 |
| Training to Other Service Providers - in hours (#) | 72 | 75 | -4% | 72 |

2007-08 Assessments by Community

| | | | |
|-----------------|---|---------------|-----------|
| Atlin, B. C. | 0 | Mayo | 0 |
| Beaver Creek | 0 | Old Crow | 2 |
| Burwash | 1 | Pelly/Stewart | 1 |
| Carcross | 9 | Ross River | 2 |
| Carmacks | 3 | Teslin | 5 |
| Dawson City | 1 | Lower Post | 0 |
| Haines Junction | 0 | Whitehorse | 49 |
| Faro | 2 | Watson Lake | 2 |
| | | Total | 77 |

Number of Women's Group sessions has increased and is estimated to increase due to an additional group component being held in an outside community.

JUSTICE

CORRECTIONAL SERVICES Sexual Offender Risk Management Program

STATISTICS

- The Sexual Offender Risk Management Program is a comprehensive approach to treating those with sexual offending behavior. It is a cognitive behavioral treatment program based on internationally recognized best practices.

| | 2009-10 ESTIMATE | 2008-09 FORECAST | % CHANGE | 2007-08 ACTUAL |
|-------------------------------------|---------------------|---------------------|-------------|-------------------|
| New clients (#) | 15 | 12 | 25% | 5 |
| Carry Forward Male clients (#) | 20 | 17 | 18% | 16 |
| Total | 35 | 29 | 21% | 21 |
| Community Assessments (#) * | 5 | 5 | 0% | 3 |
| Community Visits (#) | 5 | 5 | 0% | 3 |
| Number of Group Sessions (#) | 30 | 20 | 50% | 41 |
| Number of Psychological Assessments | 25 | 25 | 0% | 29 |

2007-08 Assessments by Community

| | |
|-----------------|----------|
| Atlin, B. C. | 0 |
| Burwash | 0 |
| Carcross/Tagish | 0 |
| Carmacks | 0 |
| Dawson City | 2 |
| Haines Junction | 0 |
| Mayo | 0 |
| Old Crow | 0 |
| Pelly/Stewart | 0 |
| Ross River | 0 |
| Teslin | 0 |
| Watson Lake | 1 |
| Total | 3 |

* All assessments are court driven.

JUSTICE

COMMUNITY JUSTICE AND PUBLIC SAFETY DIVISION

PROGRAM OBJECTIVES

- To provide leadership to the branches of the Community Justice and Public Safety Division.
- To fundamentally change the operation of the correctional system – including the correctional centre – so that the Department of Justice, First Nations and other service providers are better able to deliver high-quality correctional programs.
- To maintain and support a worker advocate program that assists injured workers under the *Workers' Compensation Act*.
- To investigate all sudden and unnatural deaths to clarify the facts, focus attention on preventable deaths, and protect public health and safety.

| O&M EXPENDITURES (\$000s) | 2009-10 ESTIMATE | 2008-09 FORECAST | % CHANGE | 2007-08 ACTUAL |
|---|---------------------|---------------------|-------------|-------------------|
| Activities | | | | |
| Assistant Deputy Minister's Office | 1,181 | 1,253 | -6% | 1,132 |
| Worker Advocate | 354 | 412 | -14% | 331 |
| Chief Coroner | 269 | 252 | 7% | 251 |
| Total Community Justice and Public Safety Division | 1,804 | 1,917 | -6% | 1,714 |
| Allotments | | | | |
| Personnel | 1,354 | 1,250 | 8% | 1,188 |
| Other | 321 | 538 | -40% | 423 |
| Transfer Payments | 129 | 129 | 0% | 103 |
| Total Allotments | 1,804 | 1,917 | -6% | 1,714 |

JUSTICE

COMMUNITY JUSTICE AND PUBLIC SAFETY DIVISION Chief Coroner

STATISTICS

- To investigate, for the public, unexpected and sudden deaths, and to recommend changes to prevent similar deaths.
- To focus attention on preventable deaths and the public's health and safety.

| | 2009-10 ESTIMATE | 2008-09 FORECAST | % CHANGE | 2007-08 ACTUAL |
|----------------------------|---------------------|---------------------|-------------|-------------------|
| Case Work (#) | | | | |
| Coroner's Cases | 55 | 57 | -4% | 56 |
| Autopsies | 32 | 34 | -6% | 33 |
| Inquests | 1 | 0 | 100% | 0 |
| Judgements of Inquiry | 6 | 6 | 0% | 7 |
| Manner of Death (#) | | | | |
| Natural | 32 | 34 | -6% | 31 |
| Suicide | 4 | 4 | 0% | 4 |
| Homicide | 1 | 1 | 0% | 4 |
| Accident | 17 | 16 | 6% | 15 |
| Undetermined | 1 | 2 | -50% | 2 |
| Total Coroner's Cases | 55 | 57 | -4% | 56 |

JUSTICE

HUMAN RIGHTS

PROGRAM OBJECTIVE

- To provide funds for the operation of the Human Rights Commission and the Panel of Adjudicators as provided for in the *Human Rights Act*.

| O&M EXPENDITURES (\$000s) | 2009-10 ESTIMATE | 2008-09 FORECAST | % CHANGE | 2007-08 ACTUAL |
|---------------------------------|---------------------|---------------------|-------------|-------------------|
| Activities | | | | |
| Human Rights Commission | 478 | 478 | 0% | 575 |
| Human Rights Adjudication Board | 38 | 38 | 0% | 120 |
| Total Human Rights | 516 | 516 | 0% | 695 |
| Allotments | | | | |
| Personnel | 0 | 0 | 0% | 0 |
| Other | 38 | 38 | 0% | 120 |
| Transfer Payments | 478 | 478 | 0% | 575 |
| Total Allotments | 516 | 516 | 0% | 695 |

JUSTICE

VICTIM SERVICES AND COMMUNITY JUSTICE

PROGRAM OBJECTIVES

- To contribute to public safety by working collaboratively with First Nations, other government departments and non-government organizations to:
 - offer support to victims and families; and
 - build capacity in communities to prevent crime and foster healthy and safe communities.

| O&M EXPENDITURES (\$000s) | 2009-10 ESTIMATE | 2008-09 FORECAST | % CHANGE | 2007-08 ACTUAL |
|--|---------------------|---------------------|-------------|-------------------|
| Activities | | | | |
| Program Director | 426 | 670 | -36% | 611 |
| Victim Services | 851 | 943 | -10% | 1,095 |
| Community Justice Projects | 664 | 725 | -8% | 489 |
| Total Victim Services and Community Justice | 1,941 | 2,338 | -17% | 2,195 |
| Allotments | | | | |
| Personnel | 1,101 | 1,159 | -5% | 1,136 |
| Other | 197 | 517 | -62% | 557 |
| Transfer Payments | 643 | 662 | -3% | 502 |
| Total Allotments | 1,941 | 2,338 | -17% | 2,195 |

JUSTICE

VICTIM SERVICES AND COMMUNITY JUSTICE Victim Services

STATISTICS

- In cooperation with the RCMP, the program offers services to ensure victimized persons in the Yukon receive support, information, advocacy, and appropriate referral to specialized agencies in order to limit the effect of their crisis and return their life to a desired degree of stability.

| | 2009-10 ESTIMATE | 2008-09 FORECAST | % CHANGE | 2007-08 ACTUAL |
|--------------------------------|---------------------|---------------------|-------------|-------------------|
| File Profile (#) | | | | |
| Case Files Opened | 369 | 285 | 29% | 361 |
| Files Carried Over | 325 | 395 | -18% | 181 |
| Active Parole Files | 2 | 1 | 100% | 1 |
| Short Service Contracts | 60 | 55 | 9% | 111 |
| Total Number of File Contacts | 756 | 736 | 3% | 654 |
| Client Profile (#) | | | | |
| Total Number of Clients Served | 756 | 736 | 3% | 596 |
| Female | 85% | 93% | n/a | 90% |
| Male | 15% | 7% | n/a | 10% |
| First Nations | 65% | 51% | n/a | 54% |
| Non-First Nations | 35% | 49% | n/a | 46% |
| Case Profile (#) | | | | |
| Family Violence Prevention Act | 3% | 3% | n/a | 2% |
| Spousal Assaults (All levels) | 70% | 70% | n/a | 69% |
| Sexual Assaults | 23% | 23% | n/a | 6% |
| Other (Homicide, Kidnapping) | 1% | 1% | n/a | 1% |
| Information | 3% | 3% | n/a | 22% |
| Community Outreach (#) | | | | |
| Whitehorse Files | 589 | 569 | 4% | 411 |
| Watson Lake (Sub Office) | 70 | 50 | 40% | 71 |
| Dawson City | 24 | 24 | 0% | 41 |
| Other Yukon Community Files | 85 | 85 | 0% | 75 |
| Outside Yukon Files | 8 | 8 | 0% | 8 |
| Partner Assessments | 45 | 45 | 0% | 42 |

JUSTICE

VICTIM SERVICES AND COMMUNITY JUSTICE Women's Program

STATISTICS

- Programs provided for women include: the Support Group for Women in abusive relationships, Drop-In Support Group, individual counselling for victims of spousal abuse, advocacy and support services and case management with the Spousal Abuse Program.

| | 2009-10 ESTIMATE | 2008-09 FORECAST | % CHANGE | 2007-08 ACTUAL |
|--|---------------------|---------------------|-------------|-------------------|
| Client Contact: | | | | |
| New files opened | 35 | 8 | 338% | 60 |
| Files carried over ** | 50 | 50 | 0% | 42 |
| Total Client Contact | 85 | 58 | 47% | 102 |
| File Profile: | | | | |
| Spousal Assault | 60 | 50 | 20% | 64 |
| Trauma | 1 | 1 | 0% | 6 |
| Other (sexual assault, family crisis) | 24 | 7 | 243% | 0 |
| Service Provided | | | | |
| Individual Counselling (#) | 170 | 170 | 0% | 130 |
| Court Support (#) * | 0 | 0 | 0% | 15 |
| Specialized Group (#) * | 15 | 15 | 0% | 20 |
| Support Group (#) | 40 | 40 | 0% | 23 |
| Community Files | | | | |
| Whitehorse (#) | 125 | 125 | 0% | 109 |
| Other Communities (#) | 45 | 45 | 0% | 21 |
| Workshops/Presentations | 12 | 12 | 0% | 9 |
| (Teen Parent Centre, College, Communities) | | | | |

* Co-facilitating groups with other agencies, e.g., Alcohol and Drug Services, Child Abuse Treatment Centre and the RCMP.

** The files carried over numbers are high because the Women's Program offers long term support and counselling and clients are connected for several years at times.

JUSTICE

POLICING AND INVESTIGATION SERVICES

PROGRAM OBJECTIVES

- To promote public awareness, safety and respect for the law through the Safer Communities and Neighbourhoods legislation.
- To support policing needs in the Yukon, and to provide correctional investigation services.

| O&M EXPENDITURES (\$000s) | 2009-10 ESTIMATE | 2008-09 FORECAST | % CHANGE | 2007-08 ACTUAL |
|--|-----------------------------|-----------------------------|---------------------|---------------------------|
| Activities | | | | |
| Director | 193 | 24 | 704% | 0 |
| Safer Communities and Neighbourhoods | 385 | 330 | 17% | 272 |
| Police Services | 22,103 | 19,360 | 14% | 15,506 |
| Total Policing and Investigation Services | 22,681 | 19,714 | 15% | 15,778 |
| Allotments | | | | |
| Personnel | 505 | 295 | 71% | 231 |
| Other | 22,119 | 19,362 | 14% | 15,509 |
| Transfer Payments | 57 | 57 | 0% | 38 |
| Total Allotments | 22,681 | 19,714 | 15% | 15,778 |

JUSTICE

POLICING AND INVESTIGATION SERVICES

Police Services

STATISTICS

- The Royal Canadian Mounted Police (RCMP) in the Yukon ("M" Division) provides cost-shared territorial policing services to all areas and people of the Yukon under an agreement signed by the Solicitor General of Canada, the Commissioner of the Yukon and the Yukon Minister of Justice.

| | 2008 FORECAST | 2007 ACTUAL | 2006 ACTUAL |
|--------------------------------------|------------------|----------------|----------------|
| Criminal Code Offenders (#) * | | | |
| Crimes Against Persons | 1,100 | 906 | 1,170 |
| Crimes Against Property | 1,500 | 1,354 | 3,464 |
| Other Criminal Code Offences | 3,750 | 4,346 | 2,270 |
| | <u>6,350</u> | <u>6,606</u> | <u>6,904</u> |

Impaired Driving - Incidents (#) *

- The following figures include driving while impaired, refusing breath/blood tests, refusing roadside screening, driving with more than 80 mg of alcohol in 100 ml of blood, impaired driving causing bodily harm, and impaired driving causing death.

| | | | |
|------------------|------------|------------|------------|
| Impaired Driving | <u>350</u> | <u>347</u> | <u>324</u> |
|------------------|------------|------------|------------|

- * These are the total number of incidents reported by the RCMP.

JUSTICE

| REVENUES (\$000s) | 2009-10 ESTIMATE | 2008-09 FORECAST | % CHANGE | 2007-08 ACTUAL |
|---|---------------------|---------------------|-------------|-------------------|
| TAXES AND GENERAL REVENUES | | | | |
| Court Services | | | | |
| Fines - Territorial Court | 400 | 400 | 0% | 374 |
| Sheriff's Office | 20 | 20 | 0% | 37 |
| Regulatory Services | | | | |
| Public Guardian and Trustee Fees | 40 | 40 | 0% | 20 |
| Land Titles Fees | 240 | 200 | 20% | 284 |
| Total Taxes and General Revenues | 700 | 660 | 6% | 715 |
| THIRD-PARTY RECOVERIES | | | | |
| Management Services | | | | |
| Prior Years' Recoveries | 0 | 4 | -100% | 0 |
| Court Services | | | | |
| Witness Program - Videoconferencing | 4 | 4 | 0% | 2 |
| Regulatory Services | | | | |
| Public Utilities Board Hearings | 100 | 100 | 0% | 119 |
| Correctional Services | | | | |
| Outreach Worker - Province of British Columbia | 10 | 10 | 0% | 14 |
| Community Justice and Public Safety Division | | | | |
| Worker Advocate | 354 | 412 | -14% | 331 |
| Total Third-Party Recoveries | 468 | 530 | -12% | 466 |
| RECOVERIES FROM CANADA | | | | |
| Management Services | | | | |
| Prior Years' Recoveries | 0 | 30 | -100% | 48 |
| Court Services | | | | |
| Child Support Guidelines | 207 | 207 | 0% | 207 |
| Prior Years' Recoveries | 0 | 0 | 0% | 15 |

JUSTICE

| REVENUES (\$000s) | 2009-10 ESTIMATE | 2008-09 FORECAST | % CHANGE | 2007-08 ACTUAL |
|---|-----------------------------|-----------------------------|---------------------|---------------------------|
| RECOVERIES FROM CANADA (cont'd) | | | | |
| Legal Services | | | | |
| Legal Aid | 864 | 964 | -10% | 1,090 |
| Aboriginal Courtworker Program | 158 | 158 | 0% | 185 |
| Yukon Public Legal Education Association | 70 | 70 | 0% | 70 |
| Prior Years' Recoveries | 0 | 50 | -100% | 23 |
| Correctional Services | | | | |
| Exchange of Service Agreement | 30 | 30 | 0% | 27 |
| Parole Supervision | 70 | 70 | 0% | 70 |
| Prior Years' Recoveries | 0 | 220 | -100% | 156 |
| Community Justice and Public Safety Division | | | | |
| Prior Years' Recoveries | 0 | 0 | 0% | 51 |
| Victim Services and Community Justice | | | | |
| Outreach Worker | 50 | 50 | 0% | 50 |
| Counselling for Kids | 50 | 50 | 0% | 50 |
| Victim Services for Communities | 8 | 8 | 0% | 8 |
| Prior Years' Recoveries | 0 | 0 | 0% | 50 |
| Total Recoveries from Canada | 1,507 | 1,907 | -21% | 2,100 |
| TOTAL REVENUES | 2,675 | 3,097 | -14% | 3,281 |

JUSTICE

| TRANSFER PAYMENTS (\$000s) | 2009-10 ESTIMATE | 2008-09 FORECAST | % CHANGE | 2007-08 ACTUAL |
|---|-----------------------------|-----------------------------|---------------------|---------------------------|
| OTHER TRANSFER PAYMENTS | | | | |
| Legal Services | | | | |
| Yukon Legal Services Society (Legal Aid) | 1,592 | 1,660 | -4% | 1,510 |
| Aboriginal Courtworker Program | 321 | 348 | -8% | 362 |
| Yukon Public Legal Education Association | 85 | 90 | -6% | 163 |
| Regulatory Services | | | | |
| Yukon Workers' Compensation Health and Safety Board | 330 | 330 | 0% | 329 |
| Correctional Services | | | | |
| Community Residential Centre (Salvation Army) | 420 | 420 | 0% | 411 |
| Prior Years' Other Transfer Payments | 0 | 185 | -100% | 0 |
| Community Justice and Public Safety Division | | | | |
| Council of Yukon First Nations (CYFN) | 129 | 129 | 0% | 103 |
| Human Rights | | | | |
| Human Rights Commission | 478 | 478 | 0% | 575 |
| Victim Services and Community Justice | | | | |
| Youth Leadership Program | 168 | 168 | 0% | 165 |
| Community Justice Projects | 307 | 307 | 0% | 301 |
| Southern Lakes Justice Development Program - Northern Strategy | 168 | 187 | -10% | 36 |
| Policing and Investigation Services | | | | |
| RCMP Summer Student Program | 52 | 52 | 0% | 38 |
| Police Board Funding | 5 | 5 | 0% | 0 |
| TOTAL O&M Transfer Payments | 4,055 | 4,359 | -7% | 3,993 |