

# **WOMEN'S DIRECTORATE**

**VOTE 11**  
**WOMEN'S DIRECTORATE**

**MINISTER**

**Hon. M. Horne**

**A/DIRECTOR**

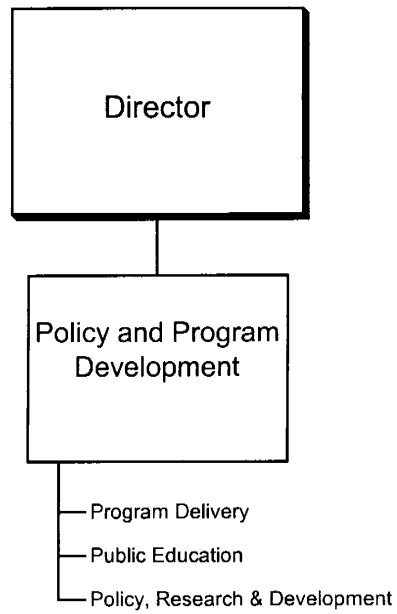
**C. Beauchemin**

**DEPARTMENTAL OBJECTIVE**

- To support the Government of Yukon's commitment to the economic, legal and social equality of women.

# WOMEN'S DIRECTORATE

## RELATIONSHIP BETWEEN ORGANIZATION AND PROGRAMS



**VOTE 11  
WOMEN'S DIRECTORATE**

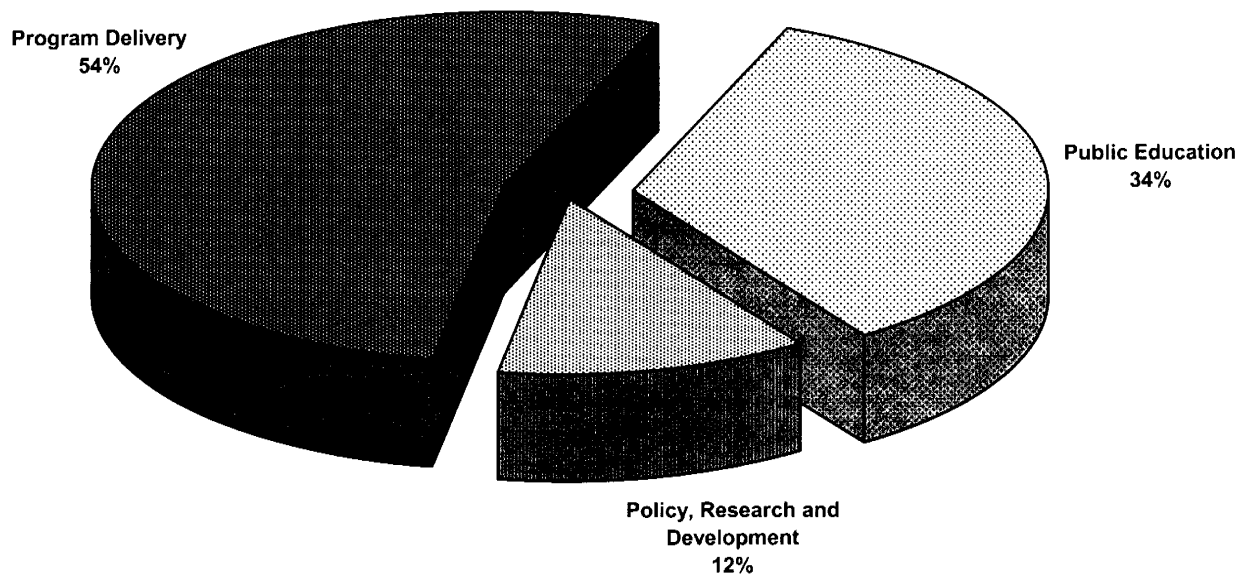
<b>FINANCIAL SUMMARY (\$000s)</b>	<b>2009-10 ESTIMATE</b>	<b>2008-09 FORECAST</b>	<b>% CHANGE</b>	<b>2007-08 ACTUAL</b>
<b>Operation and Maintenance Expenditures</b>				
Policy and Program Development	1,239	1,204	3%	1,157
<b>Total Operation and Maintenance Vote 11</b>	<b>1,239</b>	<b>1,204</b>	<b>3%</b>	<b>1,157</b>
<b>Amortization Expense</b>	<b>0</b>	<b>0</b>	<b>0%</b>	<b>0</b>
<b>Revenues</b>	<b>0</b>	<b>0</b>	<b>0%</b>	<b>0</b>
<b>Allotments</b>				
Personnel	571	551	4%	484
Other	196	281	-30%	309
Transfer Payments	472	372	27%	364
<b>Total Allotments</b>	<b>1,239</b>	<b>1,204</b>	<b>3%</b>	<b>1,157</b>

Note:

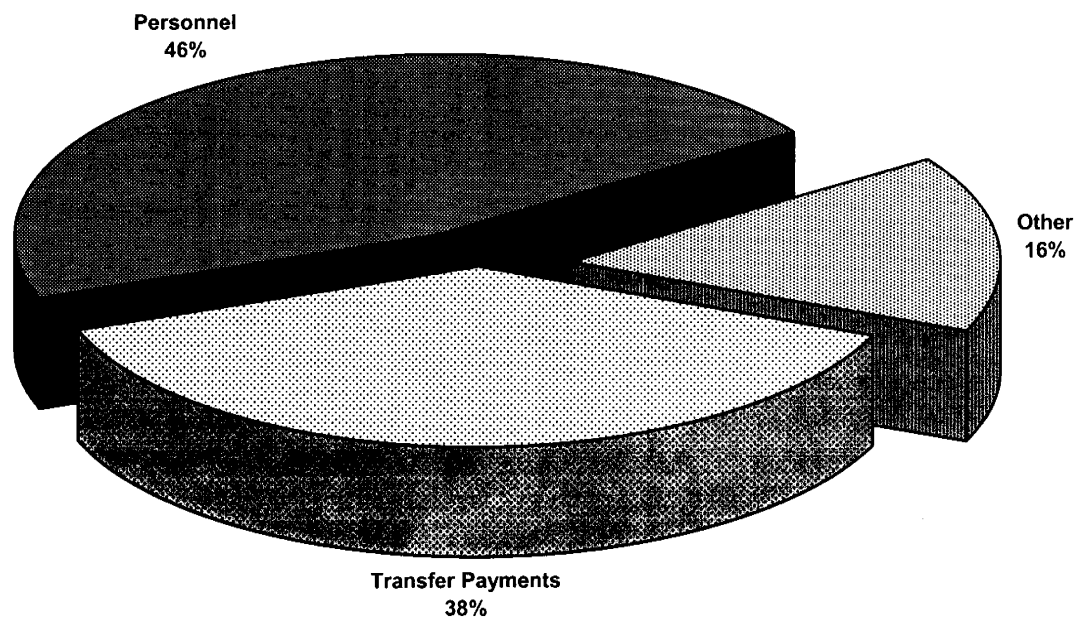
Restated 2007-08 Actual and 2008-09 Forecast to be consistent with the 2009-10 Estimate presentation.

**VOTE 11**  
**WOMEN'S DIRECTORATE**

**2009-10 Estimate**  
**Distribution of O&M Expenditures by Activity**



**2009-10 Estimate**  
**Distribution of O&M Expenditures by Allotment**



## WOMEN'S DIRECTORATE

### POLICY AND PROGRAM DEVELOPMENT

#### PROGRAM OBJECTIVES

- To provide leadership in policy research and development to ensure gender equitable outcomes in government legislation, policy, and programs.
- To promote women and girls' equality by raising awareness of women's issues through effective public education.
- To support community-based initiatives that enhance women and girls' equality.

O&M EXPENDITURES (\$000s)	2009-10 ESTIMATE	2008-09 FORECAST	% CHANGE	2007-08 ACTUAL
<b>Activities</b>				
Program Delivery	662	642	3%	580
Public Education	424	349	21%	422
Policy, Research and Development	153	213	-28%	155
<b>Total Policy and Program Development</b>	<b>1,239</b>	<b>1,204</b>	<b>3%</b>	<b>1,157</b>
<b>Allotments</b>				
Personnel	571	551	4%	484
Other	196	281	-30%	309
Transfer Payments	472	372	27%	364
<b>Total Allotments</b>	<b>1,239</b>	<b>1,204</b>	<b>3%</b>	<b>1,157</b>

## WOMEN'S DIRECTORATE

<b>TRANSFER PAYMENTS (\$000s)</b>	<b>2009-10 ESTIMATE</b>	<b>2008-09 FORECAST</b>	<b>% CHANGE</b>	<b>2007-08 ACTUAL</b>
<b>OTHER TRANSFER PAYMENTS</b>				
<b>Policy and Program Development</b>				
Victoria Faulkner Women's Centre				
- Operations	20	20	0%	20
- Women's Advocate	60	60	0%	60
Yukon Status of Women Council	12	12	0%	12
Women's Equality Fund	175	175	0%	170
Family Violence and Violence Against Women Prevention Initiatives	200	100	100%	94
Women's Community Projects	5	5	0%	5
Prior Years' Other Transfer Payments	0	0	0%	3
<b>TOTAL TRANSFER PAYMENTS</b>	<b>472</b>	<b>372</b>	<b>27%</b>	<b>364</b>