

ELECTIONS OFFICE



**VOTE 24
ELECTIONS OFFICE**

SPEAKER OF THE ASSEMBLY

Hon. T. Staffen

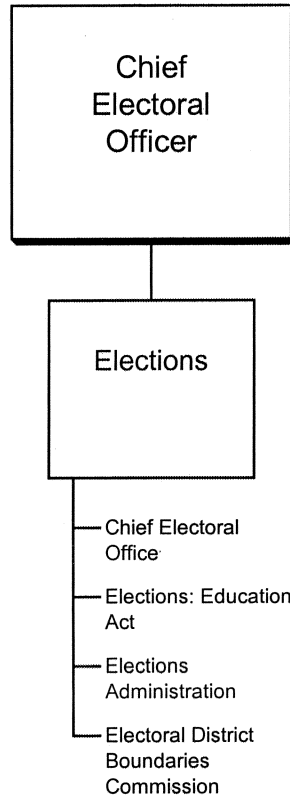
CHIEF ELECTORAL OFFICER

J. Waugh

- To manage and conduct elections of Members of the Yukon Legislative Assembly and school-governing groups.
- To provide administrative support for electoral district boundaries commissions.

ELECTIONS OFFICE

RELATIONSHIP BETWEEN ORGANIZATION AND PROGRAMS

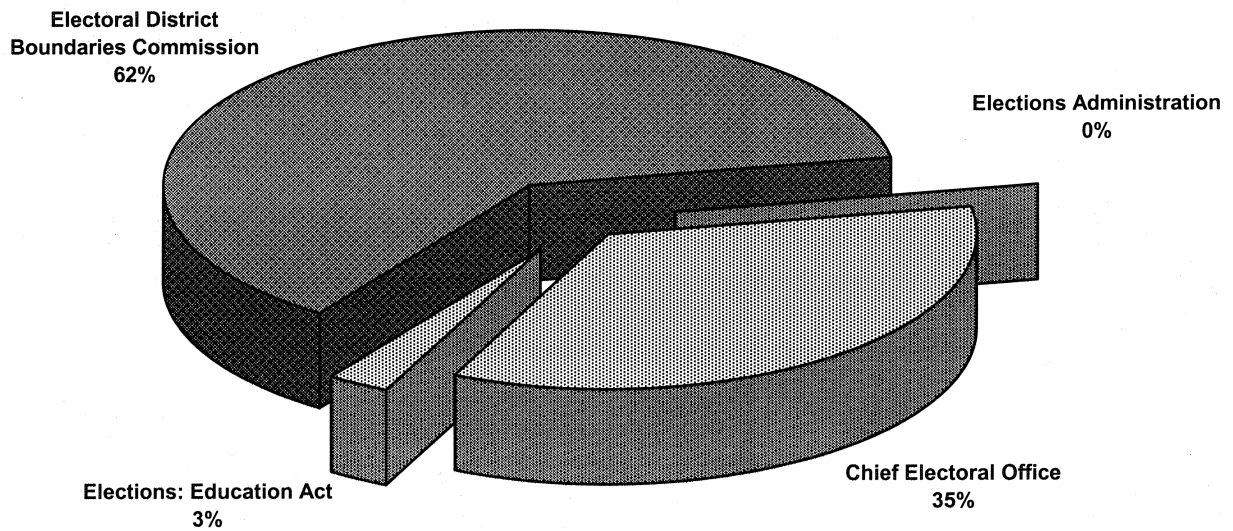


**VOTE 24
ELECTIONS OFFICE**

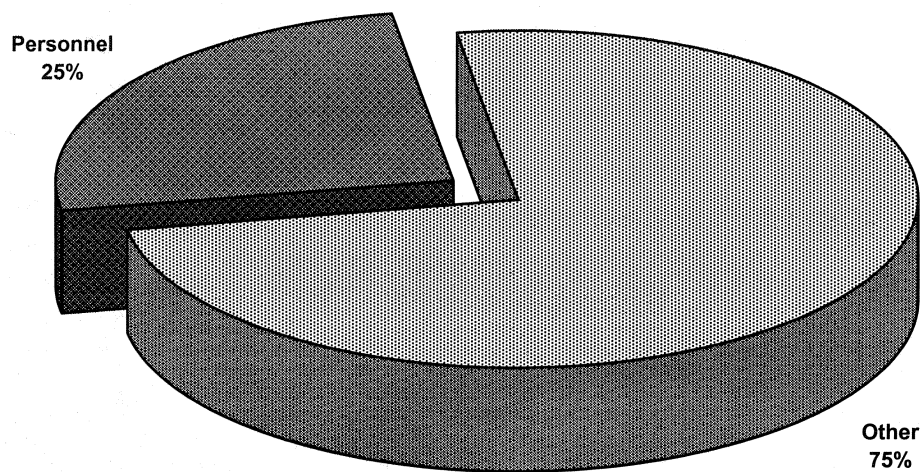
FINANCIAL SUMMARY (\$000s)	2007-08 ESTIMATE	2006-07 FORECAST	% CHANGE	2005-06 ACTUAL
Operation and Maintenance Expenditures				
Elections	435	744	-42%	255
Total Operation and Maintenance Vote 24	435	744	-42%	255
Amortization Expense	0	0	0%	0
Revenues				
Third-Party Recoveries	0	0	0%	7
Total Revenues	0	0	0%	7
Allotments				
Personnel	110	115	-4%	96
Other	325	629	-48%	159
Transfer Payments	0	0	0%	0
Total Allotments	435	744	-42%	255

**VOTE 24
ELECTIONS OFFICE**

**2007-08 Estimate
Distribution of O&M Expenditures by Activity**



**2007-08 Estimate
Distribution of O&M Expenditures by Allotment**



ELECTIONS OFFICE

ELECTIONS

PROGRAM DESCRIPTION

- Maintain the elections administrative structure in a state of readiness for the call of an election.
- Conduct by-elections and general elections of Members to the Yukon Legislative Assembly.
- Report to the Yukon Legislative Assembly on election-related matters.
- Conduct elections of members of School Councils and trustees of School Boards pursuant to the *Education Act*.
- Provide consultative services and resources regarding election administration to other agencies.
- Provide secretariat services to electoral district boundaries commission.

O&M EXPENDITURES (\$000s)	2007-08 ESTIMATE	2006-07 FORECAST	% CHANGE	2005-06 ACTUAL
Activities				
Chief Electoral Office	151	158	-4%	214
Elections: Education Act	12	64	-81%	1
Elections Administration	one dollar	522	-100%	40
Electoral District Boundaries Commission	272	0	100%	0
Total Elections	435	744	-42%	255
Allotments				
Personnel	110	115	-4%	96
Other	325	629	-48%	159
Transfer Payments	0	0	0%	0
Total Allotments	435	744	-42%	255

ELECTIONS OFFICE

REVENUES (\$000s)	2007-08 ESTIMATE	2006-07 FORECAST	% CHANGE	2005-06 ACTUAL
-------------------	---------------------	---------------------	-------------	-------------------

THIRD-PARTY RECOVERIES

Elections

Prior Years' Recoveries

TOTAL REVENUES

0	0	0%	7
0	0	0%	7