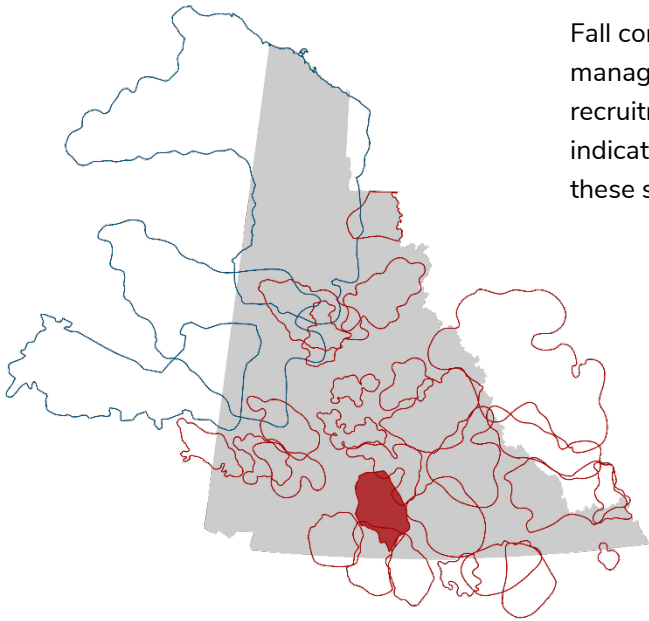




Laberge Caribou 2024 Fall Composition Survey



Caribou herds of Yukon (Laberge Highlighted)

Fall composition surveys are one of the primary monitoring tools for caribou management in the Yukon. From these surveys we get an index of calf recruitment (calves per 100 cows) and sex ratios (bulls per 100 cows), which are indicators of population trend when monitored over time. From 2011 to 2021 these surveys were conducted annually on the herd.

Summary of 2024 results

Date: 8 October 2024

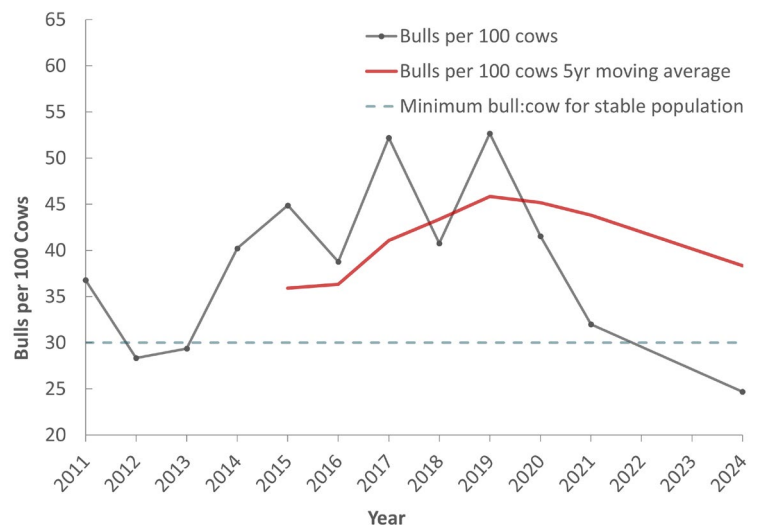
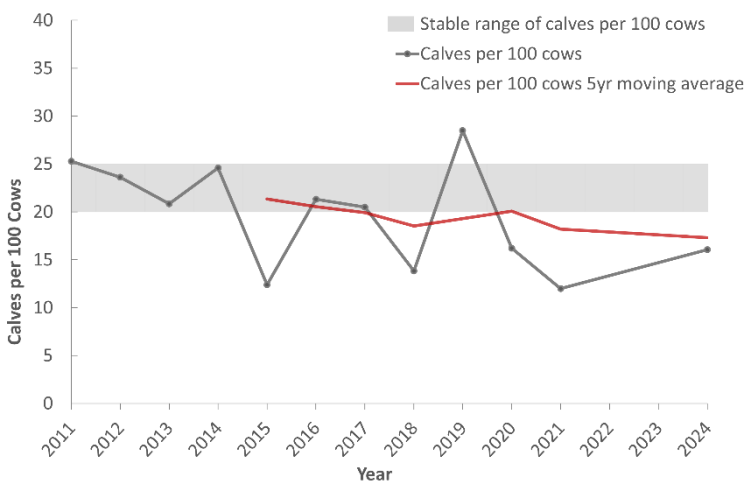
Hours flown: 3.1

No. of caribou observed: 114

Calf:Cow ratio: 16 **Bull:Cow ratio:** 25

Population trend: Decreasing

In 2019, anecdotal observations, along with composition and population surveys, indicated that the herd was stable. However, since then, there are signs that long-term trends in calf recruitment may be declining. No survey was conducted in 2022, and in 2023, the sample size of observed caribou was too small to provide reliable estimates of herd composition.

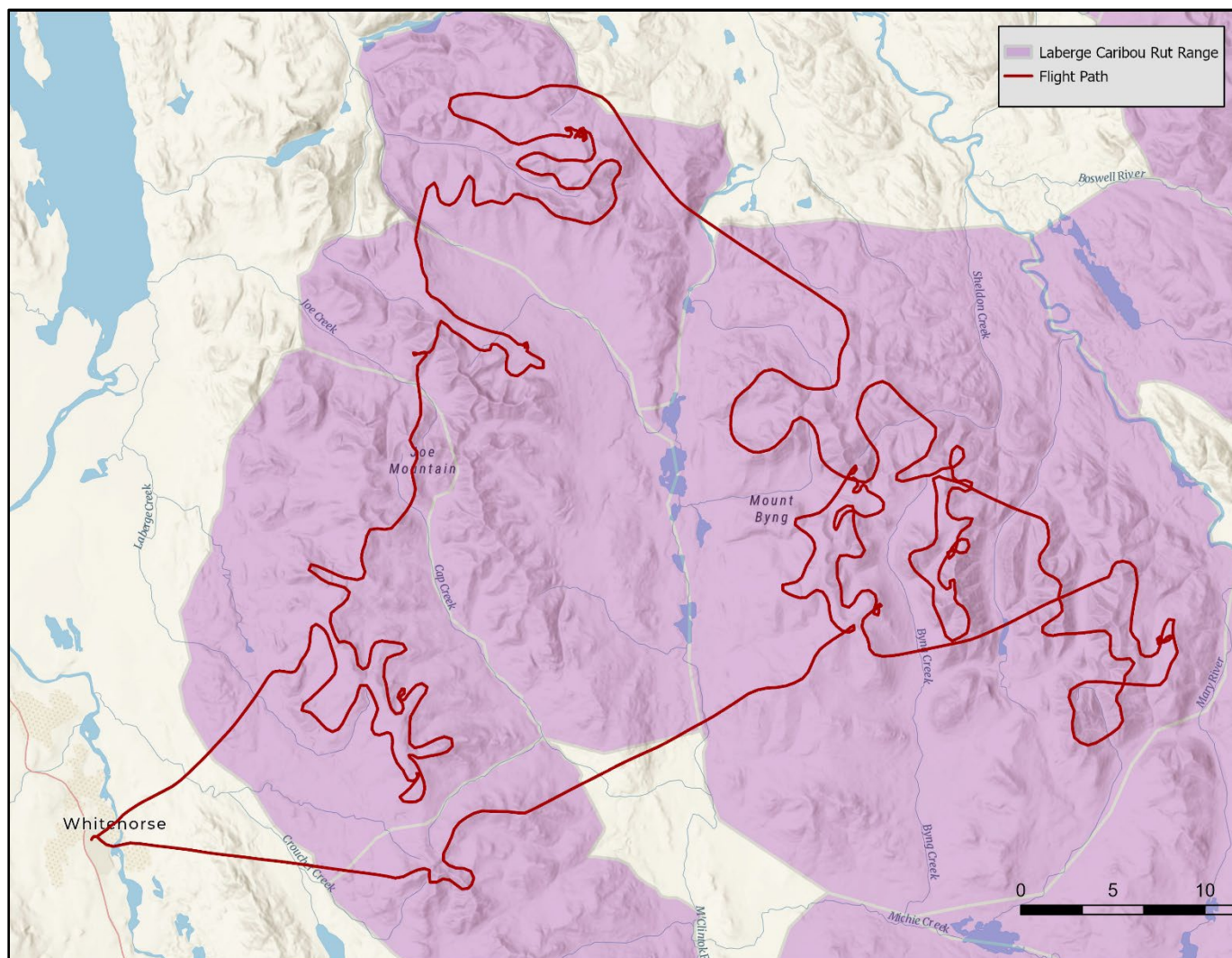


Management: The Southern Lakes Caribou Recovery Program began in 1993 as a cooperative effort to recover the Carcross, Ibex, Laberge and Atlin caribou herds from historic declines. The Southern Lakes Caribou Steering Committee recently completed and signed a Relationship Plan for Southern Lakes Caribou. For more information about the Laberge herd and to read the Relationship Plan visit yukon.ca/en/woodland-caribou or www.southernlakescaribou.com.

FOR MORE INFORMATION, PLEASE CONTACT:

Kelsey Russell, Caribou Biologist, Kelsey.Russell@yukon.ca





Map 1. Flight paths from the October 8th, 2024, Laberge caribou composition survey in the Yukon.

Acknowledgements

We extend our thanks to Adam Winters (Carcross/Tagish First Nation) for his assistance as an observer during the survey and to Tressa Clarke (Discovery Helicopters) for her excellent flying.

FOR MORE INFORMATION, PLEASE CONTACT:

Kelsey Russell, Caribou Biologist, Kelsey.Russell@yukon.ca

