



Ibex Caribou 2024 Fall Composition Survey

Fall composition surveys are one of the primary monitoring tools for caribou management in the Yukon. From these surveys we get an index of calf recruitment (calves per 100 cows) and sex ratios (bulls per 100 cows), which are indicators of population trends when monitored over time. Except for 2022, these surveys have been conducted for the Ibex herd annually since 1983.

Summary of 2024 results

Date: 3–4 October 2024

Hours flown: 12.2

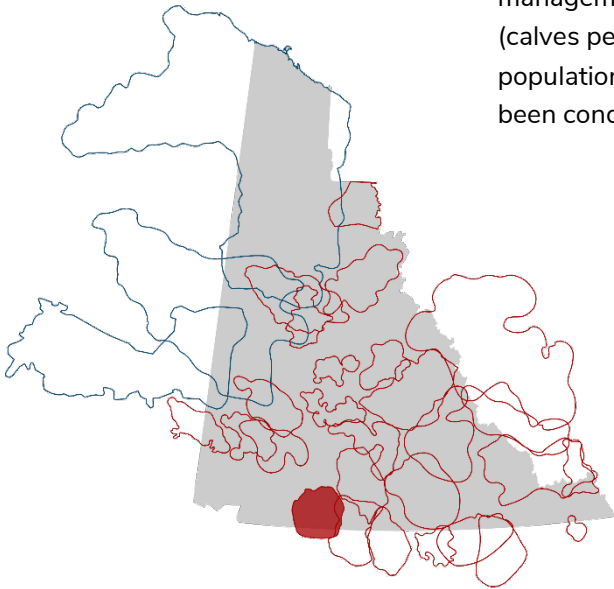
No. of caribou observed: 910

Calf:Cow ratio: 15

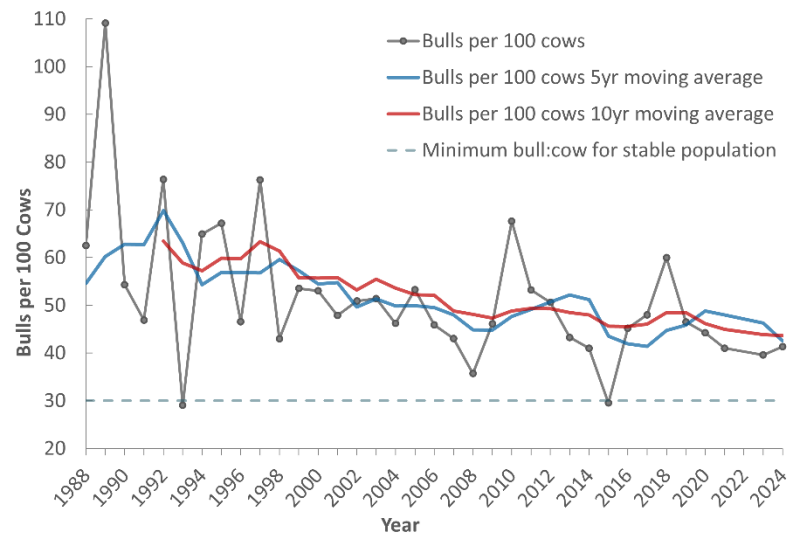
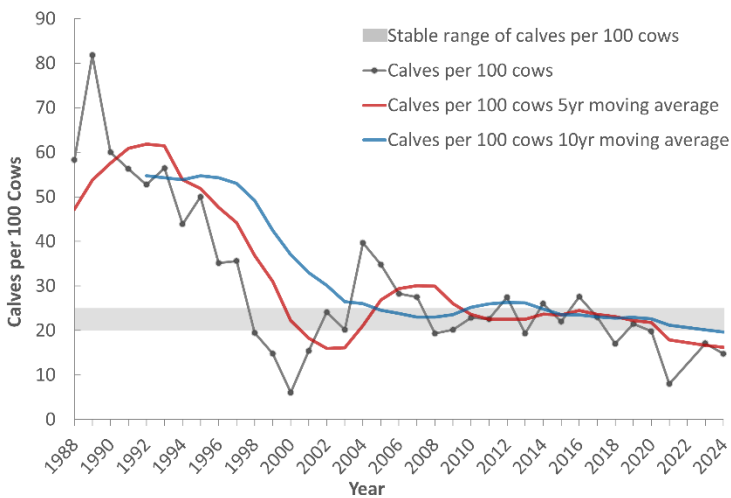
Bull:Cow ratio: 41

Population trend: Decreasing

In 2019, anecdotal observations, along with composition and population surveys, suggested the herd was increasing and expanding their range. However, since then, there are signs that long-term trends in calf recruitment may be declining. We are working to understand potential factors behind the decline.



Caribou herds of Yukon (Ibex Highlighted)



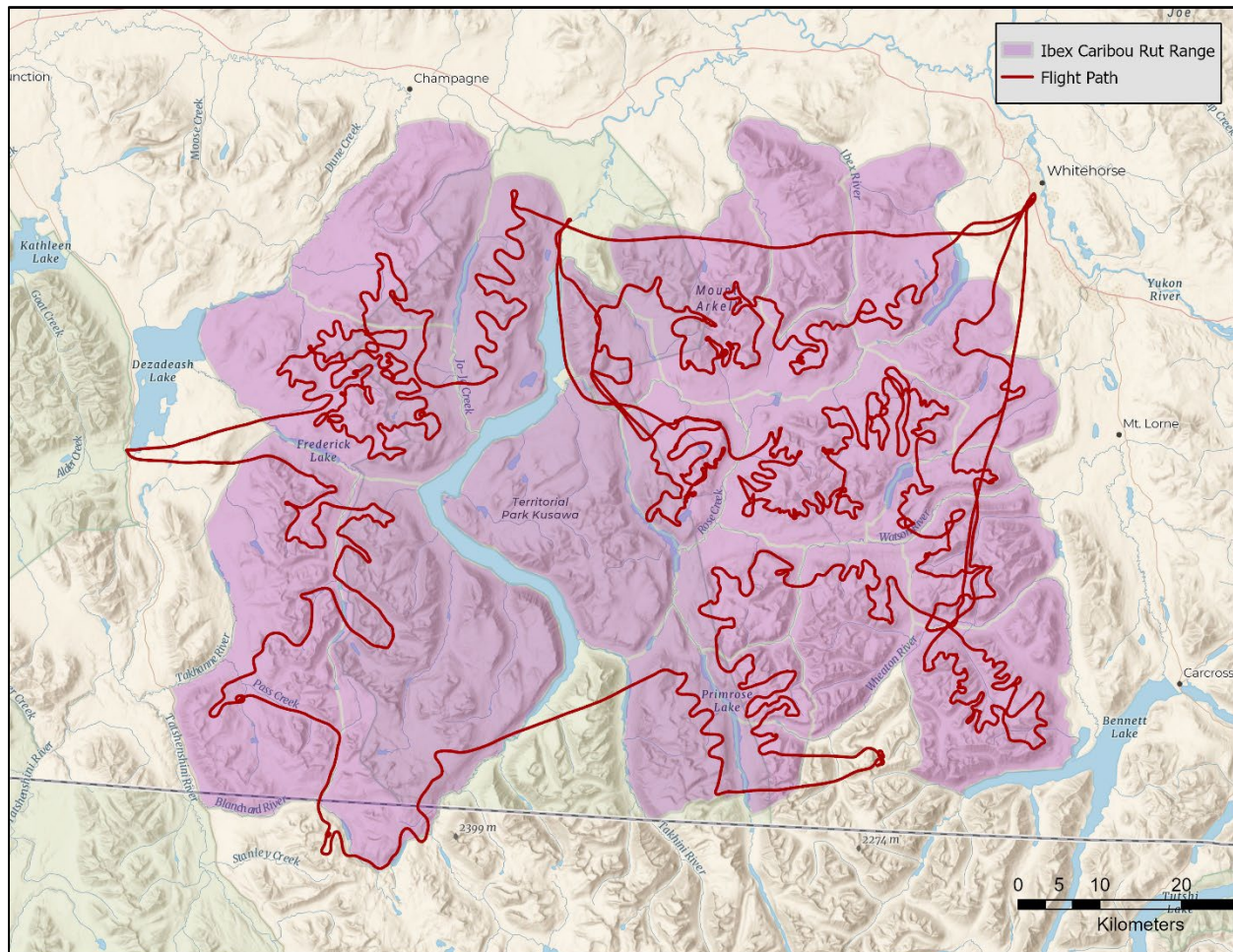
Management

The Southern Lakes Caribou Recovery Program began in 1993 as a cooperative effort to recover the Carcross, Ibex, Laberge and Atlin caribou herds from historic declines. The Southern Lakes Caribou Steering Committee recently completed and signed a Relationship Plan for Southern Lakes Caribou. For more information about the Ibex herd and to read the Relationship Plan, visit yukon.ca/en/woodland-caribou or www.southernlakescaribou.com.

FOR MORE INFORMATION, PLEASE CONTACT:

Kelsey Russell, Caribou Biologist, Kelsey.Russell@yukon.ca





Map 1. Flight paths from the October 3-4, 2024, Ibex composition survey in the Yukon.

Acknowledgements

We extend our thanks to Bruce Wilson (Kwanlin Dün First Nation) and Lars Jessup for their assistance as observers during the survey, and to Scott Smith (Capital Helicopters) for his excellent flying.

FOR MORE INFORMATION, PLEASE CONTACT:

Kelsey Russell, Caribou Biologist, Kelsey.Russell@yukon.ca

