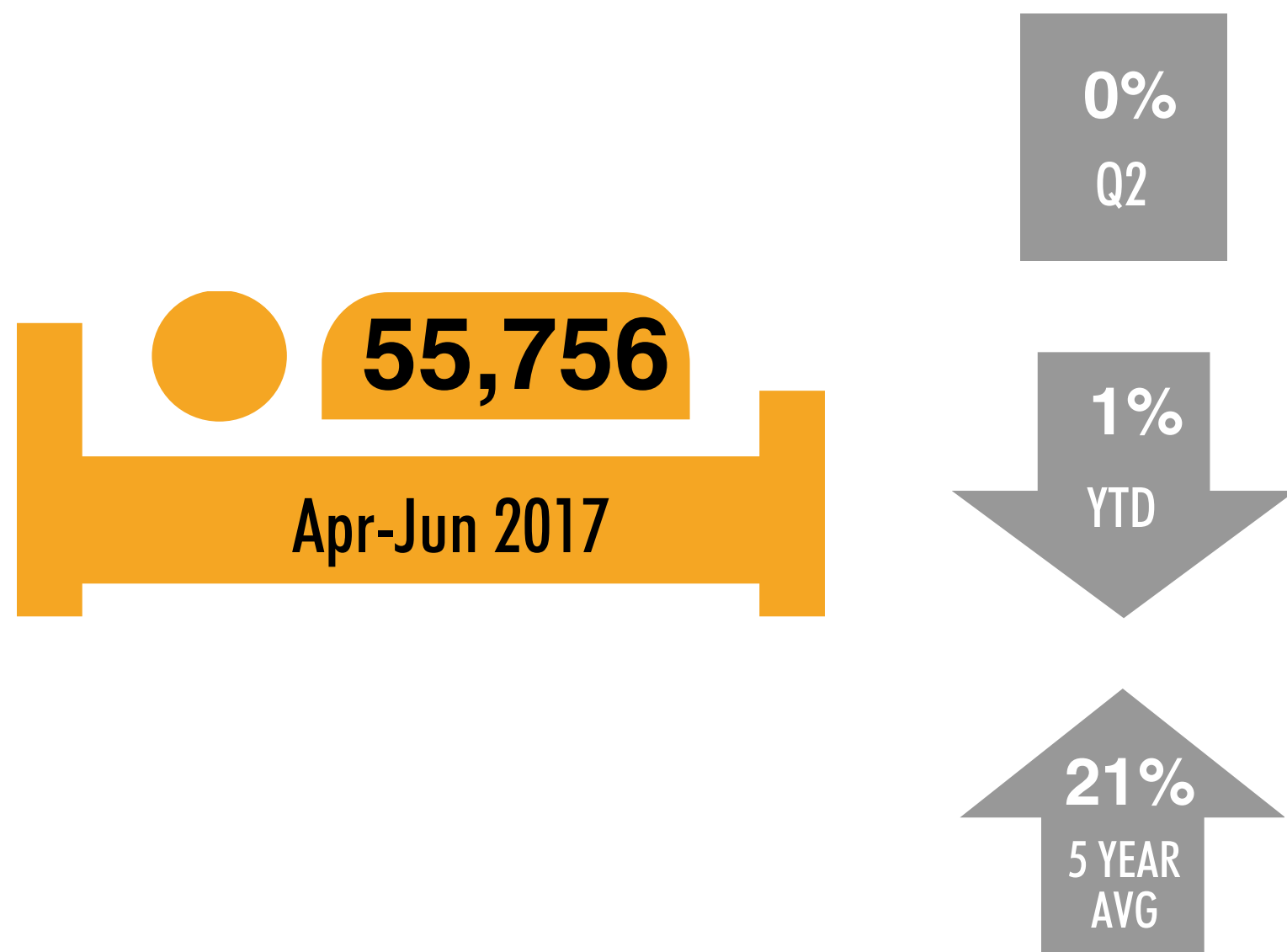


Q2 HIGHLIGHTS: APR - JUN 2017

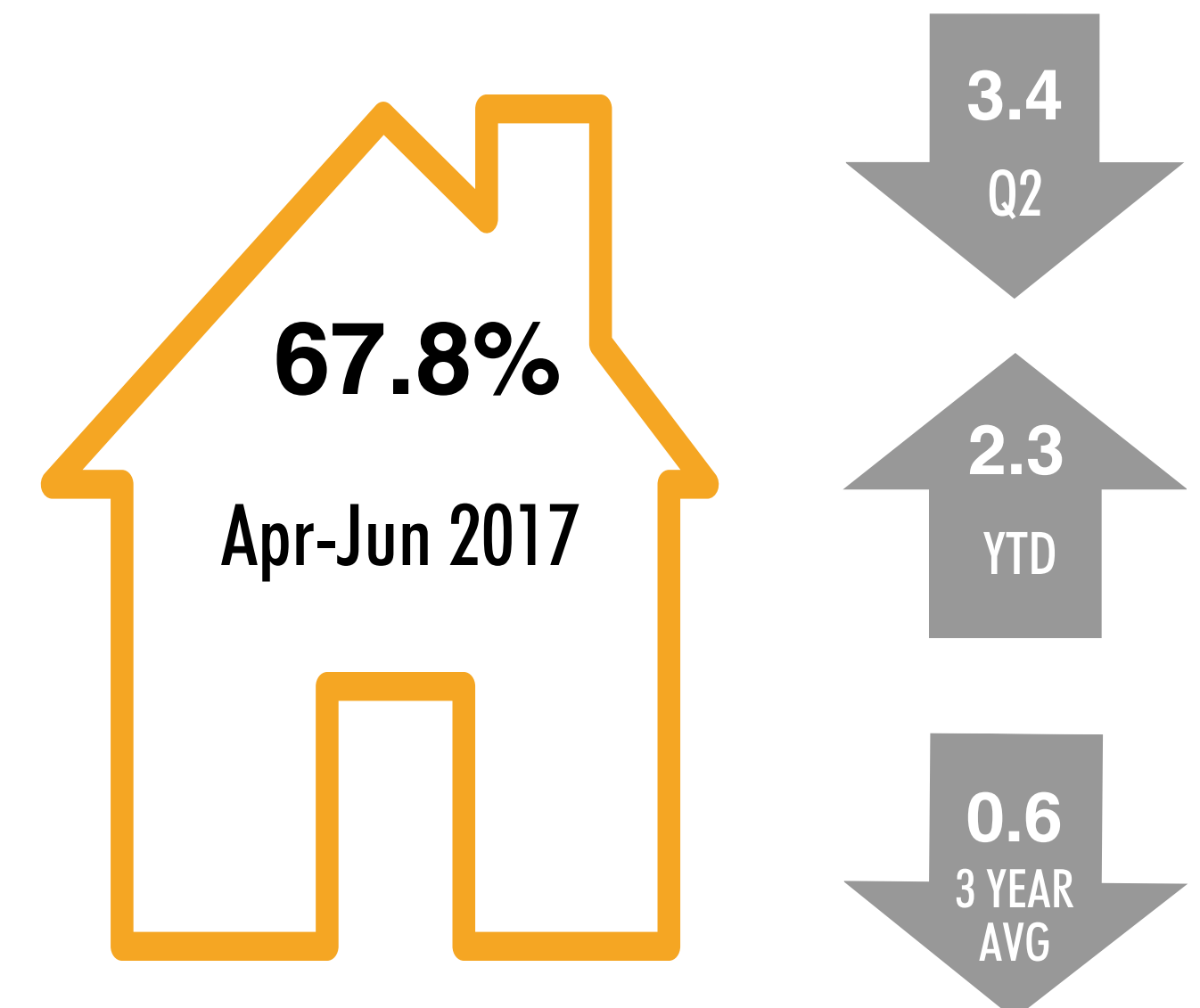
International Overnight Visitation (1+ Nights)



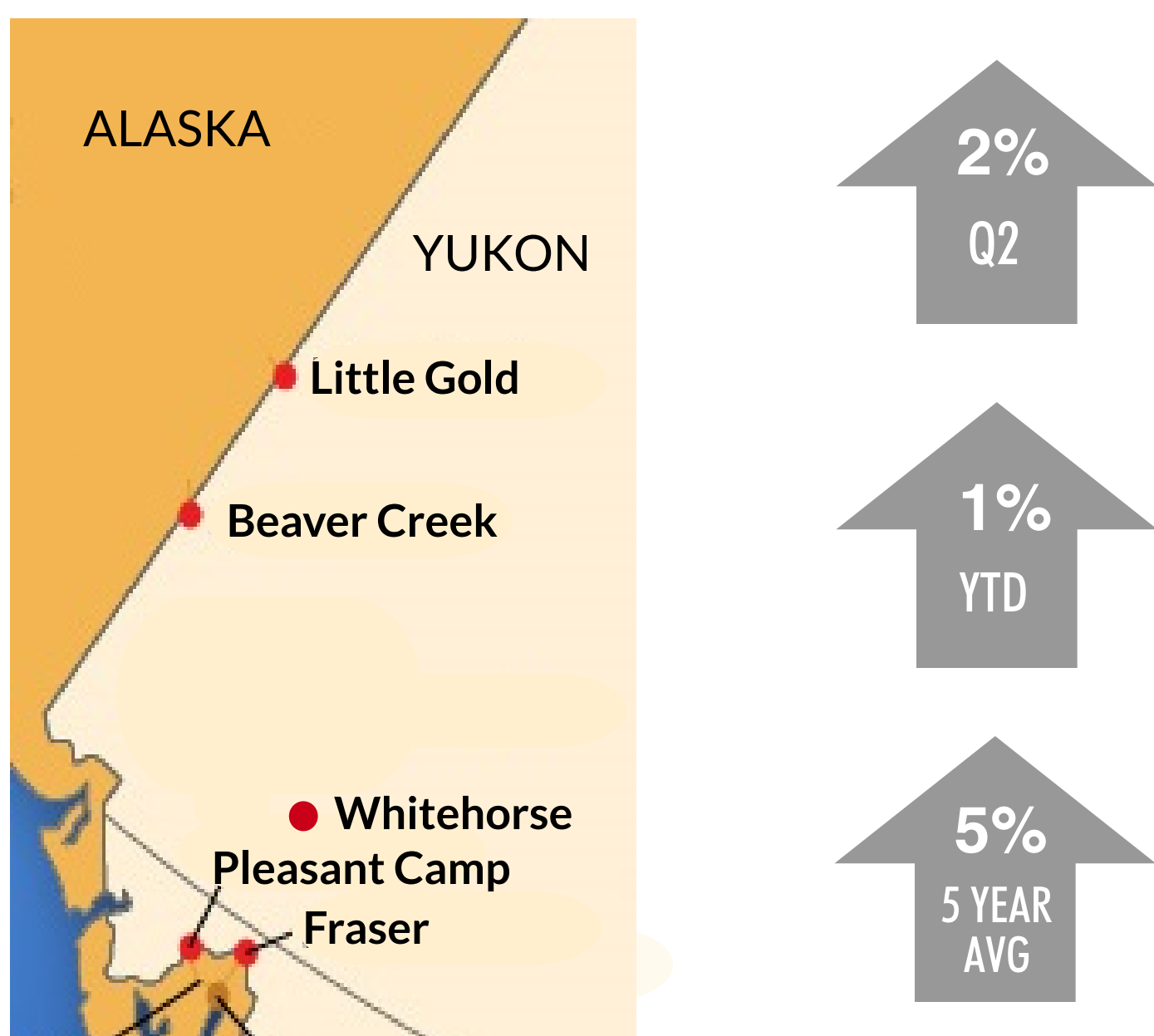
Air Arrivals at Erik Nielson Whitehorse International Airport



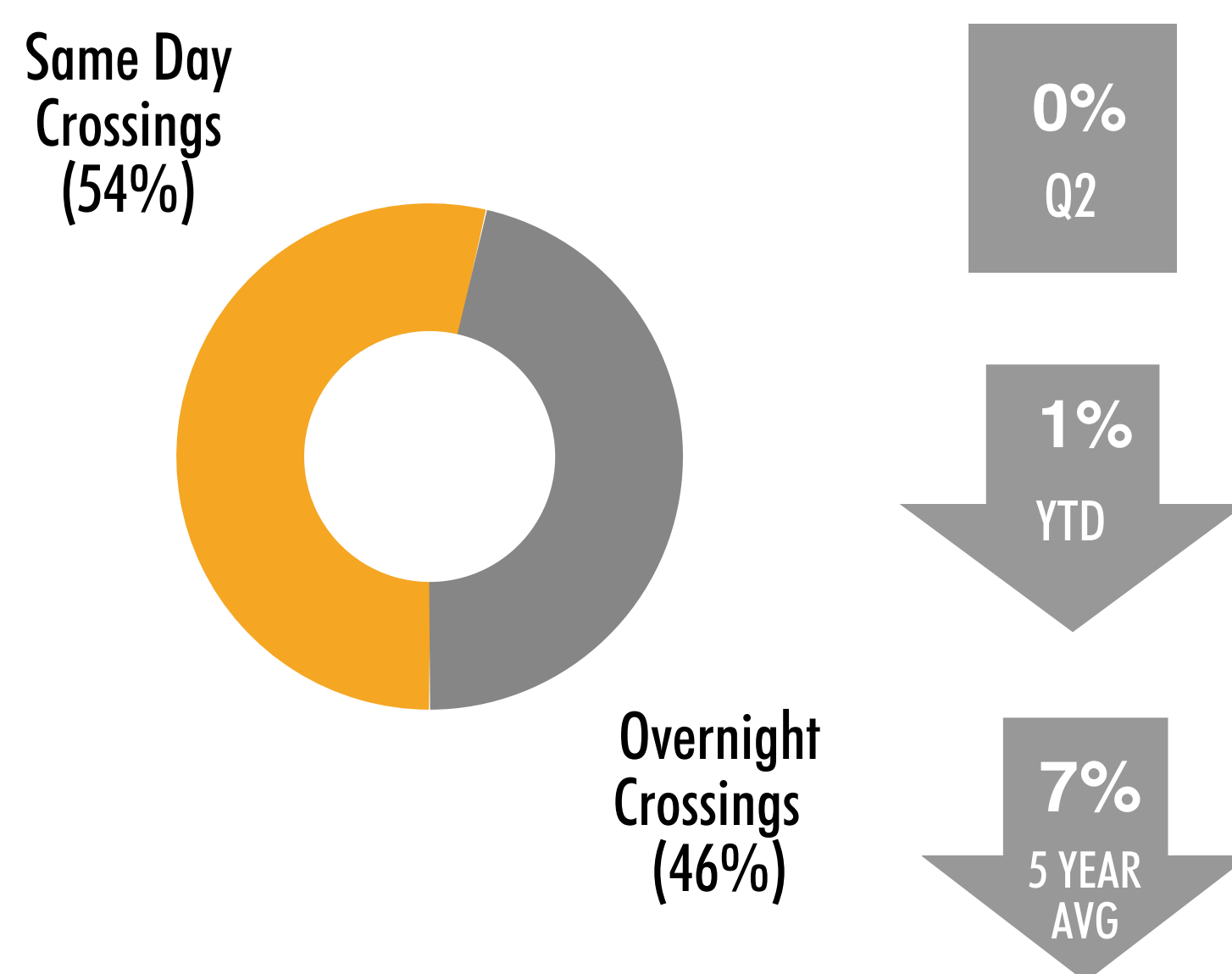
Occupancy at Select Fixed Roof Accommodations



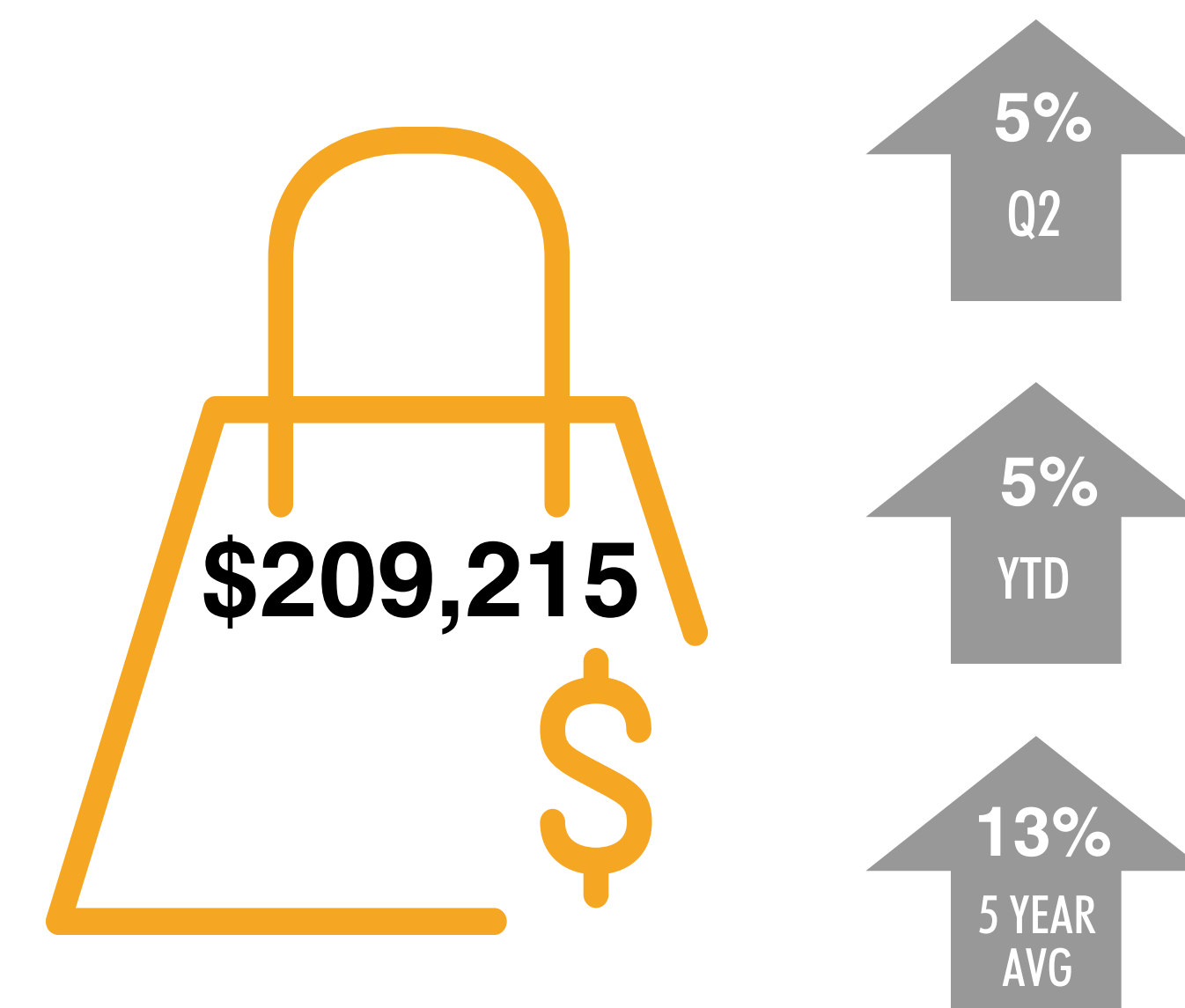
International Border Crossings (Into Yukon)



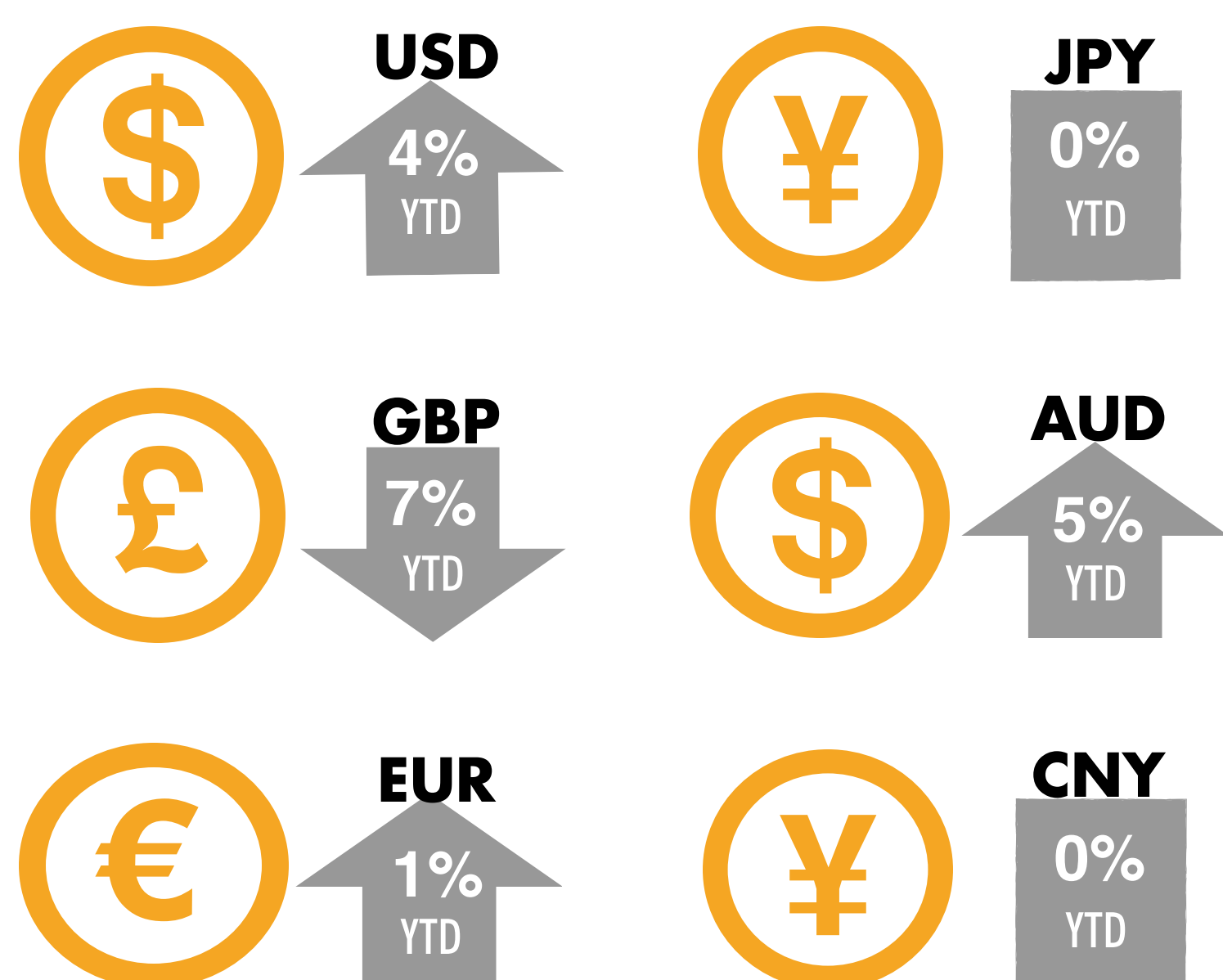
Same Day International Border Crossings (Into Yukon)



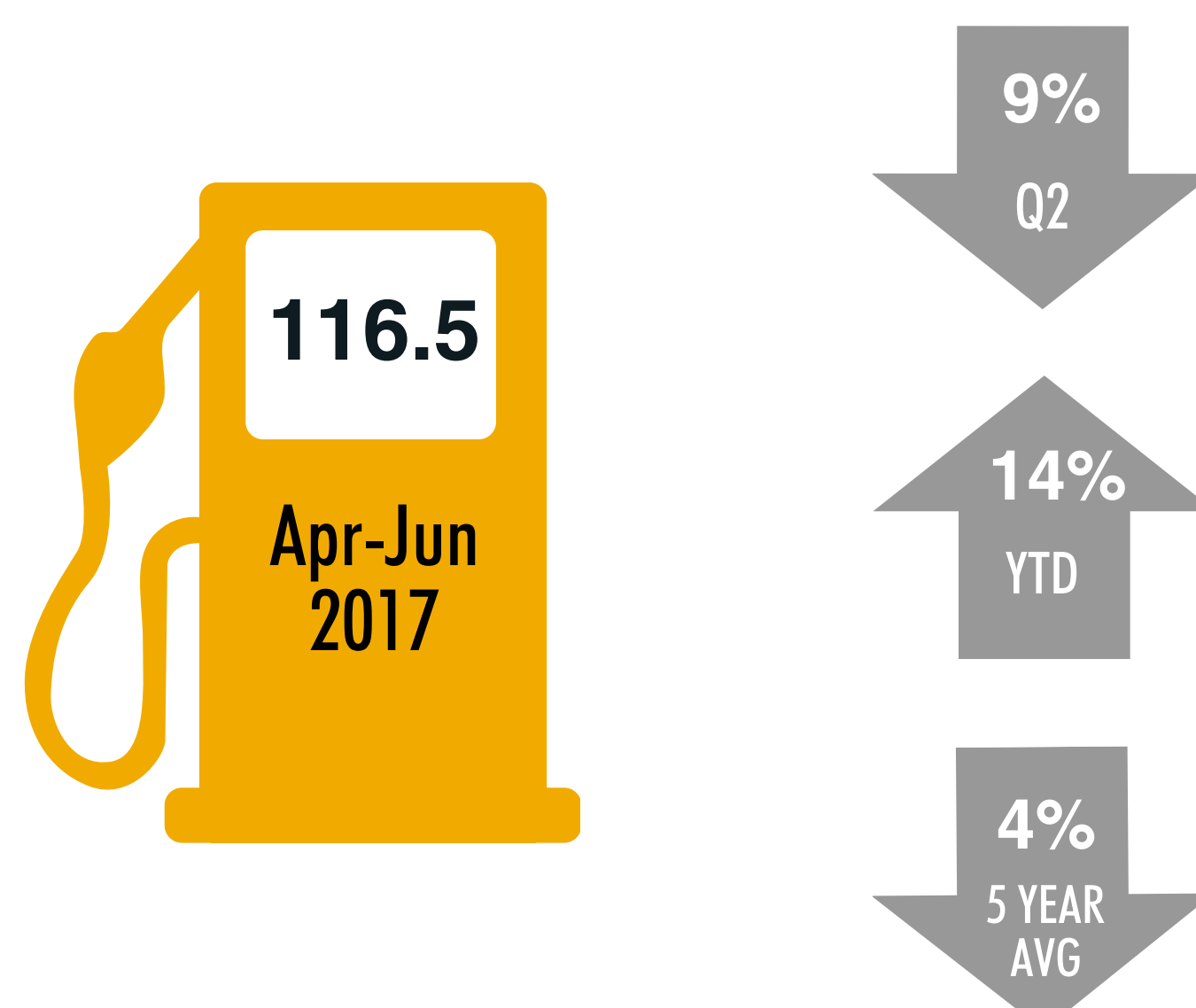
Retail Sales (Total \$000)



Exchange Rates (For CAD)



Average cost per litre of regular self-serve gasoline in Whitehorse



Source: Government of Yukon Socio-Economic Web Portal, Motor Fuel Prices (Whitehorse)

Consumer Confidence in Canada



Source: Conference Board of Canada, Index of Consumer Confidence

YEAR-TO-DATE VS. 5 YEAR AVERAGE

Overnight Visitation (1+ Nights)

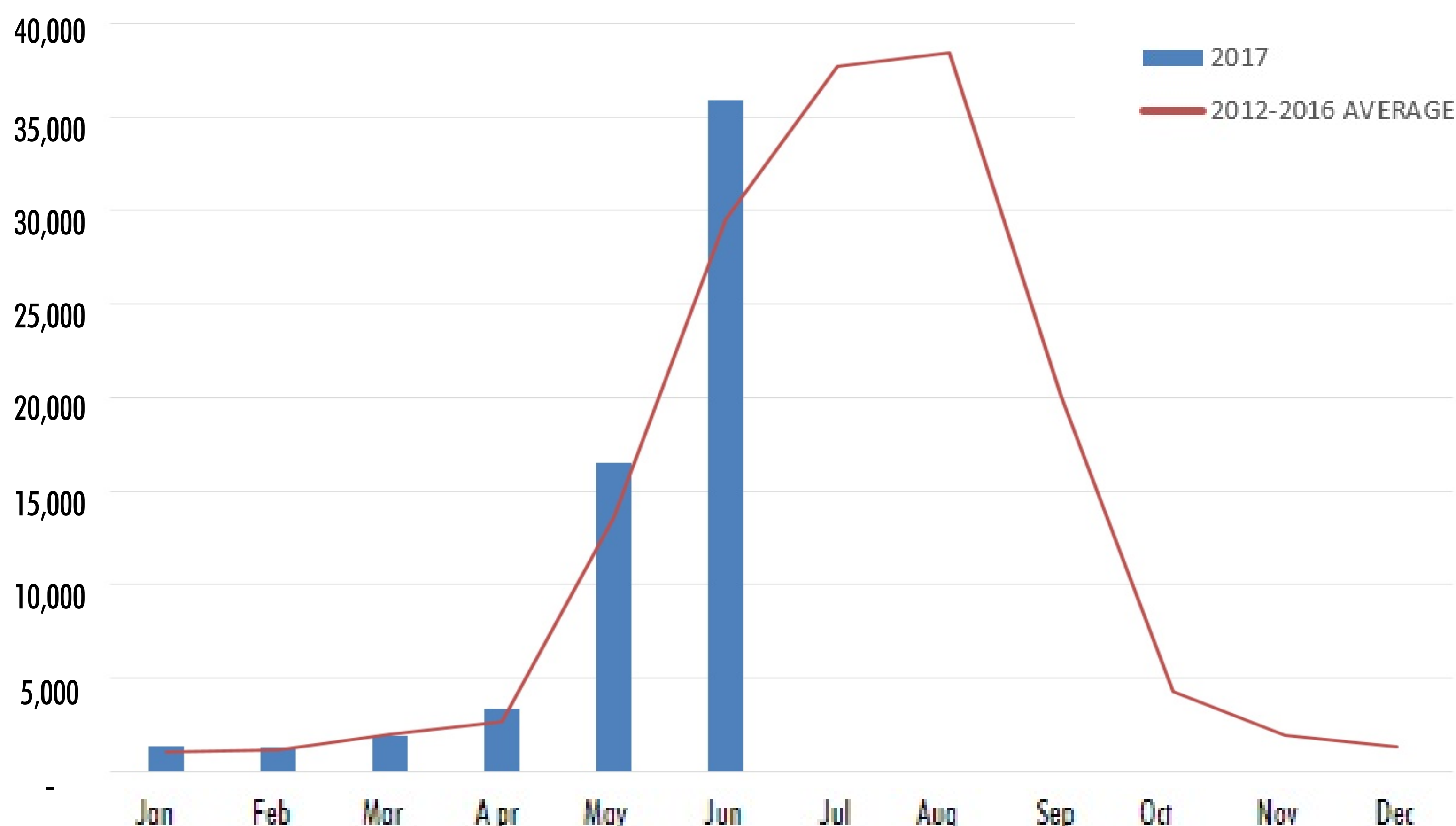
Year-to-date (YTD) overnight visitation for international visitors is 1% lower with 500 fewer visitors than the same period in 2016.

Over the last 5 years overnight visitation has grown by 19% or 9,800 more visitors than the same period in 2013.

YTD overnight visitations in 21% higher than the 5 year average (2012-2016).

Source: Statistics Canada, CANSIM 427-0004.

American and Overseas visitors only, no Canadian visitors are included.



Air Arrivals at Erik Neilson Whitehorse International Airport

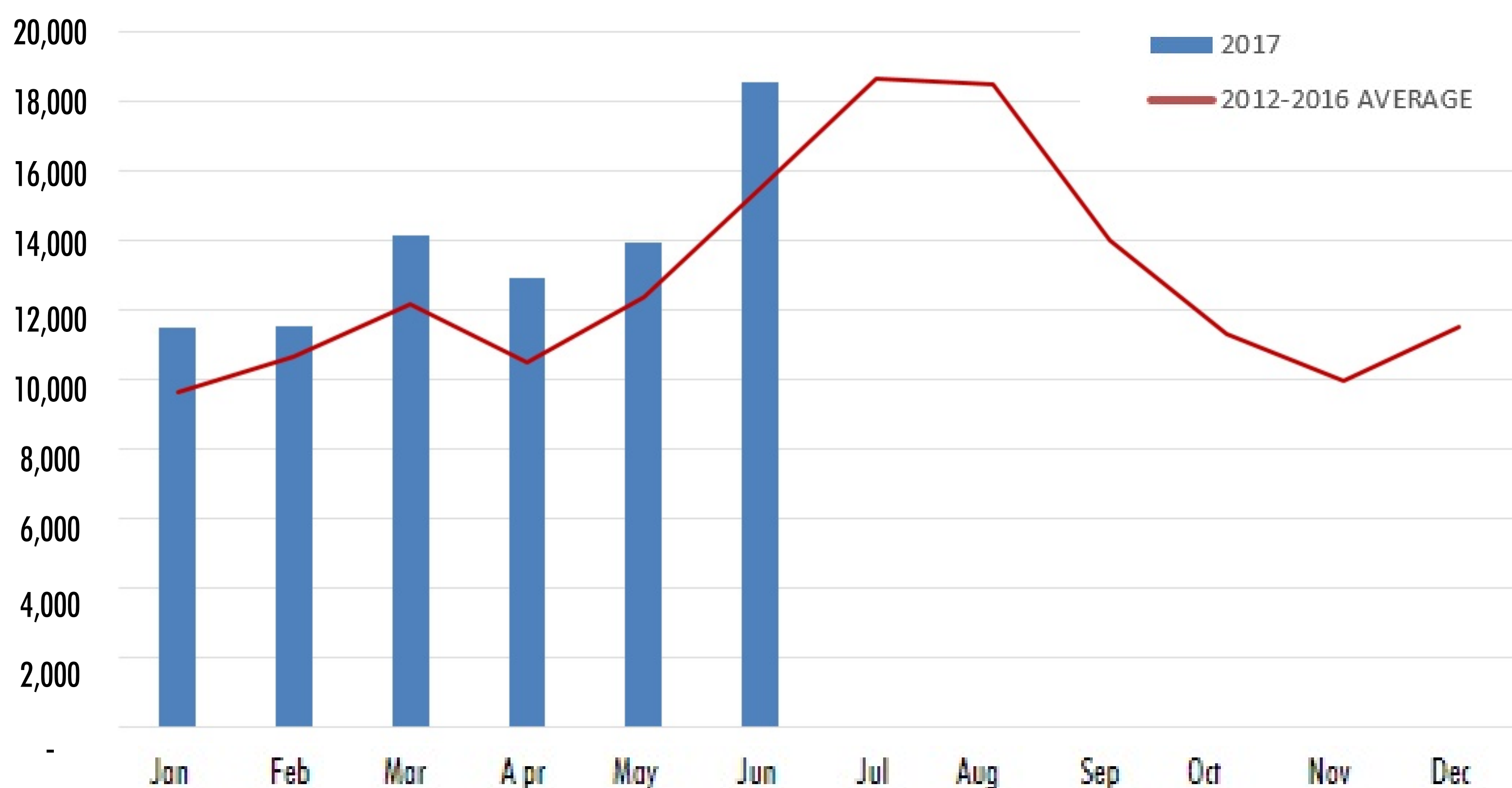
Year to date air arrivals have grown by 5% or 3,800 more passengers than the same period in 2016.

Over the last 5 years, air arrivals have grown by 24% or 15,700 more passengers than in the same period in 2013.

YTD air arrivals are 17% higher than the 5 year average (2012-2016).

Source: Government of Yukon, HPW.

Includes business, pleasure and local air passenger arrivals.



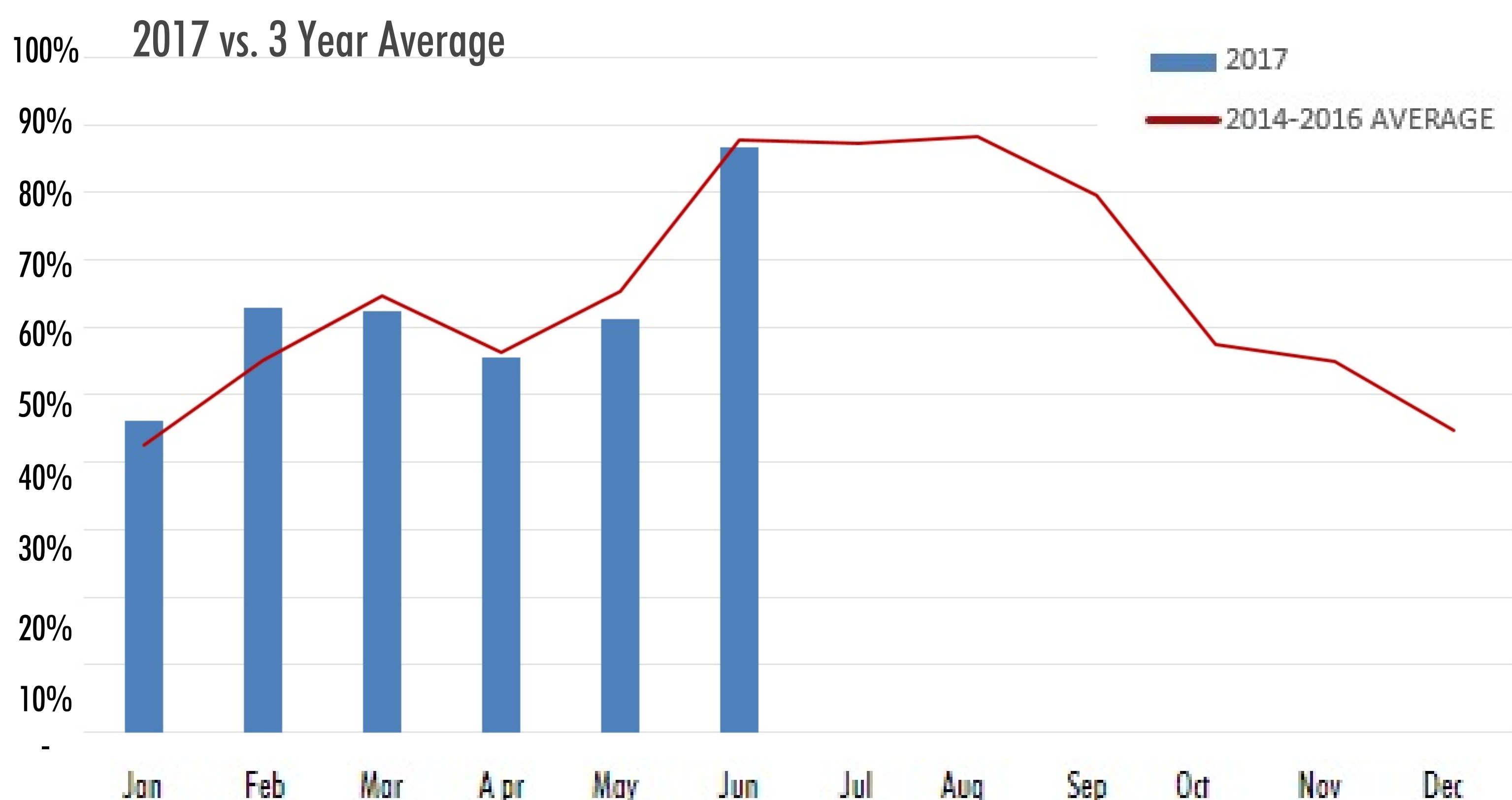
Occupancy at Select Fixed Roof Accommodation

YTD occupancy is 0.6 points higher than the 3 year average* (2014-2016).

YTD Yukon occupancy rates are on par with national rates (62%).

Source: Canadian Tourism Research Institute, Hotels Trends in the Hotel Industry National Market Report; YBS, Monthly Statistics Review.

Figures represent approximately 500 rooms in Yukon and should not be generalized to the whole accommodation market. Figures are presented as an indicator only. *2012-2013 data unavailable.



YUKON TOURISM VISITATION REPORT

JAN - JUN 2017

International Border Crossings (Into Yukon)

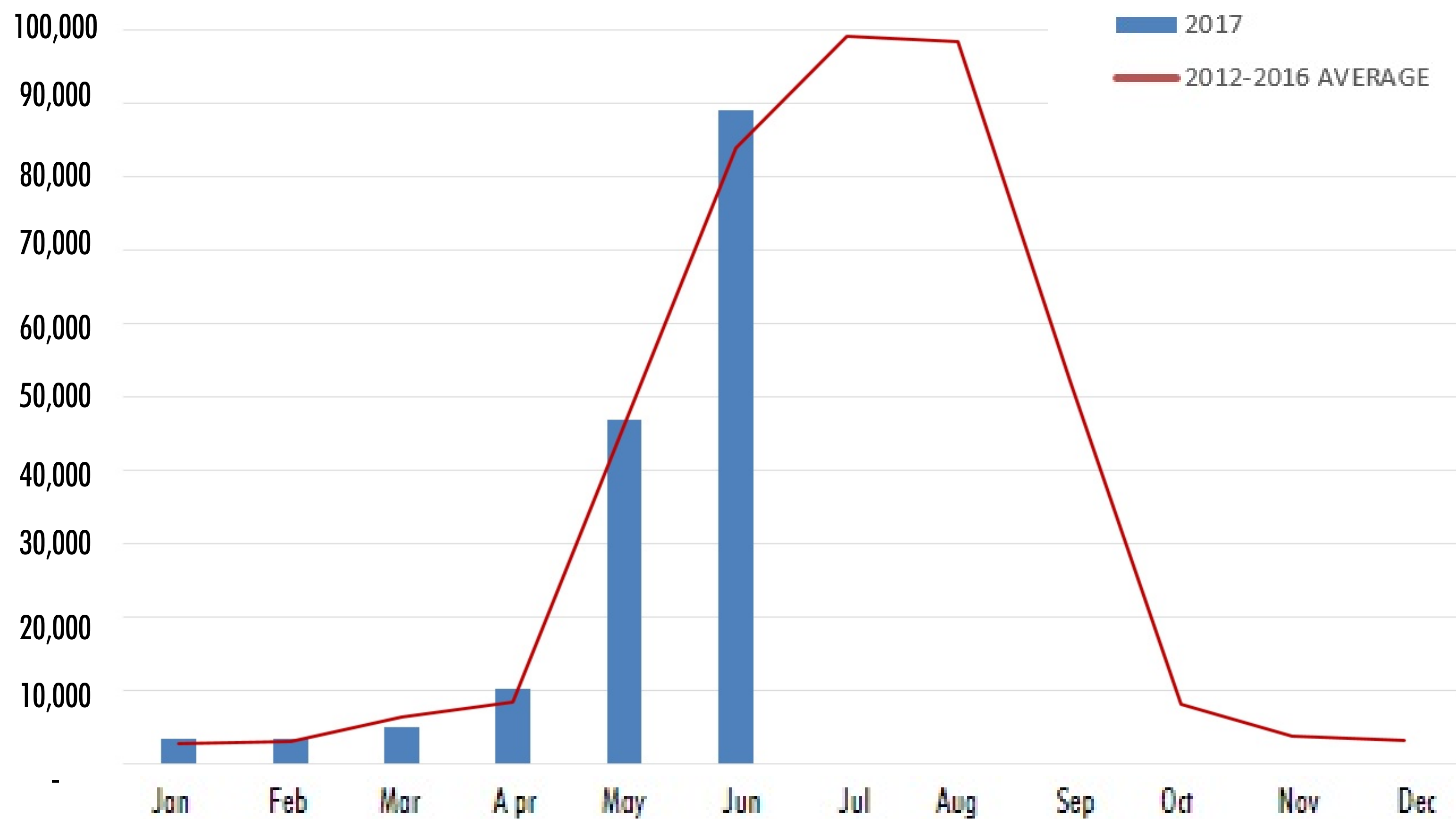
YTD border crossings are 1% higher than in 2016.

The month of April saw a 23% increase in border crossings compared to the 5 year average and a 33% increase compared to April 2016.

YTD crossings through Canadian Border Services Agency ports of entry are 5% higher than the 5 year average (2012-2016).

Source: Statistics Canada, CANSIM 427-0001.

Excludes travellers entering Yukon via BC on the South Alaska or Stewart-Cassiar Highways, the NWT on the Dempster Highway or on domestic flights. Total includes Yukonners.



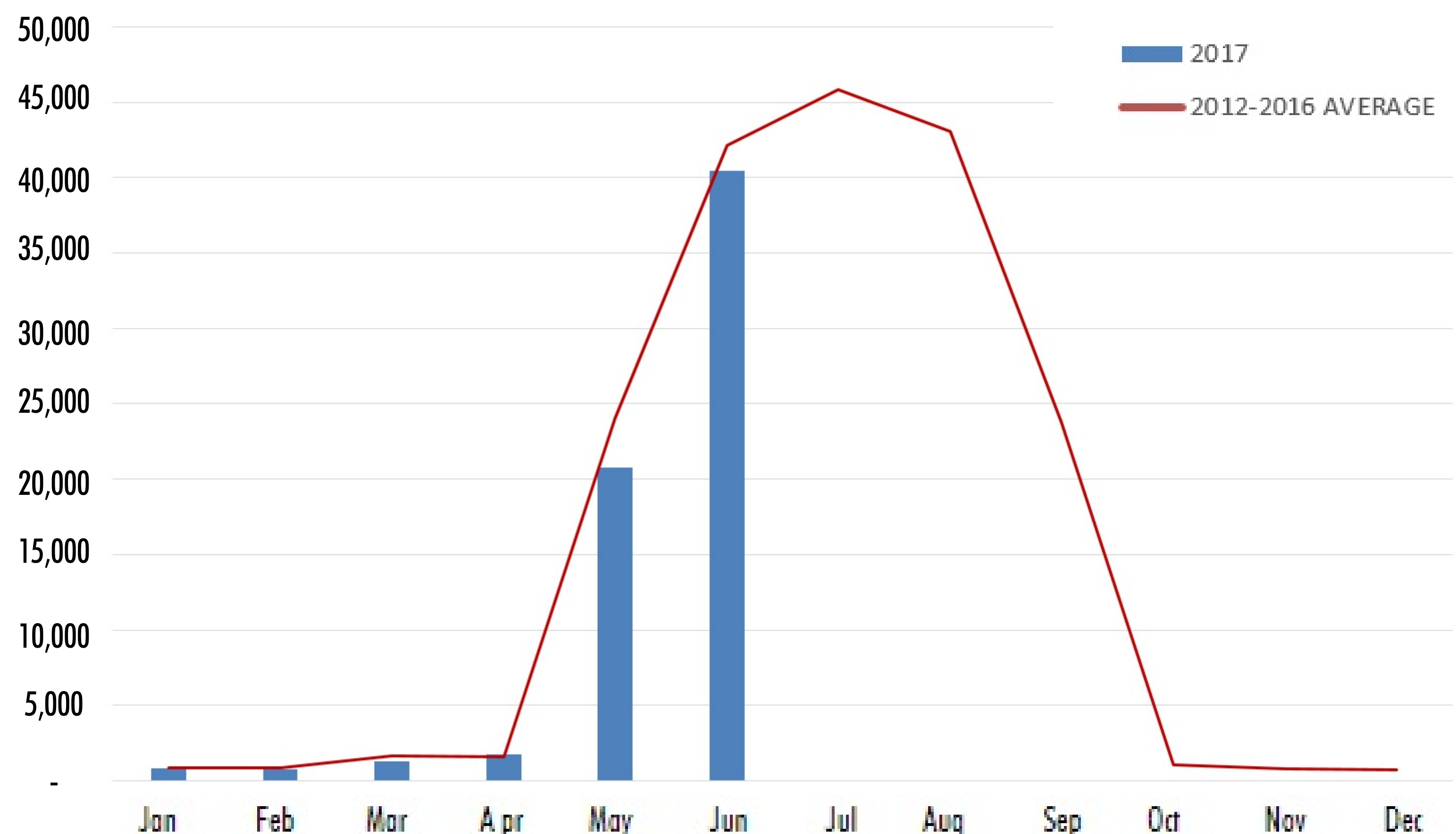
Same Day International Border Crossings (Into Yukon)

YTD same day border crossings are down 1% from 2016.

YTD same day border crossings are down 7% compared to the 5 year average. Overnight border crossings remain constant.

Source: Statistics Canada, CANSIM 427-0001.

Excludes travellers entering Yukon via BC on the South Alaska or Stewart-Cassiar Highways, the NWT on the Dempster Highway or on domestic flights.



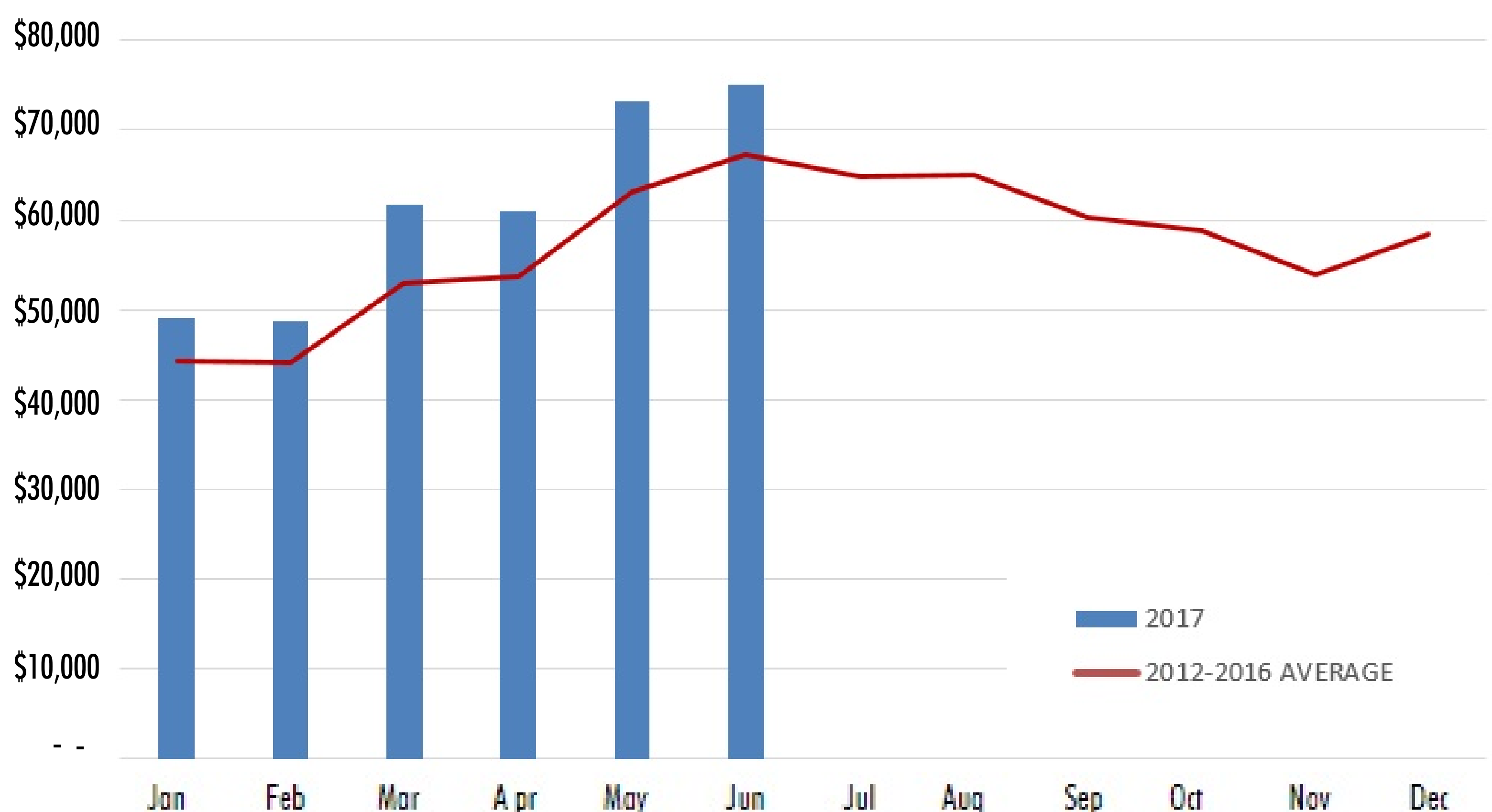
Retail Sales (Total Sales \$000)

YTD retail sales are up 5% (\$15.9 million) from the same period in 2016.

YTD retail sales are up 13% compared to the 5 year average (2012-2016).

Comparatively, national retail sales have increased 7% YTD.

Source: Statistics Canada, CANSIM 080-0020.



2017 YEAR-TO-DATE

Year-to-date (YTD)		JAN		FEB		MAR		APR		MAY		JUN		JUL		AUG		SEP		OCT		NOV		DEC	
% YOY* Change		% YOY 2017 Change		% YOY 2017 Change		% YOY 2017 Change		% YOY 2017 Change		% YOY 2017 Change		% YOY 2017 Change		% YOY 2017 Change		% YOY 2017 Change		% YOY 2017 Change		% YOY 2017 Change		% YOY 2017 Change		% YOY 2017 Change	
OVERNIGHT VISITATION, by Origin ^{1*}																									
Total	60,300	-1%	1,369	-2%	1,412	-9%	1,911	-24%	3,366	14%	16,502	1%	35,888	-1%											
US	54,451	-2%	1,304	-3%	1,193	-11%	1,765	-25%	3,191	16%	15,348	1%	31,650	-3%											
Overseas	5,839	8%	44	63%	92	33%	146	-5%	175	-9%	1,154	0%	4,238	12%											
AIR ARRIVALS AT ERIK NEILSON WHITEHORSE INTERNATIONAL AIRPORT ²																									
Arrivals	82,535	5%	11,461	15%	11,532	-6%	14,135	-2%	12,924	18%	13,934	1%	18,549	7%											
OCCUPANCY AT SELECT FIXED ROOF ACCOMMODATIONS ³																									
Occupancy	62.5%	2.3	46.2%	3.6	62.9%	20.5	62.4%	0.0	55.5%	-1.8	61.2%	-4.2	86.7%	-4.3											
INTERNATIONAL BORDER CROSSINGS (INTO YUKON) ⁴																									
Total	157,792	1%	3,407	-6%	3,413	-4%	5,014	-30%	10,211	33%	46,780	-2%	88,967	2%											
US	109,362	-2%	2,102	-16%	1,964	-17%	3,017	-20%	4,852	5%	31,145	-4%	66,282	0%											
CAN	31,640	7%	1,251	15%	1,351	22%	1,821	-43%	5,081	80%	9,535	2%	12,601	6%											
Other	16,744	8%	54	86%	98	29%	176	-18%	278	11%	6,100	3%	10,038	10%											
SAME DAY INTERNATIONAL BORDER CROSSINGS (INTO YUKON) ⁵																									
Total	65,786	-1%	808	-30%	776 [*]	-26%	1,263 [*]	-17%	1,764	-8%	20,743	-6%	40,432	4%											
RETAIL SALES (\$000) ⁶																									
Total	\$368,835	5%	\$49,169	2%	\$48,701	0%	\$61,750 [*]	9%	\$61,020	0%	\$73,195	8%	\$75,000	6%											

*YOY = Year-over-year variance. For Quarter 2, YTD is comparing (Q1+Q2) 2017 to (Q1+Q2) 2016. Monthly data is comparing 2016 to 2017 (e.g. Jan 2016 to Jan 2017).

¹ Source: Statistics Canada, CANSIM 427-0004. Excludes Candian visitors. ² Source: Government of Yukon, HPW. Includes local air passenger arrivals. ³ Source: Canadian Tourism Research Institute. Figures represent approx. 500 rooms in Yukon only. ^{4/5}

Source: Statistics Canada, CANSIM 427-0001. Excludes travellers entering Yukon via BC by land, the NWT by land or domestic flights. ⁶ Source: Statistics Canada, CANSIM 080-0020. ^{*} Adjusted, June 2017.