

ELECTIONS OFFICE



**VOTE 24
ELECTIONS OFFICE**

SPEAKER OF THE ASSEMBLY

Hon. T. Staffen

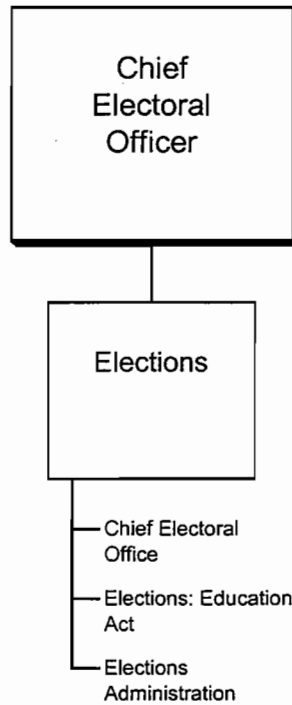
CHIEF ELECTORAL OFFICER

P. Michael

- To manage and conduct elections of Members of the Yukon Legislative Assembly and school-governing groups.
- To provide administrative support for electoral district boundaries commissions.

ELECTIONS OFFICE

RELATIONSHIP BETWEEN ORGANIZATION AND PROGRAMS



**VOTE 24
ELECTIONS OFFICE**

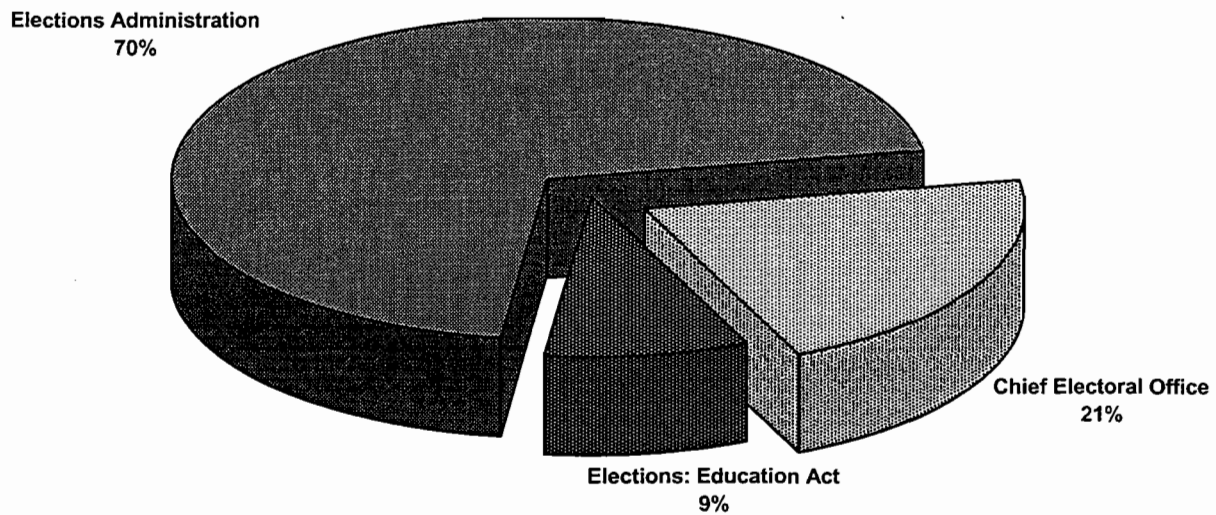
FINANCIAL SUMMARY (\$000s)	2006-07 ESTIMATE	2005-06 FORECAST	% CHANGE	2004-05 ACTUAL
Operation and Maintenance Expenditures				
Elections	744	276	170%	187
Total Operation and Maintenance Vote 24	744	276	170%	187
Amortization Expense	0	0	0%	0
Revenues				
Third-Party Recoveries	0	6	-100%	0
Total Revenues	0	6	-100%	0
Allotments				
Personnel	115	92	25%	86
Other	629	184	242%	101
Transfer Payments	0	0	0%	0
Total Allotments	744	276	170%	187

Note:

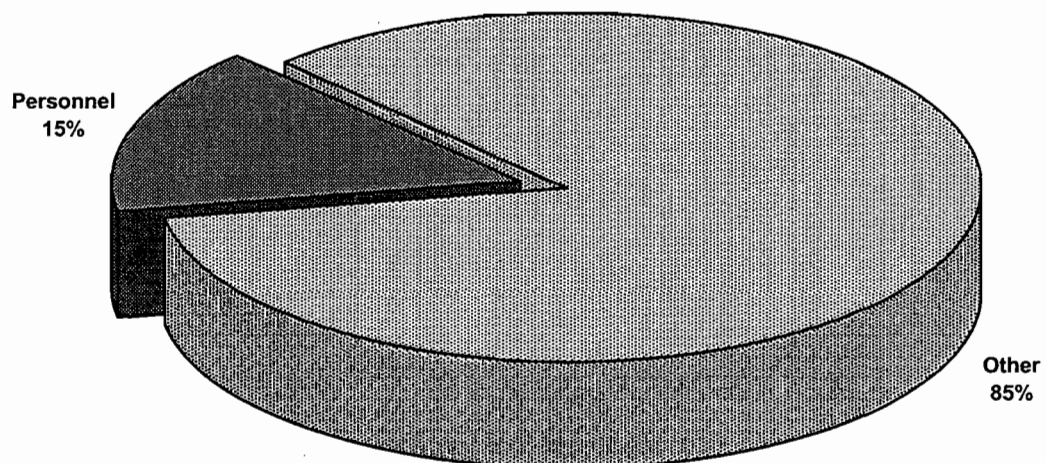
Restated 2005-06 Forecast and 2004-05 Actual to be consistent with the 2006-07 Estimate presentation.

**VOTE 24
ELECTIONS OFFICE**

**2006-07 Estimate
Distribution of O&M Expenditures by Activity**



**2006-07 Estimate
Distribution of O&M Expenditures by Allotment**



ELECTIONS OFFICE

ELECTIONS

PROGRAM DESCRIPTION

- Maintain the elections administrative structure in a state of readiness for the call of an election.
- Conduct by-elections and general elections of Members to the Yukon Legislative Assembly.
- Report to the Yukon Legislative Assembly on election-related matters.
- Conduct elections of members of School Councils and trustees of School Boards pursuant to the *Education Act*.
- Provide consultative services and resources regarding election administration to other agencies.
- Provide secretariat services to electoral district boundaries commissions.

O&M EXPENDITURES (\$000s)	2006-07 ESTIMATE	2005-06 FORECAST	% CHANGE	2004-05 ACTUAL
Activities				
Chief Electoral Office	158	200	-21%	131
Elections: Education Act	64	10	540%	56
Elections Administration	522	66	691%	0
Total Elections	744	276	170%	187
Allotments				
Personnel	115	92	25%	86
Other	629	184	242%	101
Transfer Payments	0	0	0%	0
Total Allotments	744	276	170%	187

ELECTIONS OFFICE

REVENUES (\$000s)	2006-07 ESTIMATE	2005-06 FORECAST	% CHANGE	2004-05 ACTUAL
-------------------	---------------------	---------------------	-------------	-------------------

THIRD-PARTY RECOVERIES

Elections

Prior Years' Recoveries

TOTAL REVENUES

0	6	-100%	0
0	6	-100%	0