

HEALTH AND SOCIAL SERVICES

VOTE 15

DEPARTMENT OF HEALTH AND SOCIAL SERVICES

MINISTER

Hon. G. Hart

DEPUTY MINISTER

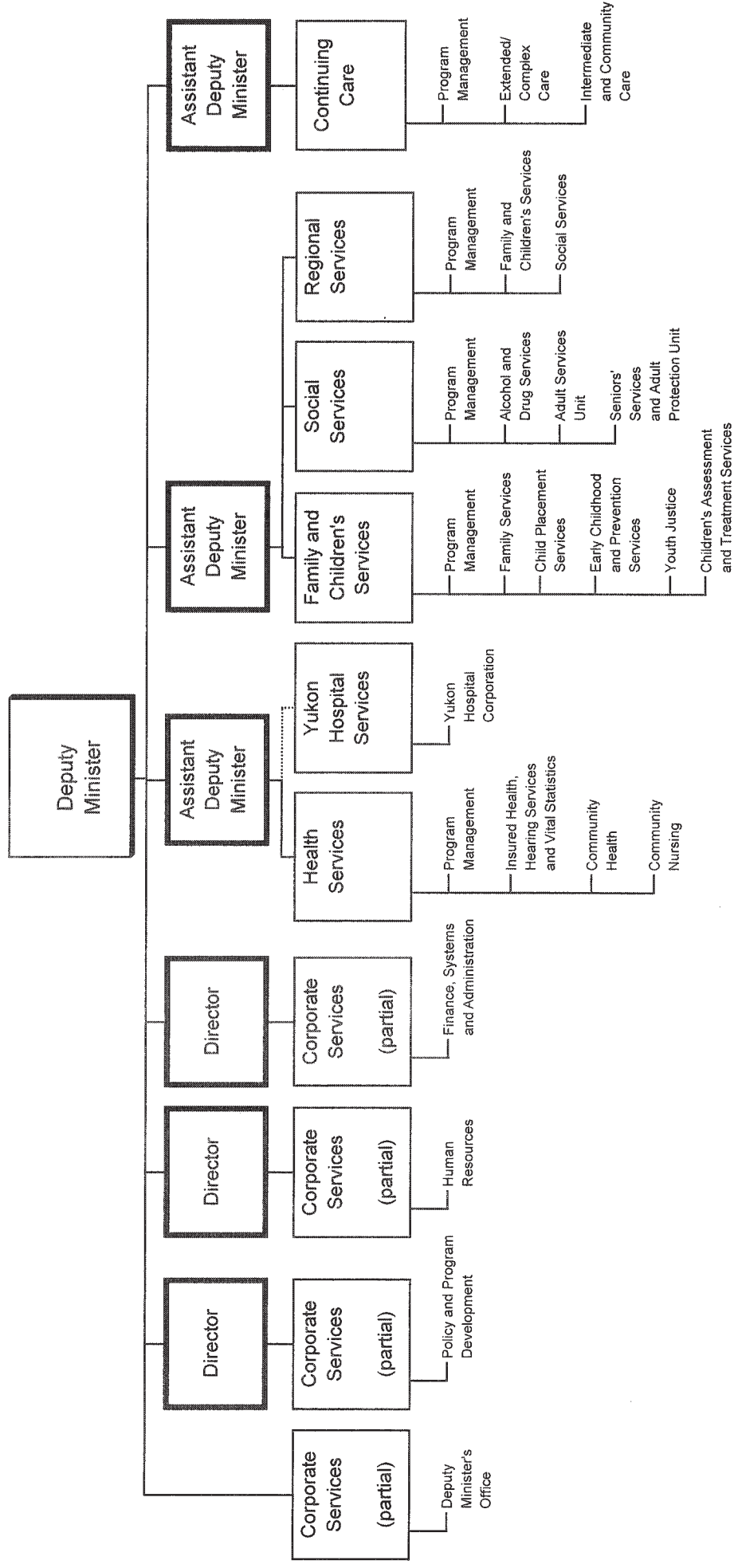
S. Whitley

DEPARTMENTAL OBJECTIVE

- To work with the community to ensure quality health and social services for Yukoners. This will be achieved by helping individuals acquire the skills to live responsible, active, healthy and independent lives; and by providing a range of accessible, sustainable services that assist individuals, families and communities to reach their full potential.

DEPARTMENT OF HEALTH AND SOCIAL SERVICES

RELATIONSHIP BETWEEN ORGANIZATION AND PROGRAMS



Note: Dark outlined boxes represent positions reporting directly to the Deputy Minister. Other boxes represent programs. Activities are listed below the programs. Programs identified as "partial" represent responsibility for the program being shared by two or more positions reporting directly to the Deputy Minister.

VOTE 15
DEPARTMENT OF HEALTH AND SOCIAL SERVICES

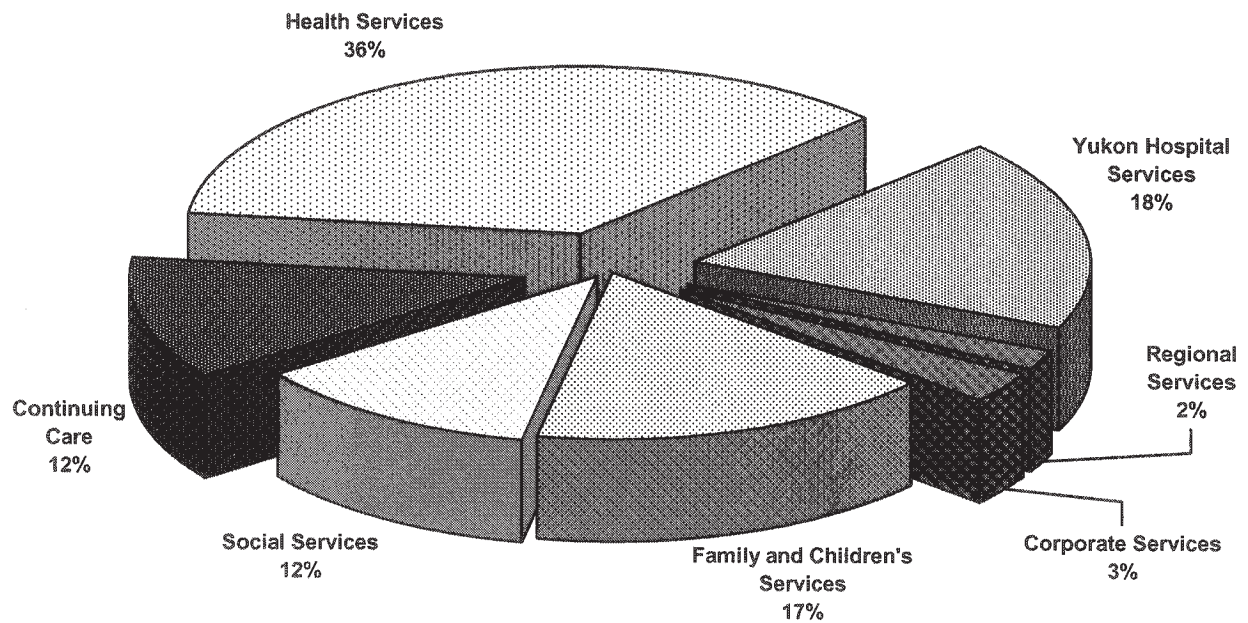
FINANCIAL SUMMARY (\$000s)	2010-11 ESTIMATE	Comparable		
		2009-10 FORECAST	2009-10 ESTIMATE	2008-09 ACTUAL
Operation and Maintenance Expenditures				
Corporate Services	6,823	7,510	6,887	6,748
Family and Children's Services	39,040	37,429	36,595	35,936
Social Services	27,390	29,779	26,061	24,218
Continuing Care	27,569	27,211	26,245	24,682
Health Services	82,735	100,990	91,457	93,681
Yukon Hospital Services	42,550	40,909	37,584	37,955
Regional Services	4,637	4,923	4,717	4,823
Total Operation and Maintenance Vote 15	230,744	248,751	229,546	228,043
Amortization Expense	1,626	1,517	2,962	2,086
Revenues				
Transfers from Canada	0	7,933	7,933	7,933
Taxes and General Revenues	42	42	42	60
Third-Party Recoveries	6,167	6,442	6,525	5,833
Recoveries from Canada	16,586	18,431	16,479	18,641
Amortization of Deferred Capital Contributions	797	651	1,679	816
Total Revenues	23,592	33,499	32,658	33,283
Allotments				
Personnel	71,700	75,162	72,601	68,981
Other	61,645	69,904	62,383	67,106
Transfer Payments	97,399	103,685	94,562	91,956
Total Allotments	230,744	248,751	229,546	228,043

Note:

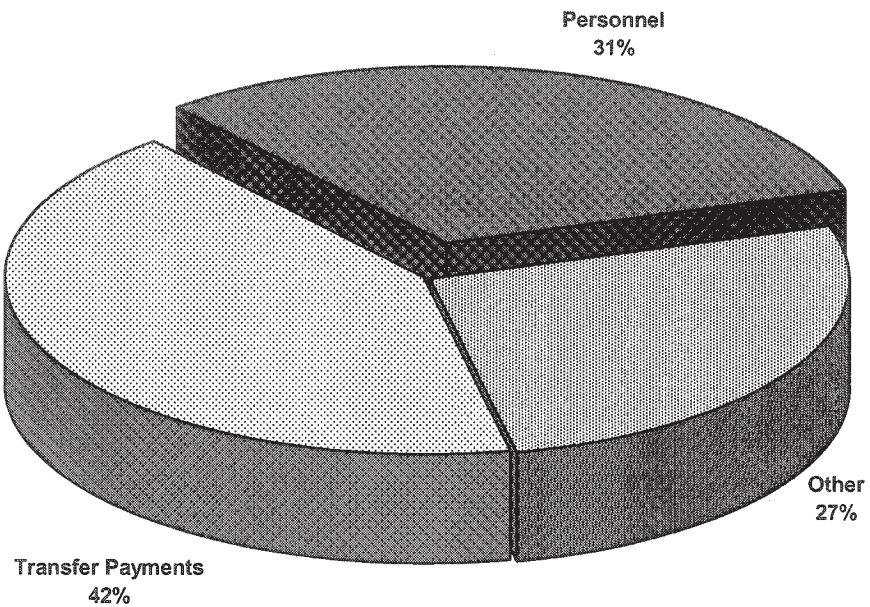
Restated 2009-10 Forecast, 2009-10 Estimate and 2008-09 Actual to be consistent with the 2010-11 Estimate presentation.

VOTE 15
DEPARTMENT OF HEALTH AND SOCIAL SERVICES

2010-11 Estimate
Distribution of O&M Expenditures by Program



2010-11 Estimate
Distribution of O&M Expenditures by Allotment



HEALTH AND SOCIAL SERVICES

CORPORATE SERVICES

PROGRAM OBJECTIVE

- To provide leadership and support to the Department of Health and Social Services through planning, policy and program development and the provision of corporate financial, human resource, communication, information, technology, risk management and decision support services.

O&M EXPENDITURES (\$000s)	2010-11 ESTIMATE	Comparable		
		2009-10 FORECAST	2009-10 ESTIMATE	2008-09 ACTUAL
Activities				
Deputy Minister's Office	1,844	2,411	1,872	2,108
Policy and Program Development	617	662	606	563
Human Resources	1,817	1,863	1,839	1,823
Finance, Systems and Administration	2,545	2,574	2,570	2,254
Total Corporate Services	6,823	7,510	6,887	6,748
Allotments				
Personnel	4,854	4,846	4,818	4,452
Other	1,523	2,114	1,623	1,787
Transfer Payments	446	550	446	509
Total Allotments	6,823	7,510	6,887	6,748

HEALTH AND SOCIAL SERVICES

FAMILY AND CHILDREN'S SERVICES

PROGRAM OBJECTIVE

- To provide and coordinate services and community resources to support the positive functioning of children, youth and families.

O&M EXPENDITURES (\$000s)	2010-11 ESTIMATE	Comparable		
		2009-10 FORECAST	2009-10 ESTIMATE	2008-09 ACTUAL
Activities				
Program Management	5,957	5,369	4,526	4,930
Family Services	3,711	3,835	4,089	3,317
Child Placement Services	6,173	6,217	6,126	5,952
Early Childhood and Prevention Services	9,809	8,455	8,981	8,255
Youth Justice	4,378	3,861	3,681	3,956
Children's Assessment and Treatment Services	9,012	9,692	9,192	9,526
Total Family and Children's Services	39,040	37,429	36,595	35,936
Allotments				
Personnel	18,710	17,716	17,636	17,346
Other	7,679	8,330	7,359	8,118
Transfer Payments	12,651	11,383	11,600	10,472
Total Allotments	39,040	37,429	36,595	35,936

HEALTH AND SOCIAL SERVICES

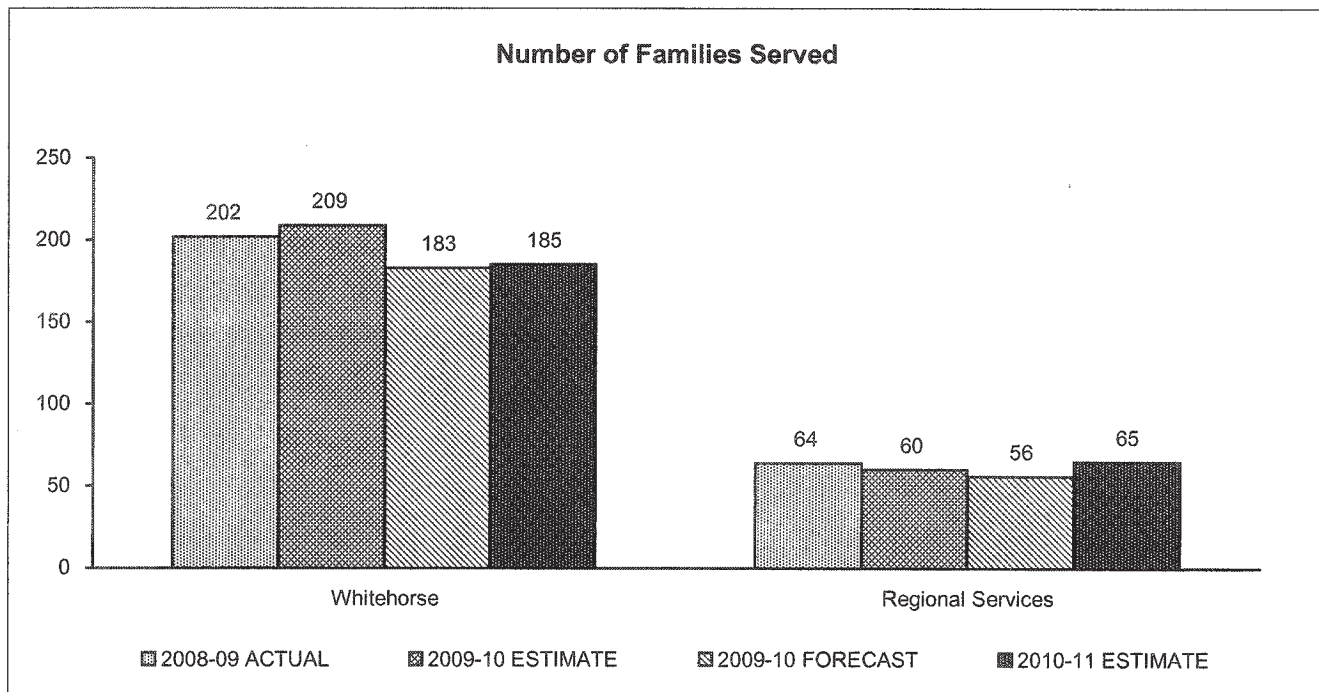
FAMILY AND CHILDREN'S SERVICES

Family Services

STATISTICS

- Family services including counselling, prevention and support measures are provided by the Family Services Unit in Whitehorse and by Regional Services personnel in rural communities. These services include supports to children with disabilities.

Family Services	2010-11 ESTIMATE	Comparable		
		2009-10 FORECAST	2009-10 ESTIMATE	2008-09 ACTUAL
Individual Families Served				
Whitehorse	185	183	209	202
Regional Services	65	56	60	64



Supplementary Information (2008-09 figures)

- 69% of the families served were one-parent families, 31% were two-parent.
- The median length of time a family services case is open, based on cases closed, is 2.95 months.

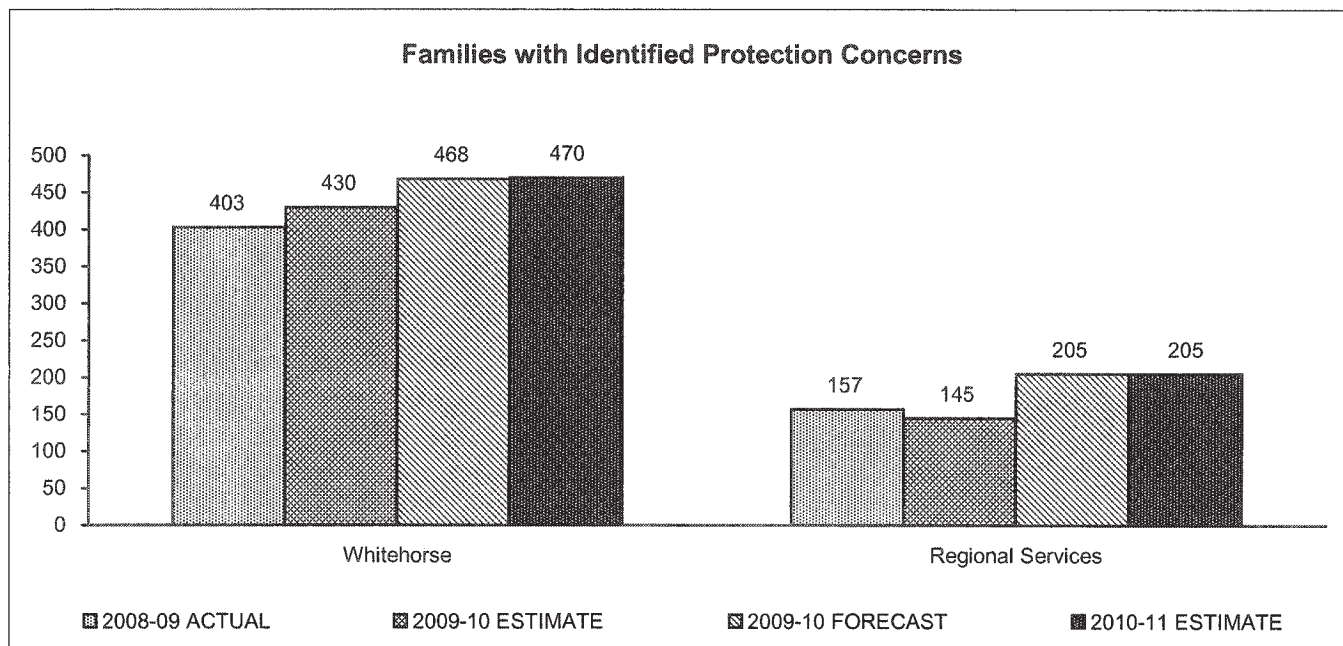
HEALTH AND SOCIAL SERVICES

FAMILY AND CHILDREN'S SERVICES Family Services Child Protection Services

STATISTICS

- Child protection services pursuant to the *Children's Act (Child and Family Services Act* after April 30, 2010) are provided by the Family Services Unit in Whitehorse and by Regional Services personnel in rural communities.

Child Protection	2010-11 ESTIMATE	Comparable		
		2009-10 FORECAST	2009-10 ESTIMATE	2008-09 ACTUAL
Families with Identified Protection Concerns				
Whitehorse	470	468	430	403
Regional Services	205	205	145	157



Supplementary Information (2008-09 figures)

Profile of children in child protection cases

- The average number of children involved in child protection cases was 1.7 per case.
- 67.5% of the families served were one-parent families, 32.5% were two-parent.
- The median length of time a child protection case is open, based on cases closed, is 1.05 months.

HEALTH AND SOCIAL SERVICES

FAMILY AND CHILDREN'S SERVICES

Child Placement Services

Adoption Services

STATISTICS

- Adoption services are provided within Child Placement Services in Whitehorse and by Regional Services personnel in rural communities.
- In agency adoptions, children in the care and custody of Family and Children's Services (Yukon) or other jurisdictions are placed with selected families by social workers. In private adoptions, children are placed by the birth parents with a family of their choice.

Adoption	2010-11 ESTIMATE	Comparable		
		2009-10 FORECAST	2009-10 ESTIMATE	2008-09 ACTUAL
Number of Adoptive Homes				
Whitehorse				
Pending	60	60	55	50
Approved and Waiting for Child Placement	20	17	35	13
Regional				
Pending	2	2	3	5
Approved and Waiting for Child Placement	5	5	3	6
Adoption Subsidies (#)	30	24	45	25
Adoption Disclosure Cases	25	22	35	27
Adoption Reunion Cases	5	4	8	5
Families Receiving Post Adoption Services	18	13	37	18

HEALTH AND SOCIAL SERVICES

FAMILY AND CHILDREN'S SERVICES

Child Placement Services

Children in Care

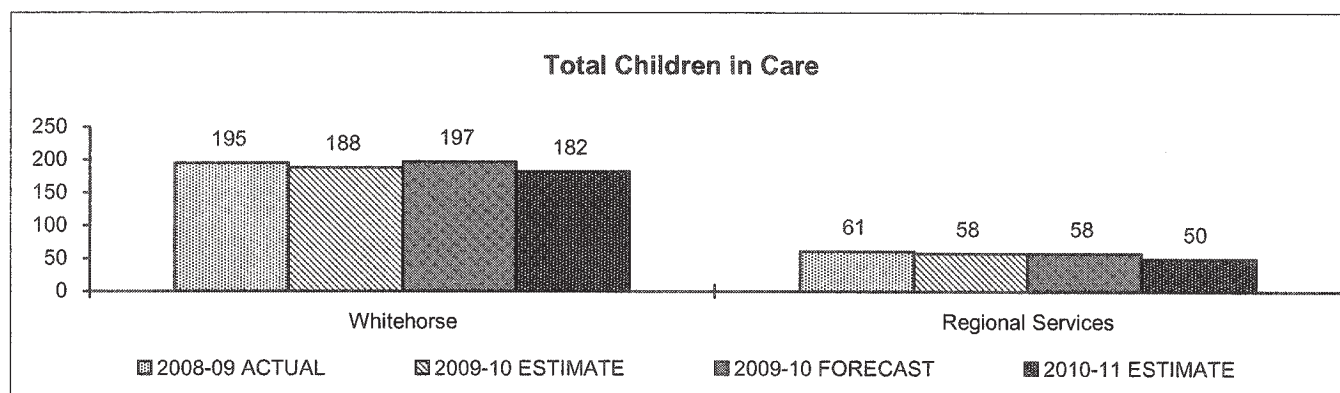
STATISTICS

- Services to children in the care and custody of the Director of Family and Children's Services pursuant to the *Children's Act (Child and Family Services Act* after April 30, 2010) are provided by the Family Services Unit and the Child Placement Unit in Whitehorse, and by Regional Services personnel in rural communities.

		Comparable		
	2010-11	2009-10	2009-10	2008-09
Children in Care	ESTIMATE	FORECAST	ESTIMATE	ACTUAL
Whitehorse				
Temporary Care	70	75	66	73
Permanent Care	110	120	121	119
From Other Jurisdictions	2	2	1	3
Regional Services				
Temporary Care	35	23	30	32
Permanent Care	15	35	28	29
From Other Jurisdictions	0	0	0	0

Notes:

Children are only counted once - if a child changed jurisdictions during the year, the child is counted in the last jurisdiction the child was in.



SUPPLEMENTARY INFORMATION

Profile of children in care (2008-09)

- The population of children in the care and custody of the department was 3.6% of the Yukon's estimated population (December, 2008) of children aged birth to 17 years of age (3.6% in 2007-08).

Total Children in Care					Yukon population under 18 years of age
	Whitehorse	Regional	From Other Jurisdictions	Total	
	192	61	3	256	7,122

HEALTH AND SOCIAL SERVICES

FAMILY AND CHILDREN'S SERVICES

Child Placement Services

Fostering Services

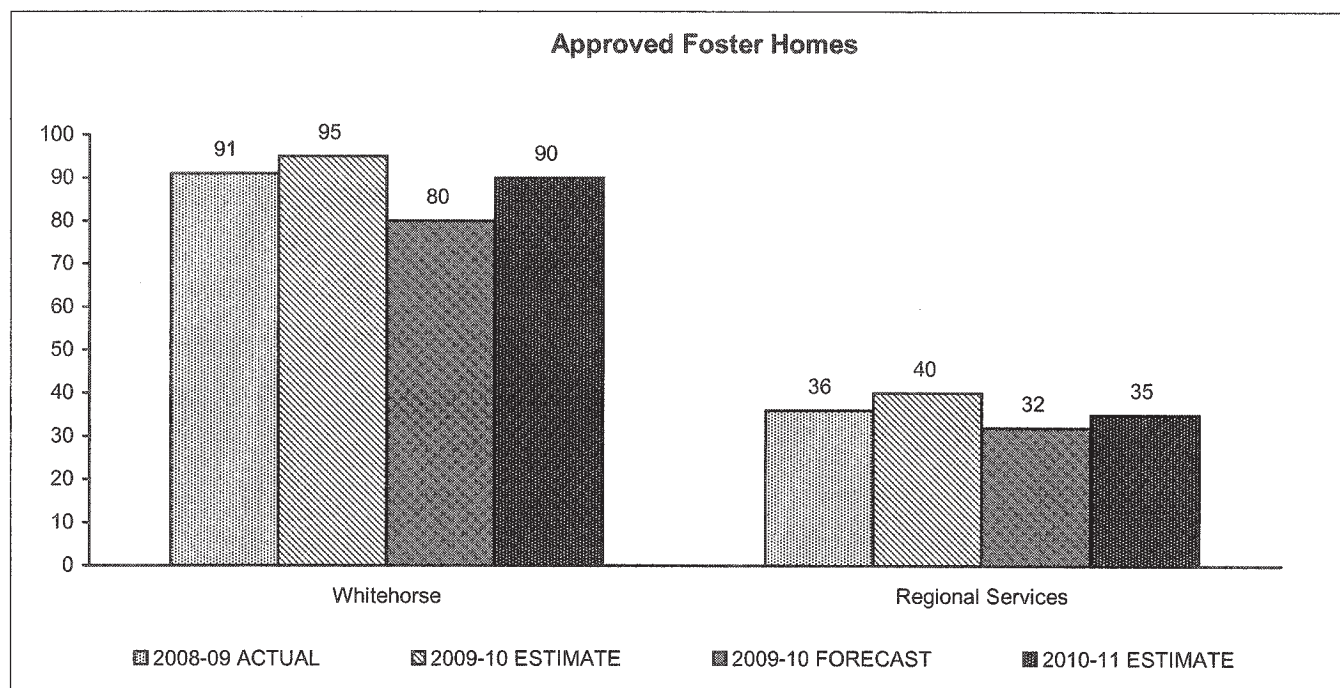
STATISTICS

- Fostering services are provided by the Child Placement Services Unit in Whitehorse and by Regional Services personnel in rural communities.
- On March 31, 2009, there were 91 approved foster homes in Whitehorse, and 36 approved foster homes in the Regional communities.

Fostering	2010-11 ESTIMATE	Comparable		
		2009-10 FORECAST	2009-10 ESTIMATE	2008-09 ACTUAL

Number of Approved Homes

Whitehorse	90	80	95	91
Regional Services	35	32	40	36



HEALTH AND SOCIAL SERVICES

FAMILY AND CHILDREN'S SERVICES Early Childhood and Prevention Services Child Care Services

STATISTICS

- Child care services are provided primarily by the Child Care Services Unit in Whitehorse, with some assistance from Regional Services personnel in rural communities.

Child Care	2010-11 ESTIMATE	<i>Comparable</i>		
		2009-10 FORECAST	2009-10 ESTIMATE	2008-09 ACTUAL
Yukon Population from age 0 to 11 inclusive				
Whitehorse	3,373	3,391	3,373	3,409
Regions	1,054	1,068	1,100	1,082
	<u>4,427</u>	<u>4,459</u>	<u>4,473</u>	<u>4,491</u>
Child Care Subsidy				
Child Care Centres				
Average Number of Children Claimed Per Month				
Whitehorse	335	335	355	330
Regional Services	115	110	120	110
	<u>450</u>	<u>445</u>	<u>475</u>	<u>440</u>
Family Day Homes				
Average Number of Children Claimed Per Month				
Whitehorse	110	105	110	100
Regional Services	20	15	15	10
	<u>130</u>	<u>120</u>	<u>125</u>	<u>110</u>
Child Care Centres and Family Day Homes				
Average Number of Children Claimed Per Month				
Whitehorse	445	440	465	430
Regional Services	125	125	115	120
	<u>570</u>	<u>565</u>	<u>580</u>	<u>550</u>

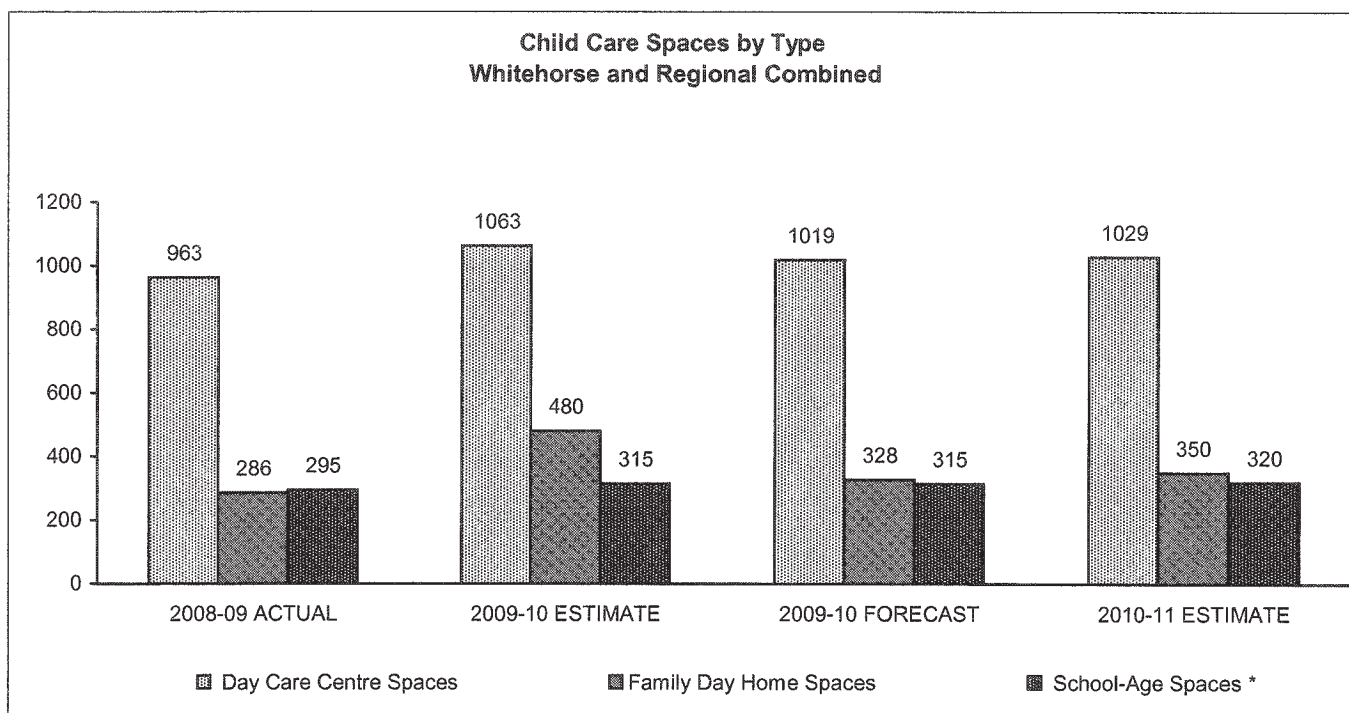
HEALTH AND SOCIAL SERVICES

FAMILY AND CHILDREN'S SERVICES Early Childhood and Prevention Services Child Care Services

STATISTICS

Child Care	2010-11 ESTIMATE	Comparable		
		2009-10 FORECAST	2009-10 ESTIMATE	2008-09 ACTUAL
Licensed Facilities (#)				
Day Care Centres Spaces				
Whitehorse	23 759	23 749	23 749	22 725
Regional Services	11 270	11 270	12 314	10 238
Family Day Homes Spaces				
Whitehorse	40 320	38 304	38 456	35 280
Regional Services	4 30	3 24	3 24	1 6
School-Age Programs Spaces *				
Whitehorse	275	270	270	255
Regional Services	45	45	45	40

* School-age spaces are included in the number of spaces in Day Care Centres and Family Day Homes.
School-age spaces includes full-time kindergarten.



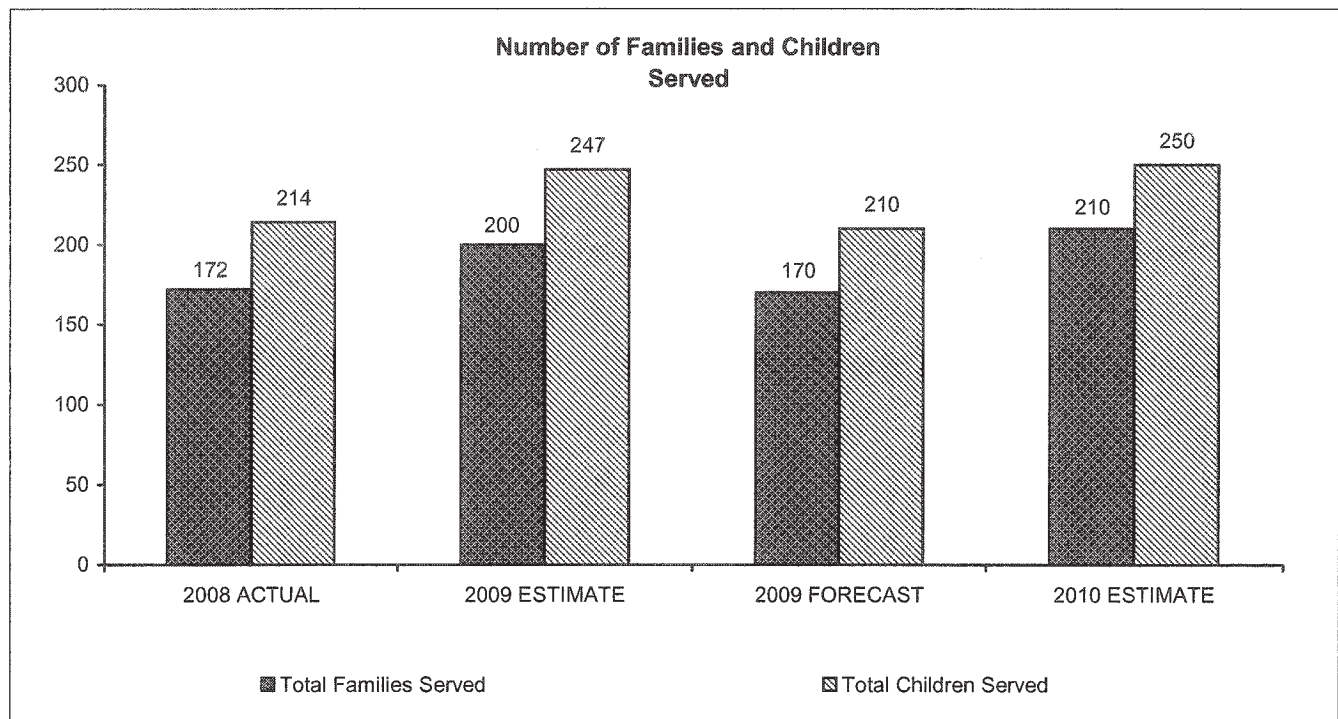
HEALTH AND SOCIAL SERVICES

FAMILY AND CHILDREN'S SERVICES Early Childhood and Prevention Services Healthy Families Program

STATISTICS

- The Healthy Families Program is designed to assist families of newborns, prenatally or at birth. In partnership with public health nurses, Healthy Families support workers provide in-home assistance and education, through regular home visits, to support families in being the best parents possible for their infants, so the infants receive the care and stimulation so crucial to their long-term well-being and healthy development.
- Healthy Family Support Workers can remain involved in a family's life until a child reaches school age. In other cases, only short term involvement is required.

Healthy Families	2010 ESTIMATE	Comparable		
		2009 FORECAST	2009 ESTIMATE	2008 ACTUAL
Total Families Served	210	170	200	172
Total Children Served	250	210	247	214



* Statistics are tracked by calendar year.

HEALTH AND SOCIAL SERVICES

FAMILY AND CHILDREN'S SERVICES

Youth Justice

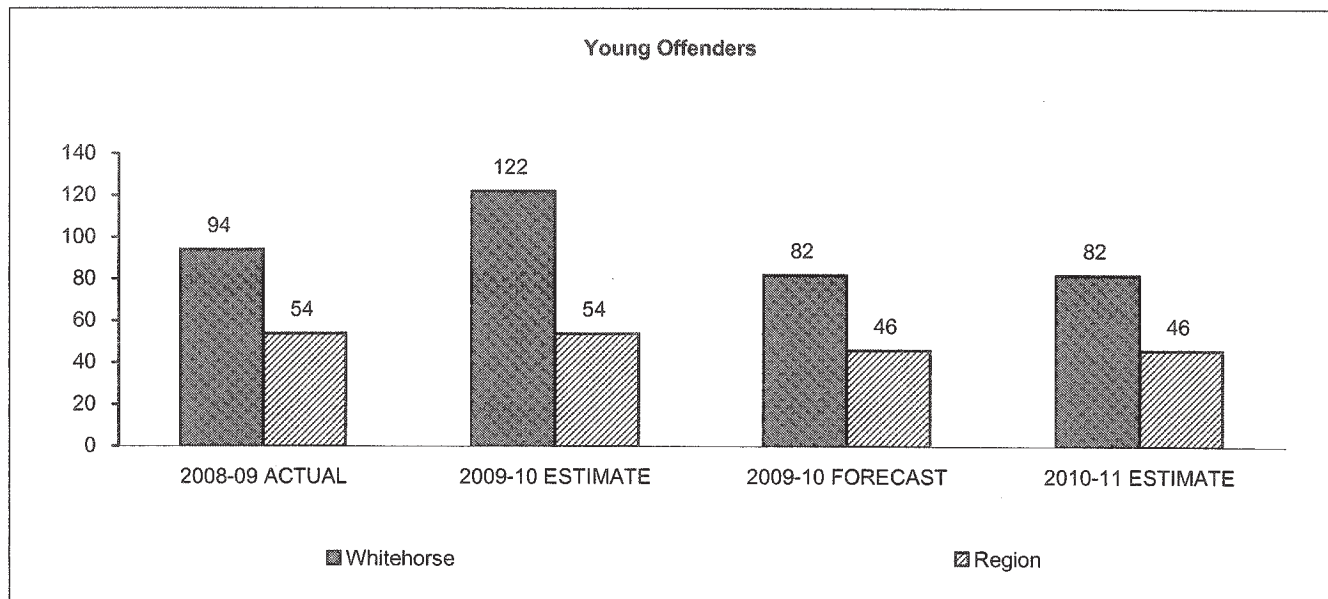
STATISTICS

Young Offenders	2010-11 ESTIMATE	Comparable		
		2009-10 FORECAST	2009-10 ESTIMATE	2008-09 ACTUAL
Yukon Population from age 12 to 17 inclusive				
Whitehorse	1,832	1,916	2,035	2,000
Region	553	592	602	631
Total	2,385	2,508	2,637	2,631

Population from Yukon Bureau of Statistics, at June of given fiscal year.

Young Offenders

Whitehorse	82	82	122	94
Region	46	46	54	54
Total	128	128	176	148



HEALTH AND SOCIAL SERVICES

FAMILY AND CHILDREN'S SERVICES Children's Assessment and Treatment Services Child Abuse Treatment Services

STATISTICS

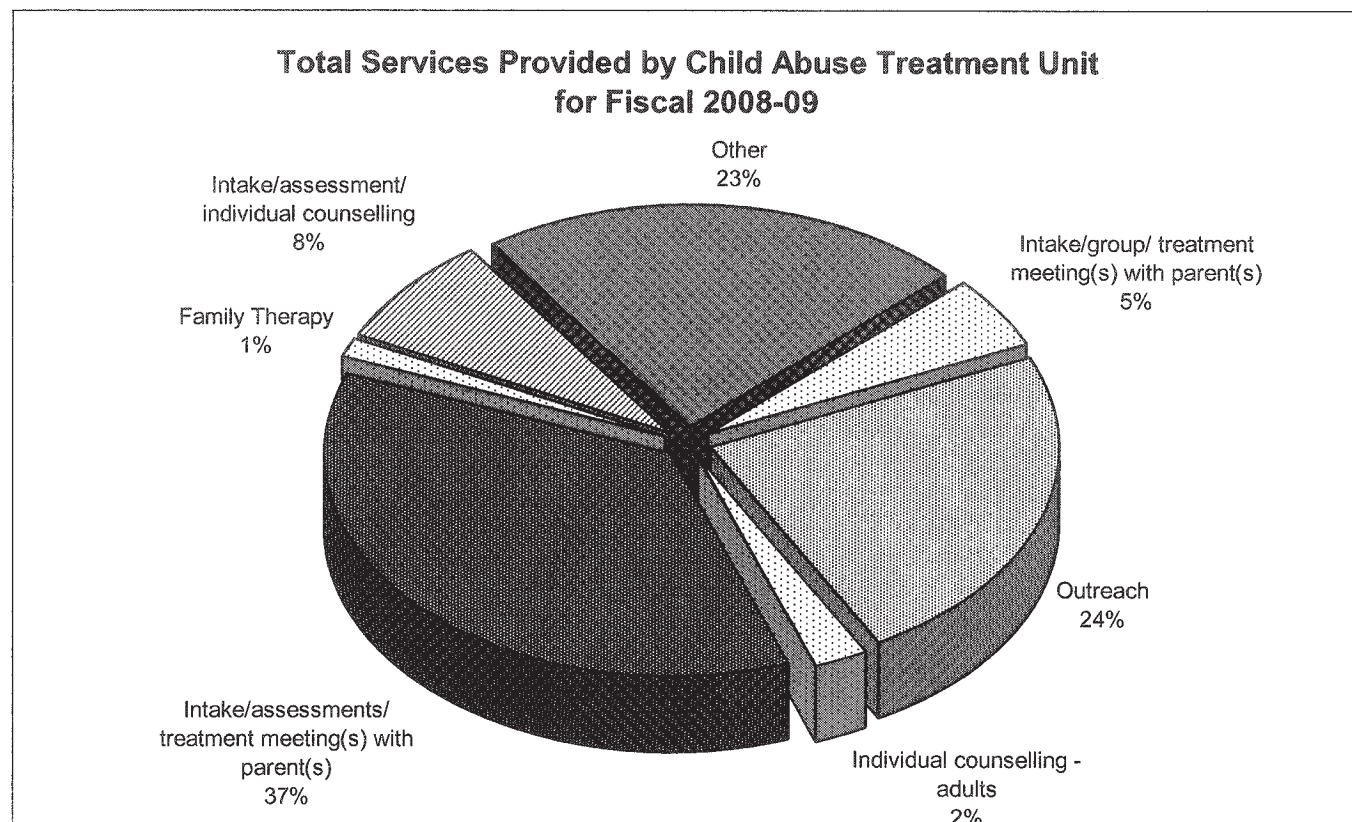
- The Child Abuse Treatment Unit provides services throughout Yukon.

Child Abuse Treatment Services	2010-11 ESTIMATE	Comparable		
		2009-10 FORECAST	2009-10 ESTIMATE	2008-09 ACTUAL
Number of people who received counselling *	220	205	275	211
* includes Adult and Child treatment and counselling.				

Supplementary Information (2008-09 figures)

By Region

Children from Whitehorse (#)	125
Children from Regional Communities (#)	86



HEALTH AND SOCIAL SERVICES

SOCIAL SERVICES

PROGRAM OBJECTIVE

- To ensure the provision of an integrated range of appropriate services to seniors, persons with disabilities, persons with inadequate financial resources and persons with substance abuse problems, so that they can achieve the greatest degree of independence, well-being and self-reliance possible.

O&M EXPENDITURES (\$000s)	2010-11 ESTIMATE	Comparable		
		2009-10 FORECAST	2009-10 ESTIMATE	2008-09 ACTUAL
Activities				
Program Management	1,904	1,821	1,438	1,597
Alcohol and Drug Services	4,344	4,344	4,015	3,545
Adult Services Unit	18,426	20,858	17,887	17,027
Seniors' Services and Adult Protection Unit	2,716	2,756	2,721	2,049
Total Social Services	27,390	29,779	26,061	24,218
Allotments				
Personnel	7,368	7,439	7,323	6,837
Other	3,771	3,989	3,456	3,617
Transfer Payments	16,251	18,351	15,282	13,764
Total Allotments	27,390	29,779	26,061	24,218

HEALTH AND SOCIAL SERVICES

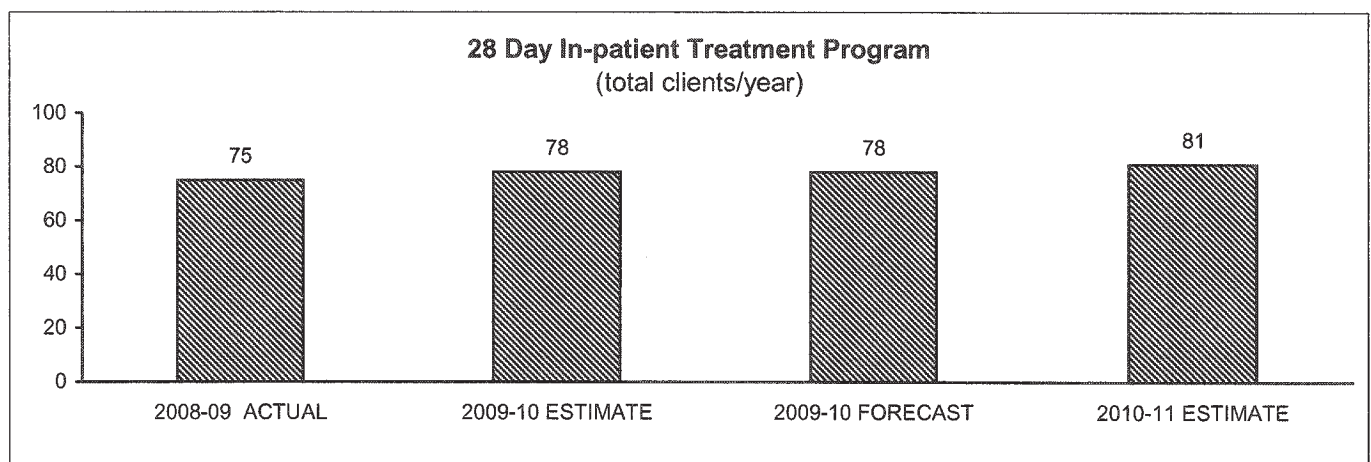
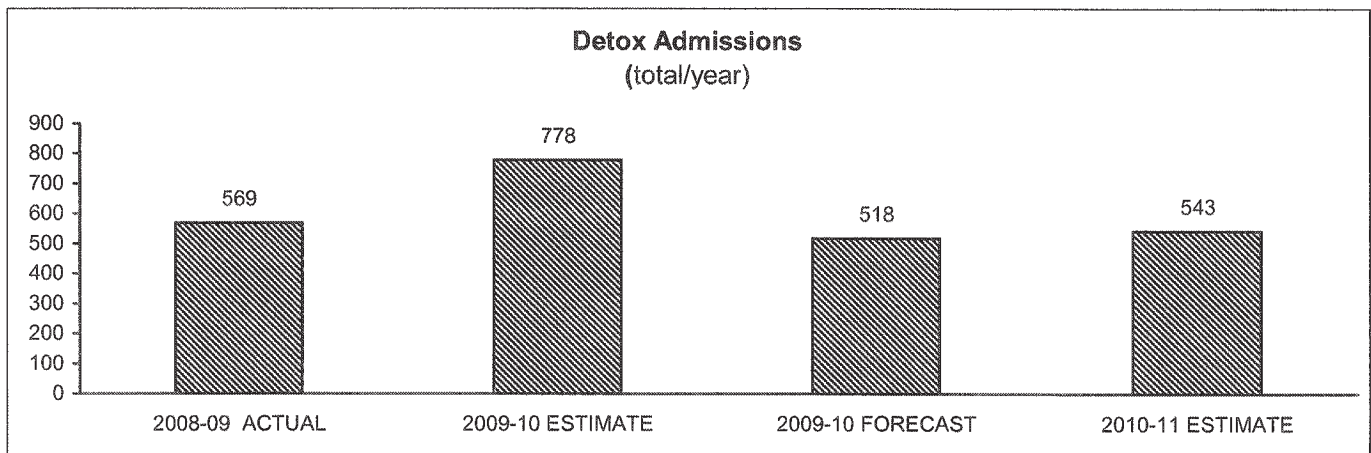
SOCIAL SERVICES Alcohol and Drug Services

STATISTICS

- Services relating to substance abuse are provided by the Alcohol and Drug Services Unit.

Alcohol and Drug Services	2010-11 ESTIMATE	Comparable		
		2009-10 FORECAST	2009-10 ESTIMATE	2008-09 ACTUAL
Detox Admissions - total - based on 10-bed capacity	543	518	778	569
Outpatient - total clients served per month	88	88	88	81
28 Day In-Patient Treatment Program - total clients per year*	81	78	78	75
Outreach/Prevention - Community Visits	111	111	125	73
Prevention - Training Events	122	122	160	169

* Nine 28-day programs per year



HEALTH AND SOCIAL SERVICES

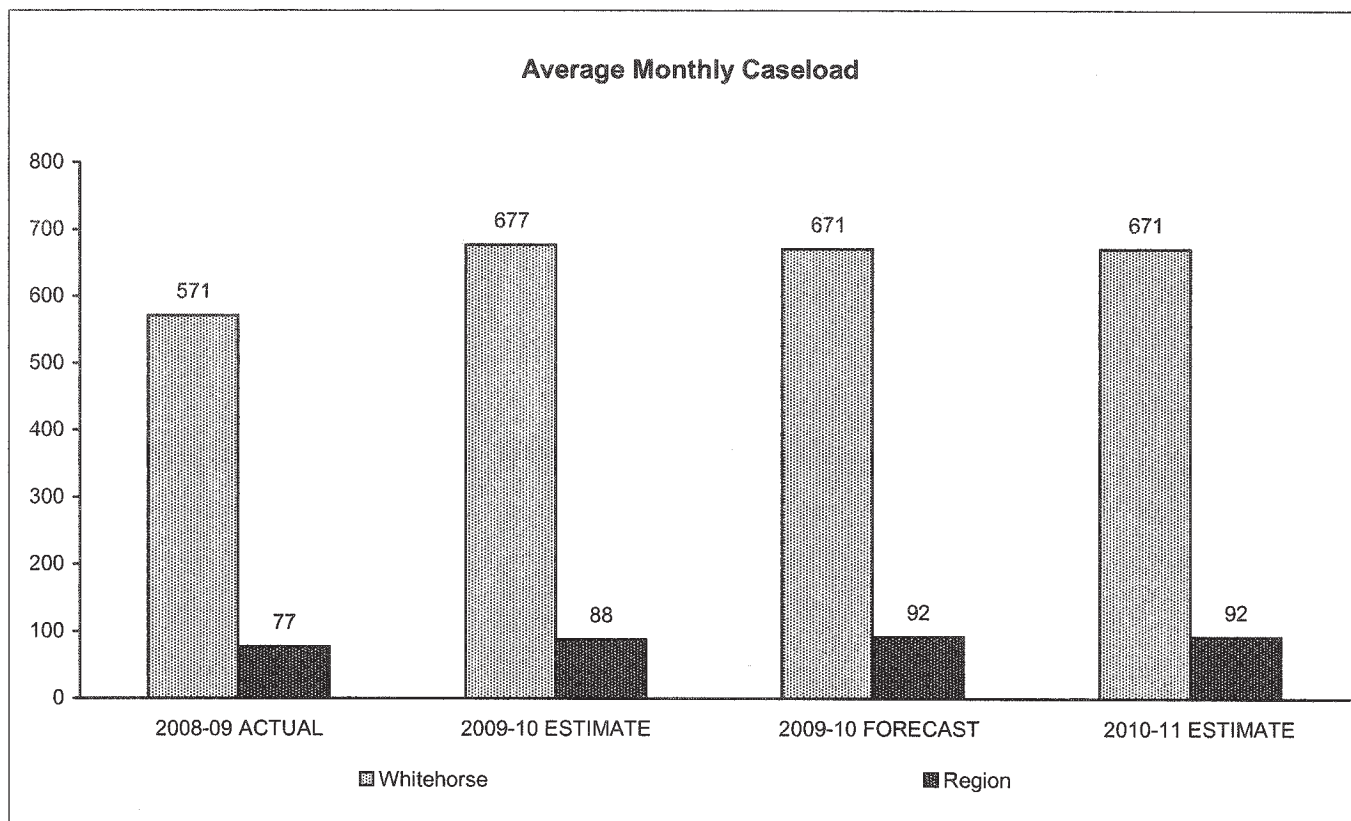
SOCIAL SERVICES Adult Services Unit Financial Services

STATISTICS

- Financial assistance services pursuant to the *Social Assistance Act* are provided by the Adult Services Unit in Whitehorse and by Regional Services personnel in rural communities.

Financial Services	2010-11 ESTIMATE	Comparable		
		2009-10 FORECAST	2009-10 ESTIMATE	2008-09 ACTUAL
Average Monthly Caseload: *				
Whitehorse	671	671	677	571
Region	92	92	88	77
Total	763	763	765	648

* Caseload reported is based on those cases where payments were made.



HEALTH AND SOCIAL SERVICES

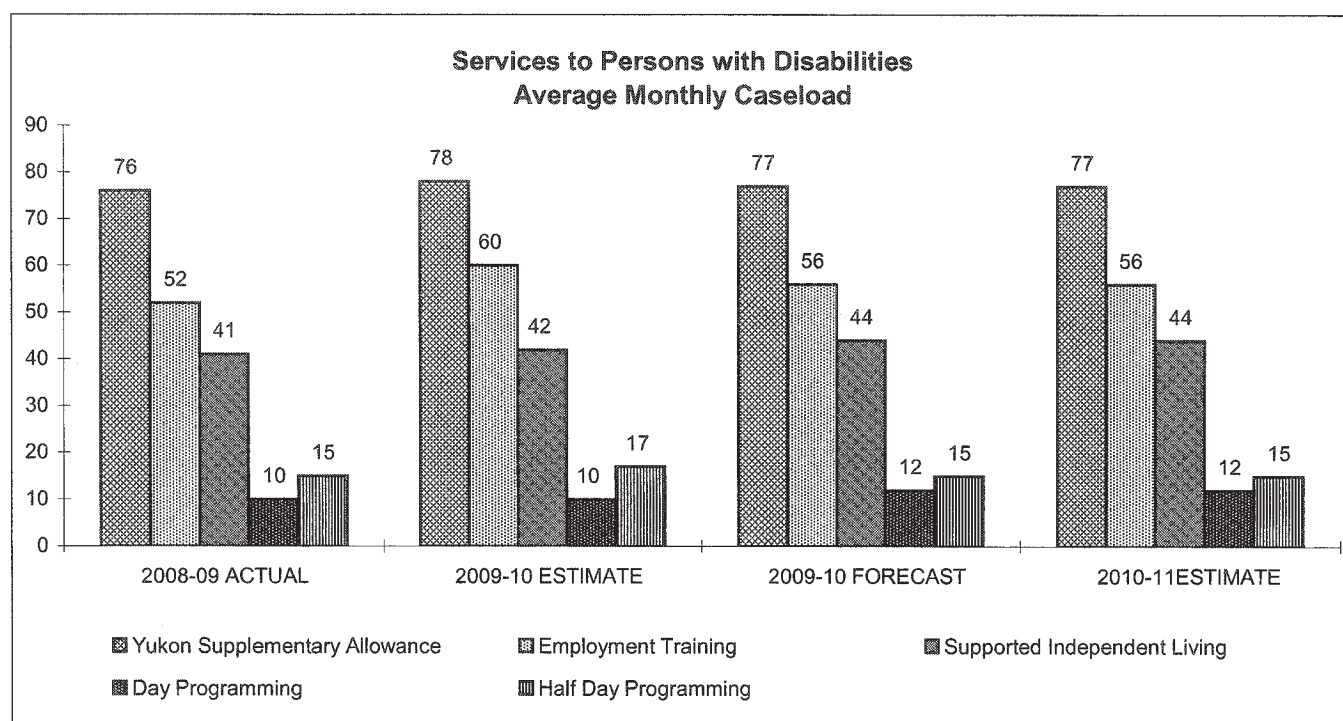
SOCIAL SERVICES Adult Services Unit Services to Persons with Disabilities

STATISTICS

- Rehabilitation services are provided by the Adult Services Unit in Whitehorse in conjunction with Regional Services personnel in rural communities.

Type of Service	2010-11 ESTIMATE	Comparable		
		2009-10 FORECAST	2009-10 ESTIMATE	2008-09 ACTUAL
Average Monthly Statistics ⁽¹⁾				
Services to Persons with Disability Unit Caseload	203	203	174	192
Clients receiving Yukon Supplementary Allowance	77	77	78	76
Clients in Employment Training	56	56	60	52
Supported Independent Living Clients	44	44	42	41
Clients in Day Programming	12	12	10	10
Clients in Half Day Programming	15	15	17	15

(1) Persons with disabilities are assessed for services required at the time of intake. The client may be referred to the service of employment training, supported independent living assistance, and/or day programming as required. In some cases clients with cognitive disabilities may require residential support services.



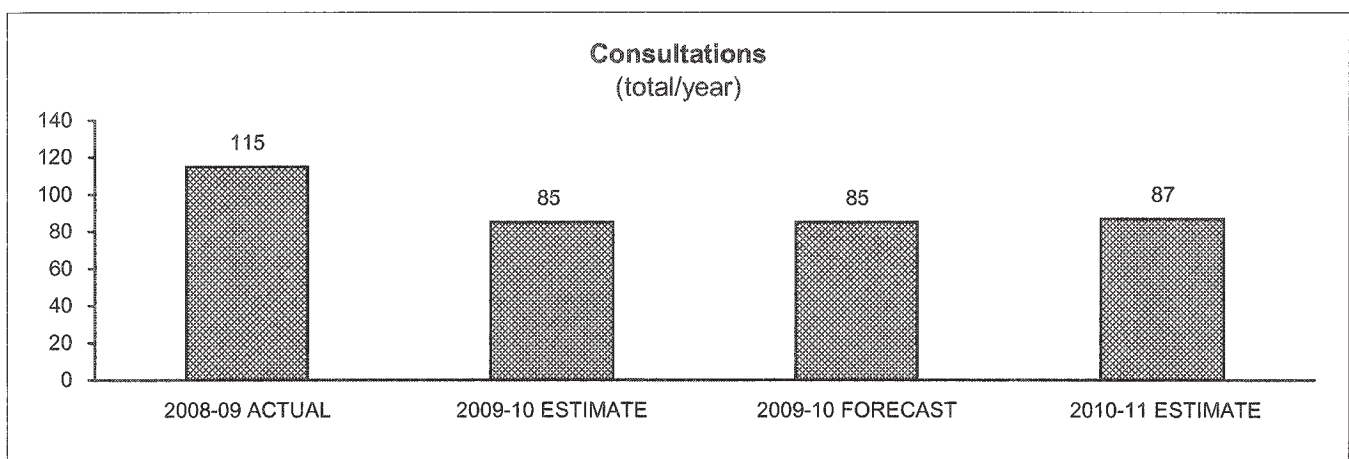
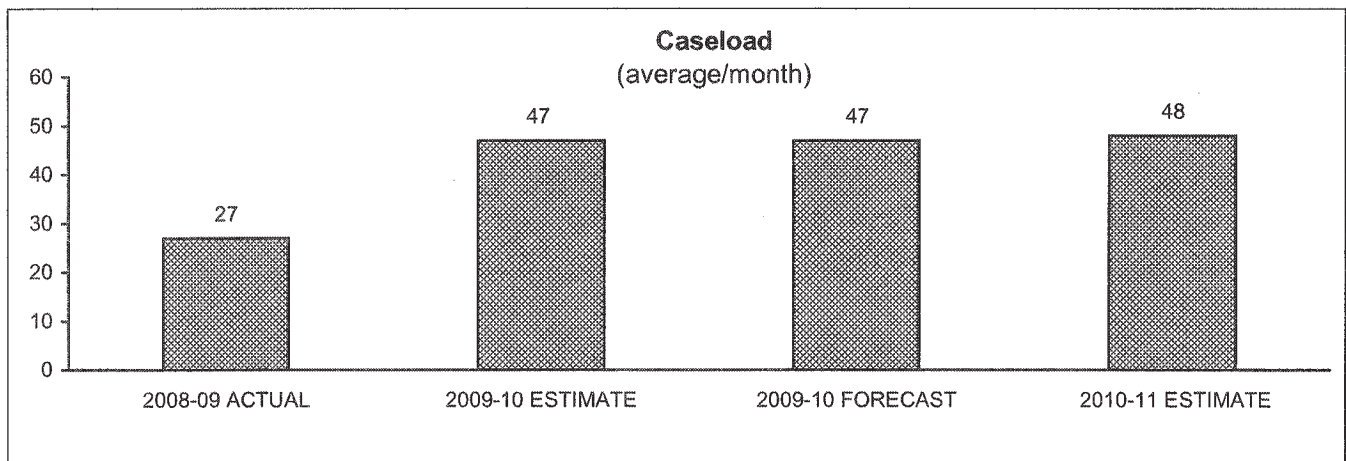
HEALTH AND SOCIAL SERVICES

SOCIAL SERVICES Seniors' Services and Adult Protection Unit

STATISTICS

- Services to adults and seniors are provided by the Seniors' Services and Adult Protection Unit in both Whitehorse and the communities. The unit also investigates and processes adult protection cases as per the *Decision Making, Support and Protection of Adults Act*.

Seniors' Services and Adult Protection	2010-11 ESTIMATE	Comparable		2008-09 ACTUAL
		2009-10 FORECAST	2009-10 ESTIMATE	
Caseload - average/month	48	47	47	27
Consultations ⁽¹⁾ - total per year	87	85	85	115



(1) Adult protection, care and consent, and guardianship consultations are provided to individuals, governments and other agencies. Information, support and referrals are also provided to seniors needing assistance in finding specific programs and services.

HEALTH AND SOCIAL SERVICES

CONTINUING CARE

PROGRAM OBJECTIVE

- To provide and coordinate services for individuals that require support, social and health services to live fully and independently or interdependently as valued members of their community.

O&M EXPENDITURES (\$000s)	2010-11 ESTIMATE	Comparable		
		2009-10 FORECAST	2009-10 ESTIMATE	2008-09 ACTUAL
Activities				
Program Management	1,488	1,527	1,527	1,510
Extended/Complex Care	16,041	15,861	15,177	14,695
Intermediate and Community Care	10,040	9,823	9,541	8,477
Total Continuing Care	27,569	27,211	26,245	24,682
Allotments				
Personnel	22,902	22,542	22,124	20,553
Other	4,153	4,155	3,607	3,602
Transfer Payments	514	514	514	527
Total Allotments	27,569	27,211	26,245	24,682

HEALTH AND SOCIAL SERVICES

CONTINUING CARE Intermediate and Community Care

STATISTICS

	2010-11 ESTIMATE	2009-10 FORECAST	2009-10 ESTIMATE	2008-09 ACTUAL
<u>Intermediate Care</u>				
Macaulay Lodge				
Number of Beds Available	45	45	45	45
Permanent	42	42	42	42
Respite	3	3	3	3
Average Occupancy Rate	98%	98%	98%	94%
Average Number of People on Waiting List	12	10	8	8
Average Number of Months on Waiting List	8.0	6.0	5.0	4.7
Average Length of Stay (years)	2.5	2.5	2.7	2.2
Number of Permanent Admissions	22	22	22	25
Number of Respite Admissions	25	25	25	26
Average Age				79.2
<u>Intermediate and Community Care</u>				
Home Care				
Whitehorse	545	536	646	527
Region	200	182	185	182
Total Caseload	745	718	831	709
McDonald Lodge - Dawson City				
Number of Beds Available	11	11	11	11
Average Occupancy Rate	88%	88%	88%	88%
Average Number of People on Waiting List	0	1	0	1
Average Number of Months on Waiting List	0	1	0	1
Average Length of Stay (years)				
Permanent	1.7	1.7	1.7	1.6
Respite	0.8	0.8	0.2	1.0
Number of Permanent Admissions	3	3	2	3
Number of Respite Admissions	3	3	3	3
Average Age				77.5

HEALTH AND SOCIAL SERVICES

CONTINUING CARE Extended/Complex Care

STATISTICS

Copper Ridge Place	2010-11 ESTIMATE	Comparable		
		2009-10 FORECAST	2009-10 ESTIMATE	2008-09 ACTUAL
Number of Beds Available	96	96	96	96
Extended Care - Seniors (Units C,D,E,F)				
- permanent	45	45	45	45*
- respite	3	3	3	3
Occupancy Rate**	90%	90%	94%	89%
Extended Care - Adults				
- permanent	17	17	17	17
- respite	1	1	1	1
Occupancy Rate**	90%	90%	90%	85%
Extended Care - Children				
- permanent	4	4	4	4
- respite	2	2	2	2
Occupancy Rate	50%	50%	60%	51%
Dementia Care				
- permanent	21	21	21	21
- respite	3	3	3	3
Occupancy Rate**	95%	95%	96%	93%
Average Occupancy Rate**	90%	90%	90%	87%
Average Number of Persons on Waiting List	5	5	2	4
Average Number of Months on Waiting List	3	2	1	2
Average Length of Stay (years)				
- permanent	2.4	2.4	2.4	2.7
- respite/assessment	0.20	0.20	0.20	0.16
Number of Permanent Admissions	25	25	30	25
Number of Respite Admissions	25	25	20	20
Average Age				
Seniors Unit				81
Adult Unit				57
Children's Unit				12
Dementia Care				79

* 2008-09 Unit D re-opened mid January, 2009 (2.5 months of fiscal year).

** Although the facility may be considered full, there will always be some vacancy due to residents' change over which requires room preparation and upgrades.

HEALTH AND SOCIAL SERVICES

HEALTH SERVICES

PROGRAM OBJECTIVE

- To foster an environment in which communities, families and individuals can achieve and maintain optimal health, through health promotion and protection, disease prevention, and provision and support of health services.

O&M EXPENDITURES (\$000s)	2010-11 ESTIMATE	Comparable		
		2009-10 FORECAST	2009-10 ESTIMATE	2008-09 ACTUAL
Activities				
Program Management	499	17,685	11,694	10,271
Insured Health, Hearing Services and Vital Statistics	60,473	60,854	58,360	62,949
Community Health	8,539	8,114	8,223	7,525
Community Nursing	13,224	14,337	13,180	12,936
Total Health Services	82,735	100,990	91,457	93,681
Allotments				
Personnel	15,764	20,442	18,497	17,626
Other	43,391	50,188	45,210	48,579
Transfer Payments	23,580	30,360	27,750	27,476
Total Allotments	82,735	100,990	91,457	93,681

HEALTH AND SOCIAL SERVICES

HEALTH SERVICES Insured Health, Hearing Services and Vital Statistics

STATISTICS

- The Health Care activity is comprised of Health Care Insurance, Hospital Insurance Services, Travel for Medical Treatment, Chronic Disease and Disability program, Pharmacare and Extended Health Benefits for Seniors.

Health Care	2010-11 ESTIMATE	Comparable		
		2009-10 FORECAST	2009-10 ESTIMATE	2008-09 ACTUAL
Yukon Health Care Insurance Plan				
Subscribers (at March 31) (#)	35,000	34,500	34,500	33,927
Insured Services (#)				
Physician Services ⁽¹⁾				
In Yukon	240,000	235,000	240,000	226,791
Out-of-Territory	35,000	34,500	40,500	33,960
Services Reimbursed to Members	300	300	200	301
⁽¹⁾ Physician Services exclude labs, on call, and standby numbers.				
Whitehorse General Hospital				
Patient Days (excludes newborns)	15,200	15,000	15,000	13,933
Patient Admissions	3,450	3,400	3,300	3,363
Outpatient Visits				
Emergency Room	24,500	25,000	24,000	23,896
All Others	54,000	52,000	56,000	50,983
Total	78,500	77,000	80,000	74,879
Surgical Cases				
Day Surgery	1,950	1,900	1,950	1,889
In-patient	700	700	700	690
Total	2,650	2,600	2,650	2,579
Yukon Resident Hospitalizations				
Hospital Days of Care (#)				
Out-of-Yukon Facilities	8,400	8,300	8,000	8,288
Average Length of Stay (days)				
Out-of-Yukon Facilities	8.0	8.0	8.0	8.0
Outpatient Visits				
Out-of-Yukon Facilities	10,500	10,400	10,400	10,351

HEALTH AND SOCIAL SERVICES

HEALTH SERVICES

Insured Health, Hearing Services and Vital Statistics

STATISTICS

- Health Benefit Programs are reported per fiscal year based on the prescription fill date. This program does not include numbers for third party insured individuals, such as First Nation individuals who received benefit coverage through Non-Insured Health Benefits, Health Canada or individuals with a Yukon Worker's Compensation Health and Safety Board claim.

Health Care	2010-11 ESTIMATE	Comparable		
		2009-10 FORECAST	2009-10 ESTIMATE	2008-09 ACTUAL
Pharmacare Program Subscribers (#)	2,650	2,600	2,650	2,560
Chronic Disease Program Subscribers (#)	2,050	2,000	2,250	1,983
Children's Drug and Optical Program (CDOP) Subscribers (#)	325	320	345	314

SUPPLEMENTARY INFORMATION (2008-09 figures) ⁽¹⁾

Drug Plan Statistics	Pharmacare	Chronic Disease	CDOP	All Programs
Number of Clients on March 31, 2009	2,560	1,983	314	4,857
Number of Clients submitting claims	2,280	1,461	189	3,930
Total number of prescriptions paid	58,841	25,343	426	84,610
Total prescription cost (includes fill fee)	\$3,590,945	\$2,686,208	\$11,968	\$6,289,121
Average prescription cost	\$61.03	\$105.99	\$28.09	\$74.33
Total ingredient cost (minus fill fee)	\$3,095,764	\$2,485,616	\$8,541	\$5,589,921
Average ingredient cost	\$52.61	\$98.08	\$20.05	\$66.07

⁽¹⁾ Note: The supplementary information above includes prescription medications only.
Other program benefits are not reflected.

HEALTH AND SOCIAL SERVICES

HEALTH SERVICES

Insured Health, Hearing Services and Vital Statistics

STATISTICS

- Travel for Medical Treatment numbers are reported per fiscal year based on the date of the service. This program does not include numbers for third party insured individuals, such as First Nation individuals who received benefit coverage through Non-Insured Health Benefits, Health Canada or individuals with a Yukon Workers' Compensation Health and Safety Board claim.

		Comparable		
	2010-11	2009-10	2009-10	2008-09
Health Care	ESTIMATE	FORECAST	ESTIMATE	ACTUAL
Travel for Medical Treatment within Yukon				
Number of Clients *	1,150	1,125	1,125	1,130
Mileage Reimbursements	2,300	2,250	2,300	2,237
Scheduled Air Flights	80	80	52	79
Air Medevac Flights ⁽¹⁾	165	160	120	155
Total	2,545	2,490	2,472	2,471

Travel for Medical Treatment outside of Yukon

Number of Clients *	1,875	1,850	1,750	1,836
Mileage Reimbursements	125	120	123	116
Scheduled Air Flights	3,325	3,300	2,350	3,281
Air Medevac Flights ⁽¹⁾	165	160	175	161
Total	<u>3,615</u>	<u>3,580</u>	<u>2,648</u>	<u>3,558</u>

⁽¹⁾ Air Medevac (medical evacuation) Flights are a count of medevac services for Yukon Health Care Insurance Plan Members, excluding third party insured individuals.

Counts of reimbursements and trips are calculated as round trips.

* A client may travel multiple times in a year by various means, but is counted only once for the number of clients.

HEALTH AND SOCIAL SERVICES

HEALTH SERVICES

Insured Health, Hearing Services and Vital Statistics

STATISTICS

- Yukon Hearing Services provides a wide range of services in the prevention, identification, assessment and management of hearing loss across the Yukon. Specific services include: diagnostic hearing assessments for adults, children and infants; kindergarten school screenings, newborn hearing program, industrial screenings and health fairs; consultations for teachers and health professionals; services for workers' compensation programs across Canada, veterans and First Nations; community services to Watson Lake, Dawson City, Child Development Centre, Macaulay Lodge, Copper Ridge Place and Whitehorse General Hospital; and selection, dispensing, follow-up and repair of hearing aids on a cost recovery basis.

Hearing Services	2010-11 ESTIMATE	Comparable		
		2009-10 ⁽²⁾ FORECAST	2009-10 ESTIMATE	2008-09 ACTUAL
Hearing Assessments	800	780	615	638
Child Hearing Assessments	450	430	350	294
Dispense Appointments ⁽¹⁾	300	275	225	243
Repair Appointments ⁽¹⁾	825	850	800	760
Auditory Brain Stem Response	135	130	90	69
Universal Neonatal Screening	375	350	450	469
Industrial Screening ⁽³⁾	170	165	160	160

⁽¹⁾ May represent one or two hearing aids or ears.

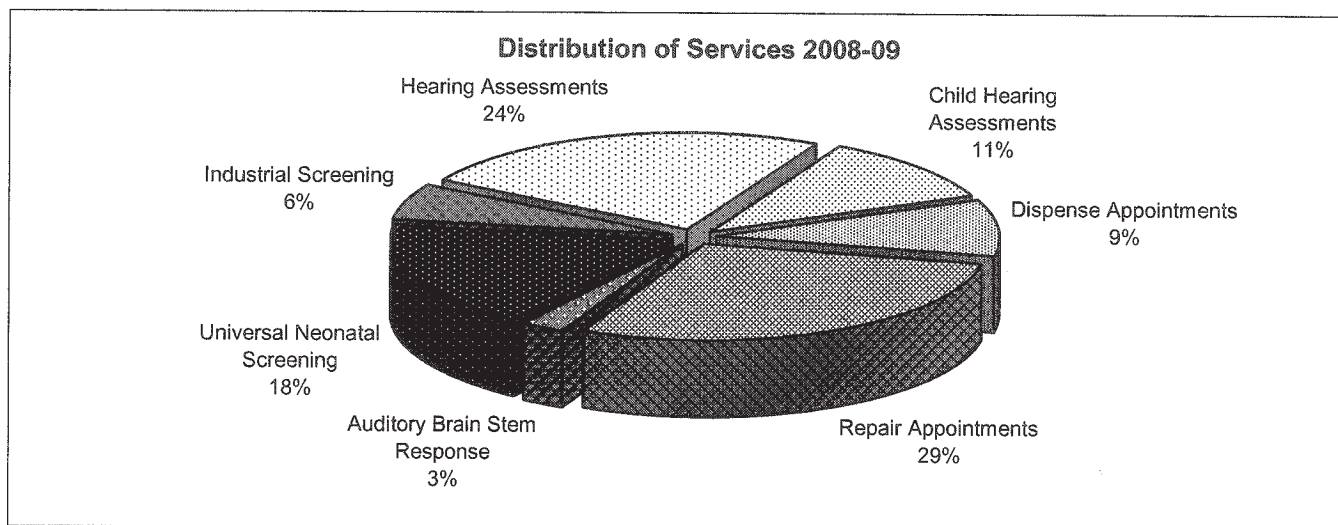
⁽²⁾ 2009-10 increases in forecast figures are due to availability of additional audiologist.

⁽³⁾ Industrial Screenings are a new service provided by Hearing Services.

Notes:

Hearing aids are sold by the clinic at wholesale cost.

There is no cost to the government, as this item is recoverable from the client or their insurer.



HEALTH AND SOCIAL SERVICES

HEALTH SERVICES

Insured Health, Hearing Services and Vital Statistics

STATISTICS

- The Registrar of Vital Statistics is responsible for the registration of all Yukon births, deaths, and marriages.
- In compliance with procedures followed by Vital Statistics branches nationwide, statistics are reported on a calendar year basis (January 1 – December 31), and by using date of birth or date of death, not date of certification.

Vital Statistics	2010 ESTIMATE	Comparable		2008 ACTUAL
		2009 FORECAST	2009 ESTIMATE	
Births	360	375	365	361
Marriages	145	140	145	133
Deaths	190	190	180	193

Notes:

Totals include non-Yukoners who have given birth, died or been married in the Yukon.

Birth Information (2008)

Age of Mother

=< 19	28
20 - 29	153
30 - 39	167
40+	13

Birth weight (grams)

< 2500	10
2500 - 4000	283
4000 +	68

Residency

Whitehorse	259
Regions	97
Total Yukon	356
Other	5

Gender

Male	181
Female	180

Ethnicity

Yukon First Nations	94
Yukon Other	262
Yukon Total	356
Other	5

Death Information (2008)

Age of Deceased

0 - 19	3
20 - 29	5
30 - 39	4
40 - 49	22
50 - 59	24
60 - 69	35
70 - 79	42
80 - 89	36
90 +	22

Residency

Whitehorse	114
Regions	64
Total Yukon	178
Other	15

Gender

Male	116
Female	77

Ethnicity

Yukon First Nations	59
Yukon Other	119
Yukon Total	178
Other	15

HEALTH AND SOCIAL SERVICES

HEALTH SERVICES Community Health Health Programs

SUPPLEMENTARY INFORMATION

- Community Health Programs delivers and funds a variety of community health services throughout the Yukon. Programs delivered by the Department of Health and Social Services are:
 - Yukon Communicable Disease Control Program
 - Yukon Children's Dental Program
 - Environmental Health Services
 - Mental Health Services
 - Health Promotion

Funded Activities include:

Blood Ties Four Directions - to provide prevention, education, and support services to prevent the spread of blood borne infectious disease, including HIV and Hepatitis C.

Yukon College - to publish Tracks newsletter.

Many Rivers Counselling & Support Services - to provide a range of counselling services and educational activities through its main office in Whitehorse, satellite offices in Dawson City, Haines Junction, Watson Lake, and itinerant services to selected communities, and to support the operation of the Outreach Van in Whitehorse and Youth Outreach Program.

Second Opinion Society - to provide a drop-in centre, supportive peer counselling and practical assistance to persons who have had, or are experiencing, mental health problems.

Liard Basin Task Force - to support a Youth Counsellor position which provides clinical counselling services to at-risk youth and their families, and consultation services to education and other community resources.

HEALTH AND SOCIAL SERVICES

HEALTH SERVICES Community Health Mental Health Services

STATISTICS

- **Outpatient Mental Health Services**

Mental Health Services provides assessment, treatment, consultation and referral services to individuals experiencing a range of mental health problems. Professional staff include mental health clinicians, nurses, and mental health support workers.

Mental Health Services provides services to three groups of clients: a) Adult clients diagnosed with serious and persistent mental illnesses, including clients under the Yukon Review Board; b) Adult clients who experience other diagnosable mental health problems that are acute or episodic in nature; and c) children and youth with a range of mental health problems.

Mental Health Services also engages in a number of community mental health activities including community development, training, public awareness, and policy and program development in areas which have an impact on mental health.

- **Hospital-based Mental Health Services**

Whitehorse General Hospital provides in-patient services to patients admitted for psychiatric reasons. Mental Health Services staff may also participate in the care of these patients.

Mental Health Care	2010-11 ESTIMATE	2009-10 FORECAST	2009-10 ESTIMATE	2008-09 ACTUAL
Outpatient Mental Health Services				
Number of Referrals ⁽¹⁾	325	320	350	302
Clients Seen ⁽²⁾	375	375	375	387
Direct Clinical Hours ⁽³⁾	7,000	7,000	5,500	6,105
Direct and Indirect Clinical Hours ⁽⁴⁾	10,000	10,000	7,800	9,180
Hospital-based Mental Health Services ⁽⁵⁾				
Patient Admissions ⁽⁶⁾	250	208	165	278
Patient Days	1,500	1,480	1,320	1,765
Transfers Out	10	10	7	11
Emergency Assessments - no admission	500	540	375	514

(1) This includes all referrals to Mental Health Services and to the itinerant Child Psychiatry Clinic.

(2) The number of clients also includes those seen by itinerant child psychiatrist.

(3) Clinical hours includes screening, assessment and individual and group treatment and psychiatric assessment and follow-up time, including services provided via tele-videoconferencing. The significant increase in hours from 2008-09 Actual to 2009-10 Forecast represents expanded programming to young adults in Whitehorse and rural Yukon diagnosed with a psychotic disorder, persons with complex needs, and persons under Yukon Review Board orders. The increase reflects the expanded role of mental health support workers in Whitehorse and rural Yukon, in addition to hours provided by contracted psychiatrists.

(4) Indirect services include consultations with colleagues, case management activities, and clinical consultation.

(5) Information was provided by Whitehorse General Hospital. Costs associated with hospital-based services are reflected in the Insured Health and Hearing Services budget.

(6) Patient admissions includes both voluntary and involuntary admissions.

HEALTH AND SOCIAL SERVICES

HEALTH SERVICES Community Health Dental Health

STATISTICS

- Dental Health is responsible for the Yukon Children's Dental Program which provides diagnostic, preventative, and restorative dental procedures to children from preschool up to and including grade eight in Whitehorse (where there are resident dentists) and up to grade twelve in all other communities.

Yukon Children's Dental Program	2010-11 ESTIMATE	Comparable		
		2009-10 FORECAST	2009-10 ESTIMATE	2008-09 ACTUAL
Whitehorse				
Dental Enrollment ⁽¹⁾	1,913	1,687	1,913	1,522
Rural				
Dental Enrollment ⁽¹⁾	778	746	778	617
Preschool/Homeschool Program ⁽²⁾				
Number of Children	350	355	240	356
Number of Clinics	15	14	12	14
Presentations to Parents	20	14	40	2
Road Trips to Rural Communities ⁽³⁾				
Dental Therapists	48	48	35	30
Dentists	28	26	30	27
Days of Service to Adults in Rural Yukon	140	138	194	125
Presentations and Health Fairs ⁽⁴⁾	40	42	10	39

(1) Figures reported are per school year.

(2) Figures reported are per fiscal year.

(3) The Yukon Children's Dental Program reimburses dentists in private practice for travel and accommodation expenses incurred when traveling to rural Yukon.

(4) Increase in 2008-09 Actual and 2009-10 Forecast is due to activities funded under the time-limited Pan-Territorial Oral Health Initiative.

HEALTH AND SOCIAL SERVICES

HEALTH SERVICES Community Health Environmental Health Services

STATISTICS

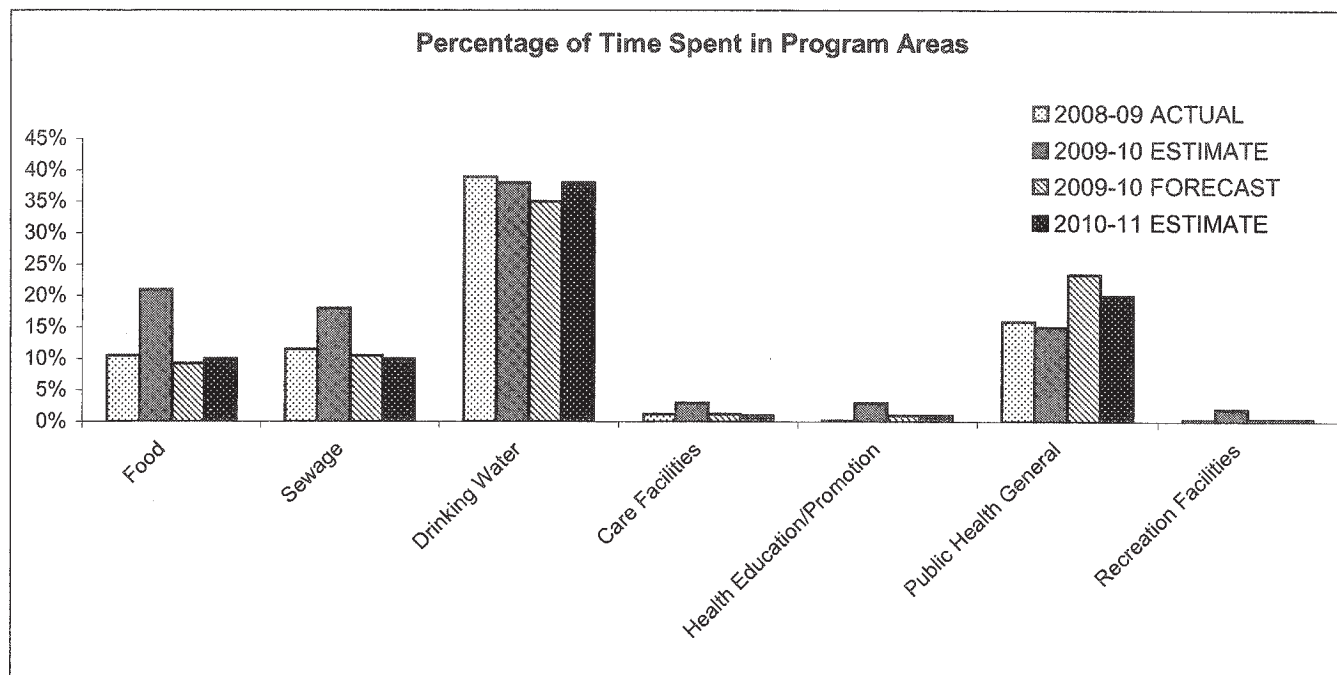
- Environmental Health Services (EHS) promotes care for the environment in the interest of human health. Working in conjunction with the Chief Medical Officer of Health, Environmental Health Officers provide services to individuals, businesses and government. EHS provides consultation and educational services; and engages in inspection, surveillance, audits and enforcement activities in support of the regulatory program.

Environmental Health	2010-11 ESTIMATE	Comparable		
		2009-10 FORECAST	2009-10 ESTIMATE	2008-09 ACTUAL
Client Contacts ⁽¹⁾	12,000	11,500	12,500	12,393
Inspections/Audits ⁽¹⁾	400	386	475	407
Water Tests ⁽²⁾	6,500	6,300	5,500	5,263
Sewage Permits/Finals/Retentions ⁽³⁾	300	315	350	428
Premises Permits	260	259	150	254
Health Education/Promotion	85	85	71	85

(1) The reduction in client contacts, inspections and audits in 2009-10 is due to shifts in program priorities, such as to drinking water and mould, which required increased time.

(2) The significant increase in the number of water samples submitted for testing is a result of increased attention to drinking water quality, and implementation of the *Drinking Water Regulation*.

(3) The decrease in the number of sewage permits, finals, and retentions is due to a lower number of country residential lots requiring testing/permitting.



HEALTH AND SOCIAL SERVICES

HEALTH SERVICES Community Health Health Promotion Unit

The Health Promotion Unit provides or supports evidence-based, targeted health promotion and illness prevention programs and activities, to increase public awareness, support healthier decision-making and lifestyles, support professional development and collaboration, and create and promote supportive environments.

SUPPLEMENTARY INFORMATION - HIGHLIGHTS

- **Tobacco Legislation**

The Smoke-free Places Act came into effect on May 15, 2008. A tobacco education and enforcement officer was hired to assist the public and businesses in understanding and complying with the Act. An educational package was developed and distributed to all employers, and consultation documents developed and distributed to provide input into proposed regulations.

- **Helping Smokers become Smoke-free**

Smokers interested in quitting can enroll in a self-directed program and receive a backpack filled with helpful tools and resources and supportive phone calls. An enhanced cessation program that includes nicotine replacement therapy subsidies and 4-session behavioural counselling has been developed and is currently accepting enrollments.

- **Helping Young People Resist tobacco Use**

Smoke Screening - a media awareness project for Grades 5 – 12 – was offered to Yukon classrooms for the sixth year. 786 students participated. In 2009-10, over 400 students participated in interactive educational activities and had the opportunity to learn and practice refusal skills. The Yukon Youth Tobacco Summit took place October 24-25, 2009. 17 youth in grades 8-12 from schools in Whitehorse and several rural communities participated in workshops on tobacco education, social advocacy, critical thinking and proposal development. Teams returned to their home schools/communities to implement projects developed at the Summit with financial support from the Health Promotion Unit.

- **Sexual Health**

Sexual health social marketing campaign included: development of Sexual Health Education Teaching Resource, "Healthy Transitions", for grades 4-7, with teacher training and parent workshops; new website for teens, bettertoknow.yk.ca; sexual health books for grades 7/8 adapted from Nova Scotia; production of Yukon Birth Control Guide; Questions and Answers on Sexual Health book for Yukon, 3rd edition released; "getatest.ca" media campaign to encourage Yukoners to get tested for sexually transmitted infections. Specialty condom campaigns continued, with requests from 5 other jurisdictions to use Yukon designs. YK-STYLE sexual health information line continued for Yukoners of all ages. Sexual health classes and workshops for high school students, youth leaders and other organizations .

HEALTH AND SOCIAL SERVICES

HEALTH SERVICES Community Health Health Promotion Unit

SUPPLEMENTARY INFORMATION - HIGHLIGHTS (cont'd)

- **Healthy Eating**

A Yukon Nutrition Framework is being developed to guide and focus nutrition programming in the Yukon and generate collaboration and partnerships in nutrition issues. The framework is nearing completion. A resource entitled "Take Back the Dinner Hour" has been developed and distributed to parents of grade school and preschool children throughout the territory. Additional resources being developed are Teacher Education bulletins on Energy Drinks and Using Food as a Reward, support materials for Drop the Pop and the My Amazing Cookbook for Recreation & Parks Association of the Yukon "Canada Gets Active" project. Yukon has initiated a Food Costing project led by the Community Dietician and Yukon Bureau of Statistics. Data was collected and analyzed in 2009. The Yukon 'Drop the Pop' has changed for 2010. The program will be enhanced to offer all Yukon schools grants to design and develop a healthy eating/healthy beverage initiative for their school. Presentations on healthy eating continue to be offered to schools and community groups.

- **School Health**

The Health Promotion Unit continued to provide in-school presentations at many schools throughout the Yukon on a range of topics including healthy sexuality, tobacco education/prevention and healthy eating. The Unit is partnering with the Department of Education to organize a "Resiliency and Transitions Advisory Committee" that seeks to build collaboration and increase communication among the range of professionals and agencies who seek to maximize health and learning outcomes for Yukon students.

- **Injury Prevention**

A preliminary analysis of Yukon's information in the National Ambulatory Care Reporting System to inform injury prevention priorities was completed and will inform the development of a surveillance framework for sustained and systematic injury surveillance in the Yukon. The Health Promotion Unit partnered with the local mountain biking club to promote helmet use at 3 special events and on an ongoing basis. 100 helmets were distributed to local youth. The Unit is also partnering with Home Care to implement 2 pilot projects (1 rural, 1 in Whitehorse) aimed at reducing falls among seniors.

HEALTH AND SOCIAL SERVICES

HEALTH SERVICES Community Health Yukon Communicable Disease Control

STATISTICS

- Yukon Communicable Disease Control (YCDC), in collaboration with the Chief Medical Officer of Health and Public Health Agency of Canada, is responsible for the prevention, monitoring, and control of all infectious diseases (both vaccine and non-vaccine preventable) throughout the Yukon. This work is carried out by Infectious Disease Nurses who provide assessment, screening, test interpretation and treatment, and engage in education (including promotion), policy and program development and epidemiological analysis. The staff of YCDC work closely with physicians and nurse practitioners throughout the Yukon and several government and non-governmental agencies to reduce the incidence and spread of communicable diseases.

		Comparable		
	2010-11	2009-10	2009-10	2008-09
Communicable Disease Control Unit	ESTIMATE	FORECAST	ESTIMATE	ACTUAL
Medical Tests Conducted				
Sexually Transmitted Diseases	4,775	4,750	4,701	4,679
Communicable Diseases ⁽¹⁾	7,000	9,000	5,700	5,819
Reproductive Health ⁽²⁾	38	35	27	28
Tuberculosis ⁽³⁾	2,393	2,215	2,393	2,148
Total Number of Tests	14,206	16,000	12,821	12,674
Patient Contacts				
Clinic	2,700	2,625	2,683	2,551
Outreach ⁽⁴⁾	774	750	715	660

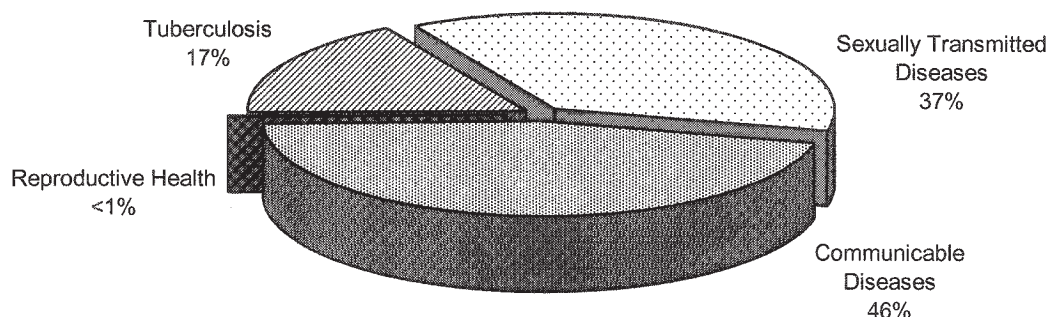
(1) Increase in communicable diseases tests reflects increased testing for influenza (pandemic and seasonal) as well as increased testing for H.pylori (bacteria that can cause digestive illness) and other communicable diseases by Yukon health care practitioners. Estimated decrease for 2010-11 from 2009-10 Forecast is related to projected decrease in pandemic influenza testing.

(2) Reproductive Health testing refers to pregnancy testing and pap smears.

(3) Tuberculosis (TB) tests reflect laboratory and medical imaging (x-ray) tests only. Mantoux (skin) tests are not included.

(4) Outreach refers to nursing services provided at community locations (e.g., Blood Ties Four Directions, Whitehorse Correctional Centre, Detox).

Activity Allocation by Disease Type for 2008-09



HEALTH AND SOCIAL SERVICES

YUKON HOSPITAL SERVICES

PROGRAM OBJECTIVE

- To support the Yukon Hospital Corporation in the pursuit of its legislated objectives as well as those specifically agreed upon between the Minister of Health and Social Services and the Yukon Hospital Corporation, consistent with the *Hospital Act*.

O&M EXPENDITURES (\$000s)	2010-11 ESTIMATE	Comparable		
		2009-10 FORECAST	2009-10 ESTIMATE	2008-09 ACTUAL
Activity				
Yukon Hospital Corporation	42,550	40,909	37,584	37,955
Total Yukon Hospital Services	42,550	40,909	37,584	37,955
Allotments				
Personnel	0	0	0	0
Other	0	0	0	0
Transfer Payments	42,550	40,909	37,584	37,955
Total Allotments	42,550	40,909	37,584	37,955

HEALTH AND SOCIAL SERVICES

REGIONAL SERVICES

PROGRAM OBJECTIVE

- To provide and coordinate services that strengthen the social well-being of individuals, families and communities in rural Yukon.

O&M EXPENDITURES (\$000s)	2010-11 ESTIMATE	Comparable		
		2009-10 FORECAST	2009-10 ESTIMATE	2008-09 ACTUAL
Activities				
Program Management	2,441	2,516	2,542	2,733
Family and Children's Services	996	996	996	1,052
Social Services	1,200	1,411	1,179	1,038
Total Regional Services	4,637	4,923	4,717	4,823
Allotments				
Personnel	2,102	2,177	2,203	2,167
Other	1,128	1,128	1,128	1,403
Transfer Payments	1,407	1,618	1,386	1,253
Total Allotments	4,637	4,923	4,717	4,823

HEALTH AND SOCIAL SERVICES

REVENUES (\$000s)	2010-11 ESTIMATE	Comparable		
		2009-10 FORECAST	2009-10 ESTIMATE	2008-09 ACTUAL
TRANSFERS FROM CANADA				
Prior Years' Transfers from Canada	0	7,933	7,933	7,933
Total Transfers from Canada	0	7,933	7,933	7,933
TAXES AND GENERAL REVENUES				
Health Services				
Registration and Fees	34	34	34	39
Environmental Health - Inspection/Permits	8	8	8	21
Total Taxes and General Revenues	42	42	42	60
THIRD-PARTY RECOVERIES				
Family and Children's Services				
Client Recovery	4	4	4	3
Social Services				
Client Recovery	50	50	50	34
Continuing Care				
Continuing Care Facilities	1,064	1,064	1,064	752
Health Services				
Third-Party Health Care Costs	4,109	4,109	4,109	3,556
Hearing Assessments and Aids	255	255	255	350
Community Nursing				
- Patient Services	487	487	487	628
- Drugs and Vaccines	82	82	82	86
- Rent/Utility Recoveries	112	112	112	100
- Other Recoveries	4	4	4	2
Prior Years' Recoveries	0	275	358	322
Total Third-Party Recoveries	6,167	6,442	6,525	5,833

HEALTH AND SOCIAL SERVICES

REVENUES (\$000s)	2010-11 ESTIMATE	Comparable		
		2009-10 FORECAST	2009-10 ESTIMATE	2008-09 ACTUAL
RECOVERIES FROM CANADA				
Corporate Services				
Prior Years' Recoveries	0	50	0	64
Family and Children's Services				
Child Welfare - DIAND	7,557	8,525	7,557	9,261
Federal Child Benefit	593	593	553	617
Transition Homes - DIAND	296	296	296	438
Youth Criminal Justice	1,302	1,402	1,302	1,303
National Crime Prevention Strategy - SNAP (Stop Now and Plan) Girls Connection Project	332	0	0	0
Social Services				
Social Services - DIAND	412	412	412	440
Yukon Child Benefit - DIAND	1,338	1,338	1,338	1,338
Alcohol and Drug Services - Detox and Treatment Practices Standardization	447	280	0	0
Prior Years' Recoveries	0	60	0	0
Continuing Care				
Continuing Care Facilities - DIAND	2,918	2,918	2,819	2,553
Home Care - DIAND	125	125	100	123
Health Services				
Chronic Conditions Surveillance	200	200	200	200
Travel Recoveries - First Nations Benefits	926	972	926	1,471
Hearing Assessments and Aids	25	25	25	67
Tobacco Quit Line	100	100	0	0
Community Nursing - Lower Post Recovery	15	15	15	16
Prior Years' Recoveries	0	1,120	936	750
Total Recoveries from Canada	16,586	18,431	16,479	18,641
Amortization of Deferred Capital Contributions	797	651	1,679	816
TOTAL REVENUES	23,592	33,499	32,658	33,283

HEALTH AND SOCIAL SERVICES

TRANSFER PAYMENTS (\$000s)	2010-11 ESTIMATE	Comparable		
		2009-10 FORECAST	2009-10 ESTIMATE	2008-09 ACTUAL
LEGISLATED GRANTS				
Family and Children's Services				
Adoption Subsidies	121	121	121	172
Child Care Subsidies	3,180	2,020	2,800	2,273
Social Services				
Social Assistance - Whitehorse	10,170	12,076	9,990	9,286
Yukon Seniors' Income Supplement	855	849	840	359
Pioneer Utility Grant	1,452	1,452	1,426	1,268
Continuing Care				
In-Lieu of Property Taxes	240	240	240	222
Health Services				
Medical Travel Subsidies	993	993	993	1,185
In-Lieu of Property Taxes - Community Nursing	97	97	97	96
Regional Services				
Social Assistance - Region	1,184	1,395	1,163	1,037
Total Legislated Grants	18,292	19,243	17,670	15,898

HEALTH AND SOCIAL SERVICES

TRANSFER PAYMENTS (\$000s)	2010-11 ESTIMATE	Comparable		
		2009-10 FORECAST	2009-10 ESTIMATE	2008-09 ACTUAL
OTHER TRANSFER PAYMENTS				
Corporate Services				
Vuntut Gwitchin First Nation Youth Program	67	67	67	67
United Way	12	12	12	12
Kids' Recreation Fund	200	200	200	188
Healthy Children	30	30	30	8
Food for Learning	97	97	97	92
Rick Hansen Foundation	20	20	20	20
Miscellaneous Transfers	20	20	20	0
Prior Years' Other Transfer Payments	0	104	0	122
Family and Children's Services				
Kwanlin Dün First Nation Child Welfare	64	64	64	65
Community Development Projects	10	10	10	(3)
Federal Child Benefit - Whitehorse	289	289	289	233
Foster Parent Association	15	15	15	15
Child Care Operating Funds	4,509	4,509	4,509	4,026
Youth Allowance	2	2	2	2
Parents of Children with Disabilities	341	341	341	184
Help and Hope for Families Society	434	419	319	320
Yukon Women's Transition Home Society	1,026	993	838	965
Teen Parent Access to Education Society	18	18	18	18
Child Development Centre	1,768	1,708	1,708	1,765
Skookum Jim Friendship Center	279	279	46	222
Dawson Shelter Society	215	215	215	215
Autism Yukon	305	305	305	0
Ta'an Kwach'an Council	75	75	0	0
Social Services				
Whitehorse Transit - Handy Bus	184	184	184	184
Alcohol and Drug -				
Education and Prevention	10	10	10	10
Employment Incentives	390	390	390	159
Rehabilitation Subsidies	15	15	15	5
Salvation Army	218	218	68	218

HEALTH AND SOCIAL SERVICES

TRANSFER PAYMENTS (\$000s)	2010-11 ESTIMATE	Comparable		
		2009-10 FORECAST	2009-10 ESTIMATE	2008-09 ACTUAL
OTHER TRANSFER PAYMENTS (cont'd)				
Social Services (cont'd)				
Yukon Council on Aging	41	41	41	41
Yukon Association of Community Living	88	88	60	65
Learning Disabilities Association of Yukon	131	131	122	130
Line of Life Association of Yukon	74	74	36	36
Fetal Alcohol Syndrome Society of Yukon	254	454	162	269
Yukon Anti-Poverty Coalition	15	15	15	0
Haines Junction Employment Development Society	100	100	100	50
Challenge				
- Community Vocational Alternatives	597	597	503	503
Home Support for Individuals with Disabilities	135	135	135	84
Options for Independence Society	226	226	226	0
Teegatha 'Oh Zheh	1,093	1,093	756	864
Yukon Council on Disability	25	25	25	25
Catholic Social Services - Alberta	145	145	145	158
Canadian National Institute for the Blind	33	33	33	0
Prior Years' Other Transfer Payments	0	0	0	50
Continuing Care				
Signpost Seniors' Society	50	50	50	46
St. Elias Seniors' Society	30	30	30	25
Hospice Yukon Society	194	194	194	234
Health Services				
First Nations Health Partnership	120	120	120	72
Yukon Medical Association				
- Medical Practice Insurance	262	262	262	262
- Education	238	238	238	250
- Physician Recruitment/Retention Initiatives	2,496	2,712	2,712	965
Yukon Hospital Insurance Services	16,300	16,300	16,300	17,792
Health Investment Fund	50	50	50	50

HEALTH AND SOCIAL SERVICES

TRANSFER PAYMENTS (\$000s)	2010-11 ESTIMATE	Comparable		
		2009-10 FORECAST	2009-10 ESTIMATE	2008-09 ACTUAL
OTHER TRANSFER PAYMENTS (cont'd)				
Health Services (cont'd)				
Victoria Faulkner Women's Centre				
- Accommodation	30	30	30	30
Yukon Registered Nurses Association				
- Nursing Education Fund	65	65	65	55
- Nursing Advisory Committee	10	10	10	10
- Nurses Post Basic Specialty Education Fund	75	75	75	75
Many Rivers Counselling and Support Services				
- Youth Outreach	161	161	161	0
- Outreach Van	153	153	153	411
- Counselling Services	1,437	1,387	1,387	1,241
Second Opinion Society	98	98	98	98
Blood Ties Four Directions Centre Society	174	174	174	185
Liard Basin Task Force Society	80	80	80	79
Salvation Army	150	150	150	148
Community Health - Tobacco Quit Line	6	15	0	0
Yukon Hospital Corporation				
- Laboratory Services	320	320	320	92
Lutherwood Mental Health	155	155	155	150
Yukon College - Tracks Newsletter	9	9	0	0
British Columbia Centre for Disease Control	101	101	66	0
Prior Years' Other Transfer Payments	0	6,605	4,054	4,230
Yukon Hospital Services				
Yukon Hospital Corporation				
- Operational Funding	39,917	37,557	34,504	34,697
- First Nations Health	663	682	663	663
- Yukon Hospital Foundation	75	75	75	75
- Pension Fund	977	1,809	1,556	2,337
- Patient Wait Times Guarantee Trust	918	786	786	183

HEALTH AND SOCIAL SERVICES

TRANSFER PAYMENTS (\$000s)	2010-11 ESTIMATE	Comparable		
		2009-10 FORECAST	2009-10 ESTIMATE	2008-09 ACTUAL
OTHER TRANSFER PAYMENTS (cont'd)				
Regional Services				
Liard Family Support	43	43	43	43
Ross River Dena Family Support	44	44	44	43
Vuntut Gwitchin First Nation	65	65	65	65
Federal Child Benefit - Region	71	71	71	65
Total Other Transfer Payments	79,107	84,442	76,892	76,058
TOTAL TRANSFER PAYMENTS	97,399	103,685	94,562	91,956