

WOMEN'S DIRECTORATE

VOTE 11
WOMEN'S DIRECTORATE

MINISTER

Hon. E. Taylor

DIRECTOR

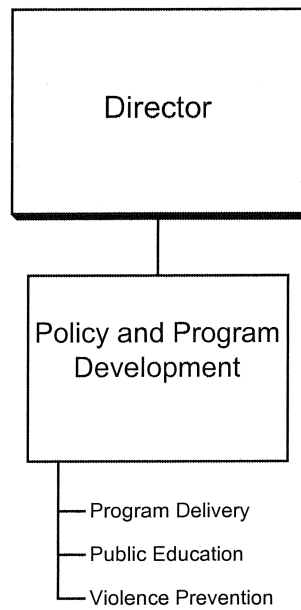
J. England

DEPARTMENTAL OBJECTIVE

- To support the Government of Yukon's commitment to the economic, legal and social equality of women.

WOMEN'S DIRECTORATE

RELATIONSHIP BETWEEN ORGANIZATION AND PROGRAMS



VOTE 11
WOMEN'S DIRECTORATE

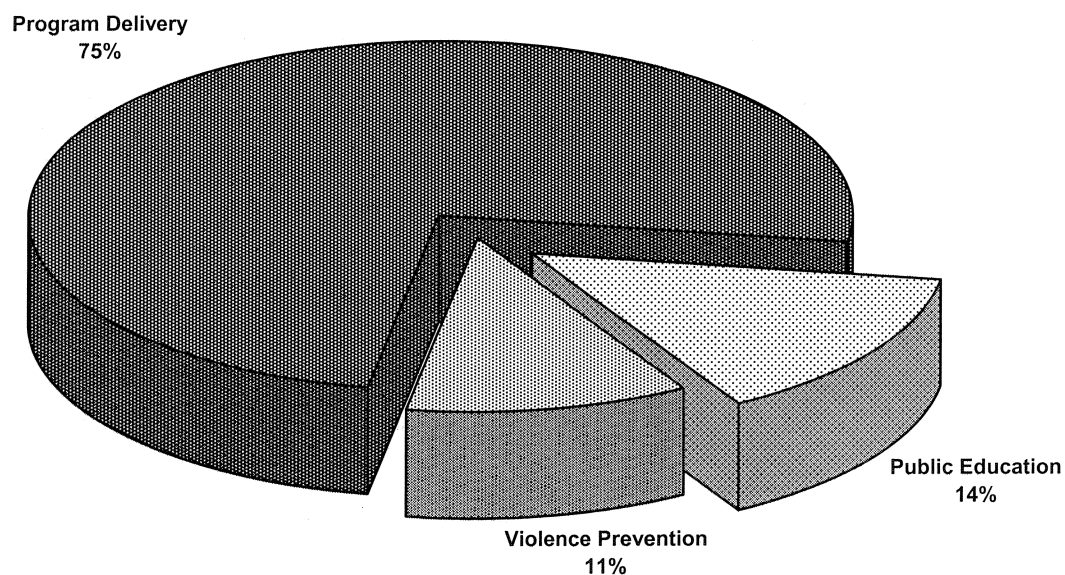
FINANCIAL SUMMARY (\$000s)	2008-09 ESTIMATE	2007-08 FORECAST	% CHANGE	2006-07 ACTUAL
Operation and Maintenance Expenditures				
Policy and Program Development	1,125	1,232	-9%	1,015
Total Operation and Maintenance Vote 11	1,125	1,232	-9%	1,015
Amortization Expense	2	2	0%	0
Revenues	0	0	0%	0
Allotments				
Personnel	517	495	4%	511
Other	236	365	-35%	172
Transfer Payments	372	372	0%	332
Total Allotments	1,125	1,232	-9%	1,015

Note:

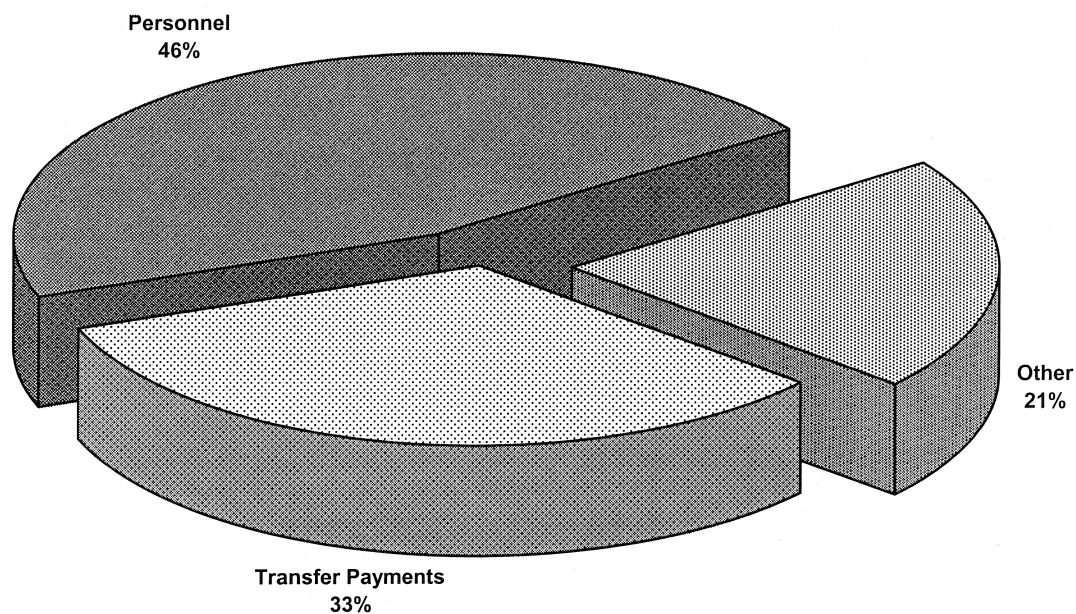
Restated 2006-07 Actual and 2007-08 Forecast to be consistent with the 2008-09 Estimate presentation.

VOTE 11
WOMEN'S DIRECTORATE

2008-09 Estimate
Distribution of O&M Expenditures by Activity



2008-09 Estimate
Distribution of O&M Expenditures by Allotment



WOMEN'S DIRECTORATE

POLICY AND PROGRAM DEVELOPMENT

PROGRAM OBJECTIVES

- To consult and collaborate with Yukon women to incorporate gender and diversity perspectives into government decision-making.
- To provide leadership to all departments in analyzing and evaluating policies, programs, and legislation to ensure gender equitable outcomes.
- To build the capacity of departments involved in policy and program development to ensure they have the skills and information needed to do gender inclusive analysis.
- To provide effective public education on women's equality, health and violence prevention issues to ensure healthy families and safer communities.
- To provide research and policy resources on economic security, health, legal and social equality, and violence against women for the government and the public.

O&M EXPENDITURES (\$000s)	2008-09 ESTIMATE	2007-08 FORECAST	% CHANGE	2006-07 ACTUAL
Activities				
Program Delivery	842	833	1%	778
Public Education	157	124	27%	59
Violence Prevention	126	275	-54%	178
Total Policy and Program Development	1,125	1,232	-9%	1,015
Allotments				
Personnel	517	495	4%	511
Other	236	365	-35%	172
Transfer Payments	372	372	0%	332
Total Allotments	1,125	1,232	-9%	1,015

WOMEN'S DIRECTORATE

TRANSFER PAYMENTS (\$000s)	2008-09 ESTIMATE	2007-08 FORECAST	% CHANGE	2006-07 ACTUAL
OTHER TRANSFER PAYMENTS				
Policy and Program Development				
Victoria Faulkner Women's Centre				
- Operations	20	20	0%	20
- Women's Advocate	60	60	0%	60
Yukon Status of Women Council	12	12	0%	12
Various Women's Groups	175	175	0%	132
Family Violence and Violence Against Women Prevention Initiatives	100	100	0%	94
Women's Community Projects	5	0	100%	0
Prior Years' Other Transfer Payments	0	5	-100%	14
TOTAL TRANSFER PAYMENTS	372	372	0%	332