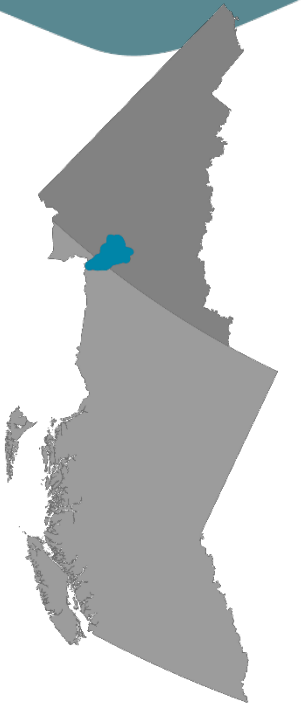




# Carcross Caribou 2024 Fall Composition Survey



(Carcross caribou herd  
range highlighted in blue)

Fall composition surveys are one of the primary monitoring tools for caribou management in the Yukon and BC. From these surveys we get an index of calf recruitment (calves per 100 cows) and sex ratios (bulls per 100 cows), which are indicators of population trend when monitored over time. Except for 2022, these surveys have been conducted on the herd annually since 1992.

## Summary of 2024 results

**Date:** 8-11 October 2024

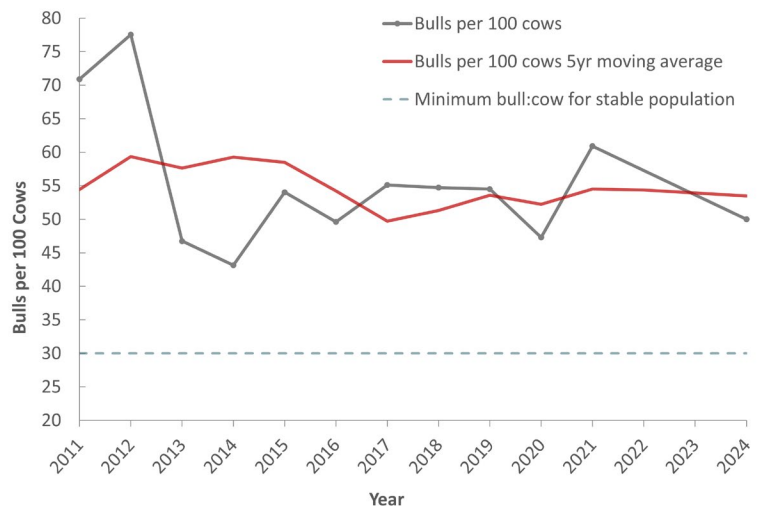
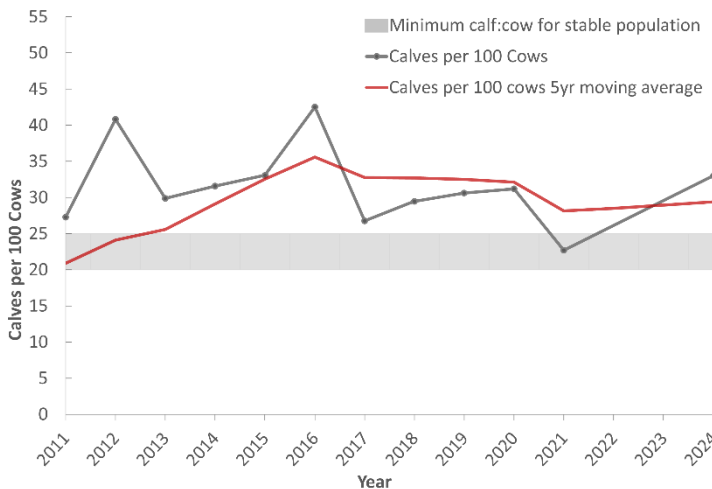
**Survey hours flown:** 20

**No. of caribou observed:** 448

**Calf:Cow ratio:** 33 **Bull:Cow ratio:** 50

### Population trend: Stable (2019)

In 2019, anecdotal observations, along with composition and population surveys, suggested the herd was stable. In 2023, we did not observe enough caribou to accurately assess population trends; however, 2024 results and long-term trends in calf recruitment indicate that the herd remains stable.

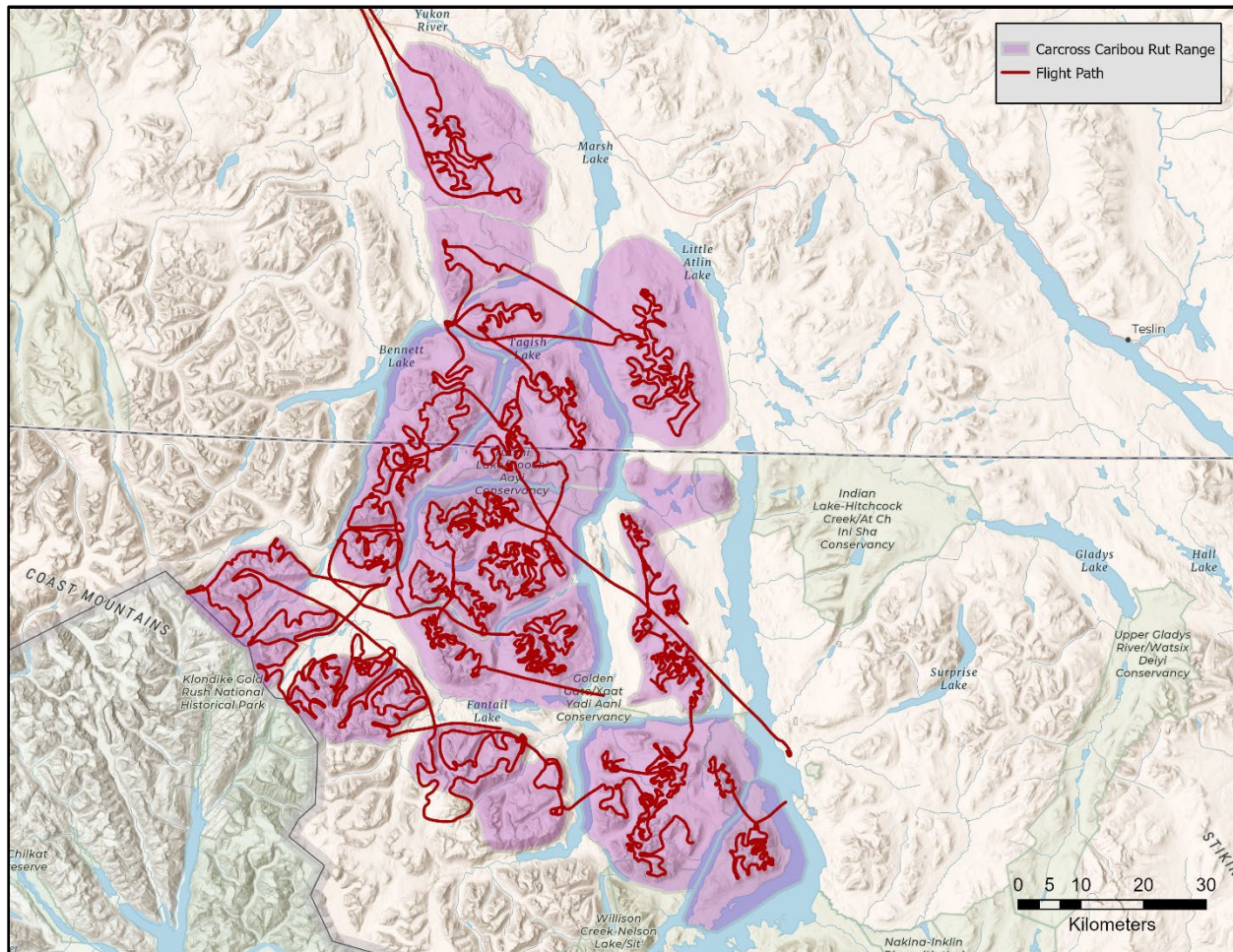


**Management:** The Southern Lakes Caribou Recovery Program began in 1993 as a cooperative effort to recover the Carcross, Ibex, Laberge and Atlin caribou herds from historic declines. The Southern Lakes Caribou Steering Committee recently completed and signed a Relationship Plan for Southern Lakes Caribou. For more information about the Carcross herd and read the Relationship Plan, visit [yukon.ca/en/woodland-caribou](http://yukon.ca/en/woodland-caribou) or [www.southernlakescaribou.com](http://www.southernlakescaribou.com).

### FOR MORE INFORMATION, PLEASE CONTACT:

Kelsey Russell, Caribou Biologist, [Kelsey.Russell@yukon.ca](mailto:Kelsey.Russell@yukon.ca)

Conrad Thiessen, Senior Wildlife Biologist, [Conrad.Thiessen@gov.bc.ca](mailto:Conrad.Thiessen@gov.bc.ca)



**Map 1.** Flight paths from the Oct 8, 10, and 11<sup>th</sup>, 2024 Carcross caribou composition survey in the Yukon and British Columbia.

### Acknowledgements

We extend our thanks to observers from Carcross/Tagish First Nation and the Taku River Tlingit First Nation for their valuable assistance during the survey. We also extend our appreciation to Tressa Clarke and Matt O'Brien from Discovery Helicopters for their excellent flying.

### FOR MORE INFORMATION, PLEASE CONTACT:

Kelsey Russell, Caribou Biologist, [Kelsey.Russell@yukon.ca](mailto:Kelsey.Russell@yukon.ca)

Conrad Thiessen, Senior Wildlife Biologist, [Conrad.Thiessen@gov.bc.ca](mailto:Conrad.Thiessen@gov.bc.ca)