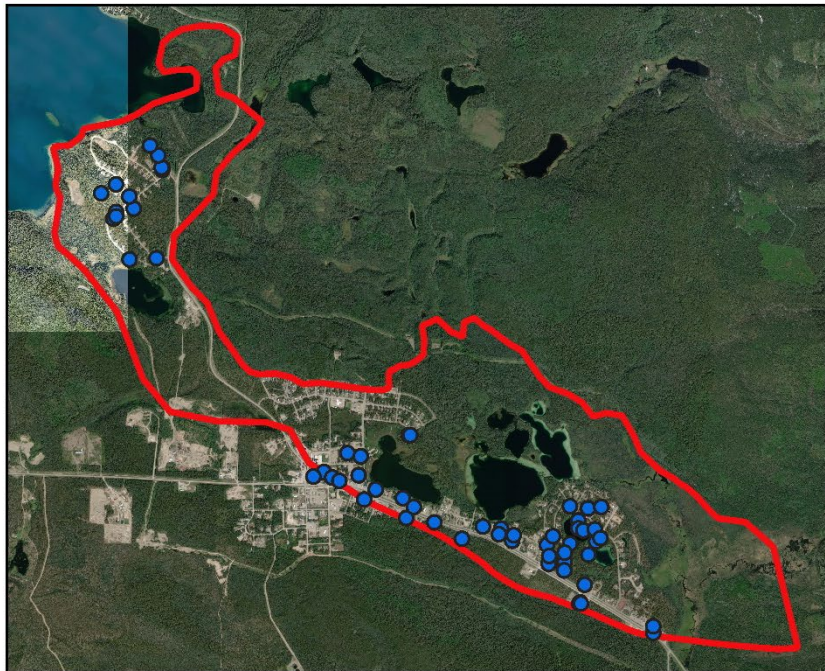


Watson Lake Glaciofluvial Aquifer



Legend
 ● GROUNDWATER WELLS
 ■ AQUIFER BOUNDARY

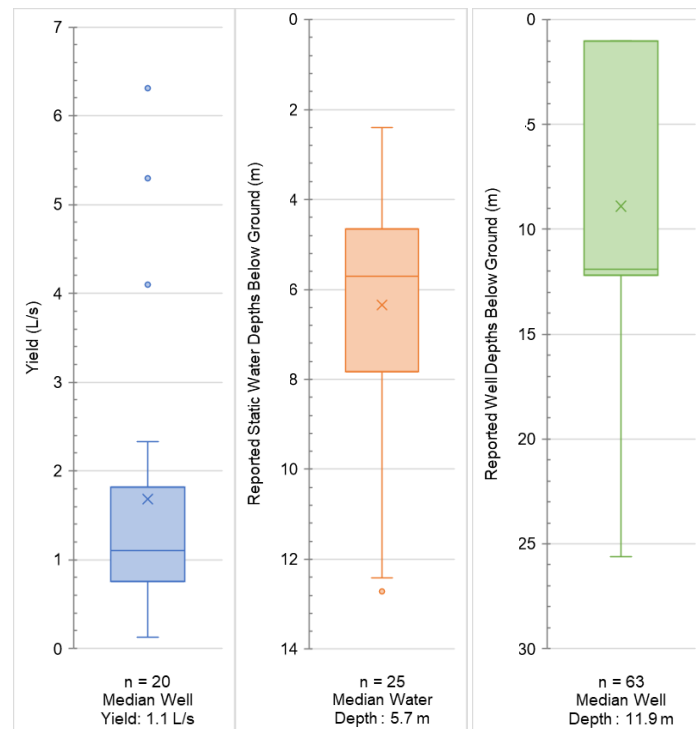
0 0.75 1.5 km



Aquifer description (mapping report 2022)

Unconfined sand and gravel aquifer located close to surface throughout the bedrock valley around Watson Lake that is associated with glaciofluvial outwash deposits. The aquifer extent is generally constrained to the distribution of the mapped surficial glaciofluvial deposits in the valley.

Aquifer details	
Municipality	Watson Lake
Water Management Area	Liard River (https://legislation.yukon.ca/regs/oic2003_058.pdf)
No. wells correlated to aquifer	63
Vulnerability to contamination	High
Productivity	Moderate/High
Aquifer classification	IIIA
Aquifer sub-type	4a
Hydraulic connectivity	Likely
Water Licences issued for water wells completed in this aquifer	None
Observation wells (Active, Inactive)	YOWN-2209S



For more information, please contact the Water Resources Branch,
 Government of Yukon at water.resources@yukon.ca.

