

# **COMMUNITY SERVICES**

**VOTE 51**

**DEPARTMENT OF COMMUNITY SERVICES**

**MINISTER**

**Hon. A. Lang**

**DEPUTY MINISTER**

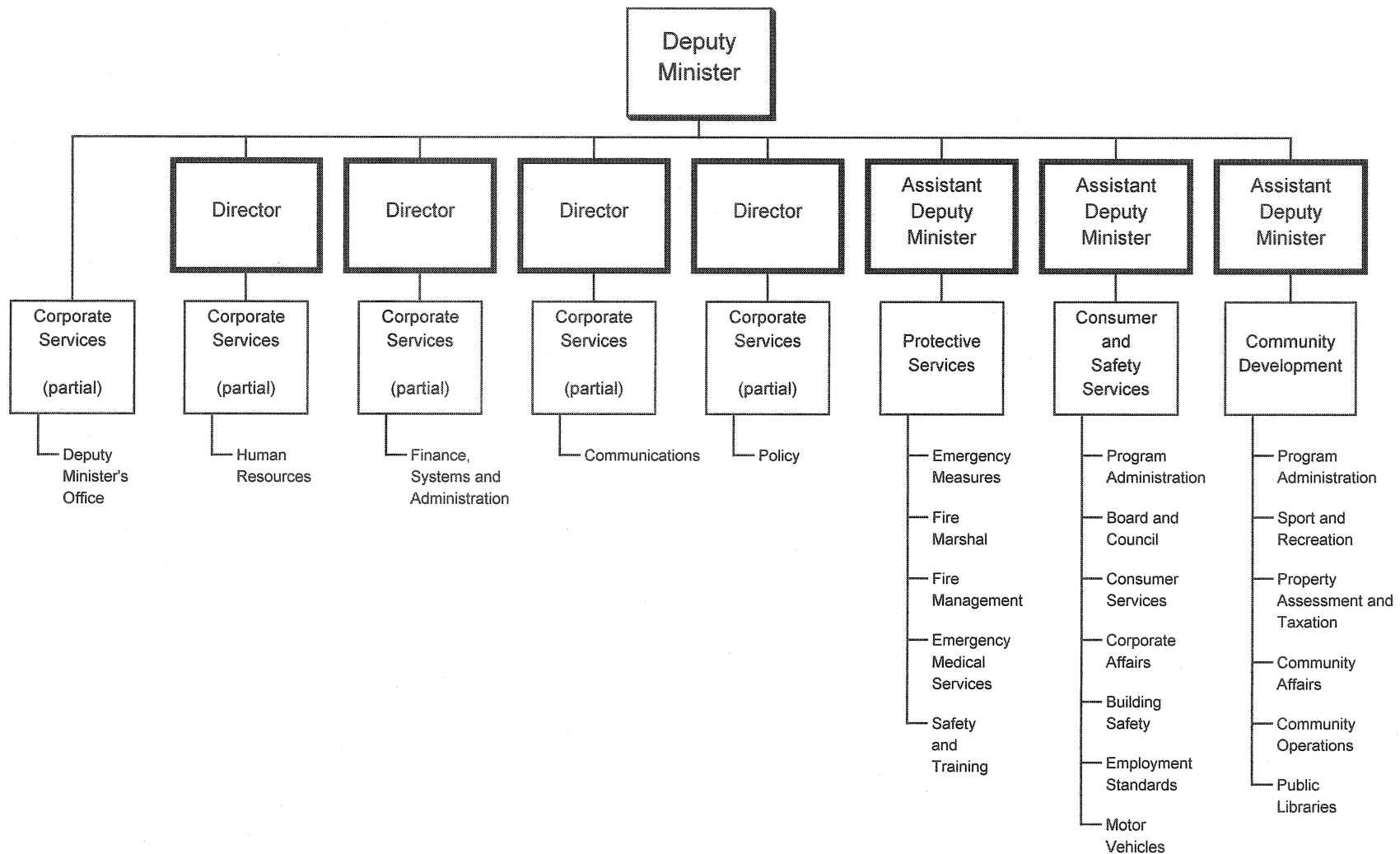
**J. O'Farrell**

**DEPARTMENTAL OBJECTIVES**

- To promote sustainable healthy communities by supporting local governments, community organizations, and the volunteer sector; encouraging active living through sport and recreation; and directly providing community services, property assessment and taxation, infrastructure and land development.
- To protect public safety through driver and vehicle programs; to provide community educational opportunities through public library programs; and to provide bilingual inquiry services to the public and Yukon government departments.
- To support the health, safety and protection of the public through programs such as the application of minimum building, electrical and mechanical codes; equitable and responsible employment practices; and orderly and accountable professional and commercial activity.
- To protect broad consumer interests through the provision of education, information and enforcement services.
- To assist and enable communities and people to protect themselves from the threat of wildland fire, structural fire and other emergencies or disasters and provision of emergency medical services.

# DEPARTMENT OF COMMUNITY SERVICES

## RELATIONSHIP BETWEEN ORGANIZATION AND PROGRAMS



Note: Dark outlined boxes represent positions reporting directly to the Deputy Minister. Other boxes represent programs. Activities are listed below the programs. Programs identified as "partial" represent responsibility for the program being shared by two or more positions reporting directly to the Deputy Minister.

**VOTE 51**  
**DEPARTMENT OF COMMUNITY SERVICES**

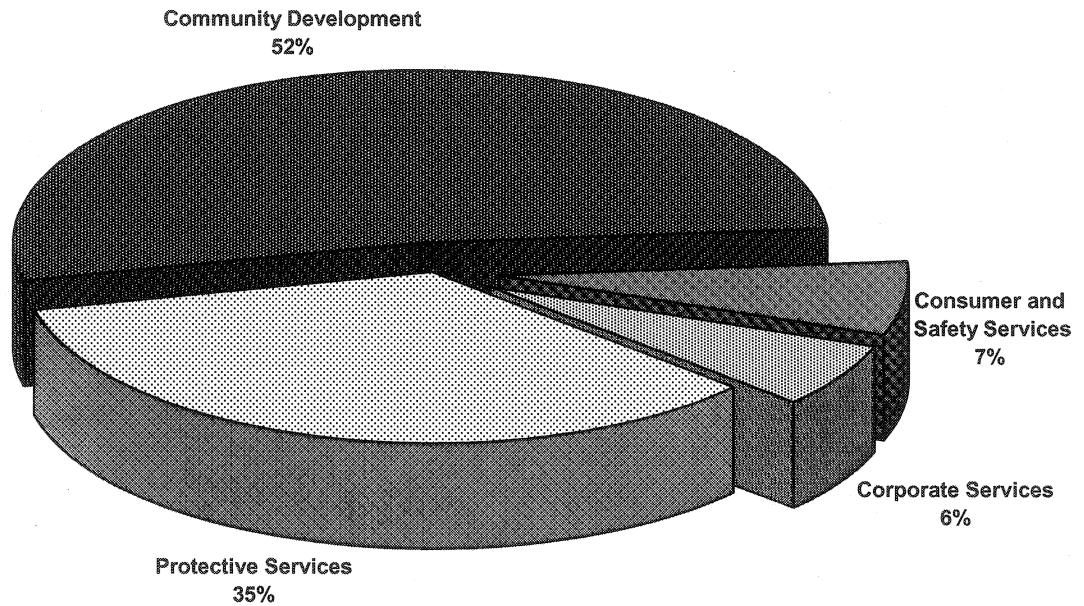
FINANCIAL SUMMARY (\$000s)	2011-12 ESTIMATE	Comparable		
		2010-11 FORECAST	2010-11 ESTIMATE	2009-10 ACTUAL
Operation and Maintenance Expenditures				
Corporate Services	4,093	4,119	3,939	3,642
Protective Services	23,613	23,814	22,713	24,510
Community Development	35,513	35,574	34,910	33,869
Consumer and Safety Services	4,757	4,701	4,593	4,396
Total Operation and Maintenance Vote 51	67,976	68,208	66,155	66,417
Amortization Expense				
	1,866	1,895	1,761	1,695
Revenues				
Taxes and General Revenues	10,368	10,416	9,968	12,311
Third-Party Recoveries	1,802	1,781	1,754	1,319
Recoveries from Canada	198	(99)	198	364
Amortization of Deferred Capital Contributions	294	286	235	236
Total Revenues	12,662	12,384	12,155	14,230
Allotments				
Personnel	24,320	24,318	22,956	23,279
Other	14,872	15,054	14,764	14,742
Transfer Payments	28,784	28,836	28,435	28,396
Total Allotments	67,976	68,208	66,155	66,417

**Note:**

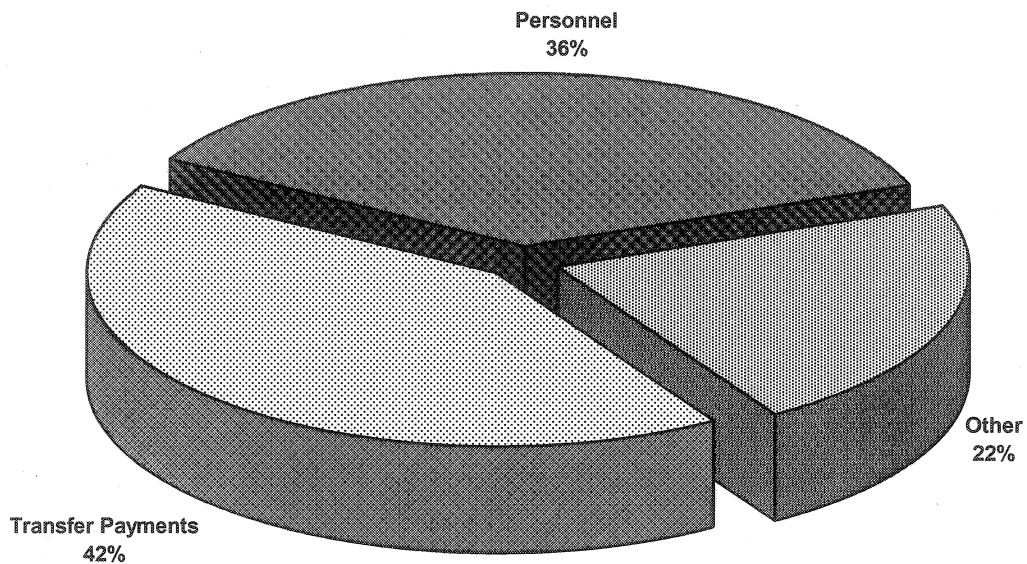
Restated 2010-11 Forecast, 2010-11 Estimate and 2009-10 Actual to be consistent with the 2011-12 Estimate presentation.

**VOTE 51**  
**DEPARTMENT OF COMMUNITY SERVICES**

**2011-12 Estimate**  
**Distribution of O&M Expenditures by Program**



**2011-12 Estimate**  
**Distribution of O&M Expenditures by Allotment**



## COMMUNITY SERVICES

## CORPORATE SERVICES

### PROGRAM OBJECTIVES

- To provide Community Services managers with direction, guidance and support services in the management and operation of human resource, financial and information systems and related administrative processes to ensure that resources are utilized effectively and efficiently in a coordinated manner.
- To provide legislative, policy, program development and communication support; to undertake corporate strategic and project specific planning; and to carry out program reviews and evaluations.

O&M EXPENDITURES (\$000s)	2011-12 ESTIMATE	Comparable		
		2010-11 FORECAST	2010-11 ESTIMATE	2009-10 ACTUAL
<b>Activities</b>				
Deputy Minister's Office	443	459	405	420
Human Resources	782	740	722	762
Finance, Systems and Administration	1,785	1,695	1,693	1,576
Policy	684	835	761	618
Communications	399	390	358	266
<b>Total Corporate Services</b>	<b>4,093</b>	<b>4,119</b>	<b>3,939</b>	<b>3,642</b>
<b>Allotments</b>				
Personnel	3,655	3,651	3,526	3,347
Other	438	468	413	295
Transfer Payments	0	0	0	0
<b>Total Allotments</b>	<b>4,093</b>	<b>4,119</b>	<b>3,939</b>	<b>3,642</b>

## COMMUNITY SERVICES

## PROTECTIVE SERVICES

### PROGRAM OBJECTIVES

- To promote and foster emergency preparedness through the provision of guidance, coordination and support for the safety of people, mitigation of risk, protection of property, provision of public information, and the continuity of government in the event of disaster or major emergencies in conjunction with other levels of government, community emergency coordinators and volunteer organizations.
- To support health, safety and public protection through the administration and enforcement of the fire prevention and protection program along with other safety related programs like fuel storage and vehicle extrication response.
- To protect communities, families, individuals, property, and other natural, historic, cultural and community values from the harmful effects of wildland fire through the Wildfire Management program and policies and the FireSmart program.
- To support communities and volunteers providing emergency medical, ambulance and medevac services throughout the Yukon.

O&M EXPENDITURES (\$000s)	2011-12 ESTIMATE	Comparable		
		2010-11 FORECAST	2010-11 ESTIMATE	2009-10 ACTUAL
<b>Activities</b>				
Emergency Measures	529	441	434	762
Fire Marshal	879	870	861	820
Fire Management	14,485	14,309	14,165	15,271
Emergency Medical Services	7,358	7,845	6,913	7,477
Safety and Training	362	349	340	180
<b>Total Protective Services</b>	<b>23,613</b>	<b>23,814</b>	<b>22,713</b>	<b>24,510</b>
<b>Allotments</b>				
Personnel	12,225	12,405	11,430	11,945
Other	10,423	10,318	10,318	11,107
Transfer Payments	965	1,091	965	1,458
<b>Total Allotments</b>	<b>23,613</b>	<b>23,814</b>	<b>22,713</b>	<b>24,510</b>

## COMMUNITY SERVICES

## PROTECTIVE SERVICES Fire Marshal

### STATISTICS

	2011 ESTIMATE	<i>Comparable</i>		
		2010 ACTUAL	2010 ESTIMATE	2009 ACTUAL
Fire Responses (#) *	800	765	650	765
Life Safety Inspections (#) *	70	55	30	38
Storage Tank Inspections (#)	75	75	75	72

\* Statistics reported on a calendar year basis.



## COMMUNITY SERVICES

## PROTECTIVE SERVICES Emergency Medical Services Ambulance Services

### STATISTICS

- Yukon Ambulance Services provides emergency transportation for residents and non-residents throughout the Territory. In Whitehorse, the Ambulance Station is staffed 24 hours a day. In rural communities, the service is provided by on-call volunteers with two full time Primary Care Paramedics in Dawson City and Watson Lake. The community provides the volunteers and Yukon government provides the ambulance, equipment and training.

	2011	<i>Comparable</i>		
	ESTIMATE	2010 FORECAST	2010 ESTIMATE	2009 ACTUAL
<b>Whitehorse</b>				
Transfers	950	910	850	789
Medical Emergencies	4,500	4,411	4,300	3,821
Other	1,210	1,190	510	423
Total Ambulance Calls	6,660	6,511	5,660	5,033
<b>Rural Communities</b>				
Total Ambulance Calls	1,300	1,243	1,640	1,501
<b>Transfer by Medevac Team *</b>				
In Territory	420	409	395	371
Out-of-Territory	330	316	285	272
Total Medevacs	750	725	680	643

- \* Transfer by Medevac Team is the number of vehicle or aircraft movements.  
Statistics are reported on a calendar year basis.

## COMMUNITY SERVICES

## COMMUNITY DEVELOPMENT

### PROGRAM OBJECTIVES

- To encourage, strengthen, enable, and support local government in the Yukon.
- To establish and nurture partnerships with Yukon people, community organizations and the volunteer sector.
- To provide all Yukon taxing authorities with current, accurate and equitable property assessments, and establish general property tax rates for all areas outside municipalities.
- To promote health and safety in unincorporated communities throughout the Yukon by operating and maintaining community infrastructure such as landfills, water and sewer; and providing advice and project assistance to municipalities and Yukon First Nations upon request.
- To encourage and support active living and healthy lifestyles in communities through the promotion and development of recreation and sport.
- To provide bilingual inquiry services to the public and Yukon government departments.
- To support the growth and development of Yukon people, associations and communities by providing community education, information, culture and recreation opportunities and resources through public libraries.

O&M EXPENDITURES (\$000s)	2011-12 ESTIMATE	Comparable		
		2010-11 FORECAST	2010-11 ESTIMATE	2009-10 ACTUAL
<b>Activities</b>				
Program Administration	558	524	511	543
Sport and Recreation	3,385	4,293	4,201	4,560
Property Assessment and Taxation	4,101	4,066	4,042	3,980
Community Affairs	22,139	21,581	21,207	20,231
Public Libraries	1,939	1,845	1,810	1,724
Community Operations	3,391	3,265	3,139	2,831
<b>Total Community Development</b>	<b>35,513</b>	<b>35,574</b>	<b>34,910</b>	<b>33,869</b>
<b>Allotments</b>				
Personnel	4,422	4,300	4,146	4,179
Other	3,272	3,529	3,294	2,766
Transfer Payments	27,819	27,745	27,470	26,924
<b>Total Allotments</b>	<b>35,513</b>	<b>35,574</b>	<b>34,910</b>	<b>33,869</b>

## COMMUNITY SERVICES

## COMMUNITY DEVELOPMENT Sport and Recreation

### STATISTICS

- Contributions to Summer Pool, Recreation Facility Operations, Programs, and Recreation Directors.

		Comparable		
	2011-12 ESTIMATE	2010-11 FORECAST	2010-11 ESTIMATE	2009-10 ACTUAL
Local Authorities (\$)				
Beaver Creek	33,190	33,190	33,200	33,190
Burwash Landing	7,409	7,409	7,400	0
Carcross	54,790	54,790	54,800	54,790
Destruction Bay	7,160	7,160	7,200	7,160
Keno City	3,200	3,200	3,200	3,200
Marsh Lake	39,600	39,600	39,600	39,600
Mount Lorne	39,390	39,390	39,400	39,390
Old Crow	46,190	46,190	46,200	46,190
Pelly Crossing	51,480	51,480	51,500	51,480
Ross River	81,570	81,570	81,600	81,570
Tagish	35,260	35,260	35,300	35,260
Upper Liard	18,690	18,690	18,700	0
	417,929	417,929	418,100	391,830

## COMMUNITY SERVICES

## COMMUNITY DEVELOPMENT Sport and Recreation

### STATISTICS

	2011-12 ESTIMATE	Comparable		
		2010-11 FORECAST	2010-11 ESTIMATE	2009-10 ACTUAL
<b>Sport Governing Bodies</b>				
Yukon Sport Governing Bodies (YSGBs)				
Funded (#)	28	27	27	27
YSGB Affiliated Clubs Across Yukon (#)	90	82	105	102
YSGB Members (#)	10,900	10,881	10,500	10,318
Elite Athletes Funded (#)	28	27	25	25
Athletes Placed in Top Three International or National Competitions (#)	28	27	25	25
Active Coaches and Officials (#)	1,325	1,268	1,350	1,300
Dollars provided and claimed for administration, training, and competition. ( Yukon Lotteries Commission contributes funding toward this amount.) Includes Yukon Sport Governing Bodies, Sport Yukon, North American Indigenous Games, Arctic Winter Games, Canada Senior Games, Canada Winter Games, Western Canada Games, Elite Athletes and High Performance Coaches and Officials				
Total (\$)	1,815,000	2,730,000	2,655,000	3,073,362
<b>Special Recreation Groups</b>				
Yukon Special Recreation Groups Funded (#)	7	6	8	7
Members (#)	5,500	4,839	6,900	6,000
Dollars provided for administration, training and programs including: Special Olympics, Youth Special Recreation Groups, Active Living/Recreation and Parks Association of Yukon, Yukon Disabilities Association, and Elder Active Recreation Association.				
Total (\$)	668,000	668,000	668,000	668,285

## COMMUNITY SERVICES

## COMMUNITY DEVELOPMENT Property Assessment and Taxation

### STATISTICS

	2011-12 ESTIMATE	Comparable		
		2010-11 FORECAST	2010-11 ESTIMATE	2009-10 ACTUAL
<b>Assessments</b>				
Properties Assessed (#)	21,401	21,078	21,088	20,867
Total Assessed Value (\$000s)	3,590,909	3,415,900	3,417,586	3,230,942
Cost Per Property Assessment (\$)	25	25	25	25
Complaints (#)				
- Assessment Review Board	20	20	20	18
Appeals (#)				
- Assessment Appeal Board	5	5	5	9
<b>Taxation</b>				
Home Owner Grants Paid (#)	7,900	7,790	7,900	7,638
Average Home Owner Grant (\$)	401	407	401	411

## COMMUNITY SERVICES

## COMMUNITY DEVELOPMENT Community Affairs

### STATISTICS

	2011-12 ESTIMATE	Comparable		
		2010-11 FORECAST	2010-11 ESTIMATE	2009-10 ACTUAL
<b>Transfer Payments (\$)</b>				
Grant-in-Lieu of Property Taxes	5,454,000	5,454,000	5,254,000	5,137,601
Community/Local Advisory Council Operation and Maintenance Grants	70,000	70,000	70,000	61,219
Association of Yukon Communities	100,000	100,000	100,000	101,500
Comprehensive Municipal Grants	<u>15,770,000</u>	<u>14,962,000</u>	<u>14,962,000</u>	<u>14,153,010</u>
Total Transfer Payments	<u><u>21,394,000</u></u>	<u><u>20,586,000</u></u>	<u><u>20,386,000</u></u>	<u><u>19,453,330</u></u>

## COMMUNITY SERVICES

## COMMUNITY DEVELOPMENT Program Administration

### STATISTICS

	2011-12 ESTIMATE	Comparable		
		2010-11 FORECAST	2010-11 ESTIMATE	2009-10 ACTUAL
Inquiry Centre				
Telephone Calls Answered (including 1-800)	21,500	19,848	30,266	22,176
Counter Inquiries Responded	2,547	2,316	3,080	2,561
Written Requests Responded	440	400	715	387
Building Tours Provided (tours/people)	36/87	34/82	97/200	98/207
French Calls Responded	198	180	175	215

## COMMUNITY SERVICES

## COMMUNITY DEVELOPMENT Community Operations

### STATISTICS

	2011-12 ESTIMATE	Comparable		
		2010-11 FORECAST	2010-11 ESTIMATE	2009-10 ACTUAL
<b>Unincorporated Community Services</b>				
Street Lights (#)	255	250	246	245
Water Delivery Customers (#)				
Carcross	200	200	210	190
Keno City	30	25	25	25
Old Crow	120	120	111	115
Ross River	172	170	170	170
(Note: # of customers within +/- 10%)				
Sewage Eduction Services Customers (#)				
Old Crow	120	120	111	115
Sewer Systems Customers (#)				
Destruction Bay	12	12	12	12
Solid Waste Sites Operated (#)	18	18	18	20
Mosquito Control (#)				
Hectares Treated with Larvicide	700	700	700	700
Communities Participating in Larvicide Program	9	9	11	9



## COMMUNITY SERVICES

## COMMUNITY DEVELOPMENT Public Libraries

### STATISTICS

	2011-12	Comparable		
	ESTIMATE	2010-11 FORECAST	2010-11 ESTIMATE	2009-10 ACTUAL
<b>Library Collections (#)</b>				
Materials Processed *	10,000	10,000	9,500	8,776
Material Distributed to Libraries	15,000	15,000	20,000	16,452
* Figures include videos, books and audio visual material catalogued for Yukon Public Libraries.				
<b>Library Circulation (#)</b>				
Whitehorse Public Library	150,000	148,000	150,000	144,569
Communities	30,000	30,000	25,000	27,324
Library cards (new and renewed)	16,000	16,000	10,000	20,071
<b>Library Use (#)</b>				
Whitehorse Public Library Visits	240,000	235,000	210,000	204,691
Library Programs - Attendance Whitehorse	4,000	3,000	4,000	4,314
Library Programs - Attendance Communities	3,500	3,500	4,000	3,787
<b>Reference Questions (#)</b>				
Whitehorse Public Library	16,000	16,000	20,000	20,976
Communities	5,000	5,100	5,000	5,600
External to Yukon Inter-library Loan				
- Requests Filled	750	800	1,000	926
Internet Sessions Booked *				
- Whitehorse Public Library	32,000	32,000	33,000	31,764
- Communities	26,000	26,000	23,000	21,179

\* Internet use is a significant activity in Yukon Public Libraries, with public access available in all community libraries.

## COMMUNITY SERVICES

## CONSUMER AND SAFETY SERVICES

### PROGRAM OBJECTIVES

- To encourage and maintain equitable and responsible employment practices and to promote public interest in positive labour management relations through enforcement of minimum employment standards.
- To encourage and ensure orderly and responsible commercial activity through maintenance of enabling legislation, disclosure requirements and public information registries.
- To protect and enhance the public interest in professional and commercial services, and assist in consumer protection through education, provision of information and enforcement of legislation.
- To support, administer and enforce building, plumbing, electrical and mechanical standards in conjunction with reviewing development permits and maintaining a building information repository.
- To protect public safety through appropriate driver licensing and vehicle registration programs.
- To provide the public with an appeal process on motor vehicle licensing and regulatory decisions which balances public safety with individual rights and responsibilities.

O&M EXPENDITURES (\$000s)	2011-12 ESTIMATE	Comparable		
		2010-11 FORECAST	2010-11 ESTIMATE	2009-10 ACTUAL
<b>Activities</b>				
Program Administration	162	161	158	171
Board and Council	114	120	118	94
Consumer Services	755	762	742	730
Corporate Affairs	464	435	425	501
Motor Vehicles	1,416	1,400	1,370	1,228
Building Safety	1,335	1,323	1,292	1,196
Employment Standards	511	500	488	476
<b>Total Consumer and Safety Services</b>	<b>4,757</b>	<b>4,701</b>	<b>4,593</b>	<b>4,396</b>
<b>Allotments</b>				
Personnel	4,018	3,962	3,854	3,808
Other	739	739	739	574
Transfer Payments	0	0	0	14
<b>Total Allotments</b>	<b>4,757</b>	<b>4,701</b>	<b>4,593</b>	<b>4,396</b>

## COMMUNITY SERVICES

## CONSUMER AND SAFETY SERVICES

### Consumer Services

## STATISTICS

- To provide safeguards to consumers in acquiring goods and services, in order to contribute to the efficient functioning of the marketplace and to ensure that those licensed to provide services are adequately qualified.

	2011-12	Comparable		
	ESTIMATE	2010-11 FORECAST	2010-11 ESTIMATE	2009-10 ACTUAL
<b>Yukon Professional Licences (#)</b>				
Insurance Companies	178	178	178	176
Agents, Salespersons, Adjusters and Brokers	1,080	1,080	956	956
Medical Professionals	217	217	197	219
Medical Practice Corporations	36	36	28	35
Chiropractors	8	7	9	9
Dentists	40	40	42	42
Dental Corporations	9	9	7	7
Dental Hygienists/Therapists	37	37	40	40
Denturists	2	2	2	2
Optometrists	6	6	6	6
Pharmacists	48	48	36	36
Physiotherapist	38	38	37	37
Physiotherapist Corporations	1	1	2	1
Licensed Practical Nurses	101	96	95	92
Psychiatric Nurses	6	5	5	4
Collection Agencies	64	64	43	43
Collection Agency Employees	1,757	1,738	1,657	1,657
Real Estate Agencies	5	5	5	5
Real Estate Salespersons	31	31	31	31
Private Investigators and Security Guards	45	45	37	37
Security Agencies	12	12	12	12
Funeral Directors	2	2	2	2
Pawn Brokers and Second Hand Dealers	2	2	3	3

## COMMUNITY SERVICES

## CONSUMER AND SAFETY SERVICES

### Consumer Services

## STATISTICS

	2011-12	Comparable		
	ESTIMATE	2010-11 FORECAST	2010-11 ESTIMATE	2009-10 ACTUAL
<b>Inquiries/Complaints (#)</b>				
Consumer Inquiries	250	250	260	256
Health Professionals (all)	425	425	604	420
Insurance	420	420	380	386
Landlord and Tenant	820	820	800	792
Other	520	520	500	514
<b>Boards of Inquiry/Arbitrations (#)</b>				
Health Professionals (all)	1	1	1	0
Insurance	1	0	1	0
Landlord and Tenant	1	0	1	0
Other	1	0	1	0
<b>Yukon Medical Council</b>				
Letters to Licensing Inquiries (#)	223	223	215	209
Complaints against a Physician	7	7	4	8

## COMMUNITY SERVICES

## CONSUMER AND SAFETY SERVICES Consumer Services

### STATISTICS

	2011-12 ESTIMATE	Comparable		
		2010-11 FORECAST	2010-11 ESTIMATE	2009-10 ACTUAL
<b>Lotteries/Games of Chance Activities</b>				
Licences Issued (#)	125	125	135	133
Amount Wagered:				
- Bingos (\$)	3,000,000	3,000,000	2,825,000	3,338,879
- Raffles and Sport Pools (\$)	800,000	800,000	600,000	839,410
- Casinos, gross profit (\$)	35,000	35,000	33,450	37,889
Prizes:				
- Bingos (\$)	2,200,000	2,200,000	2,000,000	2,351,774
- Raffles and Sport Pools (\$)	250,000	250,000	226,000	260,328
Expenses:				
- Bingos (\$)	230,000	230,000	199,000	239,665
- Raffles and Sport Pools (\$)	30,000	30,000	30,000	35,346
- Casinos (\$)	10,000	10,000	10,000	12,133
Net: Proceeds used for Charitable Objectives				
- Bingos (\$)	570,000	570,000	626,000	747,440
- Raffles and Sport Pools (\$)	520,000	520,000	344,000	543,736
- Casinos (\$)	25,000	25,000	23,450	25,756
Diamond Tooth Gertie's: *				
Blackjack, Wheels of Fortune, Roulette and Red Dog:				
Drop (Amount Wagered \$)	1,114,720	1,114,720	1,840,000	1,834,861
Win (Amount Paid Out \$)	711,393	711,393	1,453,000	1,447,870
Hold (Balance held by organization before expenses \$)	403,327	403,327	387,000	386,991
Poker Revenue (\$)	146,000	146,028	173,000	173,004
Slot Machines:				
Coin In (\$)	15,928,768	15,928,768	17,100,000	17,080,571
Coin Out (\$)	14,830,361	14,830,361	15,814,000	15,786,758
Gross Revenue (\$)	1,098,407	1,098,407	1,286,000	1,293,813

\* Charitable gaming statistics reported on a calendar year basis.

## COMMUNITY SERVICES

## CONSUMER AND SAFETY SERVICES Corporate Affairs

### STATISTICS

- To protect and enhance the public interest in professional and commercial activities.
- To establish and maintain enabling legislation and basic disclosure and information requirements related to commercial activities.

	2011-12 ESTIMATE	Comparable		2009-10
		2010-11 FORECAST	2010-11 ESTIMATE	ACTUAL
<b>Corporate Registry</b>				
All Transactions (#)*	25,500	25,500	25,500	26,988
Revenue (\$)	290,000	290,000	290,000	259,702
<b>Partnership/Business Names Registry</b>				
All Transactions (#)*	2,800	2,800	2,800	2,645
Revenue (\$)	40,000	40,000	40,000	42,247
<b>Personal Property Security</b>				
Financing Statements/Changes (#)	5,400	5,400	5,400	5,480
Searches Conducted (#)**	5,900	5,900	5,900	6,143
Revenue (\$)	52,000	52,000	52,000	77,952
<b>Societies and Cooperatives</b>				
All Transactions (#)*	1,500	1,500	1,500	2,476
Revenue (\$)	6,900	6,900	6,900	8,651
<b>Securities</b>				
Annual Information Form/ Prospectuses filed (#)	3,920	3,920	3,920	5,398
Other Filings (#)	602	602	602	594
Superintendent Orders (#)	15	15	15	30
Revenue (\$)	1,731,100	1,731,100	1,731,100	2,417,754

\* Corporate Affairs Registry System (CARS) Transactions: these are all registrations that are tracked by the computer systems. These do not include phone calls, personal inquiries, searches etc.

\*\* Includes online public searches.

## COMMUNITY SERVICES

## CONSUMER AND SAFETY SERVICES Building Safety

### STATISTICS

	2011 ESTIMATE	Comparable		
		2010 ACTUAL	2010 ESTIMATE	2009 ACTUAL
<b>Codes and Standards *</b>				
Permits Issued (#)				
Building	750	734	700	748
Plumbing	160	159	115	91
Development	100	98	80	52
Electrical	1,200	1,434	1,100	1,082
Gas	375	360	450	478
New Boiler and Pressure Vessels	85	90	75	75
Total Permits Issued	2,670	2,875	2,520	2,526
<b>Building File Information Requests *</b>	1,600	1,520	1,718	1,457
<b>Inspections (#) *</b>				
Building	1,300	1,285	2,000	1,583
Plumbing	350	330	525	569
Electrical	1,700	1,780	1,350	1,643
Elevators	36	40	130	132
Boiler and Pressure Vessels	500	600	1,000	1,246
Gas	425	400	480	478
Total Inspections	4,311	4,435	5,485	5,651

\* Statistics reported on a calendar year basis.

## COMMUNITY SERVICES

## CONSUMER AND SAFETY SERVICES Employment Standards

### STATISTICS

- To ensure compliance with minimum standards of employment for wages and working conditions in order to establish a fair and equitable work environment for the labour force.

	<b>2011-12 ESTIMATE</b>	<i>Comparable</i>		
		2010-11 FORECAST	2010-11 ESTIMATE	2009-10 ACTUAL
Wage Offence Complaints Investigated (#)	130	95	115	110
Wage Offences (#)	155	140	220	229
Inquiries (#)	2,500	2,500	2,500	2,823
Wages Collected (\$)	150,000	120,000	140,000	123,148
Wages Uncollected (\$)	35,000	36,000	34,000	13,590
Certificates for Wages Issued (\$) *	55,000	60,000	60,000	151,515
Certificates for Wages Filed (\$) *	45,000	50,000	25,000	95,267
Administration Fees on Certificates Issued (\$) **	3,000	3,000	1,000	4,232
Assessment of Administrative Penalty (#)	3,000	1,500	2,000	2,000

\* Supplementary certificates are also included in both columns (against Directors of Corporations).

\*\* Estimated administrative fees and penalties levied as a result of changes made in 1998 to the Employment Standards Act.



## COMMUNITY SERVICES

## CONSUMER AND SAFETY SERVICES Motor Vehicles

### STATISTICS

	<b>2011-12 ESTIMATE</b>	<i>Comparable</i>		
		2010-11 FORECAST	2010-11 ESTIMATE	2009-10 ACTUAL
<b>Motor Vehicles Registrations (#)</b>				
Private	26,838	25,083	22,684	26,966
Commercial	5,831	5,640	4,841	5,448
Dealer	157	156	132	174
Motorcycles	1,213	1,116	935	1,019
Snow machine/ATV	1,115	970	933	1,146
Trailer	5,339	4,725	3,444	3,831
Rental	1,098	915	643	727
	<u>41,591</u>	<u>38,605</u>	<u>33,612</u>	<u>39,311</u>
<b>Operators Licences (approximate)</b>				
	26,480	25,961	25,529	25,431

- Above statistics reflect active registrations/licences in a fiscal year, not number issued.

## COMMUNITY SERVICES

REVENUES (\$000s)	2011-12 ESTIMATE	Comparable		
		2010-11 FORECAST	2010-11 ESTIMATE	2009-10 ACTUAL
TAXES AND GENERAL REVENUES				
Protective Services				
Fuel Storage Tank Permits	4	4	4	1
Community Development				
Interest on Local Improvement	150	150	150	173
General Property Tax	3,700	3,478	3,300	3,412
Grant-in-Lieu	150	154	150	155
Library Fines	8	8	8	10
Photocopier Fees	5	5	5	3
Prior Years' Revenues	0	0	0	881
Consumer and Safety Services				
Professional/Consumer Licensing	347	377	347	420
Business/Corporate Licensing	2,120	2,120	2,120	2,806
Building Safety Licences and Fees	290	525	290	511
Employment Standards	3	4	3	4
Private Vehicle Licences	1,198	1,198	1,198	1,164
Commercial Vehicle Licences	2,022	2,022	2,022	2,282
Miscellaneous Motor Vehicle Revenue	371	371	371	489
Total Taxes and General Revenues	10,368	10,416	9,968	12,311
THIRD-PARTY RECOVERIES				
Corporate Services				
Shared Services	481	481	481	254
Protective Services				
Emergency Medical Services	25	52	25	72
Community Development				
Community Recreation/Active Living	87	87	87	83
Sport	323	323	323	330
Community Assessments	453	405	405	339
Water and Sewer Services	412	412	412	220
Mosquito Control	21	21	21	21
Total Third-Party Recoveries	1,802	1,781	1,754	1,319

## COMMUNITY SERVICES

REVENUES (\$000s)	2011-12 ESTIMATE	Comparable		
		2010-11 FORECAST	2010-11 ESTIMATE	2009-10 ACTUAL
RECOVERIES FROM CANADA				
Protective Services				
Prior Years' Recoveries	0	(363)	0	46
Community Development				
Sport	192	252	192	307
Author Readings	4	8	4	6
Consumer and Safety Services				
Motor Vehicle	2	4	2	5
Total Recoveries from Canada	198	(99)	198	364
Amortization of Deferred Capital Contributions	294	286	235	236
TOTAL REVENUES	12,662	12,384	12,155	14,230

## COMMUNITY SERVICES

TRANSFER PAYMENTS (\$000s)	2011-12 ESTIMATE	Comparable		
		2010-11 FORECAST	2010-11 ESTIMATE	2009-10 ACTUAL
LEGISLATED GRANTS				
Community Development				
In-Lieu of Property Taxes	5,454	5,454	5,254	5,138
Home Owner Grants	3,170	3,170	3,170	3,143
Comprehensive Municipal Grants	15,770	14,962	14,962	14,153
Total Legislated Grants	24,394	23,586	23,386	22,434
OTHER TRANSFER PAYMENTS				
Protective Services				
Emergency Measures Preparation	5	5	5	5
Fire Management - FireSmart	850	850	850	1,236
Emergency Medical Services				
- Volunteer Bursary Fund	60	60	60	60
- Volunteer Awards Fund	20	20	20	20
- Volunteer Community Allowances	30	30	30	30
Prior Years' Other Transfer Payments	0	126	0	107
Community Development				
Community/Local Advisory Council				
Operation and Maintenance	70	70	70	78
Community Recreation/Active Living	668	668	668	668
Sport	1,815	1,480	1,480	1,813
Association of Yukon Communities	100	100	100	112
Volunteer Bureau	67	67	67	67
Mae Bachur Animal Shelter	80	75	75	80
Dawson Humane Society	20	20	20	20
Community Library Boards	349	349	349	332
Recycling Fund	80	80	80	60
Northern Strategy - Northern Water				
and Wastewater Operator Program	176	0	0	0
Prior Years' Other Transfer Payments	0	1,250	1,175	1,260
Consumer and Safety Services				
Prior Years' Other Transfer Payments	0	0	0	14
Total Other Transfer Payments	4,390	5,250	5,049	5,962
TOTAL TRANSFER PAYMENTS	28,784	28,836	28,435	28,396