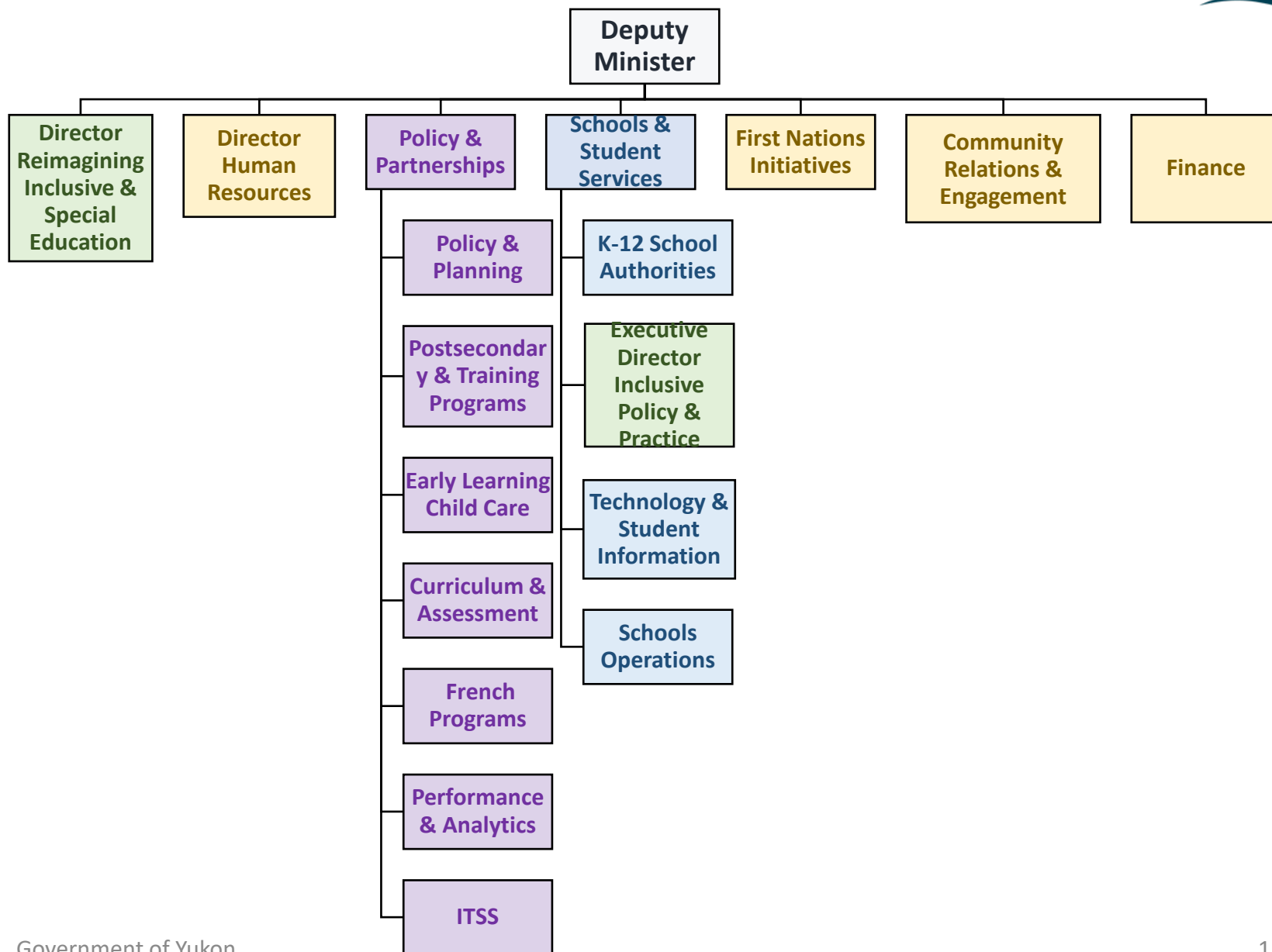




# Department of Education Structure

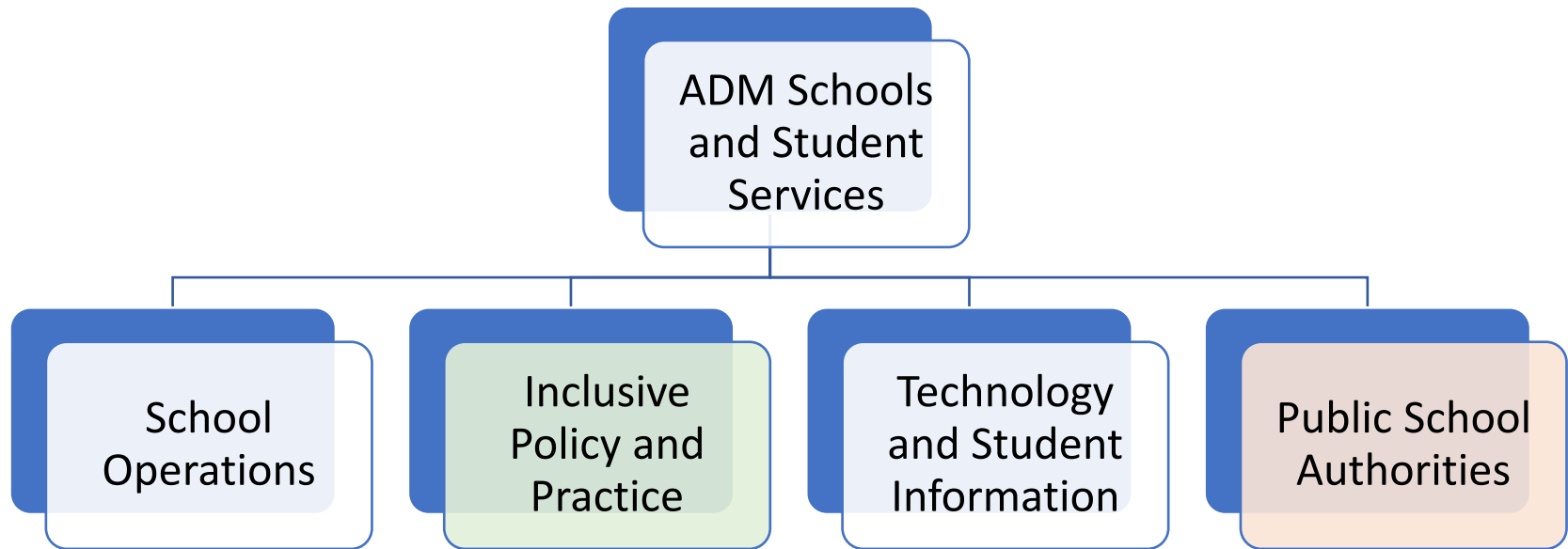
August 2022





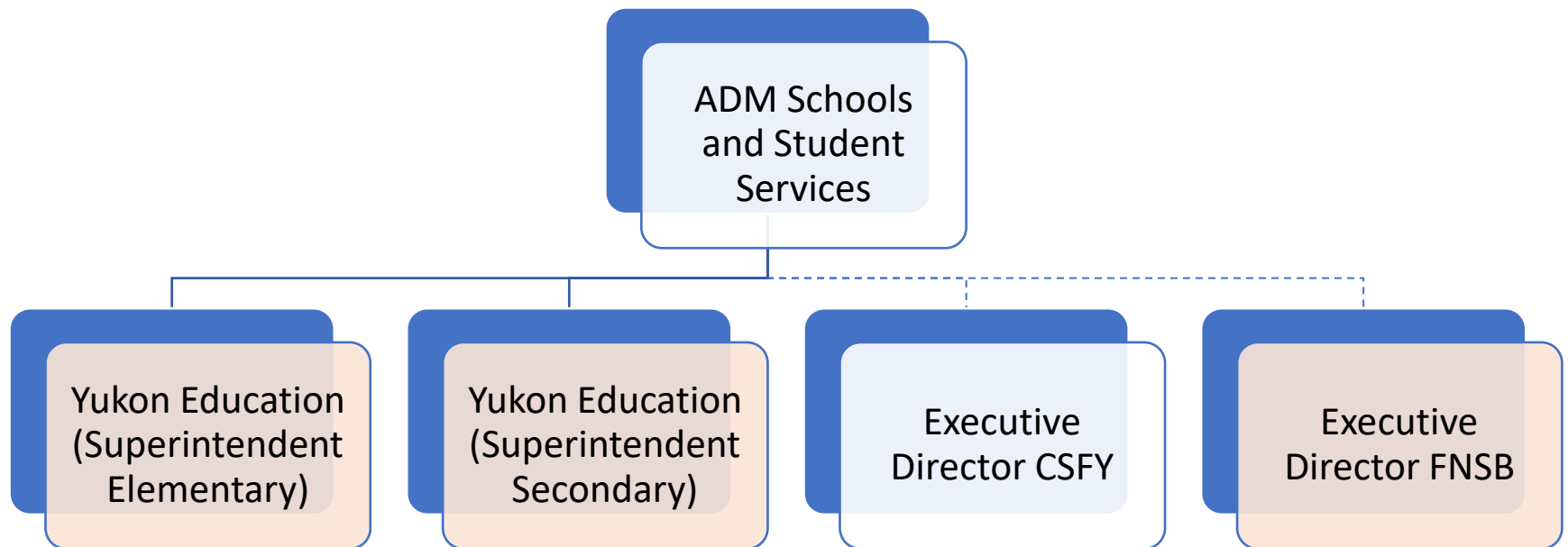


# Branch Areas of Responsibility



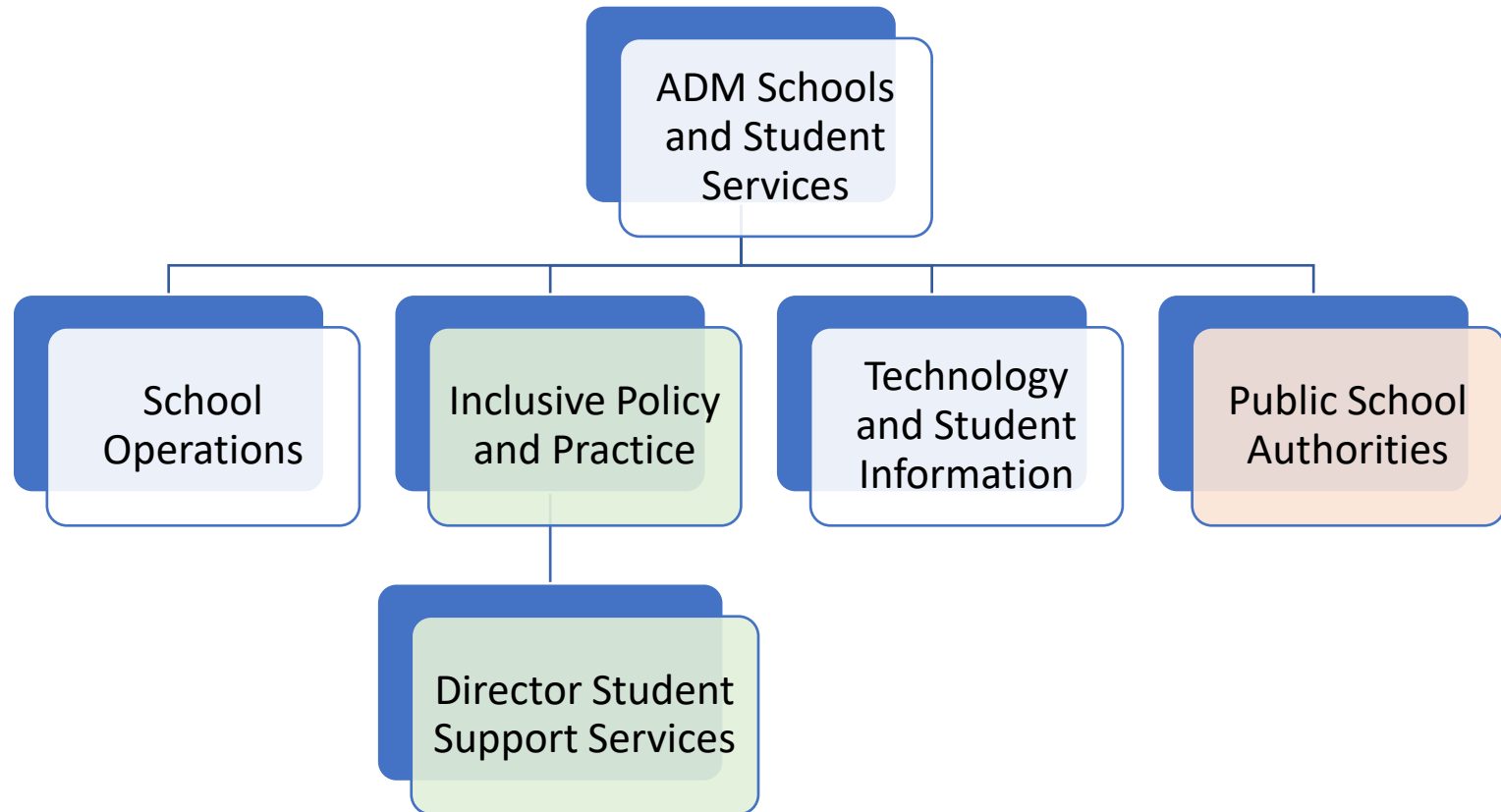


# Public School Authorities





# Executive Director Inclusive Policy and Practice





# Inclusive and Special Education

**Deputy Minister**

**Reimagining Inclusive and Special Education  
(Director)**

Communities of Inquiry  
RISE Workplan  
Actions and Implementation  
Training and Resources