

ELECTIONS OFFICE



VOTE 24
ELECTIONS OFFICE

SPEAKER OF THE ASSEMBLY

Hon. T. Staffen

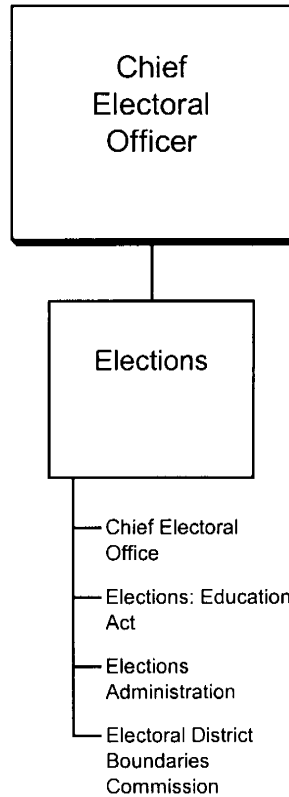
CHIEF ELECTORAL OFFICER

J. Waugh

- To manage and conduct elections of Members of the Yukon Legislative Assembly and school-governing groups.
- To provide administrative support for electoral district boundaries commission.

ELECTIONS OFFICE

RELATIONSHIP BETWEEN ORGANIZATION AND PROGRAMS

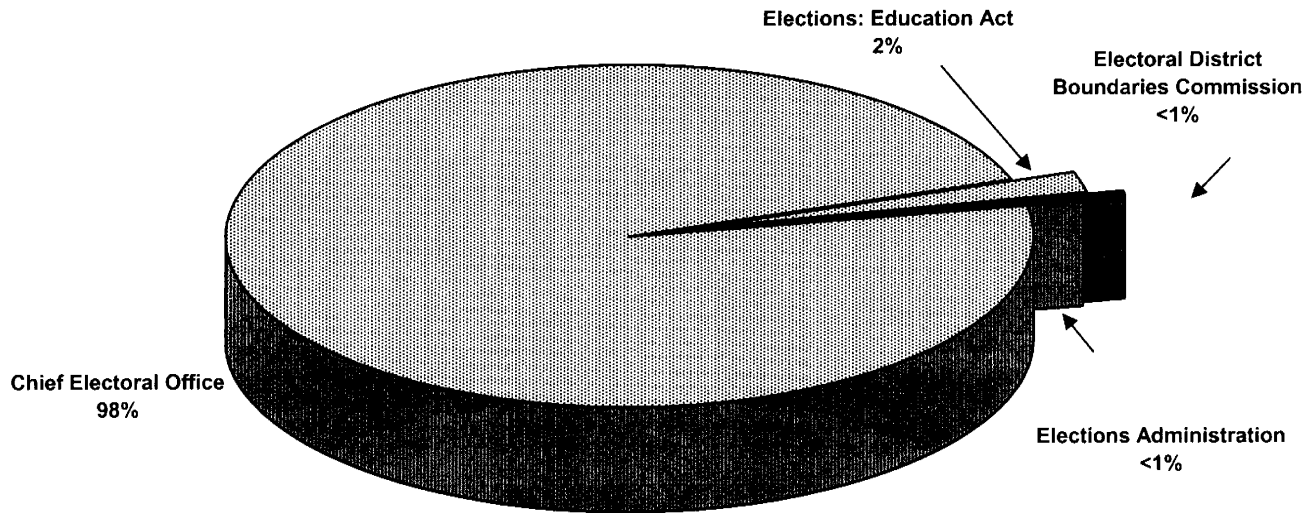


**VOTE 24
ELECTIONS OFFICE**

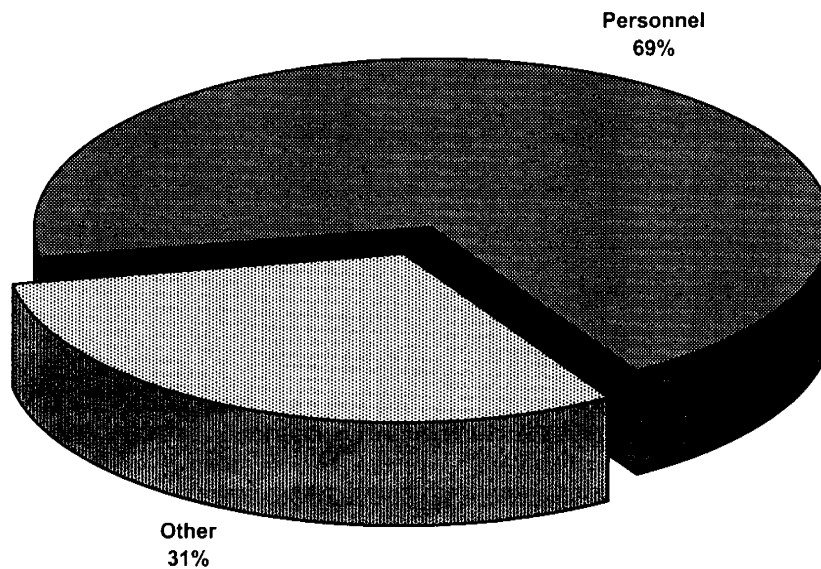
FINANCIAL SUMMARY (\$000s)	2009-10 ESTIMATE	2008-09 FORECAST	% CHANGE	2007-08 ACTUAL
Operation and Maintenance Expenditures				
Elections	357	360	-1%	251
Total Operation and Maintenance Vote 24	357	360	-1%	251
Amortization Expense	0	0	0%	0
Revenues	0	0	0%	0
Allotments				
Personnel	247	237	4%	140
Other	110	123	-11%	111
Transfer Payments	0	0	0%	0
Total Allotments	357	360	-1%	251

**VOTE 24
ELECTIONS OFFICE**

**2009-10 Estimate
Distribution of O&M Expenditures by Activity**



**2009-10 Estimate
Distribution of O&M Expenditures by Allotment**



ELECTIONS OFFICE

ELECTIONS

PROGRAM DESCRIPTION

- Maintain the elections administrative structure in a state of readiness for the call of an election.
- Conduct by-elections and general elections of Members to the Yukon Legislative Assembly.
- Report to the Yukon Legislative Assembly on election-related matters.
- Conduct elections of members of School Councils and trustees of School Boards pursuant to the *Education Act*.
- Provide consultative services and resources regarding election administration to other agencies.
- Provide secretariat services to electoral district boundaries commission.

O&M EXPENDITURES (\$000s)	2009-10 ESTIMATE	2008-09 FORECAST	% CHANGE	2007-08 ACTUAL
Activities				
Chief Electoral Office	350	292	20%	160
Elections: Education Act	7	68	-90%	10
Elections Administration	one dollar	one dollar	0%	0
Electoral District Boundaries Commission	one dollar	one dollar	0%	81
Total Elections	357	360	-1%	251
Allotments				
Personnel	247	237	4%	140
Other	110	123	-11%	111
Transfer Payments	0	0	0%	0
Total Allotments	357	360	-1%	251