

ELECTIONS OFFICE



**VOTE 24
ELECTIONS OFFICE**

SPEAKER OF THE ASSEMBLY

Hon. D. Schneider

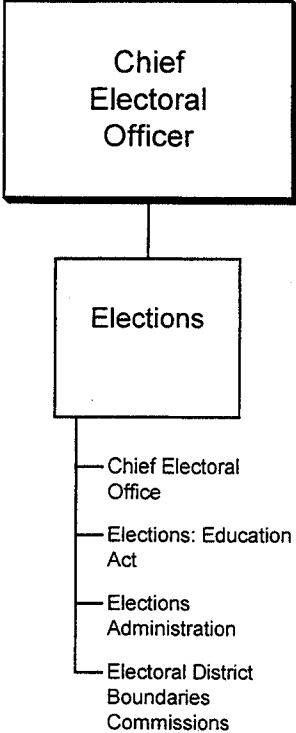
CHIEF ELECTORAL OFFICER

P. Michael

- To manage and conduct elections of members of the Legislative Assembly and school-governing groups.
- To provide administrative support for electoral district boundaries commissions.

ELECTIONS OFFICE

RELATIONSHIP BETWEEN ORGANIZATION AND PROGRAMS



**VOTE 24
ELECTIONS OFFICE**

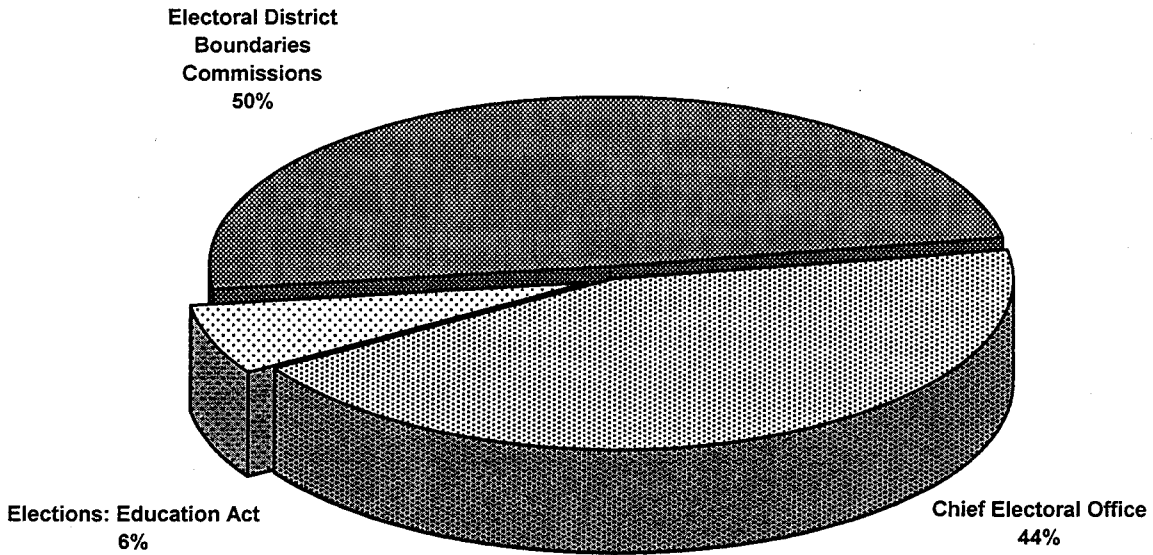
FINANCIAL SUMMARY (\$000'S)	2001-02 ESTIMATE	2000-01 FORECAST	% CHANGE	1999-00 ACTUAL
Operation and Maintenance Expenditures				
Elections	232	543	-57%	321
Total Operation and Maintenance Vote 24	232	543	-57%	321
Operation and Maintenance Recoveries				
	0	0	0%	0
Revenue				
	0	0	0%	0
Allotments				
Personnel	81	96	-16%	86
Other	151	447	-66%	235
Transfer Payments	0	0	0%	0
Total Allotments	232	543	-57%	321

Note:

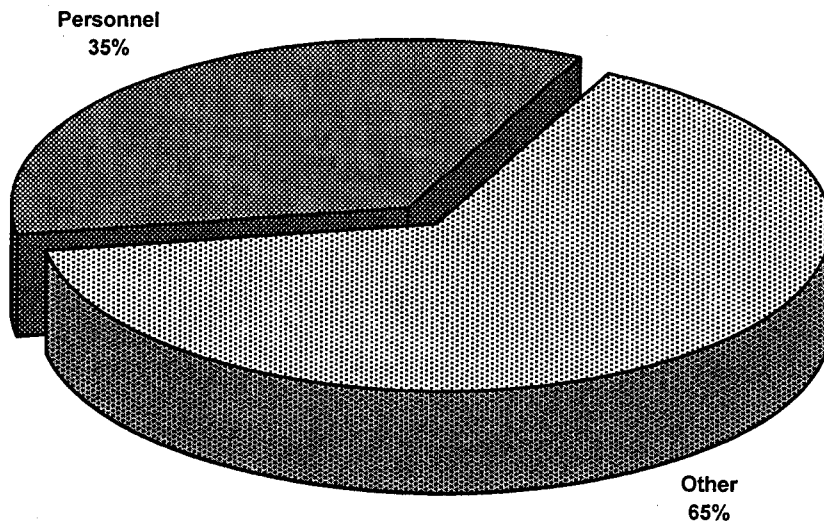
Restated 1999-00 Actual to reflect transfer of Elections Program from the Yukon Legislative Assembly to a new vote.

**VOTE 24
ELECTIONS OFFICE**

**2001-02 Estimate
Distribution of O&M Expenditures by Activity**



**2001-02 Estimate
Distribution of O&M Expenditures by Allotment**



ELECTIONS OFFICE

ELECTIONS

PROGRAM DESCRIPTION

- Maintain the elections administrative structure in a state of readiness for the call of an election.
- Conduct by-elections and general elections of members to the Yukon Legislative Assembly.
- Report to the Yukon Legislative Assembly on election-related matters.
- Conduct elections of members of School Councils and trustees of School Boards pursuant to the Education Act.
- Provide consultative services and resources regarding election administration to other agencies.
- Provide secretariat services to electoral district boundaries commissions.

O&M EXPENDITURES (\$000'S)	2001-02 ESTIMATE	2000-01 FORECAST	% CHANGE	1999-00 ACTUAL
Activities				
Chief Electoral Office	102	140	-27%	171
Elections: Education Act	15	46	-67%	0
Elections Administration	one dollar	357	-100%	150
Electoral District Boundaries Commissions	115	0	100%	0
Total Elections	232	543	-57%	321
Allotments				
Personnel	81	96	-16%	86
Other	151	447	-66%	235
Transfer Payments	0	0	0%	0
Total Allotments	232	543	-57%	321