

# JUSTICE

**VOTE 08**  
**DEPARTMENT OF JUSTICE**

**MINISTER**

**Hon. P. Buckway**

**DEPUTY MINISTER**

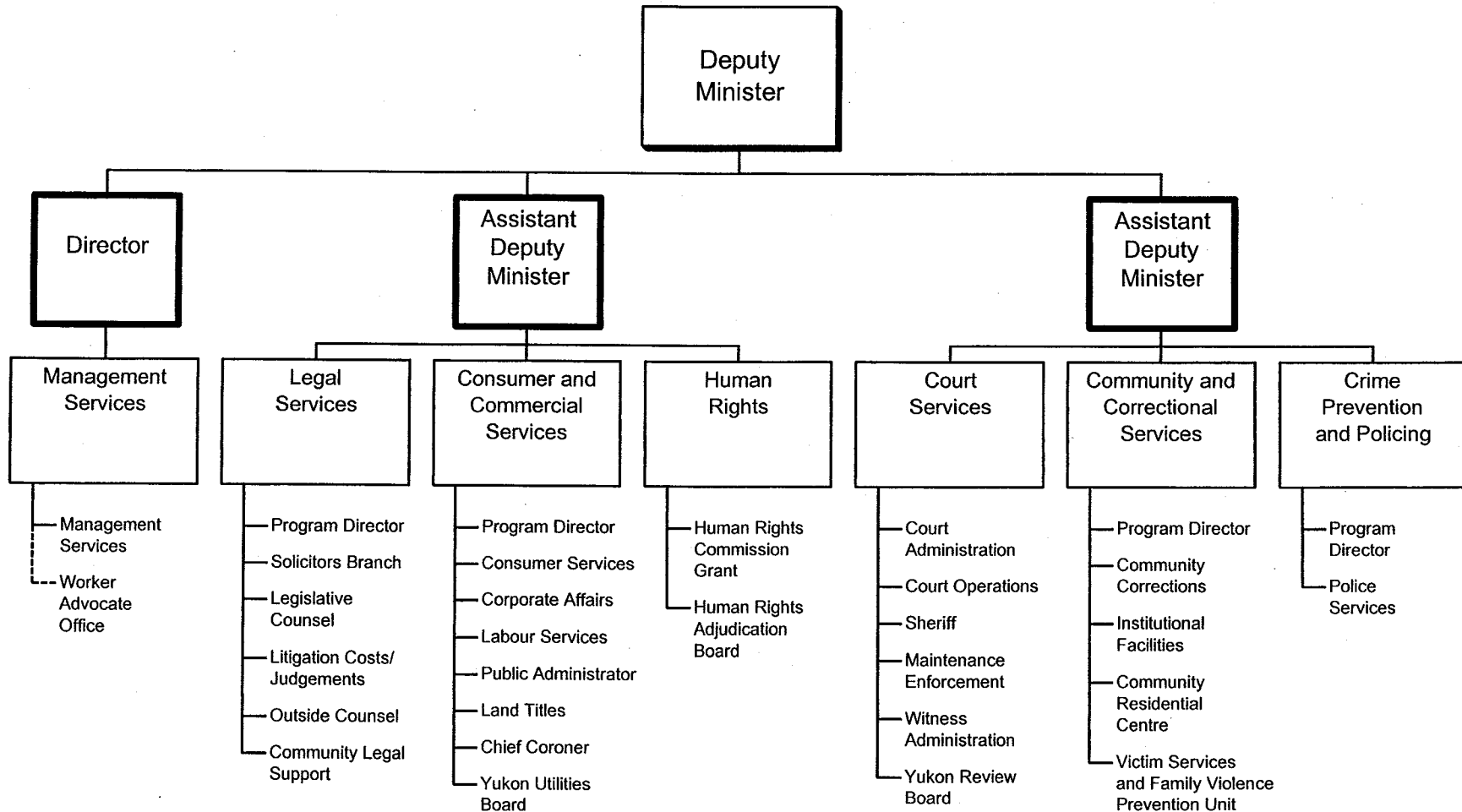
**W. Byers**

**DEPARTMENTAL OBJECTIVE**

- The Yukon Department of Justice operates to:
  - enhance public confidence in, and respect for the law and society;
  - promote an open and accessible system of justice that provides fair and equal services to all Yukon citizens;
  - ensure that the administration of justice operates for the benefit of all persons in the Yukon;
  - work toward an effective and responsive correctional system to manage offenders in ways that promote rehabilitation and ensure public safety;
  - ensure the Government of the Yukon receives high quality legal advice and services;
  - promote effective policing, crime prevention and community justice initiatives in our communities;
  - encourage responsible commercial activity and protect consumer interests; and
  - encourage respect for individual, collective and human rights.

# DEPARTMENT OF JUSTICE

## RELATIONSHIP BETWEEN ORGANIZATION AND PROGRAMS



**VOTE 08  
DEPARTMENT OF JUSTICE**

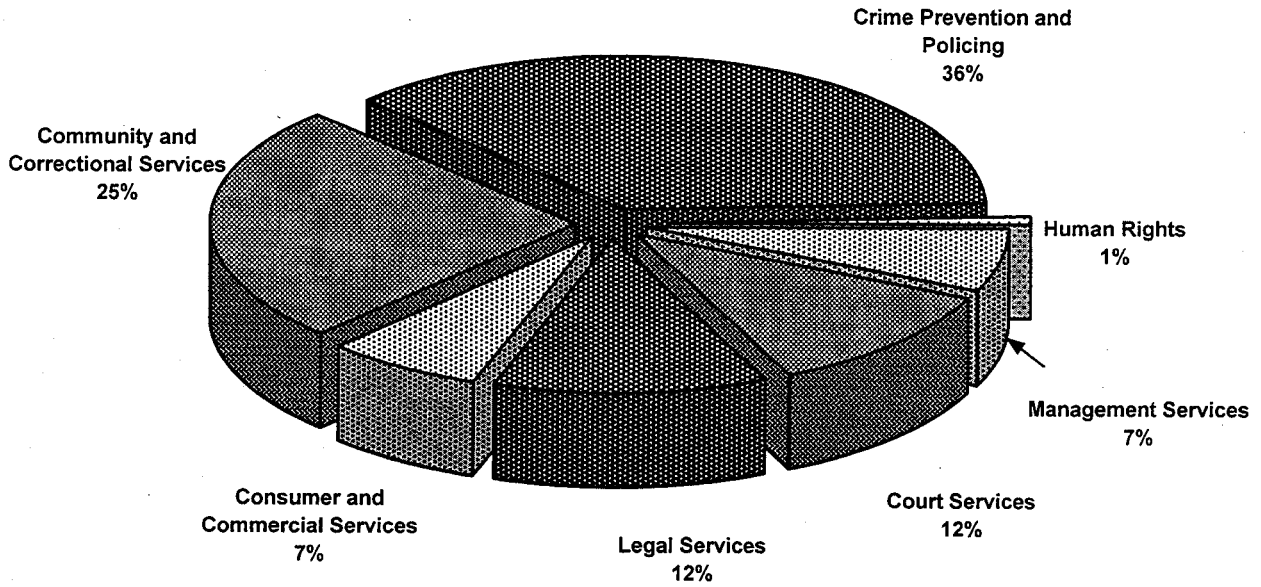
<b>FINANCIAL SUMMARY (\$000'S)</b>	<b>2001-02 ESTIMATE</b>	<b>2000-01 FORECAST</b>	<b>% CHANGE</b>	<b>1999-00 ACTUAL</b>
<b>Operation and Maintenance Expenditures</b>				
Management Services	2,249	2,046	10%	1,889
Court Services	3,995	4,290	-7%	3,781
Legal Services	4,138	3,693	12%	3,502
Consumer and Commercial Services	2,458	2,729	-10%	2,492
Community and Correctional Services	8,596	8,759	-2%	8,437
Crime Prevention and Policing	12,670	12,822	-1%	11,491
Human Rights	263	263	0%	458
<b>Total Operation and Maintenance Vote 08</b>	<b>34,369</b>	<b>34,602</b>	<b>-1%</b>	<b>32,050</b>
<b>Operation and Maintenance Recoveries</b>	<b>1,275</b>	<b>1,410</b>	<b>-10%</b>	<b>1,033</b>
<b>Revenue</b>	<b>1,408</b>	<b>1,408</b>	<b>0%</b>	<b>1,458</b>
<b>Allotments</b>				
Personnel	15,008	15,086	-1%	14,011
Other	16,435	16,475	0%	15,077
Transfer Payments	2,926	3,041	-4%	2,962
<b>Total Allotments</b>	<b>34,369</b>	<b>34,602</b>	<b>-1%</b>	<b>32,050</b>

Note:

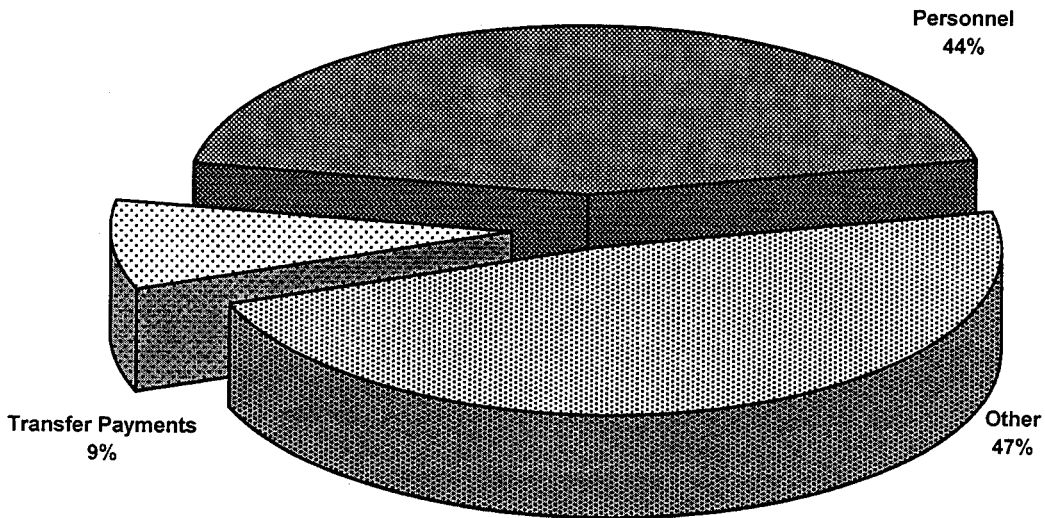
Restated 2000-01 Forecast and 1999-00 Actual to be consistent with the 2001-02 Estimate presentation.

VOTE 08  
DEPARTMENT OF JUSTICE

2001-02 Estimate  
Distribution of O&M Expenditures by Program



2001-02 Estimate  
Distribution of O&M Expenditures by Allotment



**JUSTICE**

**MANAGEMENT SERVICES**

**PROGRAM OBJECTIVES**

- To assist and support appropriate and consistent departmental policy and program delivery through the provision of planning; analysis; information and communications; and financial, human, and physical resource management to program branches.
- To maintain and support a worker advocate program that assists injured workers.

<b>O&amp;M EXPENDITURES (\$000'S)</b>	<b>2001-02 ESTIMATE</b>	<b>2000-01 FORECAST</b>	<b>% CHANGE</b>	<b>1999-00 ACTUAL</b>
<b>Activity</b>				
Management Services	2,249	2,046	10%	1,889
<b>Total Management Services</b>	<b>2,249</b>	<b>2,046</b>	<b>10%</b>	<b>1,889</b>
<b>Allotments</b>				
Personnel	1,738	1,659	5%	1,407
Other	511	387	32%	332
Transfer Payments	0	0	0%	150
<b>Total Allotments</b>	<b>2,249</b>	<b>2,046</b>	<b>10%</b>	<b>1,889</b>

# JUSTICE

## COURT SERVICES

### PROGRAM OBJECTIVE

- To enhance and facilitate the integrity and efficient operation of the court system through the provision of administrative, enforcement and support services to the courts, the judiciary, and other participants in judicial processes.

O&M EXPENDITURES (\$000'S)	2001-02 ESTIMATE	2000-01 FORECAST	% CHANGE	1999-00 ACTUAL
<b>Activities</b>				
Court Administration	653	617	6%	687
Court Operations	2,608	2,741	-5%	2,371
Sheriff	280	276	1%	236
Maintenance Enforcement	290	476	-39%	257
Witness Administration	116	115	1%	146
Yukon Review Board	48	65	-26%	84
<b>Total Court Services</b>	<b>3,995</b>	<b>4,290</b>	<b>-7%</b>	<b>3,781</b>
<b>Allotments</b>				
Personnel	2,982	2,950	1%	2,733
Other	1,013	1,340	-24%	1,048
Transfer Payments	0	0	0%	0
<b>Total Allotments</b>	<b>3,995</b>	<b>4,290</b>	<b>-7%</b>	<b>3,781</b>

# JUSTICE

## COURT SERVICES

### STATISTICS

	2001-02 ESTIMATE	2000-01 FORECAST	% CHANGE	1999-00 ACTUAL
<b>Supreme Court</b>				
Civil Files Opened (#)	550	550	0%	528
Civil Documents Filed (#)	7,800	7,500	4%	7,802
Summary Conviction Appeals (#) *	20	15	33%	12
<b>Court of Appeal</b>				
Files Opened (#)	25	25	0%	22
Appeal Documents Filed (#)	150	150	0%	172
<b>Federal Court of Canada Files</b>				
Files Opened (#)	3	2	50%	1
Federal Documents Filed (#)	10	10	0%	6
<b>Territorial Court</b>				
Civil Files Opened (#)	500	450	11%	390
Civil Documents Filed (#)	4,500	4,500	0%	4,281
Adult Charges Laid (#)	4,000	4,300	-7%	3,726
Young Offender Charges Laid (#)	1,000	1,300	-23%	789
S.C.O.T. ** Tickets (Adult and Youth)	4,000	4,000	0%	3,593
<b>Witness Administration</b>				
Witnesses (#)	900	870	3%	878
<b>Maintenance Enforcement Program</b>				
Files Opened (#)	100	100	0%	93
Files Active (#)	600	600	0%	606
<b>Sheriff</b>				
Documents Served (#)	700	700	0%	677
Seizure of Goods and Chattels (#)	150	150	0%	146
Judge and Jury Trials (#)	15	15	0%	11
Jurors Served (#)	2,000	2,000	0%	1,339

\* Included in total civil files opened.

\*\* Summary Conviction Ordinance Tickets.



# JUSTICE

## LEGAL SERVICES

### PROGRAM OBJECTIVE

- To assist and ensure appropriate and consistent action by all government departments and agencies through the provision of legal advice and review of policies, conduct of civil actions and prosecution of offenses, and development of territorial legislation.

O&M EXPENDITURES (\$000'S)	2001-02 ESTIMATE	2000-01 FORECAST	% CHANGE	1999-00 ACTUAL
<b>Activities</b>				
Program Director	333	196	70%	178
Solicitors Branch	1,023	993	3%	937
Legislative Counsel	458	509	-10%	342
Litigation Costs/Judgements	10	10	0%	127
Outside Counsel	529	200	165%	237
Community Legal Support	1,785	1,785	0%	1,681
<b>Total Legal Services</b>	<b>4,138</b>	<b>3,693</b>	<b>12%</b>	<b>3,502</b>
<b>Allotments</b>				
Personnel	1,597	1,460	9%	1,308
Other	756	448	69%	515
Transfer Payments	1,785	1,785	0%	1,679
<b>Total Allotments</b>	<b>4,138</b>	<b>3,693</b>	<b>12%</b>	<b>3,502</b>

## JUSTICE

## CONSUMER AND COMMERCIAL SERVICES

### PROGRAM OBJECTIVES

- To encourage and maintain equitable and responsible employment practices and to promote public interest in positive labour management relations.
- To encourage and maintain orderly and responsible commercial activity and professional services and to protect consumer interests through education, information and enforcement.
- To investigate all sudden and unnatural deaths to clarify the facts, focus attention on preventable deaths and protection of public health or safety.
- To administer estates of Yukoners who die testate or intestate where a legal representative has not assumed responsibility and act as trustee of estates of minor children, mentally incompetent, missing persons and protect the rights and interests of minor children.

O&M EXPENDITURES (\$000'S)	2001-02 ESTIMATE	2000-01 FORECAST	% CHANGE	1999-00 ACTUAL
<b>Activities</b>				
Program Director	114	9	1167%	16
Consumer Services	456	453	1%	395
Corporate Affairs	405	393	3%	379
Labour Services	488	485	1%	355
Public Administrator	172	170	1%	148
Land Titles	344	340	1%	348
Chief Coroner	288	359	-20%	462
Yukon Utilities Board	191	191	0%	60
Prior Years' Activities	0	329	-100%	329
<b>Total Consumer and Commercial Services</b>	<b>2,458</b>	<b>2,729</b>	<b>-10%</b>	<b>2,492</b>
<b>Allotments</b>				
Personnel	1,862	1,739	7%	1,547
Other	496	561	-12%	616
Transfer Payments	100	429	-77%	329
<b>Total Allotments</b>	<b>2,458</b>	<b>2,729</b>	<b>-10%</b>	<b>2,492</b>

## JUSTICE

## CONSUMER AND COMMERCIAL SERVICES

### Consumer Services

## STATISTICS

- To provide safeguards to consumers in acquiring goods and services, in order to contribute to the efficient functioning of the marketplace and to ensure that those licensed to provide services are adequately qualified.

	2001-02 ESTIMATE	2000-01 FORECAST	% CHANGE	1999-00 ACTUAL
<b>Yukon Professional Licences (#)</b>				
Insurance Companies	180	180	0%	176
Agents, Salespersons, Adjusters and Brokers	300	300	0%	314
Medical Professionals	120	120	0%	130
Medical Corporations	30	30	0%	30
Chiropractors	9	9	0%	11
Dental Professionals	35	35	0%	34
Dental Corporations	4	4	0%	4
Dental Hygienists/Therapists	25	25	0%	25
Dental Technicians	1	1	0%	1
Optometrists	4	4	0%	4
Pharmaceutical Chemists	30	30	0%	25
Nursing Assistants	70	70	0%	62
Collection Agencies	16	16	0%	20
Collection Agency Employees	500	500	0%	520
Government Notaries	2	2	0%	2
Private Notaries	25	25	0%	25
Real Estate Agencies	9	9	0%	9
Real Estate Salespersons	45	45	0%	44
Private Investigators and Security Guards	70	70	0%	56
Security Agencies	16	16	0%	16
Funeral Directors	2	2	0%	2
Pawn Brokers and Second Hand Dealers	3	3	0%	3

## JUSTICE

### CONSUMER AND COMMERCIAL SERVICES Consumer Services

## STATISTICS

	2001-02 ESTIMATE	2000-01 FORECAST	% CHANGE	1999-00 ACTUAL
<b>Professional Inquiries to Practice</b>				
Medical	500	400	25%	621
Dental	165	100	65%	145
Nursing	85	85	0%	75
Pharmacists	65	50	30%	62
Insurance	700	500	40%	636
Security/Investigator	200	100	100%	64
Real Estate	125	100	25%	64
Other	450	350	29%	328
<b>Consumer Complaints and Inquiries (#)</b>				
Consumer Inquiries	600	500	20%	486
Landlord and Tenant	1,000	1,000	0%	735
Lottery and Games of Chance	1,000	1,000	0%	756
<b>Boards of Inquiry/Arbitrations (#)</b>				
Landlord and Tenant	0	0	0%	0
Real Estate	0	0	0%	0
Medical	10	8	25%	8
Pharmacists	1	0	100%	0
Dental	1	0	100%	0
Insurance	1	2	-50%	2

**JUSTICE**

**CONSUMER AND COMMERCIAL SERVICES**  
**Consumer Services**

**STATISTICS**

	2001-02 ESTIMATE	2000-01 FORECAST	% CHANGE	1999-00 ACTUAL
<b>Lotteries/Games of Chance Activities</b>				
Licenses Issued (#)	170	160	6%	191
Amount Wagered:				
- Bingos (\$)	3,850,000	3,500,000	10%	2,837,270
- Raffles and Sport Pools (\$)	600,000	600,000	0%	553,178
- Casinos, gross profit (\$)	50,000	50,000	0%	38,965
Prizes:				
- Bingos (\$)	2,750,000	2,450,000	12%	2,019,748
- Raffles and Sport Pools (\$)	200,000	200,000	0%	153,507
Expenses:				
- Bingos (\$)	280,000	350,000	-20%	186,696
- Raffles and Sport Pools (\$)	35,000	35,000	0%	28,358
- Casinos (\$)	15,000	15,000	0%	13,554
Net: Proceeds used for Charitable Objects				
- Bingos (\$)	820,000	700,000	17%	630,826
- Raffles and Sport Pools (\$)	365,000	365,000	0%	371,313
- Casinos (\$)	35,000	35,000	0%	25,411
Diamond Tooth Gertie's:				
Blackjack, Wheels of Fortune, Roulette and Red Dog:				
Drop (Amount Wagered \$)	1,250,000	1,250,000	0%	1,305,407
Win (Amount Paid Out \$)	900,000	900,000	0%	937,278
Hold (Balance held by organization before expenses \$)	350,000	350,000	0%	368,129
Poker Revenue (\$)	47,000	47,000	0%	45,027
Slot Machines:				
Coin In (\$)	11,000,000	11,000,000	0%	10,420,918
Coin Out (\$)	10,000,000	10,000,000	0%	9,531,398
Gross Revenue (\$)	1,000,000	1,000,000	0%	889,520

## JUSTICE

### CONSUMER AND COMMERCIAL SERVICES Corporate Affairs

#### STATISTICS

- To protect and enhance the public interest in professional and commercial activities.
- To establish and maintain enabling legislation and basic disclosure and information requirements related to commercial activities.

	2001-02 ESTIMATE	2000-01 FORECAST	% CHANGE	1999-00 ACTUAL
<b>Corporate Registry</b>				
All Transactions (#)*	9,300	9,000	3%	9,794
Revenue (\$)	180,000	162,000	11%	191,000
<b>Partnership/Business Names Registry</b>				
All Transactions (#)*	3,000	3,400	-12%	2,530
Revenue (\$)	36,000	38,000	-5%	30,000
<b>Personal Property Security</b>				
Financing Statements/Changes (#)	6,600	6,600	0%	6,415
Searches Conducted (#)	4,800	4,800	0%	5,207
Revenue (\$)	75,000	75,000	0%	79,000
<b>Societies</b>				
All Transactions (#)*	1,100	1,100	0%	1,360
Revenue (\$)	6,000	6,000	0%	6,600
<b>Securities</b>				
Annual Information Form/ Prospectuses filed (#)	700	700	0%	700
Brokers/Salespersons Registration All Transactions (#)*	2,500	2,500	0%	3,427
Other Filings (#)	500	500	0%	600
Registrar's Orders (#)	70	70	0%	57
Revenue (\$)	428,000	220,000	95%	412,000

\* All Transactions: these are all registrations that are tracked by the computer systems (CARS). These do not include phone calls, personal inquiries, etc.

## JUSTICE

### CONSUMER AND COMMERCIAL SERVICES Labour Services

#### STATISTICS

- To ensure compliance with minimum standards of employment for wages and working conditions in order to establish a fair and equitable work environment for the labour force.

	2001-02 ESTIMATE	2000-01 FORECAST	% CHANGE	1999-00 ACTUAL
Wage Offence Complaints Investigated (#)	200	190	5%	146
Wage Offences (#)	350	340	3%	165
Inquiries (#)	3,000	3,000	0%	2,811
Wages Collected (\$)	250,000	150,000	67%	54,240
Wages Uncollected (\$)	20,000	7,500	167%	13,365
Certificates for Wages Issued (\$)	135,000	100,000	35%	894,474
Certificates for Wages Filed (\$)	75,000	35,000	114%	894,474
Administration Fees on Certificates Issued (\$)*	15,000	10,000	50%	13,171
Assessment of Administrative Penalty (#) *	3,000	500	500%	0

\* Estimated administrative fees and penalties levied as a result of changes made in 1998 to the Employment Standards Act.

## JUSTICE

### CONSUMER AND COMMERCIAL SERVICES Public Administrator

#### STATISTICS

- To protect the assets of estates on behalf of beneficiaries, minors and mentally incapacitated persons.
- To protect the personal and property interests of minor children.

	2001-02 ESTIMATE	2000-01 FORECAST	% CHANGE	1999-00 ACTUAL
Total Deaths (#)	130	130	0%	159
Missing Persons (#)	3	3	0%	2
Minor Children (#)	20	20	0%	15
Estate Assists (#) *	110	110	0%	142
Estate Files Opened in Period (#)	20	20	0%	17
Total Estate Files Open (#)	165	165	0%	152
Official Guardian Files (#)	20	20	0%	16
Mental Health Files (#)	5	5	0%	5
Public Administrator Estate Fees (\$)	2,000	10,000	-80%	2,660

#### Funds in Trust at March 31, 2000

Savings (\$)	562,357
Guaranteed Investment Certificates (\$)	141,604
Canada Savings Bonds (\$)	nil
Shares Held in Trust (# - no value attached)	2,000

\* Includes residents of Yukon who passed away out of the territory.



## JUSTICE

### CONSUMER AND COMMERCIAL SERVICES Land Titles

#### STATISTICS

- To provide a guaranteed record for the public of the ownership of interests in and boundaries of real property in order to ensure the efficient operation of the real estate market.
- To establish and maintain enabling legislation and basic disclosure and information requirements related to commercial activities.

	2001-02 ESTIMATE	2000-01 FORECAST	% CHANGE	1999-00 ACTUAL
Documents Registered (#)	4,500	4,000	13%	4,414
New Titles Issued (#)	1,400	1,250	12%	1,346
Condominium Titles Issued (#)	150	130	15%	60
Yukon Road Titles (#)	15	13	15%	34
Survey Plans Registered (#)	230	250	-8%	240
Caveats (Notices) (#)	170	150	13%	231
Certificates of Charge (Mortgages) (#)	950	950	0%	966
Certificates of Search (#)	7,500	7,300	3%	8,545
General Registry Certificates (#) *	2,200	2,000	10%	2,200

\* General Registry Certificates are done on a visual basis for most search purposes.

## JUSTICE

### CONSUMER AND COMMERCIAL SERVICES Chief Coroner

#### STATISTICS

- To investigate for the public, unexpected and unnatural deaths, and to recommend changes to prevent similar deaths.
- To focus attention on preventable deaths and the public's health and safety.

	2001-02 ESTIMATE	2000-01 FORECAST	% CHANGE	1999-00 ACTUAL
<b>Case Work (#)</b>				
Coroners' Cases	56	55	2%	58
Autopsies	37	36	3%	32
Inquests	3	3	0%	2
Judgements of Inquiry *	10	6	67%	2
<b>Manner of Death (#)</b>				
Natural	26	25	4%	26
Suicide	6	7	-14%	9
Homicide	1	1	0%	2
Accident	23	22	5%	21
Undetermined	0	0	0%	0
Total Coroners' Cases	56	55	2%	58

\* In 2000-01 the Coroners Office began conducting more Judgements of Inquiry in cases where the death is deemed to be unnatural.

## JUSTICE

### COMMUNITY AND CORRECTIONAL SERVICES

#### PROGRAM OBJECTIVES

- To contribute to the protection of society and the health of communities and individuals using a Restorative Justice framework which provides community and institutional based opportunities for healing and reparation.
- To provide programs and services for victims and offenders, that have as their primary goal the safe integration of offenders into communities as law-abiding citizens.

<b>O&amp;M EXPENDITURES (\$000'S)</b>	2001-02 ESTIMATE	2000-01 FORECAST	% CHANGE	1999-00 ACTUAL
<b>Activities</b>				
Program Director	479	373	28%	301
Community Corrections	943	906	4%	975
Institutional Facilities	5,791	6,279	-8%	5,913
Community Residential Centre	316	176	80%	247
Victim Services and Family Violence Prevention Unit	1,067	1,025	4%	1,001
<b>Total Community and Correctional Services</b>	<b>8,596</b>	<b>8,759</b>	<b>-2%</b>	<b>8,437</b>
<b>Allotments</b>				
Personnel	6,481	6,982	-7%	6,799
Other	1,621	1,497	8%	1,423
Transfer Payments	494	280	76%	215
<b>Total Allotments</b>	<b>8,596</b>	<b>8,759</b>	<b>-2%</b>	<b>8,437</b>

## JUSTICE

### COMMUNITY AND CORRECTIONAL SERVICES Community Corrections

#### STATISTICS

- Community Corrections administers community based corrections programs. These programs enable the courts to consider a range of alternatives to imprisonment in the sentencing process. They are designed primarily for low risk offenders who present minimal danger to the public at the time of sentencing, or for offenders for whom it has been determined risk can be managed in a community setting.

	2001-02 ESTIMATE	2000-01 FORECAST	% CHANGE	1999-00 ACTUAL
<b>Probation</b>				
Average Offender Count (#) *	630	600	5%	584
New Admissions (#)	670	650	3%	671
Pre-Sentence Reports (#) **	315	300	5%	296
Fine Option Program (#)	60	40	50%	70
Conditional Sentences (#)	95	90	6%	91

\* Based on average monthly counts.

\*\* Includes both Pre-Sentence and Bail Supervision Reports. In the past years, the number of Bail Supervision Reports ordered by the courts has increased significantly.

## JUSTICE

### COMMUNITY AND CORRECTIONAL SERVICES Institutional Facilities Whitehorse Correctional Centre

#### STATISTICS

- The Whitehorse Correctional Centre is a medium security correctional facility for adult men and women. The centre accommodates inmates serving sentences of less than two years.

	2001-02 ESTIMATE	2000-01 FORECAST	% CHANGE	1999-00 ACTUAL
<b>Yukon Adults Average Daily Inmate Cost</b>				
Daily Costs (\$) *	260	252	3%	248
Total Days Stay (#)	23,000	22,000	5%	20,531
<b>Average Offenders on Register and Actual, by Inmate Status</b>				
On Register (#)	65	60	8%	56
Sentenced (#)	40	40	0%	38
Remand (#)	25	20	25%	18
<b>Total Admissions</b>				
Sentenced Admissions (#)	420	400	5%	382
Remand Admissions (#)	275	255	8%	236

\* Average daily inmate cost is based on overall budget for the Whitehorse Correctional Centre as reported to Canadian Centre for Justice Statistics (CCJS).

## JUSTICE

### COMMUNITY AND CORRECTIONAL SERVICES Victim Services and Family Violence Prevention Unit Assaultive Husbands Program

#### STATISTICS

- Individual and group counselling and support services are provided for perpetrators of wife assault. Men undergo an extensive assessment process, and are either accepted for group, referred to another agency, referred back to the original referral sources or, occasionally, seen individually for short-term counselling or therapy.

	2001-02 ESTIMATE	2000-01 FORECAST	% CHANGE	1999-00 ACTUAL
Men Assessed or Partially Assessed (#)	345	314	10%	286
Direct Service Hours (#)	8,863	8,058	10%	7,326
Community Assessments (#)	85	85	0%	105
Men Participating in Group (#)	118	108	9%	99
Court or Parole Referrals (#)	242	220	10%	200
Women Interviewed (%)	60%	55%	n/a	48%
Friends/Family Members Receiving Counselling Support (#)	15	14	7%	12
Appointments (#)	1,603	1,527	5%	1,387
Training to Other Service Providers (#)	146	146	0%	146

#### 1999-00 Assessments by Community

Carcross	8
Carmacks	6
Dawson City	7
Haines Junction	6
Faro	4
Mayo	2
Old Crow	27
Pelly/Stewart	1
Ross River	3
Teslin	14
Watson Lake	22
British Columbia	1
Alberta	4
Total	<u>105</u>

## JUSTICE

### COMMUNITY AND CORRECTIONAL SERVICES Victim Services and Family Violence Prevention Unit Family Violence Prevention Unit Victims Program

#### STATISTICS

- Programs provided for victims include the Support Group for Women in abusive relationships, individual counselling for victims of spousal abuse and sexual assault, advocacy and support services, case management with the Assaultive Husbands' Program and liaison with the criminal justice system.

	2001-02 ESTIMATE	2000-01 FORECAST	% CHANGE	1999-00 ACTUAL
<b>Total Women</b>				
Clients (#)	300	300	0%	195
<b>Status</b>				
Wife Assault (#)	150	100	50%	117
Sexual Assault (#)	40	40	0%	32
Offender (#)	40	0	100%	0
Adult Survivors (#)	50	50	0%	22
Other (Anger) (#)	60	60	0%	24
<b>Service</b>				
Individual Counselling (#)	200	200	0%	122
Court Support (#)	10	10	0%	5
Intake Only (#)	40	50	-20%	27
Pre-Group (#)	40	50	-20%	52
Support Group (#)	90	100	-10%	85
Follow-Up Group (#)	25	35	-29%	6
Direct Service Client Hours (#)	3,000	3,500	-14%	1,090
<b>Community</b>				
Whitehorse (#)	250	250	0%	165
Other Communities (#)	50	50	0%	30
Workshop/Presentations (#) (Teen Parent Centre, College, Communities)	25	30	-17%	6

**JUSTICE**

**COMMUNITY AND CORRECTIONAL SERVICES  
Victim Services and Family Violence Prevention Unit  
Family Violence Prevention Unit  
Sexual Offender Risk Management Program**

**STATISTICS**

- As part of the Keeping Kids Safe strategy, the Sexual Offender Risk Management Program is designed to ensure the safety of known victims of child sexual abuse and to prevent further abuse. The group program, which runs twice per week, is cognitive behavioral in design and focuses on high risk behaviors, cognitive distortions, victim empathy, and relapse prevention (risk management). Coupled with this is the offender's Management Team made up of formal and informal support people who monitor the offender's behavior in the community. These teams are established for the duration of the probation order. After completing the initial group program, an offender goes on to the Step-Out Group program. This program runs once every two weeks and focuses on high risk behavior, risk management, communication, courage to heal, and anger management. An additional component to the sexual offender program is the FAS/FAE and developmentally delayed component. Group and individual therapy and risk management teams are utilized for this client base. Groups are open ended and long term. There is an accumulated workload as offenders often receive two - three years probation. As shown below, the number of offenders in the program is relatively small; however, the services provided are intense and not limited to offenders. Services include support and education to victims, families, and to communities.

	2001-02 ESTIMATE	2000-01 FORECAST	% CHANGE	1999-00 ACTUAL
Men Assessed (#)	50	45	11%	45
Men Participating in Group (#)	40	35	14%	37
Men Participating in Risk Management Teams (#)	45	45	0%	45
Court or Parole Referrals (%)	98%	98%	n/a	98%
Friends/Family Members In Risk Management (#)	40	40	0%	45
Direct Service to Client (# of hours)	3,200	2,600	23%	2,820
Risk Management Teams/Workshops In Communities (#)	90	50	80%	65
Group Work (# of sessions)	120	100	20%	104
Parole Clients (#)	5	2	150%	5
Court Appearances (#)	400	300	33%	350
Collateral Contacts/Case Management (#)	1,000	1,000	0%	450
Other (staff meetings, supervision, committee)	350	320	9%	220



# JUSTICE

## COMMUNITY AND CORRECTIONAL SERVICES Victim Services and Family Violence Prevention Unit Victim Services

### STATISTICS

- In cooperation with the R.C.M.P., the program offers services to ensure victimized persons in the Yukon receive support, information, advocacy, and appropriate referral to specialized agencies in order to limit the effect of their crisis and return their life to a desired degree of stability.

	2001-02 ESTIMATE	2000-01 FORECAST	% CHANGE	1999-00 ACTUAL
<b>File Profile</b>				
Case Files Opened (#)	400	410	-2%	305
Files Carried Over (#)	170	180	-6%	157
Active Parole Files (#)	30	35	-14%	27
Short Service Contracts (#)	450	450	0%	411
Total Number of Clients Served (#)	1,050	1,075	-2%	900
<b>Client Profile</b>				
Total Number of Clients Served (#)	1,050	1,075	-2%	900
Female	85%	85%	n/a	80%
Male	15%	15%	n/a	20%
First Nations	60%	65%	n/a	62%
Non-First Nations	40%	35%	n/a	38%
<b>Case Profile</b>				
Homicides	5%	5%	n/a	4%
Assaults (All levels)	50%	50%	n/a	58%
Sexual Assaults	15%	17%	n/a	20%
Peace Bonds	5%	5%	n/a	10%
Property	3%	2%	n/a	2%
Other (death notifications, vehicle accidents, miscellaneous)	2%	1%	n/a	1%
Total Spousal Related	55%	60%	n/a	57%
<b>Community Outreach</b>				
Whitehorse Files (#)	400	400	0%	237
Watson Lake (Sub Office) (#)	0	0	0%	20
Dawson City (#)	0	0	0%	15
Other Yukon Community Files (#)	70	50	40%	22
Outside Yukon Files (#)	30	30	0%	11
<b>Victim Impact Statements (VIS)</b>				
VIS Files (#)	200	200	0%	197
VIS Pending/Offered (#)	100	96	4%	67
No VIS Participation ( #) *	50	30	67%	105
Not Applicable (#) **	100	110	-9%	84

\* Cases in which Impact Statement was declined by victim.

\*\* Cases which did not proceed into court or final judgement on accused was "Not Guilty".

# JUSTICE

## CRIME PREVENTION AND POLICING

### PROGRAM OBJECTIVE

- To promote public awareness and safety, promote respect for the law through effective policing arrangements and community justice initiatives, promote safer communities and improve quality of life in Yukon.

O&M EXPENDITURES (\$000'S)	2001-02 ESTIMATE	2000-01 FORECAST	% CHANGE	1999-00 ACTUAL
<b>Activities</b>				
Program Director	876	828	6%	478
Police Services	11,794	11,994	-2%	11,013
<b>Total Crime Prevention and Policing</b>	<b>12,670</b>	<b>12,822</b>	<b>-1%</b>	<b>11,491</b>
<b>Allotments</b>				
Personnel	348	296	18%	217
Other	12,029	12,233	-2%	11,076
Transfer Payments	293	293	0%	198
<b>Total Allotments</b>	<b>12,670</b>	<b>12,822</b>	<b>-1%</b>	<b>11,491</b>

## JUSTICE

### CRIME PREVENTION AND POLICING Police Services

#### STATISTICS

- The Royal Canadian Mounted Police (R.C.M.P.) in the Yukon ("M" Division) provides cost-shared territorial policing services to all areas and peoples of the Yukon under an agreement signed by the Solicitor General of Canada, the Commissioner of the Yukon and the Yukon Minister of Justice.
- Currently there are 163 Full Time Equivalent (FTE) employed in Yukon ("M" Division), consisting of 115 regular RCMP members and 18 civilian members, and 30 employees in the public sector. These totals include Division Headquarters staff located in Whitehorse who provide enforcement of federal statutes, executive orders and protective policing services, and Divisional administrative services.

	2000 FORECAST	1999 ACTUAL	1998 ACTUAL
<b>Criminal Code Offenders (#)</b>			
Crimes Against Persons	1,084	1,044	1,012
Crimes Against Property	2,604	2,446	2,363
Other Criminal Code Offences	4,283	3,538	3,169
	<u>7,971</u>	<u>7,028</u>	<u>6,544</u>

#### Impaired Driving (#)

- The following figures include driving while impaired, refusing breath/blood tests, refusing roadside screening, driving with more than 80 mgs. of alcohol in blood, impaired driving causing bodily harm, and impaired driving causing death.

Impaired Driving *	<u>653</u>	<u>460</u>	<u>163 *</u>
--------------------	------------	------------	--------------

\* The 1998 statistics appear to be an anomaly; previous years' totals were in the 425 to 475 range.

# JUSTICE

## HUMAN RIGHTS

### PROGRAM OBJECTIVE

- To provide funds for the operation of the Human Rights Commission and the Panel of Adjudicators as provided for in the Human Rights Act.

O&M EXPENDITURES (\$000'S)	2001-02 ESTIMATE	2000-01 FORECAST	% CHANGE	1999-00 ACTUAL
<b>Activities</b>				
Human Rights Commission Grant	254	254	0%	391
Human Rights Adjudication Board	9	9	0%	67
<b>Total Human Rights</b>	<b>263</b>	<b>263</b>	<b>0%</b>	<b>458</b>
<b>Allotments</b>				
Personnel	0	0	0%	0
Other	9	9	0%	67
Transfer Payments	254	254	0%	391
<b>Total Allotments</b>	<b>263</b>	<b>263</b>	<b>0%</b>	<b>458</b>

## JUSTICE

<b>RECOVERIES AND REVENUE (\$000'S)</b>	<b>2001-02 ESTIMATE</b>	<b>2000-01 FORECAST</b>	<b>% CHANGE</b>	<b>1999-00 ACTUAL</b>
<b>RECOVERIES</b>				
<b>Management Services</b>				
Worker Advocate	305	281	9%	202
<b>Court Services</b>				
Child Support Guidelines	98	257	-62%	78
<b>Legal Services</b>				
Legal Aid	435	435	0%	435
Native Courtworkers Program	171	171	0%	171
Yukon Public Legal Education Association (YPLEA)	70	70	0%	70
Prior Years' Recoveries	0	0	0%	21
<b>Consumer and Commercial Services</b>				
Yukon Utilities Board Hearings	100	100	0%	18
<b>Community and Correctional Services</b>				
Institutional Facilities	55	55	0%	38
Parole Supervision	41	41	0%	0
<b>TOTAL RECOVERIES</b>	<b>1,275</b>	<b>1,410</b>	<b>-10%</b>	<b>1,033</b>
<b>REVENUE</b>				
<b>Court Services</b>				
Fines - Territorial Court	370	474	-22%	429
Sheriff's Office	50	50	0%	32
<b>Consumer and Commercial Services</b>				
Professional/Consumer Licensing	161	161	0%	167
Business/Corporate Licensing	725	501	45%	719
Public Administrator Fees	2	10	-80%	2
Land Titles Fees	100	212	-53%	109
<b>TOTAL REVENUE</b>	<b>1,408</b>	<b>1,408</b>	<b>0%</b>	<b>1,458</b>

## JUSTICE

<b>TRANSFER PAYMENTS (\$000'S)</b>	<b>2001-02 ESTIMATE</b>	<b>2000-01 FORECAST</b>	<b>% CHANGE</b>	<b>1999-00 ACTUAL</b>
<b>GRANTS</b>				
<b>Community and Correctional Services</b>				
Institutional Facilities Inmate Allowance	68	84	-19%	50
<b>Human Rights</b>				
Human Rights Commission *	254	254	0%	391
<b>Total Grants</b>	<b>322</b>	<b>338</b>	<b>-5%</b>	<b>441</b>
* Paid under Authority of Legislation				
<b>CONTRIBUTIONS</b>				
<b>Management Services</b>				
Prior Years' Contributions	0	0	0%	150
<b>Legal Services</b>				
Legal Aid Program	1,356	1,356	0%	1,255
Native Courtworkers Program	344	344	0%	339
Yukon Public Legal Education Association (YPLEA)	85	85	0%	85
<b>Consumer and Commercial Services</b>				
Yukon Utilities Board	100	100	0%	0
Prior Years Contributions	0	329	-100%	329
<b>Community and Correctional Services</b>				
Community Residential Centre (Salvation Army)	226	126	79%	136
Teslin First Nation	200	29	590%	29
Prior Years' Contributions	0	41	-100%	0
<b>Crime Prevention and Policing</b>				
Community Justice Projects	293	293	0%	198
<b>Total Contributions</b>	<b>2,604</b>	<b>2,703</b>	<b>-4%</b>	<b>2,521</b>
<b>TOTAL TRANSFER PAYMENTS</b>	<b>2,926</b>	<b>3,041</b>	<b>-4%</b>	<b>2,962</b>