

ELECTIONS OFFICE



**VOTE 24
ELECTIONS OFFICE**

SPEAKER OF THE ASSEMBLY

Hon. T. Staffen

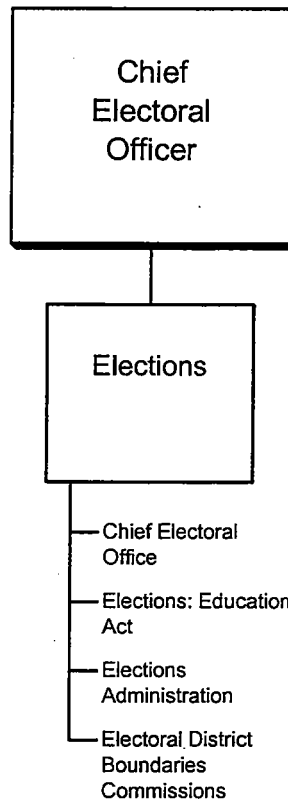
CHIEF ELECTORAL OFFICER

P. Michael

- To manage and conduct elections of members of the Legislative Assembly and school-governing groups.
- To provide administrative support for electoral district boundaries commissions.

ELECTIONS OFFICE

RELATIONSHIP BETWEEN ORGANIZATION AND PROGRAMS

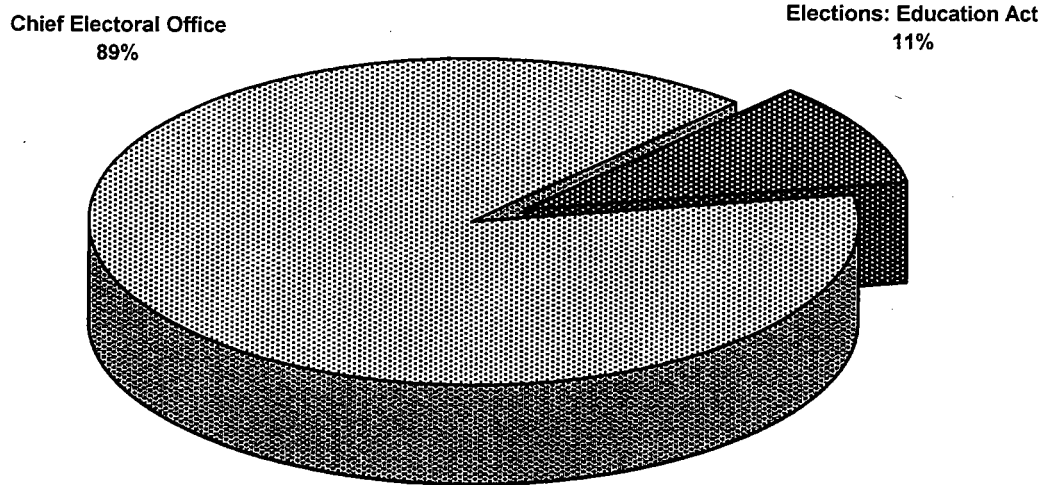


**VOTE 24
ELECTIONS OFFICE**

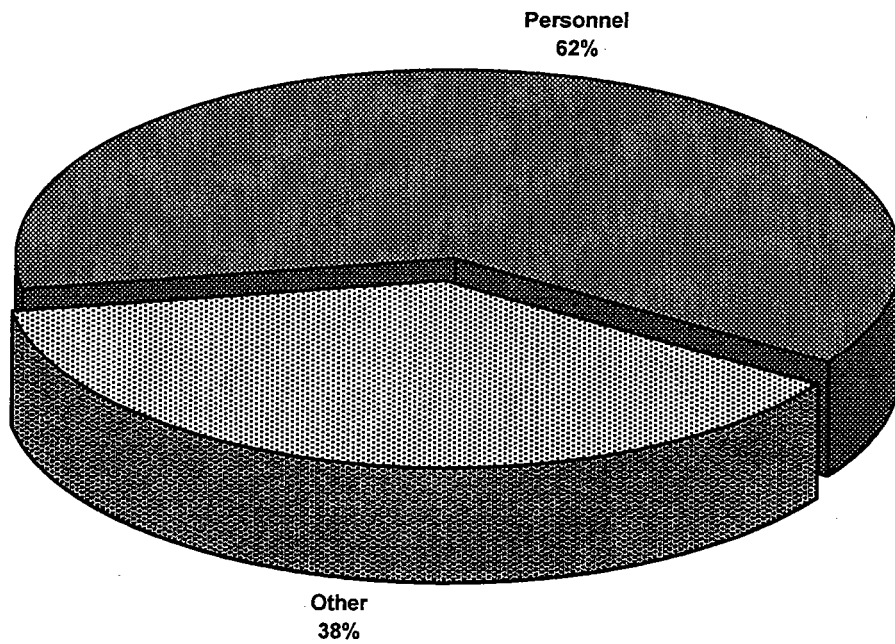
FINANCIAL SUMMARY (\$000'S)	2003-04 ESTIMATE	2002-03 FORECAST	% CHANGE	2001-02 ACTUAL
Operation and Maintenance Expenditures				
Elections	137	661	-79%	307
Total Operation and Maintenance Vote 24	137	661	-79%	307
Operation and Maintenance Recoveries				
	0	0	0%	0
Revenue				
	0	0	0%	0
Allotments				
Personnel	85	111	-23%	78
Other	52	550	-91%	229
Transfer Payments	0	0	0%	0
Total Allotments	137	661	-79%	307

**VOTE 24
ELECTIONS OFFICE**

**2003-04 Estimate
Distribution of O&M Expenditures by Activity**



**2003-04 Estimate
Distribution of O&M Expenditures by Allotment**



ELECTIONS OFFICE

ELECTIONS

PROGRAM DESCRIPTION

- Maintain the elections administrative structure in a state of readiness for the call of an election.
- Conduct by-elections and general elections of members to the Yukon Legislative Assembly.
- Report to the Yukon Legislative Assembly on election-related matters.
- Conduct elections of members of School Councils and trustees of School Boards pursuant to the Education Act.
- Provide consultative services and resources regarding election administration to other agencies.
- Provide secretariat services to electoral district boundaries commissions.

O&M EXPENDITURES (\$000'S)	2003-04 ESTIMATE	2002-03 FORECAST	% CHANGE	2001-02 ACTUAL
Activities				
Chief Electoral Office	123	140	-12%	91
Elections: Education Act	14	57	-75%	7
Elections Administration	one dollar	461	-100%	0
Electoral District Boundaries Commissions	0	3	-100%	209
Total Elections	137	661	-79%	307
Allotments				
Personnel	85	111	-23%	78
Other	52	550	-91%	229
Transfer Payments	0	0	0%	0
Total Allotments	137	661	-79%	307