

JUSTICE



**VOTE 08
DEPARTMENT OF JUSTICE**

MINISTER

Hon. E. Taylor

DEPUTY MINISTER

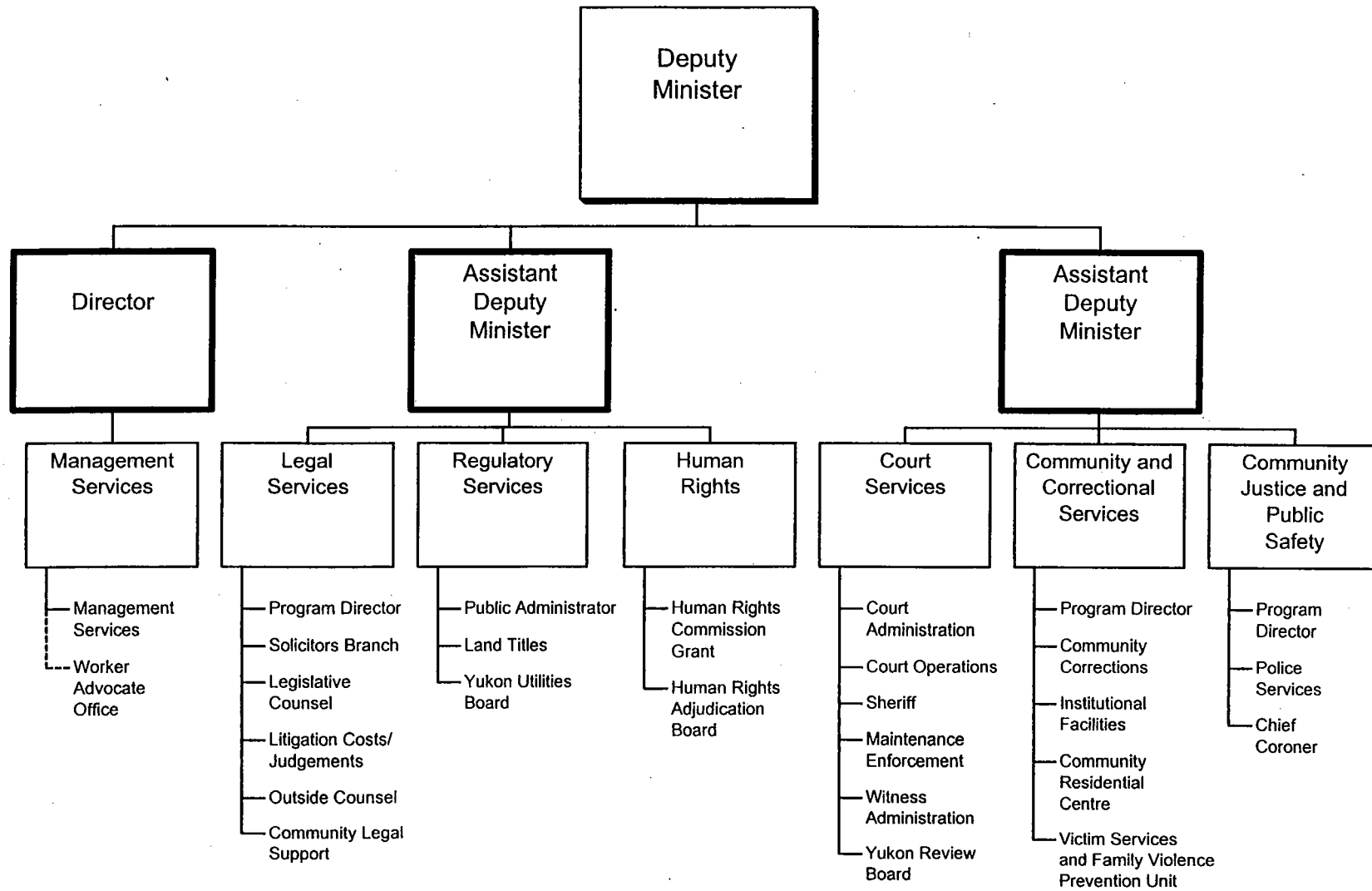
W. Craik

DEPARTMENTAL OBJECTIVE

- The Yukon Department of Justice operates to:
 - enhance public confidence in, and respect for, the law and society;
 - promote an open and accessible system of justice that provides fair and equal services to all Yukon citizens;
 - ensure that the administration of justice operates for the benefit of all persons in the Yukon;
 - work toward an effective and responsive correctional system to manage offenders in ways that promote rehabilitation and ensure public safety;
 - ensure that the Government of the Yukon receives high quality and cost effective legal services;
 - promote effective policing, crime prevention and community justice initiatives in our communities; and
 - encourage respect for individual, collective and human rights.

DEPARTMENT OF JUSTICE

RELATIONSHIP BETWEEN ORGANIZATION AND PROGRAMS



**VOTE 08
DEPARTMENT OF JUSTICE**

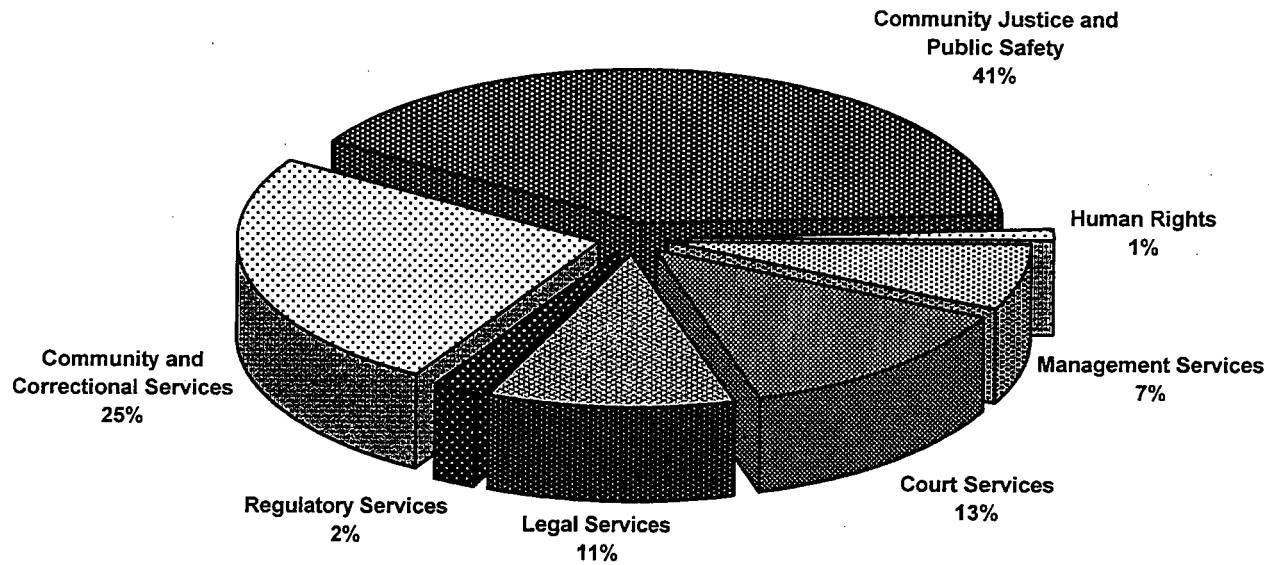
FINANCIAL SUMMARY (\$000'S)	2003-04 ESTIMATE	2002-03 FORECAST	% CHANGE	2001-02 ACTUAL
Operation and Maintenance Expenditures				
Management Services	2,346	2,476	-5%	2,118
Court Services	4,534	4,540	0%	6,274
Legal Services	3,854	4,183	-8%	3,980
Regulatory Services	667	774	-14%	629
Community and Correctional Services	8,556	8,842	-3%	8,804
Community Justice and Public Safety	13,721	13,703	0%	13,005
Human Rights	411	413	0%	511
Total Operation and Maintenance Vote 08	34,089	34,931	-2%	35,321
Operation and Maintenance Recoveries				
	1,506	1,533	-2%	915
Revenue				
	439	429	2%	414
Allotments				
Personnel	15,145	15,412	-2%	16,011
Other	15,716	16,043	-2%	16,308
Transfer Payments	3,228	3,476	-7%	3,002
Total Allotments	34,089	34,931	-2%	35,321

Note:

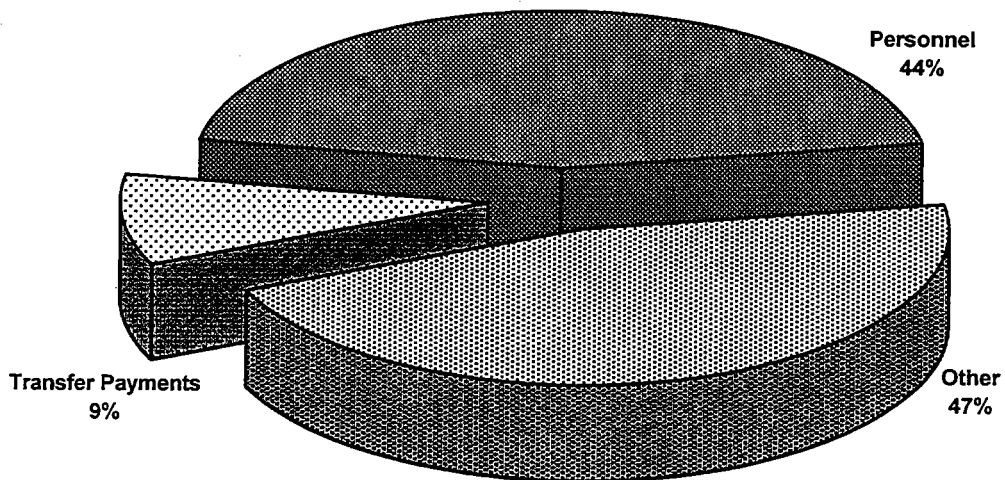
Restated 2001-02 Actual to be consistent with the 2003-04 Estimate presentation.

**VOTE 08
DEPARTMENT OF JUSTICE**

**2003-04 Estimate
Distribution of O&M Expenditures by Program**



**2003-04 Estimate
Distribution of O&M Expenditures by Allotment**



JUSTICE

MANAGEMENT SERVICES

PROGRAM OBJECTIVES

- To assist and support appropriate and consistent departmental policy and program delivery through the provision of planning; analysis; information and communications; and financial, human, and physical resource management to program branches.
- To maintain and support a worker advocate program that assists injured workers.

O&M EXPENDITURES (\$000'S)	2003-04 ESTIMATE	2002-03 FORECAST	% CHANGE	2001-02 ACTUAL
Activity				
Management Services	2,346	2,476	-5%	2,118
Total Management Services	2,346	2,476	-5%	2,118
Allotments				
Personnel	1,951	1,983	-2%	1,679
Other	395	493	-20%	439
Transfer Payments	0	0	0%	0
Total Allotments	2,346	2,476	-5%	2,118

JUSTICE

COURT SERVICES

PROGRAM OBJECTIVES

- To enhance and facilitate the integrity and efficient operation of the court system through the provision of administrative, enforcement and support services to the courts, the judiciary, and other participants in judicial processes.
- To enforce court orders to ensure that child maintenance payments are received and support payments are issued.
- To enforce court orders; provide jury management, service of civil and criminal documents; and security for courts, the public, judiciary and court services staff.

O&M EXPENDITURES (\$000'S)	2003-04 ESTIMATE	2002-03 FORECAST	% CHANGE	2001-02 ACTUAL
Activities				
Court Administration	549	645	-15%	607
Court Operations	3,241	3,151	3%	4,945
Sheriff	274	280	-2%	230
Maintenance Enforcement	319	277	15%	355
Witness Administration	114	145	-21%	122
Yukon Review Board	37	42	-12%	15
Total Court Services	4,534	4,540	0%	6,274
Allotments				
Personnel	3,562	3,526	1%	4,773
Other	972	1,014	-4%	1,501
Transfer Payments	0	0	0%	0
Total Allotments	4,534	4,540	0%	6,274

JUSTICE

COURT SERVICES

STATISTICS

	2003-04 ESTIMATE	2002-03 FORECAST	% CHANGE	2001-02 ACTUAL
Supreme Court				
Civil Files Opened (#)	550	500	10%	506
Civil Documents Filed (#)	7,400	7,400	0%	7,213
Summary Conviction Appeals (#) *	25	25	0%	5
Court of Appeal				
Files Opened (#)	25	20	25%	24
Appeal Documents Filed (#)	350	350	0%	318
Federal Court of Canada Files				
Files Opened (#)	3	3	0%	7
Federal Documents Filed (#)	44	34	29%	29
Territorial Court				
Civil Files Opened (#)	150	150	0%	145
Civil Documents Filed (#)	1,400	1,400	0%	1,230
Adult Charges Laid (#)	3,600	3,600	0%	3,132
Young Offender Charges Laid (#)	600	600	0%	456
S.C.O.T.** Tickets (Adult and Youth)	3,500	3,500	0%	2,382
Territorial Applications	100	90	11%	70
Small Claims Court				
Files Opened (#)	200	200	0%	177
Documents Filed (#)	2,100	2,100	0%	1,891
Witness Administration				
Witnesses (#)	900	900	0%	591
Maintenance Enforcement Program				
Files Opened (#)	75	70	7%	66
Files Active (#)	605	600	1%	596
Sheriff				
Documents Served (#)	500	500	0%	359
Seizure of Goods and Chattels (#)	100	100	0%	77
Judge and Jury Trials (#)	15	15	0%	9
Jurors Served (#)	2,000	2,000	0%	1,800

* Included in total civil files opened.

** Summary Conviction Ordinance Tickets.

JUSTICE

LEGAL SERVICES

PROGRAM OBJECTIVES

- To ensure that the Minister of Justice and Cabinet receive timely and effective legal advice.
- To ensure that a comprehensive range of legal services is provided to government departments including representation before all courts and tribunals in civil and criminal matters, legislative drafting in both official languages and advice on a wide variety of matters.
- To provide community legal support through funding to the Yukon Legal Services Society, the Aboriginal Courtworker Program, and the Yukon Public Legal Education Association.

O&M EXPENDITURES (\$000'S)	2003-04 ESTIMATE	2002-03 FORECAST	% CHANGE	2001-02 ACTUAL
Activities				
Program Director	251	261	-4%	249
Solicitors Branch	1,468	1,452	1%	1,052
Legislative Counsel	379	378	0%	713
Litigation Costs/Judgements	6	10	-40%	8
Outside Counsel	100	200	-50%	226
Community Legal Support	1,650	1,882	-12%	1,732
Total Legal Services	3,854	4,183	-8%	3,980
Allotments				
Personnel	1,943	1,926	1%	1,718
Other	261	375	-30%	528
Transfer Payments	1,650	1,882	-12%	1,734
Total Allotments	3,854	4,183	-8%	3,980

JUSTICE

REGULATORY SERVICES

PROGRAM OBJECTIVES

- To administer estates of Yukoners who die where a legal representative has not assumed responsibility; to act as trustee of the estates of minor children, mentally incompetent persons, and missing persons; and to protect the rights and interests of minor children.
- To administer a land titles system within the Yukon.
- To provide funds for the operation of Public Utilities Board as provided for in the Public Utilities Act.

O&M EXPENDITURES (\$000'S)	2003-04 ESTIMATE	2002-03 FORECAST	% CHANGE	2001-02 ACTUAL
Activities				
Public Administrator	168	175	-4%	180
Land Titles	319	350	-9%	288
Yukon Utilities Board	180	190	-5%	45
Prior Years' Activities	0	59	-100%	116
Total Regulatory Services	667	774	-14%	629
Allotments				
Personnel	439	518	-15%	526
Other	48	66	-27%	103
Transfer Payments	180	190	-5%	0
Total Allotments	667	774	-14%	629

JUSTICE

REGULATORY SERVICES Public Administrator

STATISTICS

- To protect the assets of estates on behalf of beneficiaries, minors, and mentally incapacitated persons.
- To protect the personal and property interests of minor children.

	2003-04 ESTIMATE	2002-03 FORECAST	% CHANGE	2001-02 ACTUAL
Total Deaths (#) *	165	160	3%	164
Missing Persons (#)	2	0	100%	0
Minor Children (#)	20	17	18%	17
Estate Assists (#) *	135	133	2%	130
Estate Files Opened in Period (#)	30	27	11%	34
Total Estate Files Open (#)**	150	140	7%	209
Official Guardian Files (#)	60	60	0%	27
Mental Health Files (#)	2	2	0%	1
Public Administrator Estate Fees (\$)	2,000	2,000	0%	2,470

Funds in Trust at March 31, 2002

Savings (\$)	602,088
Guaranteed Investment Certificates (\$)	175,272
Canada Savings Bonds (\$)	nil
Shares Held in Trust (# - no value attached)	2,000

* Includes residents of Yukon who passed away out of the territory.

** Decrease in 2002-03 reflects closed files sent to dormant records.

JUSTICE

REGULATORY SERVICES Land Titles

STATISTICS

- To provide a guaranteed, accurate title of land and any interests registered against it under the Torrens System of Land.
- To ensure the integrity of the Titles, all documents and survey plans are examined and registered in the Land Titles Office.

	2003-04 ESTIMATE	2002-03 FORECAST	% CHANGE	2001-02 ACTUAL
Land Titles Issued (#)	1,400	1,300	8%	1,177
Condominium Titles Issued (#)	100	85	18%	71
Yukon Road Titles (#)	30	25	20%	22
Survey Plans Registered (#) Increase for 2003/04 due to new survey, resurvey and land claims plans registered.	400	300	33%	323
Mortgages Registered (#) *	1,500	1,300	15%	1,251
Caveats Registered (#) **	200	200	0%	200
Misc. Documents Registered (# i.e. discharges)	1,670	1,790	-7%	1,812
Total Documents Registered (#)	5,300	5,000	6%	4,856
Newly Created Parcel Files (#) Increase reflects number of new parcels on new survey plans registered.	600	500	20%	458
Certificates of Search (#)	8,500	8,500	0%	8,328
General Registry Certificates (#) ***	2,000	1,800	11%	1,467

* Includes Certificates of Charge.

** Includes Notices mailed.

*** General Registry Certificates includes visuals. Increase from 2001/2002 Actual reflects an increase in requests by clients.

JUSTICE

COMMUNITY AND CORRECTIONAL SERVICES

PROGRAM OBJECTIVES

- To contribute to the protection of society and the health of communities and individuals by providing community and institutional based opportunities for healing and reparation.
- To provide programs and services for offenders, that have as their primary goal the safe integration of offenders into communities as law-abiding citizens.
- To provide programs and services for preventing and responding to family violence and supporting victims.

O&M EXPENDITURES (\$000'S)	2003-04 ESTIMATE	2002-03 FORECAST	% CHANGE	2001-02 ACTUAL
Activities				
Program Director	276	365	-24%	257
Community Corrections	987	988	0%	1,062
Institutional Facilities	5,762	5,984	-4%	6,134
Community Residential Centre	316	316	0%	277
Victim Services and Family Violence Prevention Unit	1,215	1,189	2%	1,074
Total Community and Correctional Services	8,556	8,842	-3%	8,804
Allotments				
Personnel	6,592	6,844	-4%	6,720
Other	1,398	1,432	-2%	1,599
Transfer Payments	566	566	0%	485
Total Allotments	8,556	8,842	-3%	8,804

JUSTICE

COMMUNITY AND CORRECTIONAL SERVICES Community Corrections

STATISTICS

- Community Corrections administers community based corrections programs. These programs enable the courts to consider a range of alternatives to imprisonment in the sentencing process. They are designed primarily for low risk offenders who present minimal danger to the public at the time of sentencing, or for offenders for whom it has been determined risk can be managed in a community setting.

	2003-04 ESTIMATE	2002-03 FORECAST	% CHANGE	2001-02 ACTUAL
Probation				
Average Offender Count (#) *	550	525	5%	488
New Admissions (#)	375	350	7%	338
Pre-Sentence Reports (#) **	360	300	20%	275
Fine Option Program (#)	25	25	0%	20
Conditional Sentences (#)	110	110	0%	104

* Based on average monthly counts.

** Includes both Pre-Sentence and Bail Supervision Reports.

JUSTICE

COMMUNITY AND CORRECTIONAL SERVICES Institutional Facilities Whitehorse Correctional Centre

STATISTICS

- The Whitehorse Correctional Centre is a medium security correctional facility for adult men and women. The centre accommodates inmates serving sentences of less than two years.

	2003-04 ESTIMATE	2002-03 FORECAST	% CHANGE	2001-02 ACTUAL
Yukon Adults Average Daily Inmate Cost				
Daily Costs (\$) *	247	253	-2%	256
Total Days Stay (#)	22,500	22,900	-2%	22,684
Average Offenders on Register and Actual, by Inmate Status				
On Register (#)	65	63	3%	62
Sentenced (#)	35	35	0%	44
Remand (#)	30	28	7%	18
Total Admissions				
Sentenced Admissions (#)	300	300	0%	280
Remand Admissions (#)	320	320	0%	323

- * Average daily inmate cost is based on overall budget for the Whitehorse Correctional Centre as reported to Canadian Centre for Justice Statistics (CCJS).

JUSTICE

COMMUNITY AND CORRECTIONAL SERVICES Victim Services and Family Violence Prevention Unit Spousal Abuse Program

STATISTICS

- Individual and group counselling and support services are provided for perpetrators of spousal assault. Men and women undergo an extensive assessment process, and are either accepted for group, referred to another agency, referred back to the original referral sources or, occasionally, seen individually for short-term counselling or therapy.

	2003-04 ESTIMATE	2002-03 FORECAST	% CHANGE	2001-02 ACTUAL
Men Assessed or Partially Assessed (#)	186	186	0%	169
Women Assessed or Partially Assessed (#)	30	30	0%	6
Direct Service Hours (#)	12,300	11,979	3%	8,888
Individual Counselling	2,300	2,251	2%	1,847
Group Counselling	10,000	9,728	3%	7,041
Community Assessments (#)	90	90	0%	72
Men Participating in Groups (#)	150	142	6%	99
Women Participating in Groups (#)	27	27	0%	4
Court or Parole Referrals (#)	162	162	0%	143
Partners Assessed (#)	100	95	5%	93
Partners Contacted (or discussed with Victim Services) (#)	180	180	0%	160
Friends/Family Members Receiving Counselling Support (#)	4	4	0%	2
Appointments (#)	1,200	1,190	1%	971
Training to Other Service Providers - in hours (#)	380	380	0%	356

2001-02 Assessments by Community

Atlin, B. C.	4
Beaver Creek	0
Burwash	1
Carcross	6
Carmacks	2
Dawson City	7
Haines Junction	2
Faro	0
Mayo	6
Old Crow	6
Pelly/Stewart	3
Ross River	3
Teslin	15
Watson Lake	17
Total	<u>72</u>

JUSTICE

COMMUNITY AND CORRECTIONAL SERVICES Victim Services and Family Violence Prevention Unit Family Violence Prevention Unit Victims Program

STATISTICS

- Programs provided for victims include: the Support Group for Women in abusive relationships, Drop-In Support Group, individual counselling for victims of spousal abuse, advocacy and support services, and case management with the Spousal Abuse Program.

	2003-04 ESTIMATE	2002-03 FORECAST	%	2001-02 ACTUAL
Total Women				
Clients (#)	150	150	0%	63
Status				
Spousal Assault (#)	150	150	0%	63
Service				
Individual Counselling (#)	130	100	30%	48
Court Support (#)*	2	2	0%	8
Intake Only (#)	10	10	0%	4
Pre-Group (#)	75	60	25%	10
Support Group (#)	80	100	-20%	30
Follow-Up Group (#)	50	50	0%	0
Direct Service Client Hours (#)**	2,300	2,200	5%	1,120
Community				
Whitehorse (#)	145	120	21%	58
Other Communities (#)	5	30	-83%	5
Workshop/Presentations (#) (Teen Parent Centre, College, Communities)	12	12	0%	7

* Court support is not a normal part of these counsellors' duties. Only in highly unusual cases would they attend court with a client. Court support is normally provided by a victim service worker.

** Some clients receive both individual and group counselling.

JUSTICE

COMMUNITY AND CORRECTIONAL SERVICES Victim Services and Family Violence Prevention Unit Family Violence Prevention Unit Sexual Offender Risk Management Program

STATISTICS

- The Sexual Offender Risk Management Program (SORMP) is a monitoring and treatment program for sexual offenders. The SORMP provides assessment, individual and group treatment as well as monitoring for sexual offenders. The group treatment program is every week and is cognitive behavioural in design. Offenders address high risk behaviours, cognitive distortions, victim empathy, and relapse prevention (risk management). The group is open-ended and long-term.
- Coupled with treatment is the offender's Risk Management Team made up of formal and informal support resources who assist in monitoring, and who help the offender manage his behaviour in the community. These teams are established for the duration of the Probation Order. An additional program to the mainstream sexual offender program is the FAS/FAE and developmentally delayed component. Group and individual therapy and risk management teams are utilized for this client base. Groups are open ended and long term. There is an accumulated caseload as offenders often receive two - three years probation. Additional services include support and education to victims, families and communities.

	2003-04 ESTIMATE	2002-03 FORECAST	% CHANGE	2001-02 ACTUAL
Men Assessed (#)	30	27	11%	33
Men Participating in Group (#)	20	20	0%	20
Men Participating in Risk Management Teams (#)	40	27	48%	45
Court or Parole Referrals (%)	98%	98%	n/a	98%
Friends/Family Members In Risk Management (#)	28	21	33%	45
Direct Service to Client (# of hours)	2,800	2,600	8%	2,820
Risk Management Teams/Workshops In Communities (#)	30	20	50%	26
Group Work (# of sessions)	99	88	13%	88
Parole Clients (#)	4	4	0%	5
Court Appearances (#)	325	300	8%	350
Collateral Contacts/Case Management (#)	1,000	1,000	0%	450
Other (staff meetings, supervision, committee) (# of hours)	300	320	-6%	220

JUSTICE

COMMUNITY AND CORRECTIONAL SERVICES Victim Services and Family Violence Prevention Unit Victim Services

STATISTICS

- In cooperation with the R.C.M.P., the program offers services to ensure victimized persons in the Yukon receive support, information, advocacy, and appropriate referral to specialized agencies in order to limit the effect of their crisis and return their life to a desired degree of stability.

	2003-04 ESTIMATE	2002-03 FORECAST	% CHANGE	2001-02 ACTUAL
File Profile (#)				
Case Files Opened	350	400	-13%	392
Files Carried Over	90	90	0%	161
Active Parole Files	10	20	-50%	20
Short Service Contracts	150	150	0%	286
Total Number of Files Opened	600	660	-9%	859
Client Profile (#)				
Total Number of Clients Served	800	900	-11%	1,150
Female	80%	75%	n/a	88%
Male	20%	25%	n/a	12%
First Nations	50%	50%	n/a	62%
Non-First Nations	50%	50%	n/a	38%
Case Profile (#)				
Homicides	1%	2%	n/a	0.02%
Assaults (All levels)	65%	60%	n/a	47%
Sexual Assaults	20%	20%	n/a	18%
Peace Bonds	3%	5%	n/a	6%
Property	3%	3%	n/a	5%
Other (death notifications, vehicle accidents, miscellaneous)	8%	10%	n/a	27%
Total Spousal Related	75%	70%	n/a	69%
Community Outreach (#)				
Whitehorse Files	440	450	-2%	582
Watson Lake (Sub Office)	30	40	-25%	35
Dawson City	70	75	-7%	65
Other Yukon Community Files	50	80	-38%	152
Outside Yukon Files	10	15	-33%	25

A number of variables have affected the numbers this year: The Crown now has 3 victim assistance workers to take on most property offences and to share the load in some other communities; we are trying to encourage a healthy work environment by supporting staff in maintaining manageable caseloads and our caseloads now tend to be more intensive and long term cases due to the impacts of this type of crime.

JUSTICE

COMMUNITY JUSTICE AND PUBLIC SAFETY

PROGRAM OBJECTIVES

- To promote public awareness and safety, promote respect for the law through effective policing arrangements and community justice initiatives, promote safer communities, and improve quality of life in Yukon.
- To investigate all sudden and unnatural deaths in order to clarify the facts, focus attention on preventable deaths and protect public health and safety.

O&M EXPENDITURES (\$000'S)	2003-04 ESTIMATE	2002-03 FORECAST	% CHANGE	2001-02 ACTUAL
Activities				
Program Director	1,078	1,045	3%	1,057
Police Services	12,436	12,436	0%	11,710
Chief Coroner	207	222	-7%	238
Total Community Justice and Public Safety	13,721	13,703	0%	13,005
Allotments				
Personnel	658	615	7%	595
Other	12,602	12,621	0%	12,107
Transfer Payments	461	467	-1%	303
Total Allotments	13,721	13,703	0%	13,005

JUSTICE

**COMMUNITY JUSTICE AND PUBLIC SAFETY
Police Services**

STATISTICS

- The Royal Canadian Mounted Police (R.C.M.P.) in the Yukon ("M" Division) provides cost-shared territorial policing services to all areas and peoples of the Yukon under an agreement signed by the Solicitor General of Canada, the Commissioner of the Yukon and the Yukon Minister of Justice.
- Currently there are 171 Full Time Equivalent (FTEs) employed in Yukon ("M" Division), consisting of 118 regular RCMP members, 3 special constables, 20 civilian members, and 36 employees in the public sector (equal to 30 FTEs). These totals include Division Headquarters staff located in Whitehorse who provide enforcement of federal statutes, executive orders and protective policing services, and Divisional administrative services.

	2002 FORECAST	2001 ACTUAL	2000 ACTUAL
Criminal Code Offenders (#) *			
Crimes Against Persons	1,100	1,121	1,020
Crimes Against Property	2,150	2,157	2,502
Other Criminal Code Offences	4,200	4,153	3,696
	<u>7,450</u>	<u>7,431</u>	<u>7,218</u>

Impaired Driving - Convictions (#) *

- The following figures include driving while impaired, refusing breath/blood tests, refusing roadside screening, driving with more than 80 mgs. of alcohol in blood, impaired driving causing bodily harm, and impaired driving causing death.

Impaired Driving	<u>140</u>	<u>148</u>	<u>192</u>
------------------	------------	------------	------------

* This is the first year of reporting statistics as reported by the Canadian Centre for Justice Statistics. In previous years statistics were reported by number of charges.

JUSTICE

COMMUNITY JUSTICE AND PUBLIC SAFETY Chief Coroner

STATISTICS

- To investigate, for the public, unexpected and sudden deaths, and to recommend changes to prevent similar deaths.
- To focus attention on preventable deaths and the public's health and safety.

	2003-04 ESTIMATE	2002-03 FORECAST	% CHANGE	2001-02 ACTUAL
Case Work (#)				
Coroner's Cases	50	52	-4%	51
Autopsies	33	34	-3%	34
Inquests	0	2	-100%	0
Judgements of Inquiry	6	6	0%	4
Manner of Death (#)				
Natural	26	27	-4%	25
Suicide	6	5	20%	7
Homicide	1	1	0%	1
Accident	17	19	-11%	18
Undetermined	0	0	0%	0
Total Coroners' Cases	50	52	-4%	51

JUSTICE

HUMAN RIGHTS

PROGRAM OBJECTIVE

- To provide funds for the operation of the Human Rights Commission and the Panel of Adjudicators as provided for in the Human Rights Act.

O&M EXPENDITURES (\$000'S)	2003-04 ESTIMATE	2002-03 FORECAST	% CHANGE	2001-02 ACTUAL
Activities				
Human Rights Commission Grant	371	371	0%	480
Human Rights Adjudication Board	40	42	-5%	31
Total Human Rights	411	413	0%	511
Allotments				
Personnel	0	0	0%	0
Other	40	42	-5%	31
Transfer Payments	371	371	0%	480
Total Allotments	411	413	0%	511

JUSTICE

RECOVERIES AND REVENUE (\$000'S)	2003-04 ESTIMATE	2002-03 FORECAST	% CHANGE	2001-02 ACTUAL
RECOVERIES				
Management Services				
Worker Advocate	376	345	9%	310
Court Services				
Child Support Guidelines	98	97	1%	102
Witness Program - Videoconferencing	8	29	-72%	0
Legal Services				
Legal Aid	528	528	0%	152
Aboriginal Courtworker Program	146	176	-17%	146
Yukon Public Legal Education Association (YPLEA)	70	70	0%	70
Administration of Justice Agreement	20	20	0%	20
Regulatory Services				
Public Utilities Board Hearings	100	100	0%	0
Community and Correctional Services				
Institutional Facilities	10	10	0%	(23)
Parole Supervision	52	52	0%	52
Family Violence Prevention Unit and Victim Services				
- Justice Canada: Outreach Workers	50	50	0%	50
- Justice Canada: Victim Coordinator	37	37	0%	29
- University of Calgary: Research Worker	11	19	-42%	7
TOTAL RECOVERIES	1,506	1,533	-2%	915

REVENUE

Court Services				
Fines - Territorial Court	275	265	4%	260
Sheriff's Office	20	20	0%	22
Regulatory Services				
Public Administrator Fees	2	2	0%	3
Land Titles Fees	142	142	0%	129
TOTAL REVENUE	439	429	2%	414

JUSTICE

TRANSFER PAYMENTS (\$000'S)	2003-04 ESTIMATE	2002-03 FORECAST	% CHANGE	2001-02 ACTUAL
GRANTS				
Community and Correctional Services				
Institutional Facilities Inmate Allowance	50	50	0%	46
Human Rights				
Human Rights Commission *	371	371	0%	480
Total Grants	421	421	0%	526
* Paid under Authority of Legislation				
CONTRIBUTIONS				
Legal Services				
Yukon Legal Services Society (Legal Aid)	1,256	1,356	-7%	1,356
Aboriginal Courtworker Program	309	374	-17%	293
Yukon Public Legal Education Association (YPLEA)	85	85	0%	85
Prior Years' Contributions	0	67	-100%	0
Regulatory Services				
Yukon Utilities Board	180	190	-5%	0
Community and Correctional Services				
Teslin Tlingit Council	200	200	0%	279
Community Residential Centre (Salvation Army)	316	316	0%	160
Community Justice and Public Safety				
Youth Leadership Program	168	174	-3%	0
Community Justice Projects	293	293	0%	303
Total Contributions	2,807	3,055	-8%	2,476
TOTAL TRANSFER PAYMENTS	3,228	3,476	-7%	3,002