

ELECTIONS OFFICE



**VOTE 24
ELECTIONS OFFICE**

SPEAKER OF THE ASSEMBLY

Hon. T. Staffen

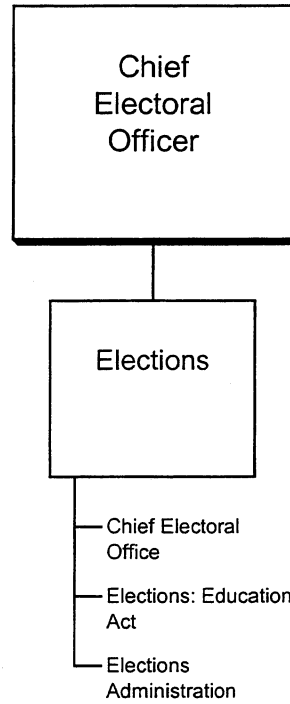
CHIEF ELECTORAL OFFICER

P. Michael

- To manage and conduct elections of members of the Yukon Legislative Assembly and school-governing groups.
- To provide administrative support for electoral district boundaries commissions.

ELECTIONS OFFICE

RELATIONSHIP BETWEEN ORGANIZATION AND PROGRAMS



**VOTE 24
ELECTIONS OFFICE**

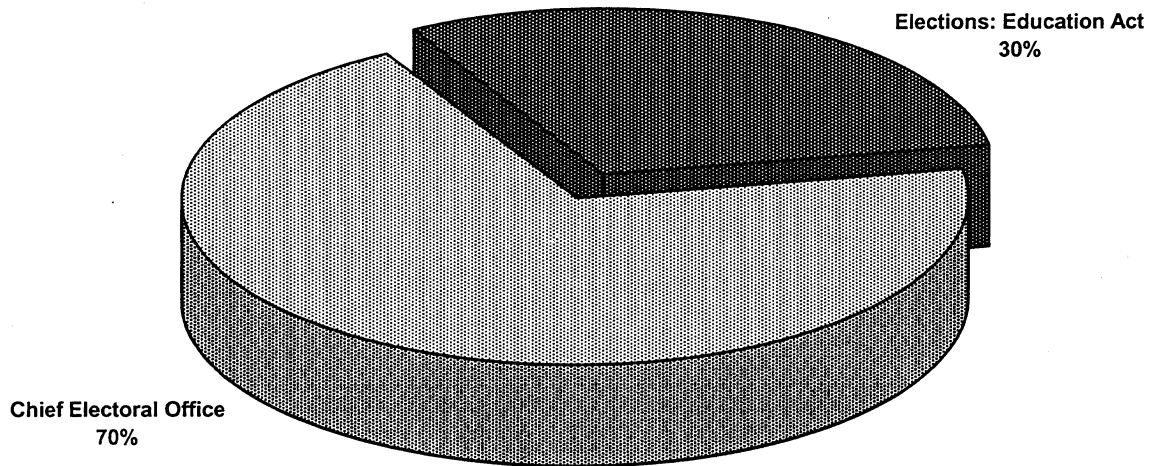
FINANCIAL SUMMARY (\$000'S)	2004-05 ESTIMATE	2003-04 FORECAST	% CHANGE	2002-03 ACTUAL
Operation and Maintenance Expenditures				
Elections	214	139	54%	620
Total Operation and Maintenance Vote 24	214	139	54%	620
Amortization Expense				
	0	0	0%	0
Operation and Maintenance Recoveries				
	0	0	0%	0
Revenue				
	0	0	0%	0
Allotments				
Personnel	89	87	2%	121
Other	125	52	140%	499
Transfer Payments	0	0	0%	0
Total Allotments	214	139	54%	620

Note:

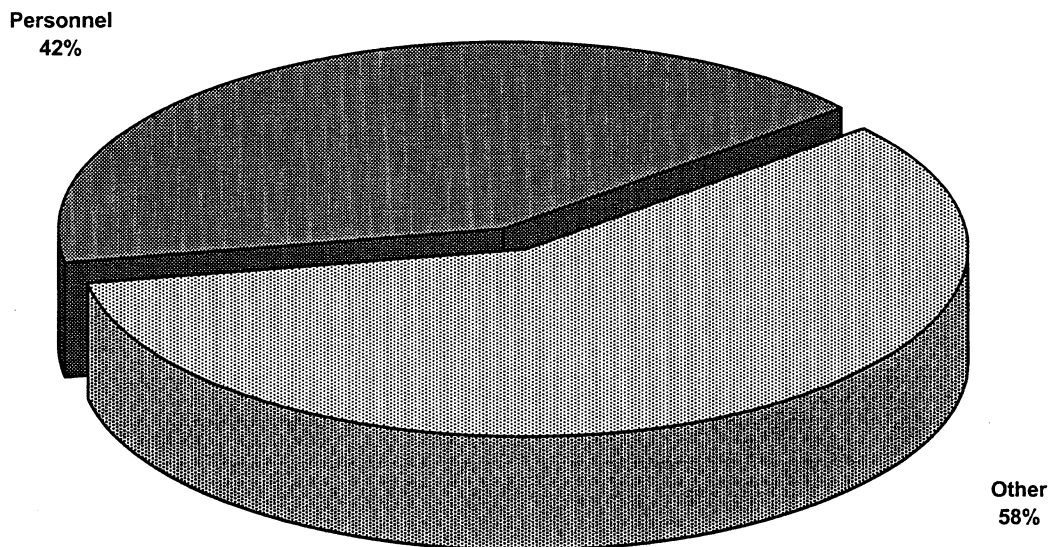
Restated 2003-04 Forecast and 2002-03 Actual to be consistent with the 2004-05 Estimate presentation.

**VOTE 24
ELECTIONS OFFICE**

**2004-05 Estimate
Distribution of O&M Expenditures by Activity**



**2004-05 Estimate
Distribution of O&M Expenditures by Allotment**



ELECTIONS OFFICE

ELECTIONS

PROGRAM DESCRIPTION

- Maintain the elections administrative structure in a state of readiness for the call of an election.
- Conduct by-elections and general elections of members to the Yukon Legislative Assembly.
- Report to the Yukon Legislative Assembly on election-related matters.
- Conduct elections of members of School Councils and trustees of School Boards pursuant to the Education Act.
- Provide consultative services and resources regarding election administration to other agencies.
- Provide secretariat services to electoral district boundaries commissions.

O&M EXPENDITURES (\$000'S)	2004-05 ESTIMATE	2003-04 FORECAST	% CHANGE	2002-03 ACTUAL
Activities				
Chief Electoral Office	149	125	19%	129
Elections: Education Act	65	14	364%	42
Elections Administration	one dollar	one dollar	0%	449
Total Elections	214	139	54%	620
Allotments				
Personnel	89	87	2%	121
Other	125	52	140%	499
Transfer Payments	0	0	0%	0
Total Allotments	214	139	54%	620