

ELECTIONS OFFICE

**VOTE 24
ELECTIONS OFFICE**

SPEAKER OF THE ASSEMBLY

Hon. T. Staffen

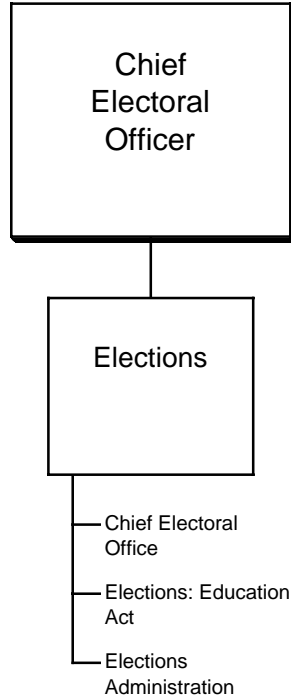
CHIEF ELECTORAL OFFICER

P. Michael

- To manage and conduct elections of Members of the Yukon Legislative Assembly and school-governing groups.
- To provide administrative support for electoral district boundaries commissions.

ELECTIONS OFFICE

RELATIONSHIP BETWEEN ORGANIZATION AND PROGRAMS



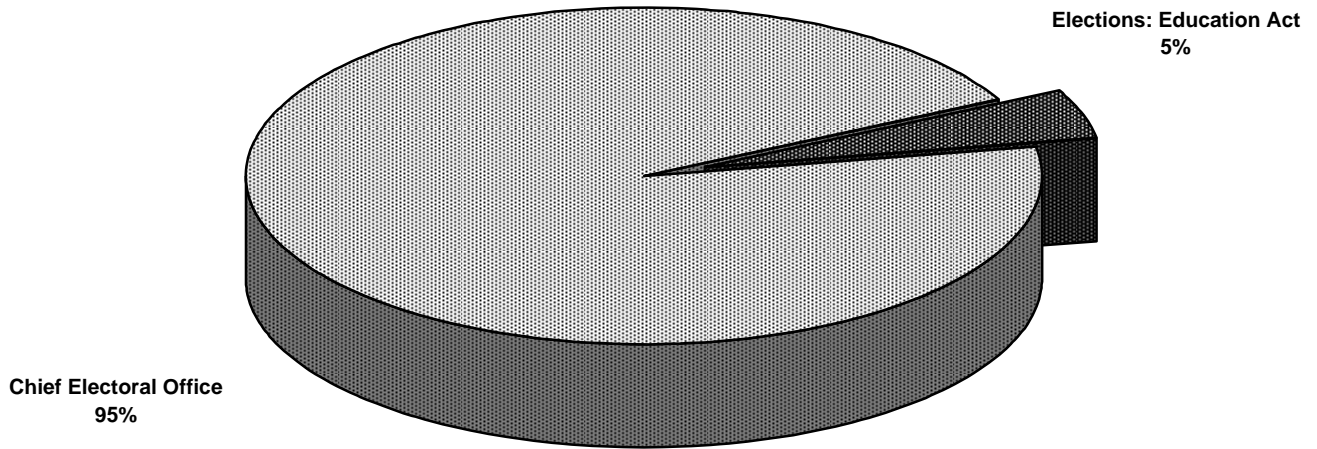
**VOTE 24
ELECTIONS OFFICE**

FINANCIAL SUMMARY (\$000'S)	2005-06 ESTIMATE	2004-05 FORECAST	% CHANGE	2003-04 ACTUAL
Operation and Maintenance Expenditures				
Elections	210	214	-2%	124
Total Operation and Maintenance Vote 24	210	214	-2%	124
Amortization Expense				
	0	0	0%	0
Operation and Maintenance Recoveries				
	6	0	100%	0
Revenue				
	0	0	0%	0
Allotments				
Personnel	92	89	3%	87
Other	118	125	-6%	37
Transfer Payments	0	0	0%	0
Total Allotments	210	214	-2%	124

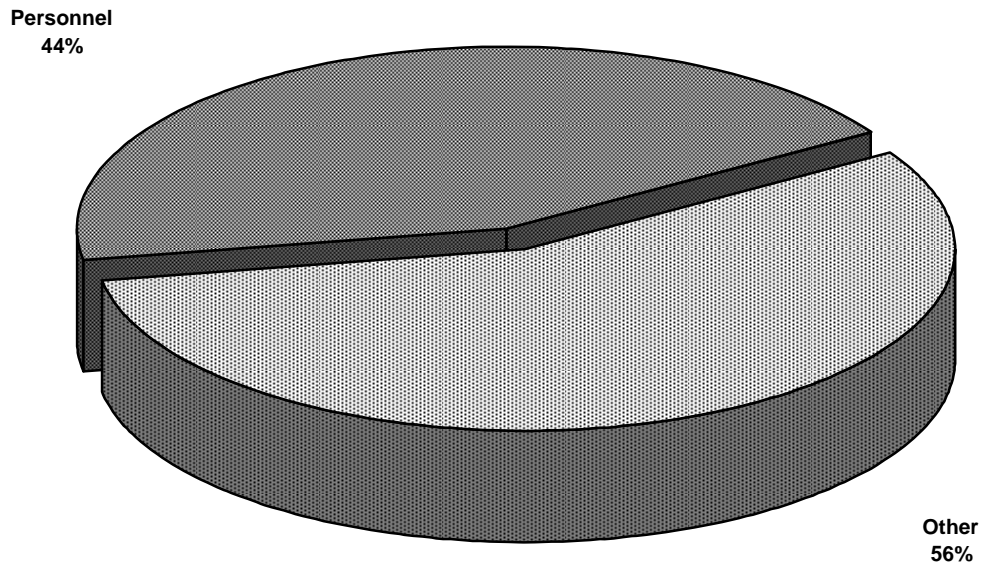
Note:
Restated 2003-04 Actual to be consistent with the 2005-06 Estimate presentation.

**VOTE 24
ELECTIONS OFFICE**

**2005-06 Estimate
Distribution of O&M Expenditures by Activity**



**2005-06 Estimate
Distribution of O&M Expenditures by Allotment**



ELECTIONS OFFICE

ELECTIONS

PROGRAM DESCRIPTION

- Maintain the elections administrative structure in a state of readiness for the call of an election.
- Conduct by-elections and general elections of Members to the Yukon Legislative Assembly.
- Report to the Yukon Legislative Assembly on election-related matters.
- Conduct elections of members of School Councils and trustees of School Boards pursuant to the Education Act.
- Provide consultative services and resources regarding election administration to other agencies.
- Provide secretariat services to electoral district boundaries commissions.

O&M EXPENDITURES (\$000'S)	2005-06 ESTIMATE	2004-05 FORECAST	% CHANGE	2003-04 ACTUAL
Activities				
Chief Electoral Office	200	149	34%	115
Elections: Education Act	10	65	-85%	9
Elections Administration	one dollar	one dollar	0%	0
Total Elections	210	214	-2%	124
Allotments				
Personnel	92	89	3%	87
Other	118	125	-6%	37
Transfer Payments	0	0	0%	0
Total Allotments	210	214	-2%	124

ELECTIONS OFFICE

RECOVERIES (\$000'S)	2005-06 ESTIMATE	2004-05 FORECAST	% CHANGE	2003-04 ACTUAL
Elections				
Conference Fees	6	0	100%	0
TOTAL RECOVERIES	6	0	100%	0

This page left blank intentionally.