

ELECTIONS OFFICE



**VOTE 24
ELECTIONS OFFICE**

SPEAKER OF THE ASSEMBLY

Hon. T. Staffen

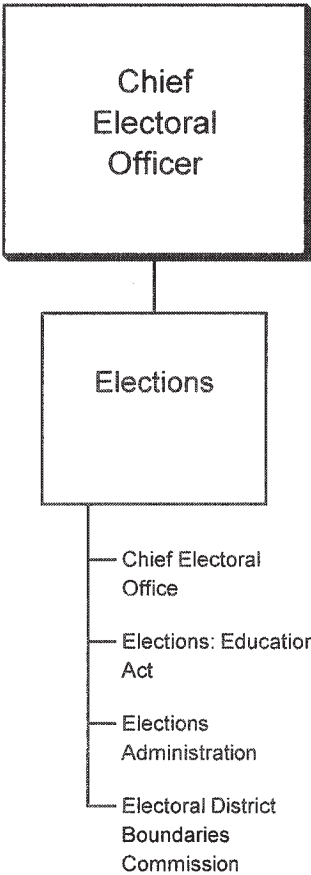
CHIEF ELECTORAL OFFICER

J. Waugh

- To manage and conduct elections of Members of the Yukon Legislative Assembly and school-governing groups.
- To provide administrative support for electoral district boundaries commission.

ELECTIONS OFFICE

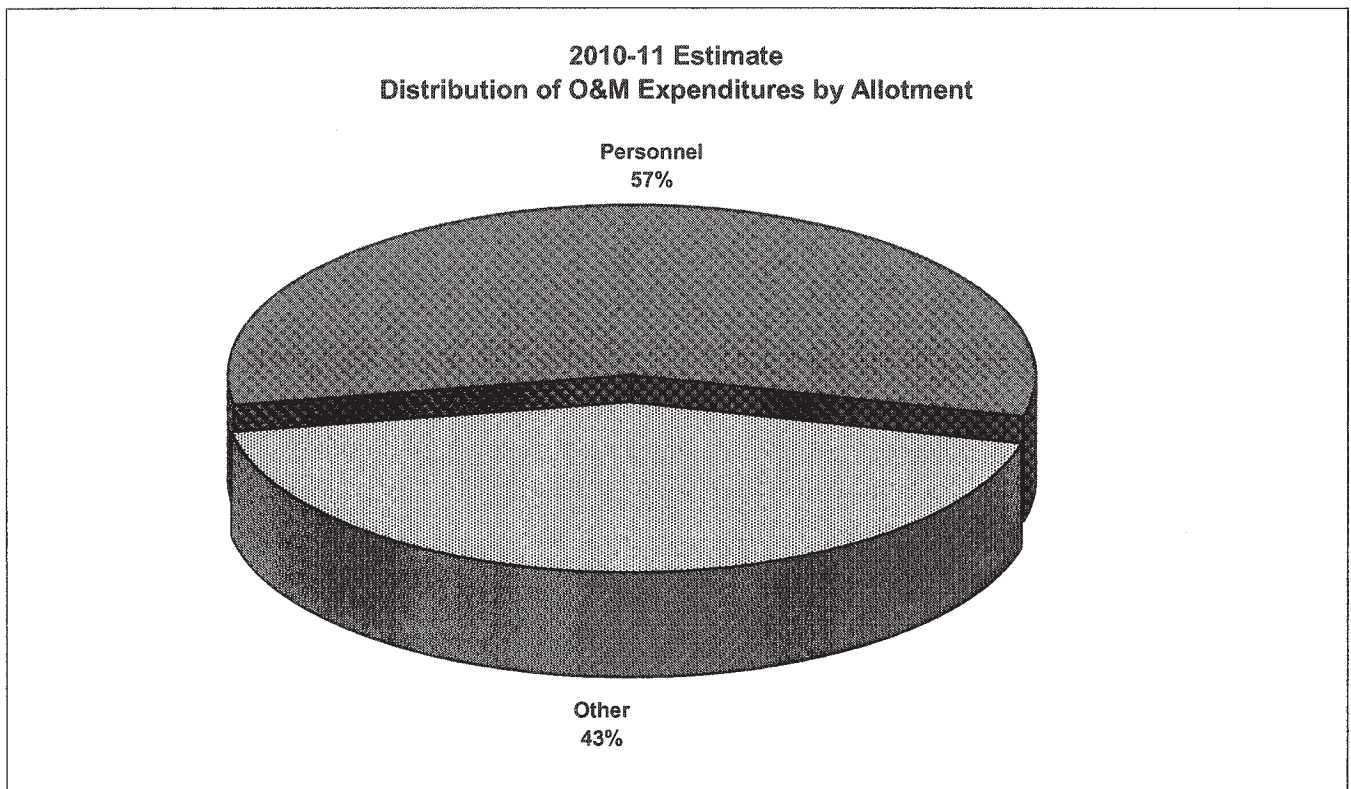
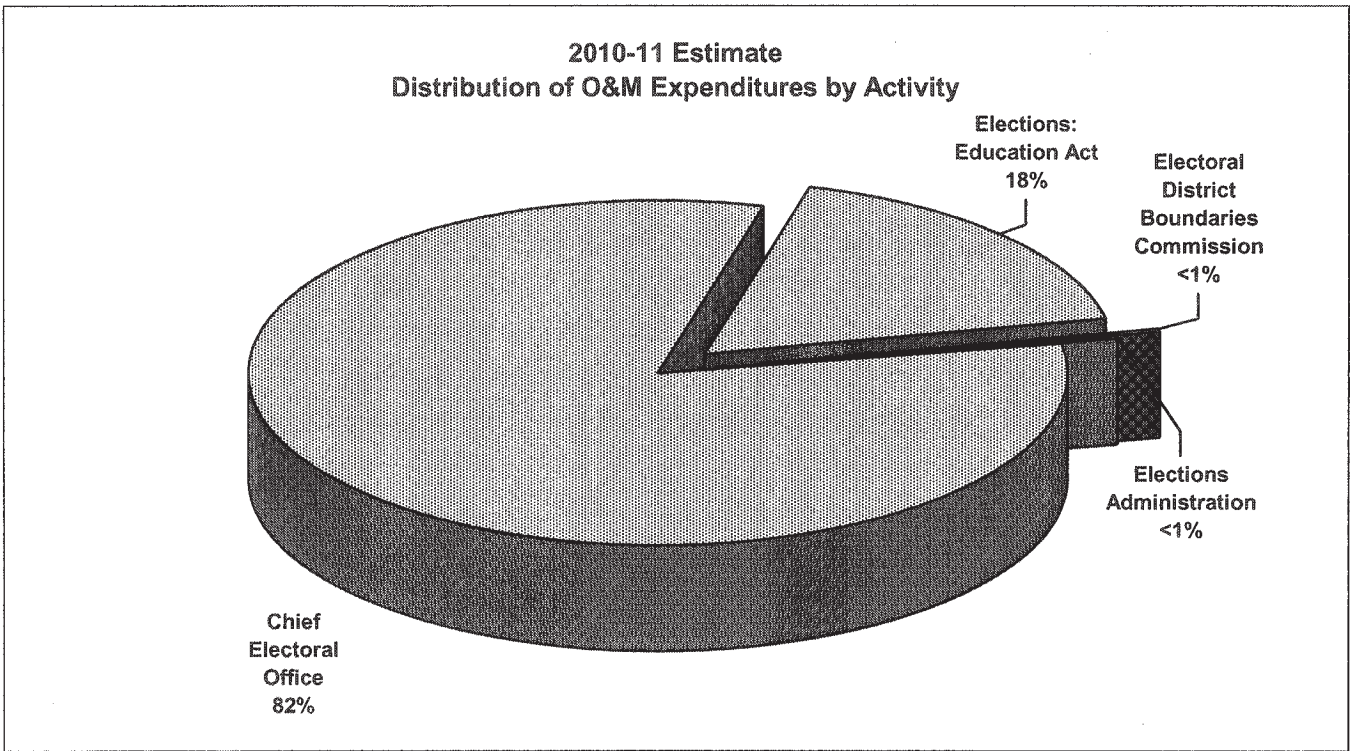
RELATIONSHIP BETWEEN ORGANIZATION AND PROGRAMS



**VOTE 24
ELECTIONS OFFICE**

FINANCIAL SUMMARY (\$000s)	2010-11 ESTIMATE	<i>Comparable</i>		
		2009-10 FORECAST	2009-10 ESTIMATE	2008-09 ACTUAL
Operation and Maintenance Expenditures				
Elections	427	357	357	314
Total Operation and Maintenance Vote 24	427	357	357	314
Amortization Expense	0	0	0	0
Revenues	0	0	0	0
Allotments				
Personnel	242	247	247	226
Other	185	110	110	88
Transfer Payments	0	0	0	0
Total Allotments	427	357	357	314

**VOTE 24
ELECTIONS OFFICE**



ELECTIONS OFFICE

ELECTIONS

PROGRAM DESCRIPTION

- Maintain the elections administrative structure in a state of readiness for the call of an election.
- Conduct by-elections and general elections of Members to the Yukon Legislative Assembly.
- Report to the Yukon Legislative Assembly on election-related matters.
- Conduct elections of members of School Councils and trustees of School Boards pursuant to the *Education Act*.
- Provide consultative services and resources regarding election administration to other agencies.
- Provide secretariat services to electoral district boundaries commission.

O&M EXPENDITURES (\$000s)	2010-11 ESTIMATE	Comparable		
		2009-10 FORECAST	2009-10 ESTIMATE	2008-09 ACTUAL
Activities				
Chief Electoral Office	351	350	350	257
Elections: Education Act	76	7	7	57
Elections Administration	one dollar	one dollar	one dollar	0
Electoral District Boundaries Commission	one dollar	one dollar	one dollar	0
Total Elections	427	357	357	314
Allotments				
Personnel	242	247	247	226
Other	185	110	110	88
Transfer Payments	0	0	0	0
Total Allotments	427	357	357	314