

WOMEN'S DIRECTORATE



**VOTE 11
WOMEN'S DIRECTORATE**

MINISTER

Hon. M. Horne

A/DIRECTOR

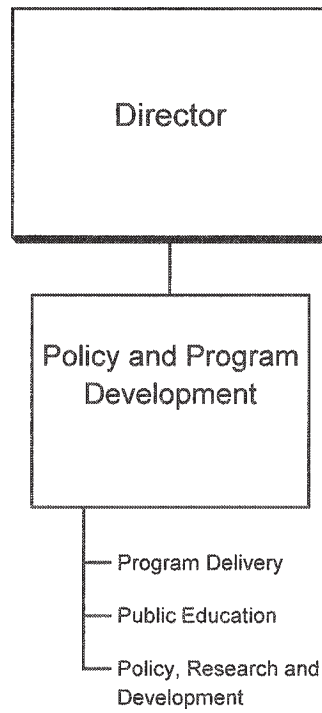
S. Curtin

DEPARTMENTAL OBJECTIVE

- To support the Government of Yukon's commitment to the economic, legal and social equality of women.

WOMEN'S DIRECTORATE

RELATIONSHIP BETWEEN ORGANIZATION AND PROGRAMS

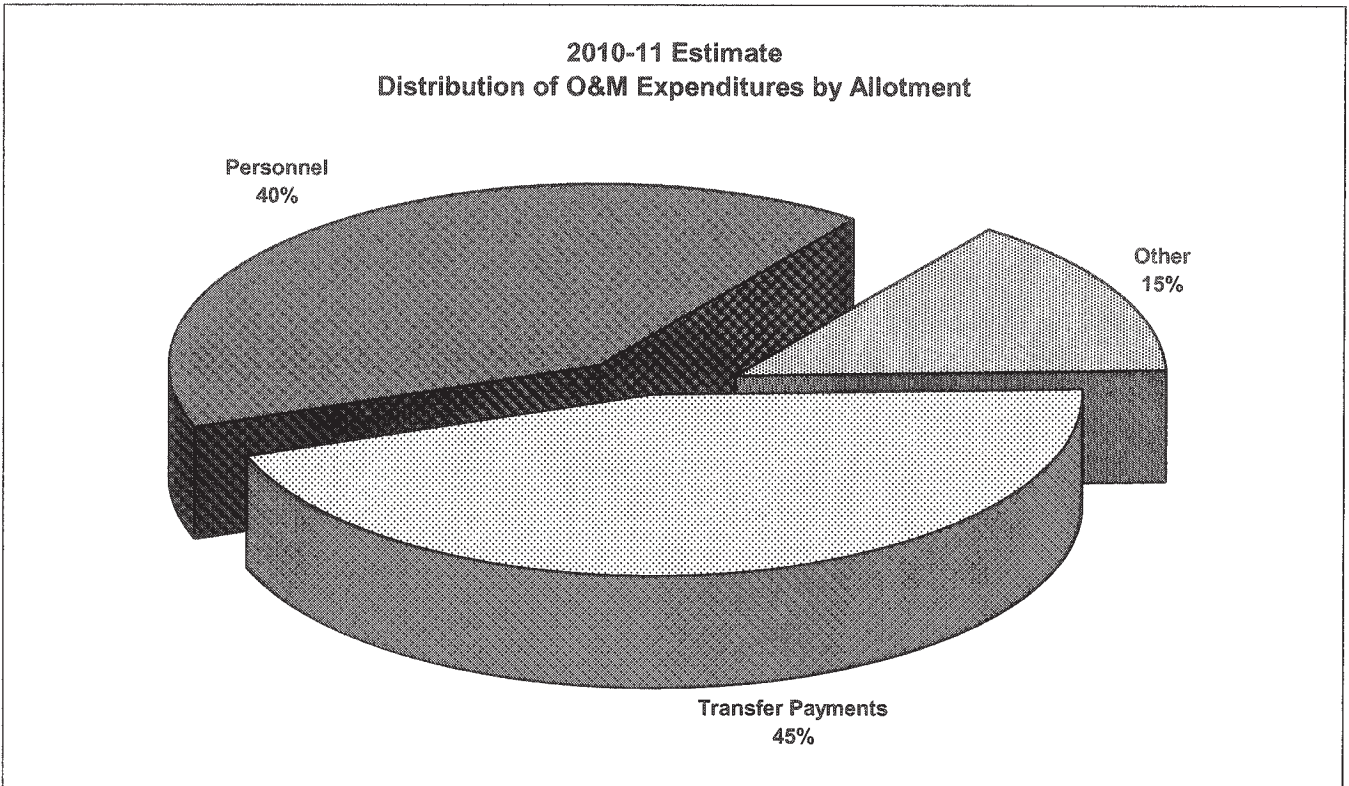
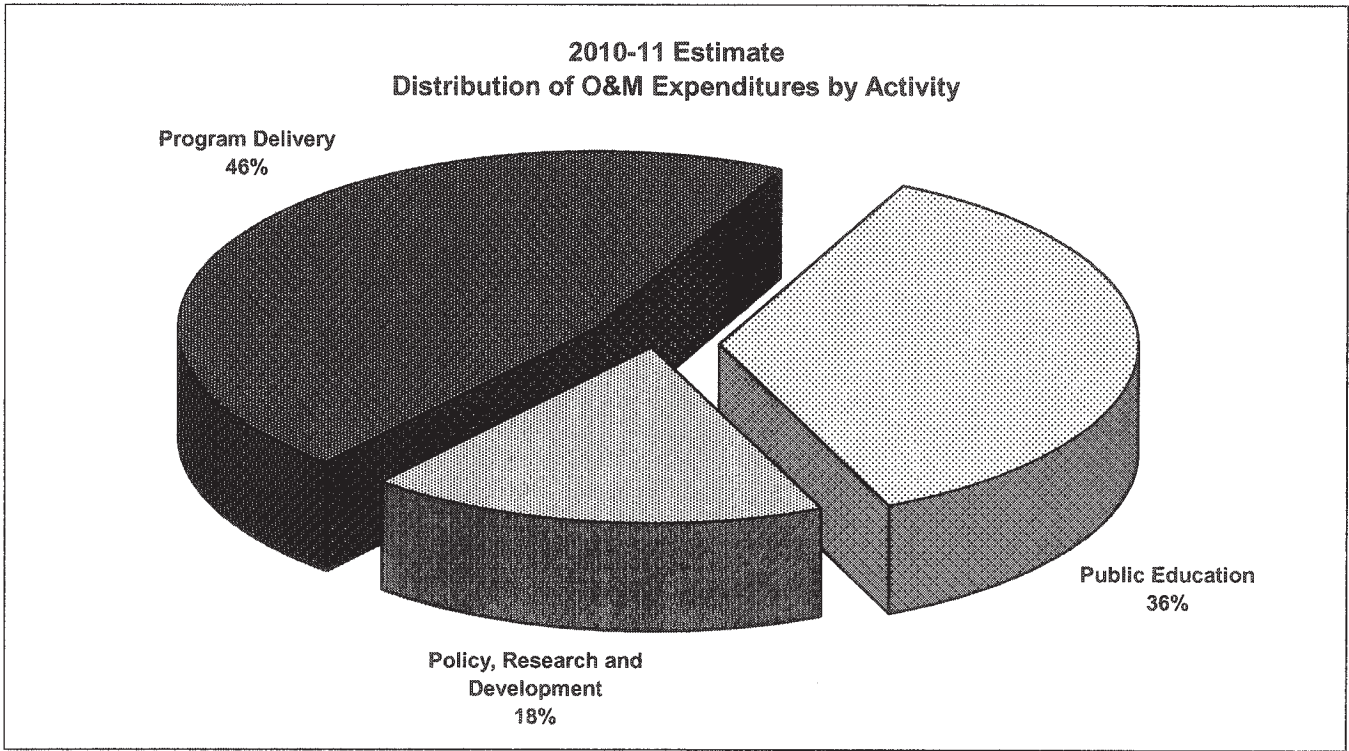


**VOTE 11
WOMEN'S DIRECTORATE**

FINANCIAL SUMMARY (\$000s)	2010-11 ESTIMATE	<i>Comparable</i>		
		2009-10 FORECAST	2009-10 ESTIMATE	2008-09 ACTUAL
Operation and Maintenance Expenditures				
Policy and Program Development	1,747	1,239	1,239	1,147
Total Operation and Maintenance Vote 11	1,747	1,239	1,239	1,147
Amortization Expense	0	0	0	0
Revenues	0	0	0	0
Allotments				
Personnel	707	571	571	562
Other	255	196	196	224
Transfer Payments	785	472	472	361
Total Allotments	1,747	1,239	1,239	1,147

Note:
Restated 2008-09 Actual to be consistent with the 2010-11 Estimate presentation.

**VOTE 11
WOMEN'S DIRECTORATE**



WOMEN'S DIRECTORATE

POLICY AND PROGRAM DEVELOPMENT

PROGRAM OBJECTIVES

- To provide leadership in policy research and development to ensure gender equitable outcomes in government legislation, policy, and programs.
- To promote women and girls' equality by raising awareness of women's issues through effective public education.
- To support community-based initiatives that enhance women and girls' equality.

O&M EXPENDITURES (\$000s)	2010-11 ESTIMATE	<i>Comparable</i>		
		2009-10 FORECAST	2009-10 ESTIMATE	2008-09 ACTUAL
Activities				
Program Delivery	804	662	662	649
Public Education	633	424	424	337
Policy, Research and Development	310	153	153	161
Total Policy and Program Development	1,747	1,239	1,239	1,147
Allotments				
Personnel	707	571	571	562
Other	255	196	196	224
Transfer Payments	785	472	472	361
Total Allotments	1,747	1,239	1,239	1,147

WOMEN'S DIRECTORATE

TRANSFER PAYMENTS (\$000s)	2010-11 ESTIMATE	<i>Comparable</i>		
		2009-10 FORECAST	2009-10 ESTIMATE	2008-09 ACTUAL
OTHER TRANSFER PAYMENTS				
Policy and Program Development				
Victoria Faulkner Women's Centre				
- Women's Advocate	60	60	60	60
Women's Equality Fund	300	207	207	202
Family Violence and Violence Against Women Prevention Initiatives	200	200	200	96
Women's Community Projects	10	5	5	3
Northern Strategy				
- Aboriginal Women's Programs	215	0	0	0
TOTAL TRANSFER PAYMENTS	785	472	472	361